



SWIMMING POOL HEAT PUMP

ITEM # 75218 14,500 BTU



OWNER'S MANUAL AND SAFETY INSTRUCTIONS

SAVE THIS MANUAL. KEEP THIS MANUAL FOR SAFETY WARNINGS, PRECAUTIONS, ASSEMBLY, OPERATION, INSPECTION, MAINTENANCE AND CLEANING PROCEDURES. WRITE THE PRODUCT'S SERIAL NUMBER ON THE BACK OF THE MANUAL, OR THE MONTH AND YEAR OF PURCHASE IF PRODUCT HAS NO SERIAL NUMBER

FOR QUESTIONS, PLEASE CALL CUSTOMER SERVICE: 909.628.0880

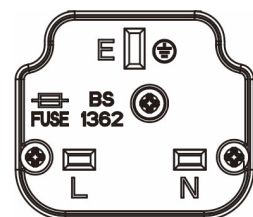
SAFETY WARNINGS

WARNING

Read all safety warnings and instructions. Failure to follow the warnings and instructions may result in injury and/or property damage. Save all warnings and instructions for future reference.

The warning and safety instructions in this manual are not meant to cover all possible conditions and situations that may occur. Common sense, caution and care must be exercised when operating or cleaning tools and equipment. Always contact your dealer, distributor, service agent or manufacturer about problems or conditions you do not understand before operating the product.

1. This Heat pump is exclusively for heating swimming pools. Any other use not in conformity and random will be considered as dangerous and unsuitable.
2. Always keep the unit upright. If the unit has been tilted or put on its side, wait 24h before starting the heat pump.
3. Put the unit on a flat, solid base.
4. Do not drop the heat pump.
5. The heat pump must always be installed outdoors, but the plug is for indoor use only.
6. Check if the voltage indicated on the RCD of the heat pump corresponds to the local mains voltage before you connect the unit.
7. Do not pull the mains plug with unnecessary force. Do not wrap the mains plug around the heat pump.
8. Do not use the heat pump in combination with a transformer, as this could cause hazardous situations.
9. If the heat pump is damaged during transportation, it must be replaced, please contact your service center or similarly qualified persons in order to avoid a hazard.
10. Always make sure the water connections of the heat pump are properly locked before you start using the machine.
11. Never insert objects directly into the fan when the heat pump is operating, as this will cause it to become blocked and damaged.
12. Suggested water flow speed is 1.5~4m³/h.
13. In a concern to a constant improvement, our products can be modified without notice; the present pictures in this note or the characteristics which are described are not contractual.
14. When connect plug to socket (power supply),



SAFETY WARNINGS

make sure that live wire, neutral wire, earth wire to plug should be connected as right drawing.

15. If the supply cord is damaged, it must be replaced by the manufacture, its service agent or similar qualified persons in order to avoid a hazard.
16. This appliance can be used by children aged from 8 years and above and persons with reduced physical, sensory or mental capabilities or lack of experience and knowledge if they have been given supervision or instruction concerning use of the appliance in a safe way and understand the hazards involved.
17. Children shall not play with the appliance.
18. Cleaning and user maintenance shall not be made by children without supervision.

Precautions

1. All electrical connections must be performed by a qualified electrician and according to national and local electrical codes. We have provided important safety messages in this manual and on your heat pump. Always read and obey all safety messages.
2. You will need to set the water temperature you desire.
3. Always install the machine outdoors, while adhering to the minimal clearances needed for proper operation and heating. DO NOT place the unit next to shrubs, fences, etc. which can block the air inlet. These locations deny the unit a continuous source of fresh air which reduces its efficiency and may prevent adequate heat delivery.
4. Heat Pumps must be installed in accordance with all applicable National and Local codes. In the absence of local codes, refer to the latest edition of the Canadian Electrical Code (CEC).
5. The unit will automatically start up when there is proper flow and available power.

SAFETY WARNINGS

6. If the unit is stopped for an extended period of time or winterized, it must be drained of all water. You will need to disconnect the IN and OUT water connections. Then the unit must then be tilted or blown out with air until all water is out.
7. Do not insert any objects into the air outlet. Do not attempt to disassemble the fan at any time.
8. If at any time there is any abnormal noise, odor, smoke, electricity leakage, please switch off power immediately and contact your local dealer. All repairs must be performed by a qualified technician.
9. Do not store combustible or flammable material near unit.

TECHNICAL SPECIFICATIONS

Unit Model	Unit	75218
A80°F /W80°F /80%RH	BTU/hr	14500
COP		5.9
A80°F /W80°F /63%RH	BTU/hr	13500
COP		5.5
A50°F /W80°F /63%RH	BTU/hr	9500
COP		4.5
Voltage Required	V/P/Hz	115/1/60
Operating Current	Amps	8
Recommended circuit breaker	Amps	15
Maximum circuit breaker	Amps	20
Ideal for pools up to (with pool cover)	Gallons	4700
Water Flow Volume	GPM	17
Compressor Style	Rotary-R410A	
Heating Exchanger	Titanium in PVC	
Water Connection		1.25"&1.5"
Noise (33ft)	dB(A)	37
Noise (3ft)	dB(A)	47
Net Unit Size (L/W/H)	W"xD"xH"	14x12x14
Carton Size (L/W/H)	W"xD"xH"	16x16x16.5
Net/Gross Weight	lbs	40/44

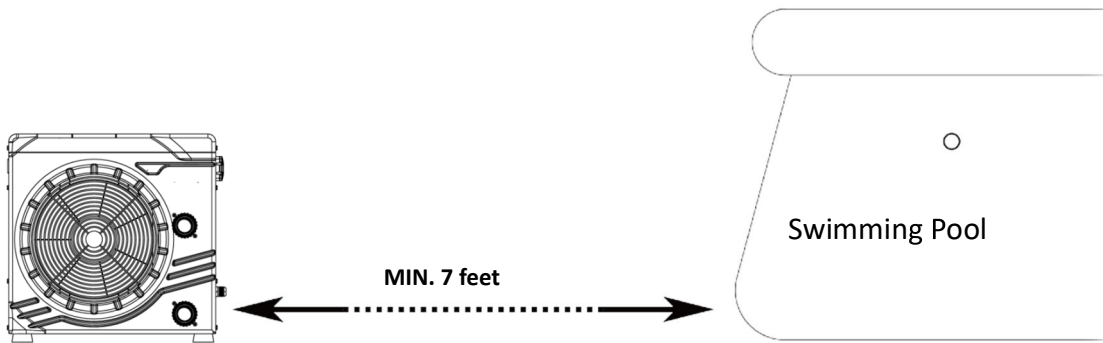
*** possible variations of value according to climatic conditions**

INSTALLATION

4. Preparation

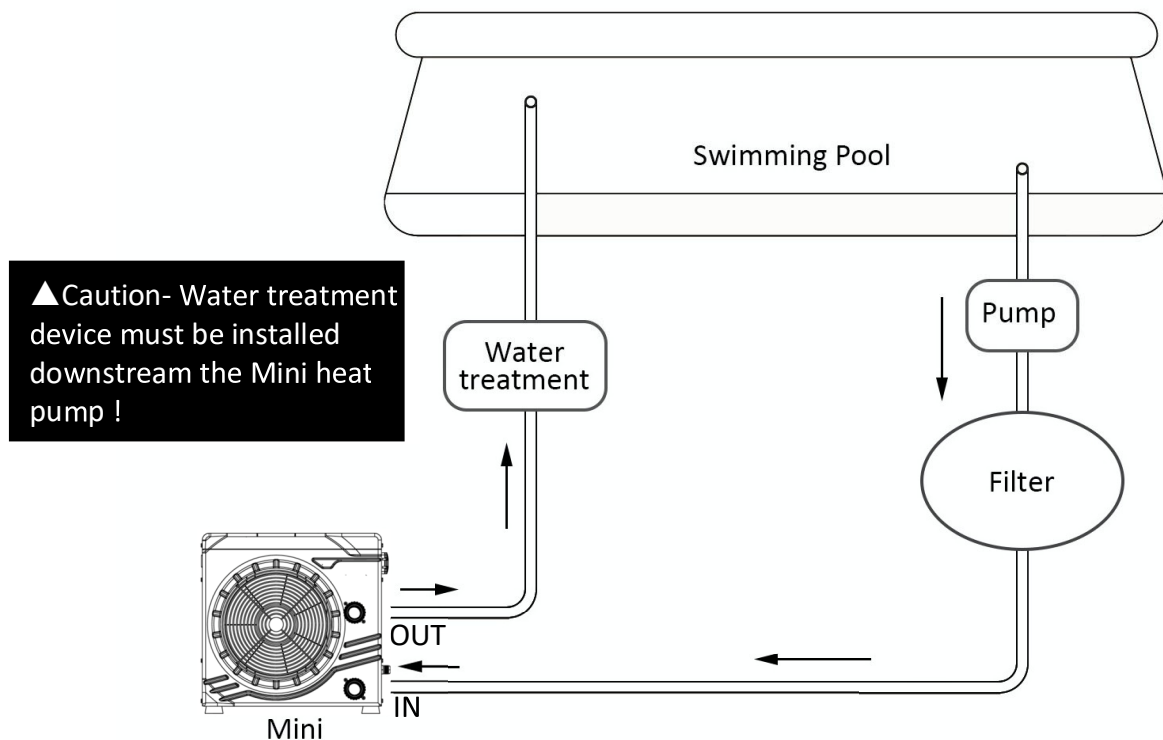
Distance from the pool

The heat pump should be located at least 7 feet away from the swimming pool.



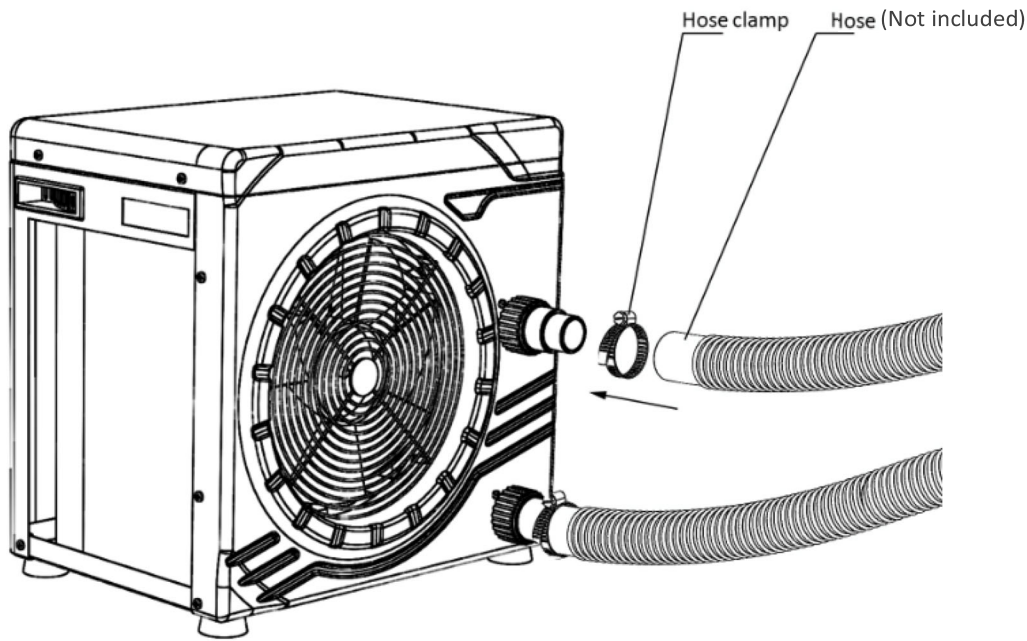
- ▶ A free area of minimum 1 foot around the heat pump has to be kept clear from any object.
- ▶ Put the heat pump on a flat, solid base.
- ▶ Do not obstruct the fan, leave at least 5 feet free unobstructed space in front of the fan.

Typical configuration



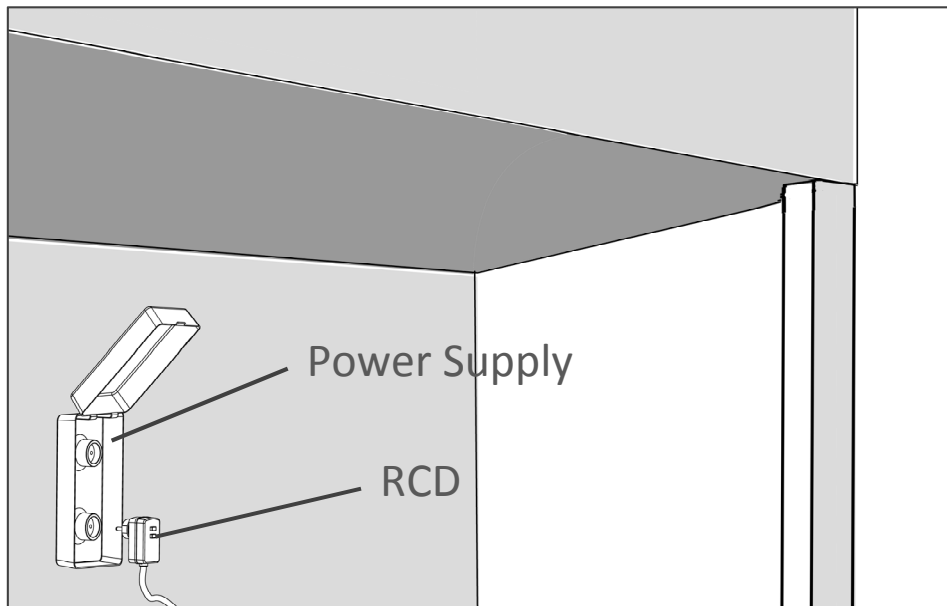
INSTALLATION

Hose connection



▲ Caution-It is normal for condensation water to come out of the heat pump when it is operating. This is not a fault or leak!

Electrical connection

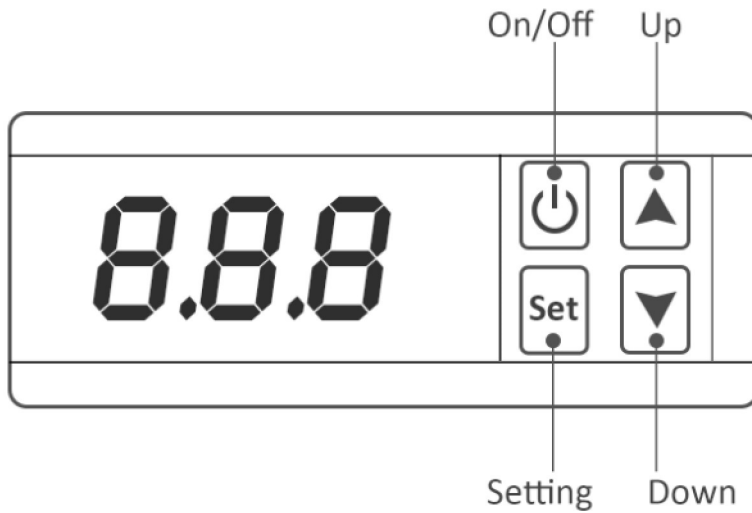


▲ Caution- The RCD should be plugged indoor.

▲ Caution- It is a MUST to have the licensed electrician doing all electrical hard wiring while RCD plug needs to be removed.

5. Start up and settings

Display overview



Operation Instruction

1. Button and operation

- On/Off button:
 - ◆ On/Off;
 - ◆ Exit the setting mode;
- "Set" button:
 - ◆ Press "Set" button for 5s to check the setting, press "▲" or "▼" to page up or page down;
 - ◆ Press "Set" button again to set the parameter (the parameter starts to flash), press "▲" or "▼" button to adjust the parameter, then press the "Set" button again to confirm the setting;
- "▲" & "▼" button:
 - ◆ Upwards & Downwards;
 - ◆ Press "▲" & "▼" button to adjust the desired temperature setting.
 - ◆ Set the parameter at setting mode;

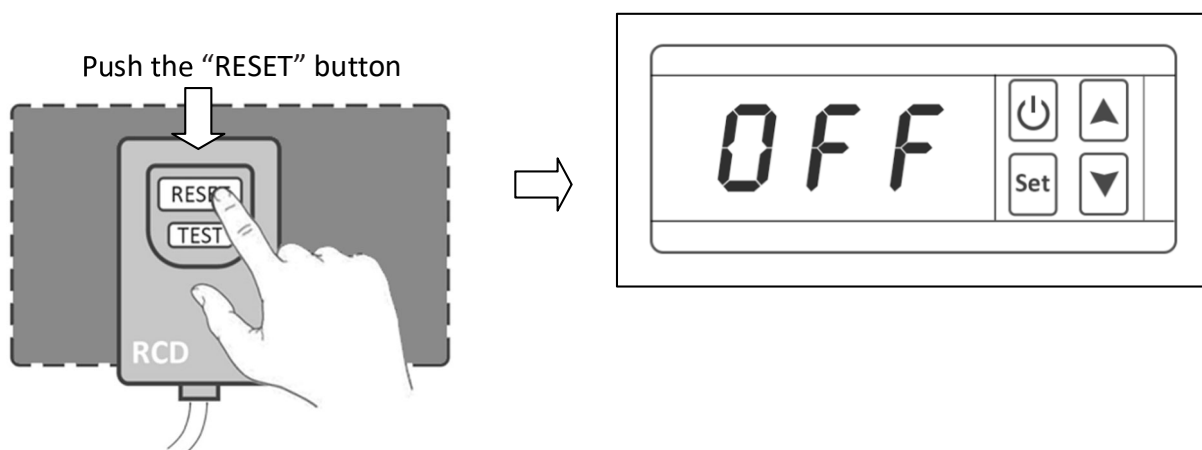
Starting

STEP 1 (Start)

Turn on your pool circulation pump (not included). Check for possible water leaks and for good water flow to and from the swimming pool.

STEP 2 (Start)

Push the reset button on the RCD of the heat pump. The Red light will turn on, indicating the heat pump is ready to start.



STEP 3 (Start)

Push the On/Off button to start the heat pump. The current water temperature will appear and the heat pump will start automatically.

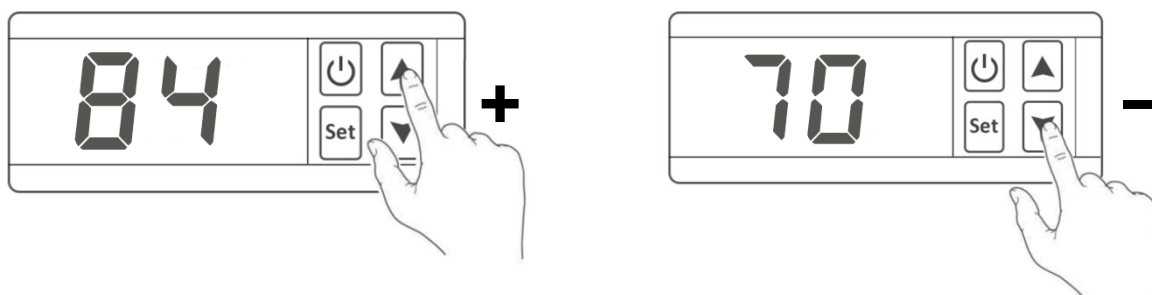


1. Power on- The fan will work first, then the compressor will start to work after 15s. Power off- The fan will stop after 30s that the compressor stopped.
2. The heat pump won't start when the desired water temperature is reached (define set point in step 5). Meanwhile the current water temperature is shown on the display. The heat pump will start automatically when the water temperature drops a presetting °F (default is 37°F, available to be set to 34~50°F, refer the 'Operation parameter' on page 12) below set point.
 1. The compressor will NOT stop within 2 minutes after it starts to work.
 2. The compressor will stop in 3 minutes after it stops working.

OPERATION

STEP4 (Temperature Setting)

Push the “▲” & “▼” to set the desired temperature.



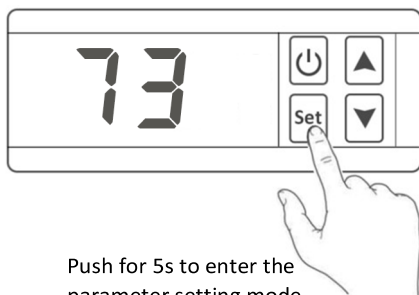
Allow the heat pump and filter/water pump to initially run 24 hours a day until the desired water temperature is reached.



- ▶ Several days will be needed to bring the temperature of the swimming pool water to its desired water temperature, depending the initial water temperature, ambient temperature and pool volume.
- ▶ A good pool cover and insulation of the piping to and from the swimming pool can reduce the warming up time considerably.

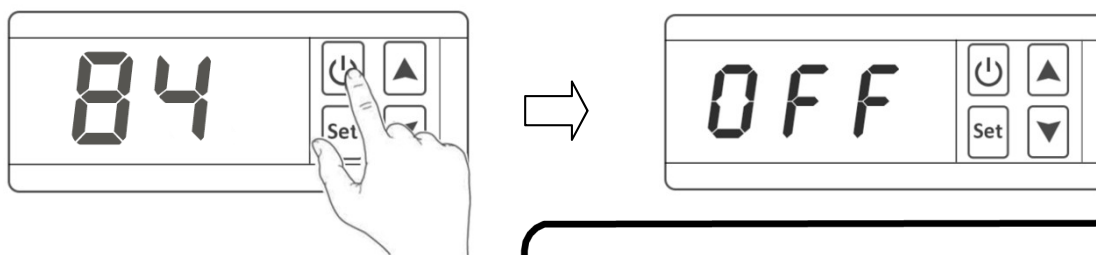
STEP 5 (Parameter Setting)

Press “Set” button for 5s to check the setting, press “▲” or “▼” to choose the parameter. Press “Set” button again to set the parameter (the parameter starts to flash), press “▲” or “▼” button to adjust the parameter, then press the “Set” button again to confirm the setting.



STEP 6 (Stop)

Push the On/Off button to stop the heat pump.



- ▶ The heat pump shuts down but the fan keeps on turning for 30 seconds to cool down.

Guidelines

Cold weather conditions

Your heat pump is designed to operate in rainy weather conditions and withstand frost using a specially created anti frost technology. However it is not recommended to leave it outside for long periods of time (eg over winter). After draining down the pool for the winter, store the heat pump in a dry place.

Restarting the heat pump after long term storage

If your heat pump has been stored for a long time, perform the following steps when re-starting the system:

1. Inspect the system for any debris or damage to the case.
2. Clean the evaporator fins if necessary. Make sure the evaporator fins are clean. Blocking the air intake will cause insufficient operation and will result in lower production of heat.
3. Check the fan for blockages.
4. Connect the water inlet and outlet.
5. Turn on the pool water circulation pump to start the water flow to the heat pump.
6. Restore electrical power to the heat pump and press the RESET button on the RCD.

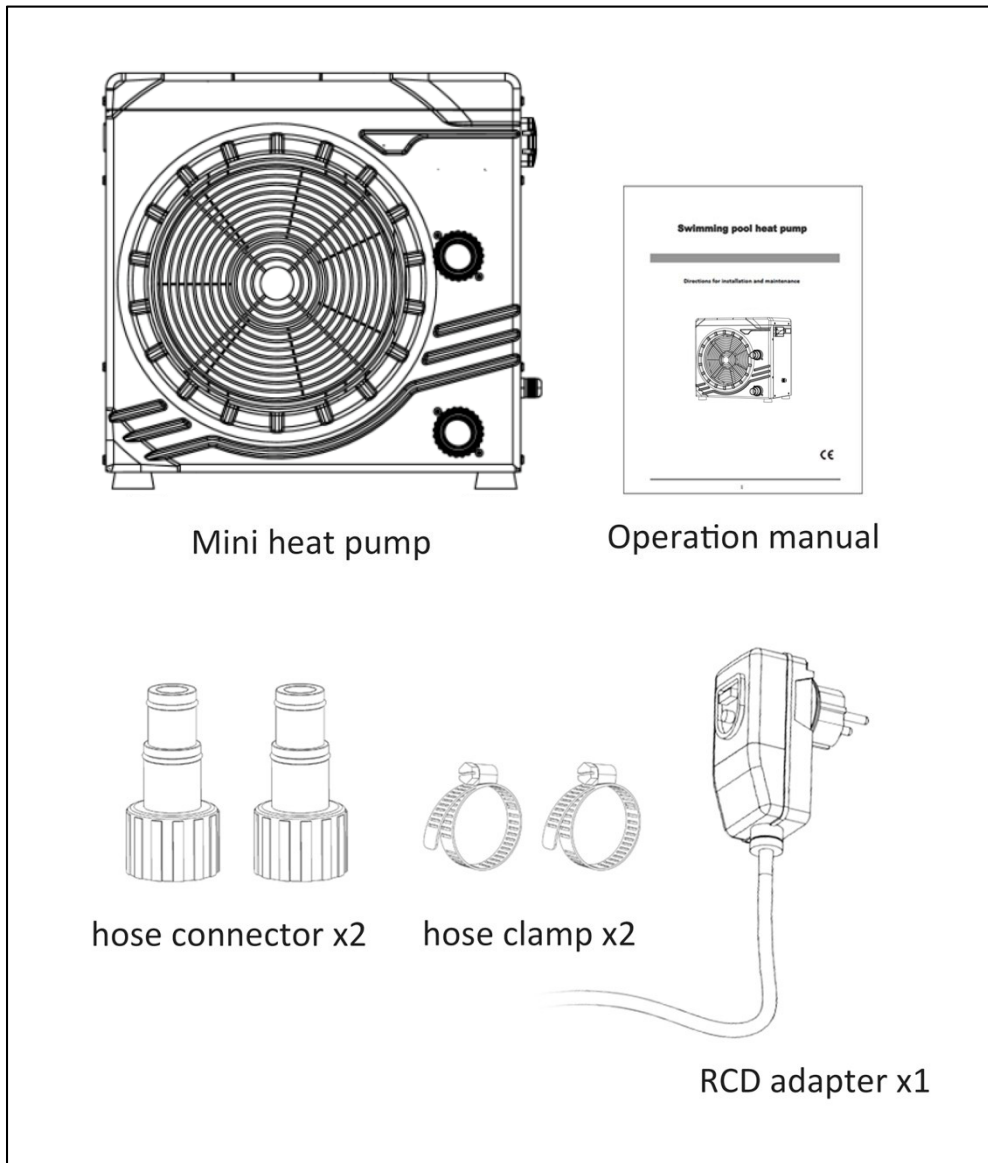
Maintenance and error messages

Maintenance

1. Check the water supply to and from the unit often. Low water flow or air entering into the pipes should be avoided, as this will diminish the heat pump performance and reliability. You should clean the swimming pool water regularly to avoid damage to the heat pump as a result of dirty pool water.
2. The area around the heat pump should be clear and well ventilated. Clean the evaporator and evaporator guard regularly to maintain good air flow and efficiency.
3. Check the power supply and cable connection often. In case of abnormal operation or a smell of burning near the electrical compartment, switch off the heat pump and contact your dealer.

OPERATION

Package includes:



TROUBLESHOOTING

Error Message	Component	Possibility	Solution
P1	Water temperature sensor	Sensor disconnected, non supplied or defective	Check the connections, the wires, change it or replace the electronic card
P2	compressor exhaust temperature sensor	Sensor disconnected, non supplied or defective	Check the connections, the wires, change it or replace the electronic card
P3	Copper sensor	Sensor disconnected, non supplied or defective	Check the connections, the wires, change it or replace the electronic card
P4	Auto power off	No flow rate or flow rate is too low.	Check the pump and filtration system to make the flow rate right
P5	Low pressure protection	Not enough refrigerant gas	Have the heat pump checked by a refrigeration technician
		Refrigerant Leaks	Have the heat pump checked by a refrigeration technician

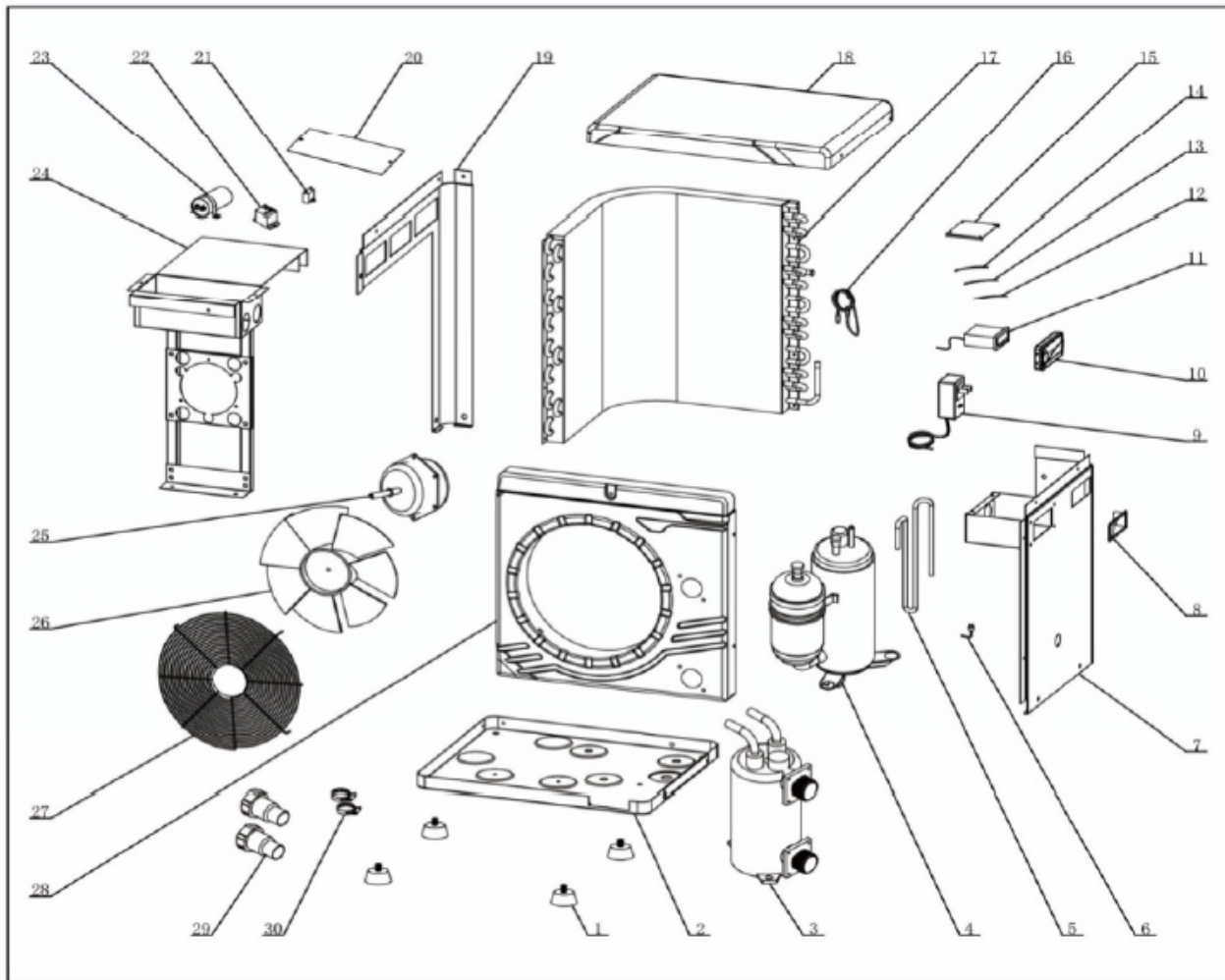


At error P4, the compressor will restart automatically after 3 min when the exhaust temperature lower than the protection pre-setting (parameter 3) for 59°F. If P4 happens 3 times in 30 min, it requires to restart manually by cutting off the power.

Operation parameter

No.	Meaning	Range	Default	Changeable
A	Water input temperature (actual)	-2~210°F	-	N/A
B	Exhaust temperature (actual)	-2~210°F	-	N/A
C	Copper temperature (actual)	-2~210°F	-	N/A
1	Heating setting water temperature	59°F~95°F	81°F	YES
2	Water temperature difference to restart	34°F~50°F	36°F	YES
3	Exhaust temperature protection	86°F~176°F	117°F	YES
4	Automatic restart	0/1	1	YES
5	Automatic defrost cycle time	10-90min	40min	YES
6	Automatic defrost setting temperature	-22°F~32°F	32°F	YES
7	Temperature of exit auto-defrost mode	34°F~86°F	36°F	YES
8	Time of exit auto-defrost mode	10-40min	30min	YES

PARTS INFORMATION



1	Rubber foot	11	Controller	21	Motor capacitor
2	Frame	12	Compressor sensor	22	Relay
3	Titanium heat exchanger	13	Water sensor	23	Compressor capacitor
4	Compressor	14	Copper sensor	24	Motor bracket
5	Copper pipe	15	Electrical box cover 1	25	Fan motor
6	Low pressure interruptor	16	Capillary	26	Fan
7	Right size board	17	Condenser	27	Fan protection net
8	Handle	18	Top cover	28	Front panel
9	Power cord	19	Left size board	29	Connector
10	Cotrol panel cover	20	Electrical box cover 2	30	Throat hoop

DISCLAIMER

PLEASE READ THE FOLLOWING CAREFULLY

THE MANUFACTURER AND/OR DISTRIBUTOR HAS PROVIDED THE PARTS LIST AND ASSEMBLY DIAGRAM IN THIS MANUAL AS A REFERENCE TOOL ONLY. NEITHER THE MANUFACTURER OR DISTRIBUTOR MAKES ANY REPRESENTATION OR WARRANTY OF ANY KIND TO THE BUYER THAT HE OR SHE IS QUALIFIED TO MAKE ANY REPAIRS TO THE PRODUCT, OR THAT HE OR SHE IS QUALIFIED TO REPLACE ANY PARTS OF THE PRODUCT. IN FACT, THE MANUFACTURER AND/OR DISTRIBUTOR EXPRESSLY STATES THAT ALL REPAIRS AND PARTS REPLACEMENTS SHOULD BE UNDERTAKEN BY CERTIFIED AND LICENSED TECHNICIANS, AND NOT BY THE BUYER. THE BUYER ASSUMES ALL RISK AND LIABILITY ARISING OUT OF HIS OR HER REPAIRS TO THE ORIGINAL PRODUCT OR REPLACEMENT PARTS THERETO, OR ARISING OUT OF HIS OR HER INSTALLATION OF REPLACEMENT PARTS THERETO.

Record Product's Serial Number Here: _____

Note: If product has no serial number, record month and year of purchase instead.

Note: Some parts are listed and shown for illustration purposes only and are not available individually as replacement parts.

The material in this manual is for informational purposes only. The product(s) it describes are subject to change without prior notice, due to the manufacturer's continuous development program. XtremePowerUS makes no representations or warranties with respect to this manual or with respect to the products described herein. XtremePowerUS shall not be liable for any damages, losses, costs or expenses, direct, indirect or incidental, consequential or special, arising out of, or related to the use of this material or the products described herein.

Questions, issues or missing parts?

Before returning to your retailer, our customer service team is here to help.



Call Us: 909.628.0880

Email Us: customer@xtremepowerusa.com

Hours of Operation: 9am - 3pm PST Monday - Friday

MADE IN CHINA