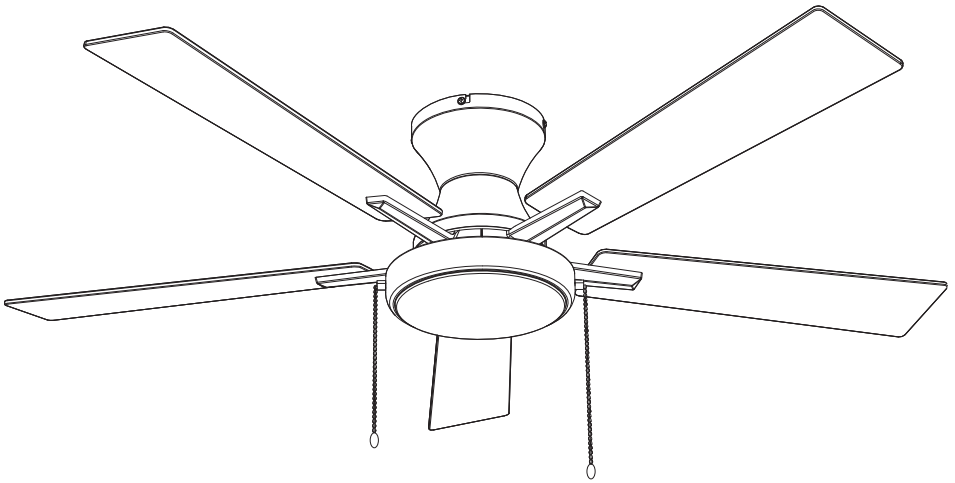


User's Manual



Warm Tips

1. About Light Memory: (Figure 1)

* Turn off the light for more than 10 seconds.

(wall switch or remote controller)

*Wait 10s to turn on the light, it will remain last light setting.

2. Using a full range dimmer switch to control fan speed will damage the fan.

3. The lighting kit is replaceable.

4. Pull Chain Switch :

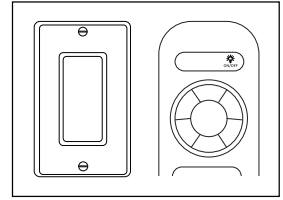


Figure 1

Operation	Fan Speed	Light Mode
1st Pull	Speed 1	Cool White
2nd Pull	Speed 3	Warm White
3rd Pull	Speed 6	Mixed Light
4th Pull	Off	Off

WARNING!!!

To avoid fire, shock and serious personal injury, follow these instructions.

1. Read the user manual and review assembly diagrams before installation.
2. Before installation, servicing, or cleaning, turn off power at the circuit breaker and lock it (or tag it) to prevent accidental restoration.
3. Keep away from moving blades. Always turn off power before any maintenance.
4. Never insert objects into the fan while it is operating.
5. Not for unsupervised use by children or persons with reduced physical, sensory, or mental capabilities.
6. If unfamiliar with electrical work, installation must be performed by a licensed electrician.

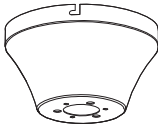
Fan components



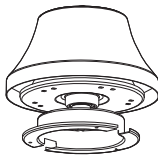
● — Mounting bracket (1)



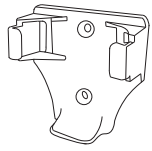
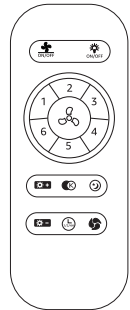
● — Receiver (1)



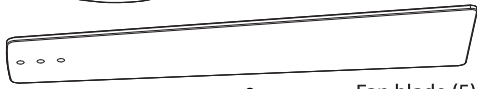
● — Canopy cover (1)



● — Fan motor host (1)



● — Remote controller (1)



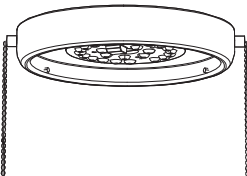
● — Fan blade (5)



● — Blade arm (5)



● — Safety rope (1)



● — Lamp body (1)



● — Lampshade (1)



● — Pull chain extension (2)

NOTE:
Refer to page 10 for lampshade removal.

(A) 3+1



Balance kit

(B) 4



Self-tapping screw

(C) 3



Wire nut

(D) 2+2



J-box screw

(E) 4



Washer

(F) 4+2



Elastic medium

(G) 16



Blade screw

(H) 16



Red washer

(I) 1



Motor screw

(J) 2



Expansion screw

(K) 1



Ceiling plate screw

(L) 1



Canopy screw

Energy Saving Usage

Ceiling fan performance and energy savings rely heavily on the proper installation and use of the ceiling fan. Here are a few tips to ensure efficient product performance.

Turn Off When Not In The Room

If the room is unoccupied, turn off the ceiling fan to conserve energy.

Using The Ceiling Fan Year Round

Summer Season: Use the ceiling fan in the counterclockwise direction. The airflow created by the ceiling fan produces a wind-chill effect, making you feel cooler. Select a fan speed that provides a comfortable breeze; lower speeds consume less energy.

Winter Season: Reverse the motor and operate the ceiling fan at a low speed in the clockwise direction. This produces a gentle updraft, which pushes the warm air near the ceiling down into the occupied space. Remember to adjust your thermostat when using your ceiling fan. This simple step can lead to additional energy and cost savings.

Operate Your Ceiling Fan

IMPORTANT: Using a full-range dimmer switch to control the fan speed will damage the fan. To reduce the risk of fire or electrical shock, do not use a full-range dimmer switch to control the fan speed (Figure 1).

Only control the light's on/off function via the wall fan switch.

Restore electrical power to the outlet box by turning the electricity back on at the main fuse box.



Figure 1

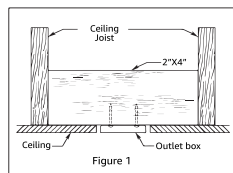
Electrical And Structural Requirements

Your new ceiling fan will require a grounded electrical supply line of AC 110-130V/60Hz and a 15 Amp circuit. According to electrical codes, it is necessary to use a fan-rated outlet box to support the additional weight and motion associated with a ceiling fan. A fan-rated box will be clearly labeled as such and is typically designed to support ceiling fans weighing up to 70 pounds.

Fan-rated outlet boxes are available in various ratings and designs. It is essential to ensure that the rating of your ceiling fan outlet box meets the requirements for the specific ceiling fan you are installing. Please refer to the figures below for different structural configurations that can be used for mounting the outlet box.

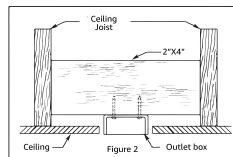
Low-profile use (Figure 1)

A 1/2-inch deep pancake box is meant to be screwed to a joist or block. It is used if only one cable is coming into the box. It is also available in a saddle-mount configuration.



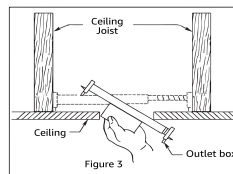
Deep-profile use (Figure 2)

A 2-1/4" deep box can be attached to blocking between joists and is roomy enough to handle more than one cable.



Brace Use (Figure 3)

Paired with a deep box, this hanger is meant to span between two joists and takes the place of wooden blocking.



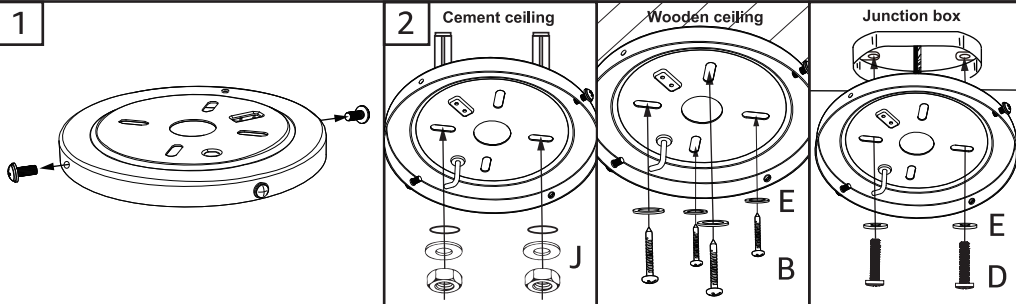
If your fan is to replace an existing light fixture, turn power off at the main fuse box and remove the existing light fixture.

WARNING

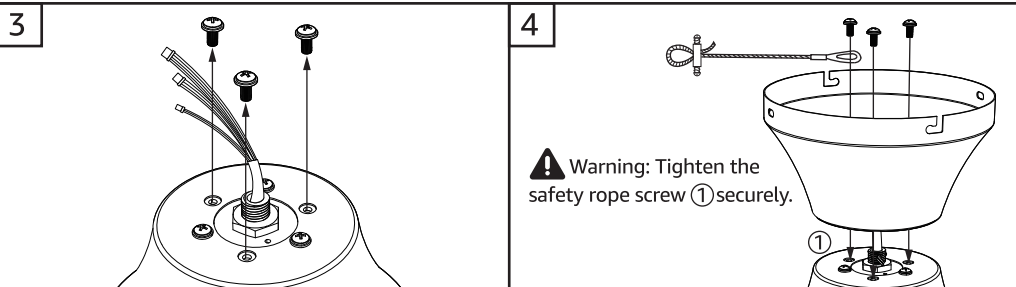
To ensure safety and prevent potential electrical shock, it is not sufficient to simply turn off the wall switch. Prior to wiring, make sure to turn off the electricity at the main fuse box. All wiring should be done in accordance with national and local electrical codes. Additionally, it is important to properly ground the ceiling fan as a precautionary measure against possible electrical shock. Following these guidelines will help ensure the safe installation and operation of your ceiling fan.

Do not use a variable (rheostat) wall controller or dimmer switch to operate this fan. Doing so can cause damage to the ceiling fan's remote control unit. It is recommended to only use the provided remote control.

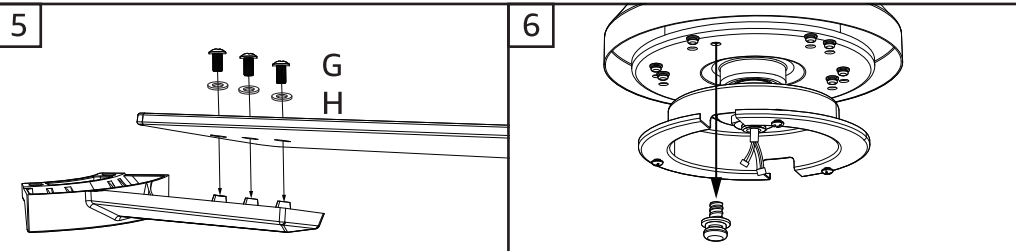
Installation



- Take out the 2 round hole screws from mounting bracket.
- Mount the bracket to the ceiling and use appropriate accessory screws to secure it based on the type of ceiling material.
 - Cement ceiling:** Drill holes on the cement ceiling, then use expansion screws for fixing.
 - Wood ceiling:** Use self-tapping screws to drive into the wooden ceiling.
 - Junction box:** Use j-box screw and washer to fix the bracket to the ceiling. (Please choose the corresponding hole size of 3 inches or 4 inches based on the dimensions of the ceiling junction box for installation.)



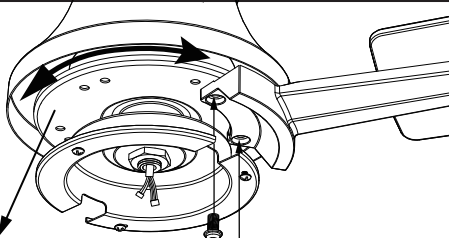
- Remove the 3 pre-installed screws on the fan motor host.
- Install the canopy onto the fan motor assembly, aligning it with the mounting holes. Fasten the safety rope to one of the screws removed in the previous step, then tighten all 3 screws securely.



- Attach the blade arms to the fan blades using 3 blade screws and 3 red washers . (Repeat this step for the remaining fan blades installation)
- Remove the 10 pre-installed motor screws from the fan motor host.

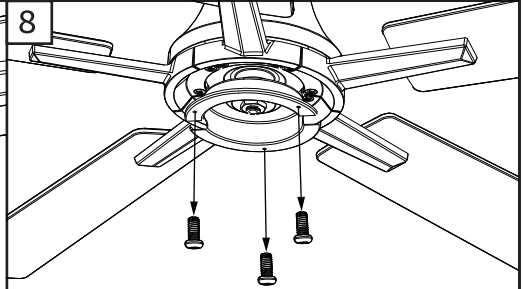
Installation

7



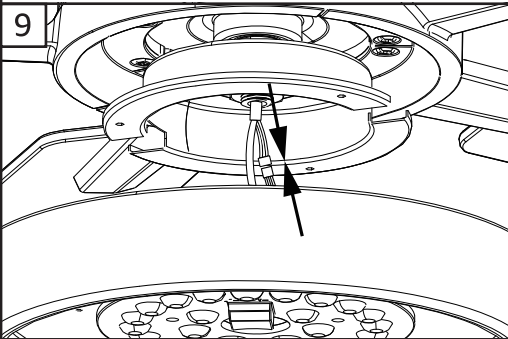
Rotate the motor base for target mounting hole alignment.

8

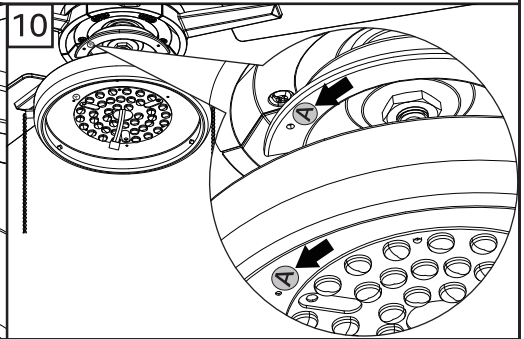


- Rotate the motor assembly, then secure the blade arms from step 5 to the fan motor unit using the screws removed in step 6. (Repeating for all remaining blades)
- Remove the 3 screws from the circular plate on the fan motor host chassis.

9

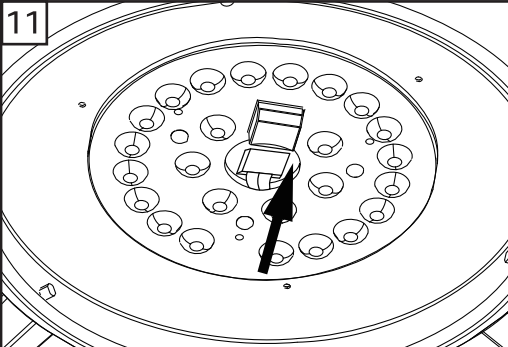


10

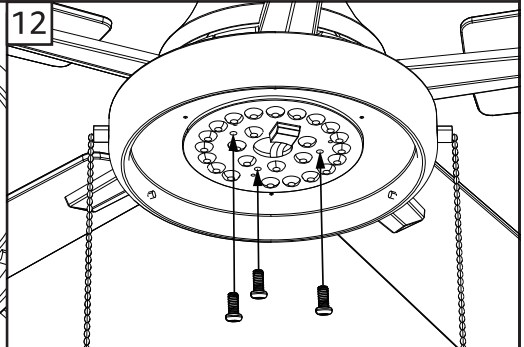


- Push the lamp body upward, connect one wire.
- Align the 'A' mark on the light panel with the 'A' mark on the circular plate. Route the blue and white wires of the pull-chain switch through the notch on the plate.

11



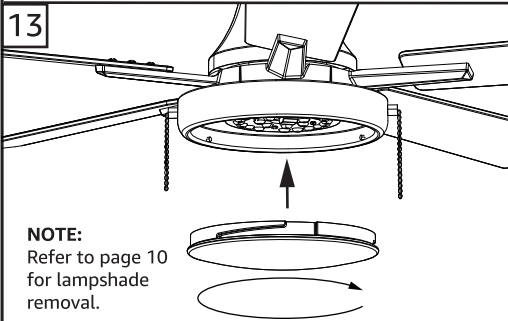
12



- Connect the LED board wire connector.
- Secure the lamp body to the motor using the 3 screws from step 8.

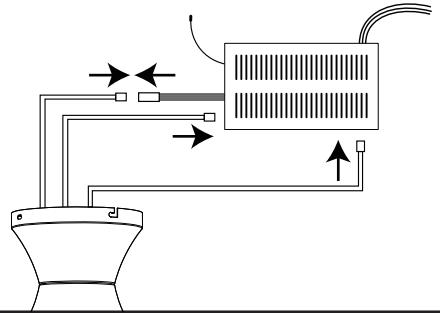
Installation

13



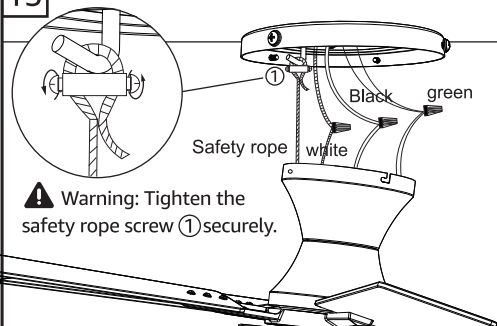
NOTE:
Refer to page 10
for lampshade
removal.

14



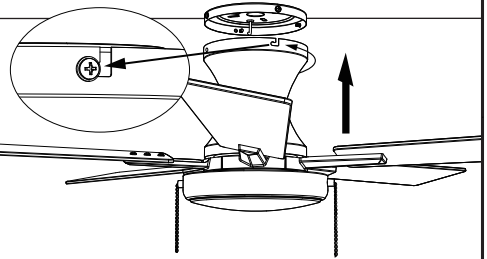
- Locate the locking point and secure the lampshade by rotating it .
- Connect the 3 corresponding wires between the receiver and the fan motor.

15



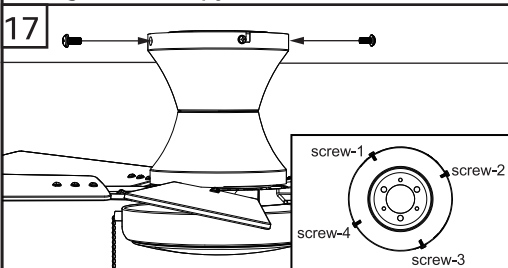
⚠ Warning: Tighten the
safety rope screw ① securely.

16

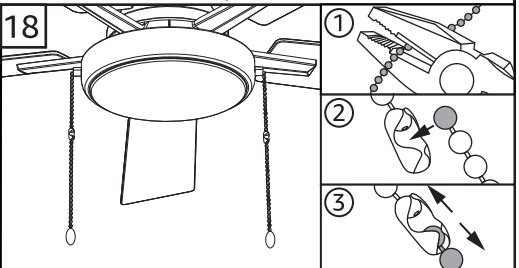


- Use the safety rope to hang the ceiling fan to the bracket hook.
- Wiring:**
Connect the "Neutral wire" (white wire) from ceiling to the white wire.
Connect the "Live wire" (black wire) from ceiling to the black wire.
Connect the "Ground wire" (green or yellow/green or bare) from ceiling to the bare wire.
 - Align the canopy L slot to the bracket screw, rotate to certain position.

17




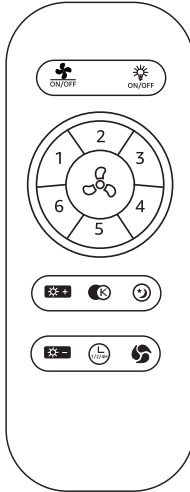








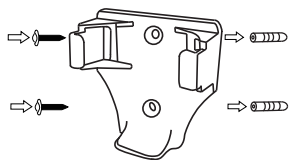
18



- Lock the other 2 screws and ensure that the 4 screws are tightened.
- Extension chain Installation: First, trim the chain to the required length. Then, insert the end bead into the connector slot and pull on both sides to secure it.


Remote Control

To operate the fan, please install 2 AAA batteries (included) in the handheld remote transmitter. If not used for extended periods of time, remove the batteries to prevent damage to the transmitter. Store the remote away from excessive temperatures and humidity.

 ON/OFF	Fan on/off	
 ON/OFF	Light on/off	
	Indicator light	
1-6	Fan speed setting	
	Brightness +	
	Brightness -	
	CCT change	
 1/2/4H	Timer setting (1H/2H/4H) (Any other operation after setting the timer will result in its cancellation)	
	Night light	
	Air flow direction function	
<p>Installing Wall Plate: Attach wall plate using the two provided screws.</p> 		

Pairing method: (single/multiple fans)

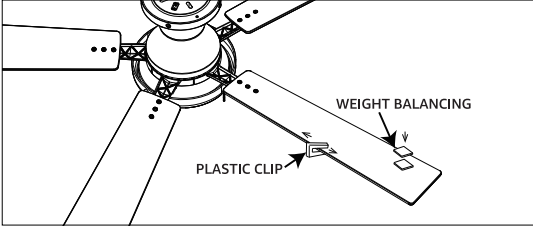
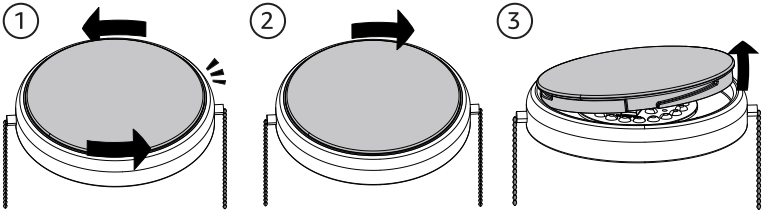
The remote control transmitter can be used to control multiple receivers.

1. For the ceiling fan you want to pair, turn the main power switch off for at least 60 seconds.
2. Turn on the main power switch of the ceiling fan, then press and hold the  ON/OFF button within 3s.
3. Wait for the buzzer to emit beeps, then release the button. Pairing is complete. If the pairing process is unsuccessful, repeat above steps.

Troubleshooting

PROBLEM	SUGGESTED REMEDY
If Fan Does Not Start	<ol style="list-style-type: none"> 1. Check main and branch circuit fuses or circuit breakers. 2. Make sure that the wall control is turned "ON" 3. Check line wire connections to fan and switch wire connections in switch housing. CAUTION: Make sure main power is turned off. 4. Make sure battery has power, change battery(2*AAA) to try again. 5. The remote controller is not paired, check Page.8 to pair. 6. The motor or receiver or remote controller is fault, contact our customer service.
If Fan Sounds Noisy	<ol style="list-style-type: none"> 1. Make sure all screws in motor housing are snug. (not over tightened) 2. Too close to the wall, make sure the blades at least 3ft to the wall. 3. Make sure wire connectors in switch housing are not rattling against each other or against the interior wall of the switch housing. CAUTION: Make sure main power is turned off before entering switch housing. 4. Some fan motors are sensitive to signals from Solid State variable speed controls. DO NOT USE a Solid State variable speed control. 5. Allow "break-in" period of 24 hours. Most noises associated with a new fan will disappear after this period.
If Fan Wobbles	<ol style="list-style-type: none"> 1. Interchanging two adjacent blades could redistribute the weight and possibly result in smoother operation. 2. The balancing kit should only be used if there is an unacceptable amount of fan wobble after completing all the steps: <u>How to use balancing kit:</u> <ol style="list-style-type: none"> (1) Turn the fan on and set the speed control setting to a speed at which the wobble is the greatest. (2) Turn off the fan and allow it to come to a complete stop. Select one blade and place the balance clip on it, halfway between the blade holder and the blade tip on the trailing edge of the blade. (3) Turn the fan on. Note whether the wobble has increased or decreased. Turn the fan off, move the clip to another blade, and retest. Repeat this procedure on all blades, noting the blade on which the greatest improvement is achieved.

Troubleshooting

PROBLEM	SUGGESTED REMEDY
If Fan Wobbles	<p>(4) Move the clip back to the blade that showed the greatest improvement. Move the clip inward and outward on this blade and operate the fan to find the position where the clip gives the greatest improvement.</p> <p>(5) Remove the clip and install a balancing weight to the top of the blade along the centerline, near the point where the clip was positioned.</p> <p>(6) If the fan wobble problem has not been corrected, you can try to improve the balancing further by using the balancing clip and additional weights.</p>  <p>The diagram shows a top-down view of a fan blade attached to a central hub. A small rectangular plastic clip is attached to the inner edge of the blade. Further out along the centerline of the blade, there is a designated area for a weight, labeled 'WEIGHT BALANCING'. A 'PLASTIC CLIP' is also labeled with an arrow pointing to the clip on the blade.</p>
If Light Does Not Worker Flickering	<ol style="list-style-type: none"> 1. Check for loose or disconnected wires in fan switch housing. 2. Check the wiring of receiver to the light kit. 3. Check for loose or disconnected wires in light kit, make sure connector is correct inserted. 4. Check for faulty light bulbs. (light bulb version only) 5. There are too many ceiling fans with different control systems in the same area. Shut down other ceiling fans to check if the flickering still occurs. <p>CAUTION: Make sure the main circuit is turned off before entering the switch housing.</p>
Unable To Remove The Lampshade	 <p>The diagram consists of three numbered steps showing a lampshade being rotated and then lifted. Step 1 shows the lampshade with a clockwise rotation arrow. Step 2 shows the lampshade with a counter-clockwise rotation arrow. Step 3 shows the lampshade being lifted straight up, indicated by an upward arrow.</p> <p>Rotate the lampshade clockwise as indicated by the arrow until a 'click' is heard at the tightest point. Then, slightly reverse it counterclockwise before lifting it straight up for removal.</p>

Customer Service

30-Days Full Refund Guarantee

If you are not completely satisfied or the item isn't what you expected, just tell us within 30 days. We will give you a full refund unconditionally.

Friendly Reminder

It's better to contact us than leaving a negative shopping experience. Nothing is more important than your satisfaction, and we will do our best to serve you.

Quick Response within 12 Hours

You can contact us without any hesitation at any time of the day, and we will reply to you within 12 hours. (It would be appreciated if you could provide us with a video or pictures, if available)

2-year Warranty

Your fan light comes with a two-year warranty. If a malfunction occurs due to product quality issues, we will assist in diagnosing the problem and provide replacement parts free of charge to ensure your fan light resumes normal operation.