

# Installation Manual



Scan With WeChat

## List of accessories:

Reverse

Front

Reverse

Front

Side left bracket\*1

Side right bracket\*1

Backboard\*5

Door panel\*5

Reverse

Door suction hole  
Front

Ordinary laminates\*5

Reverse

Top plate \*1

Front

Door mat

Door stopper

Strip

Handle

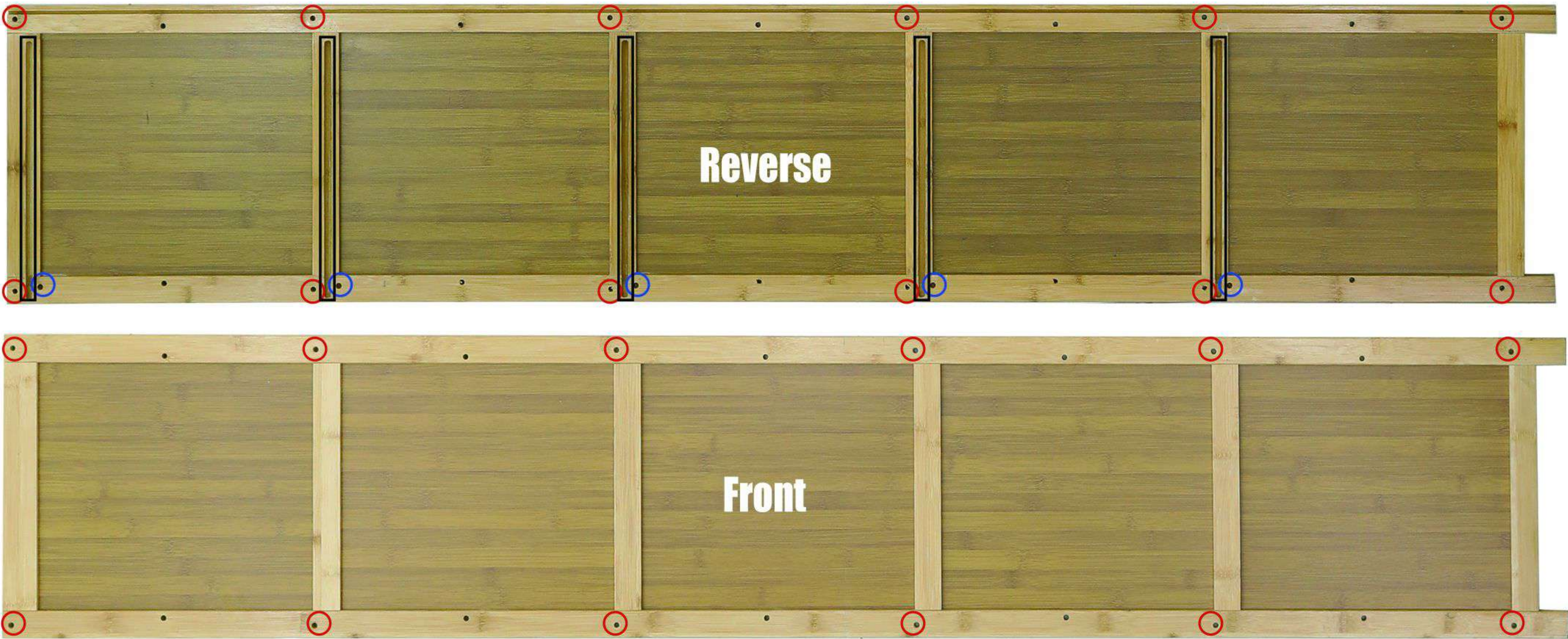
Long screw

Flat head screw

Short screw

Installation tools

### Side bracket hole position description



For installing layer boards with red circles

Blue circle plug metal strip

Used for metal strips on black ring card door panels



# Installation steps



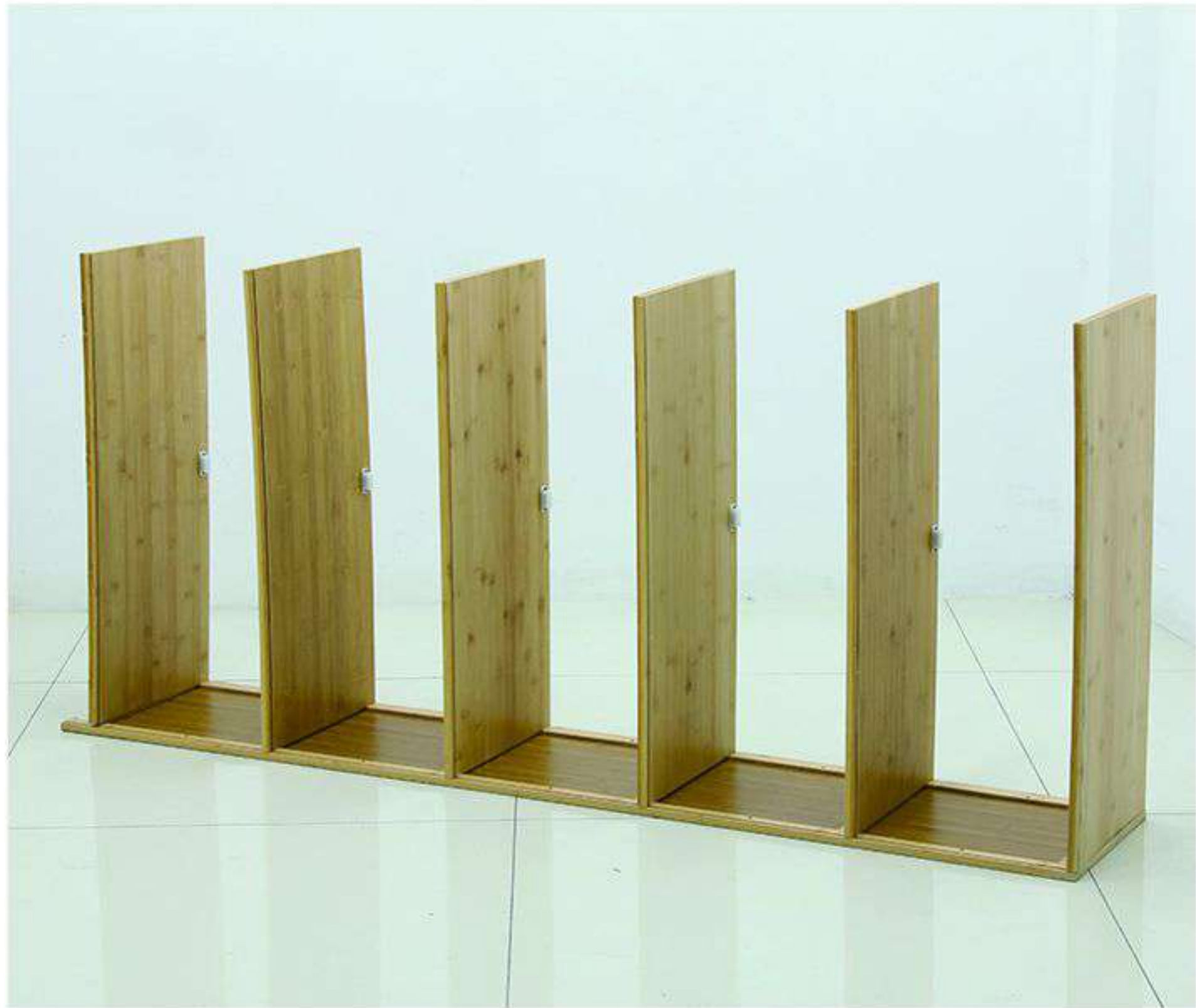
1. Take out the ordinary layer board and install the door stopper with short screws, leaving one layer board and not installing the door stopper.



2. Take out the left side bracket and install the ordinary layer board with the door stopper installed. Use long screws to install the opposite side of the side bracket, with the side with the door stopper facing upwards.



3. Take out the top layer board and fix it with long screws and side brackets on the opposite side, paying attention to aligning the grooves of the layer board and bracket.



4. Flip the shelf.



5. Take out the backboard and insert it along the groove of the layer board.



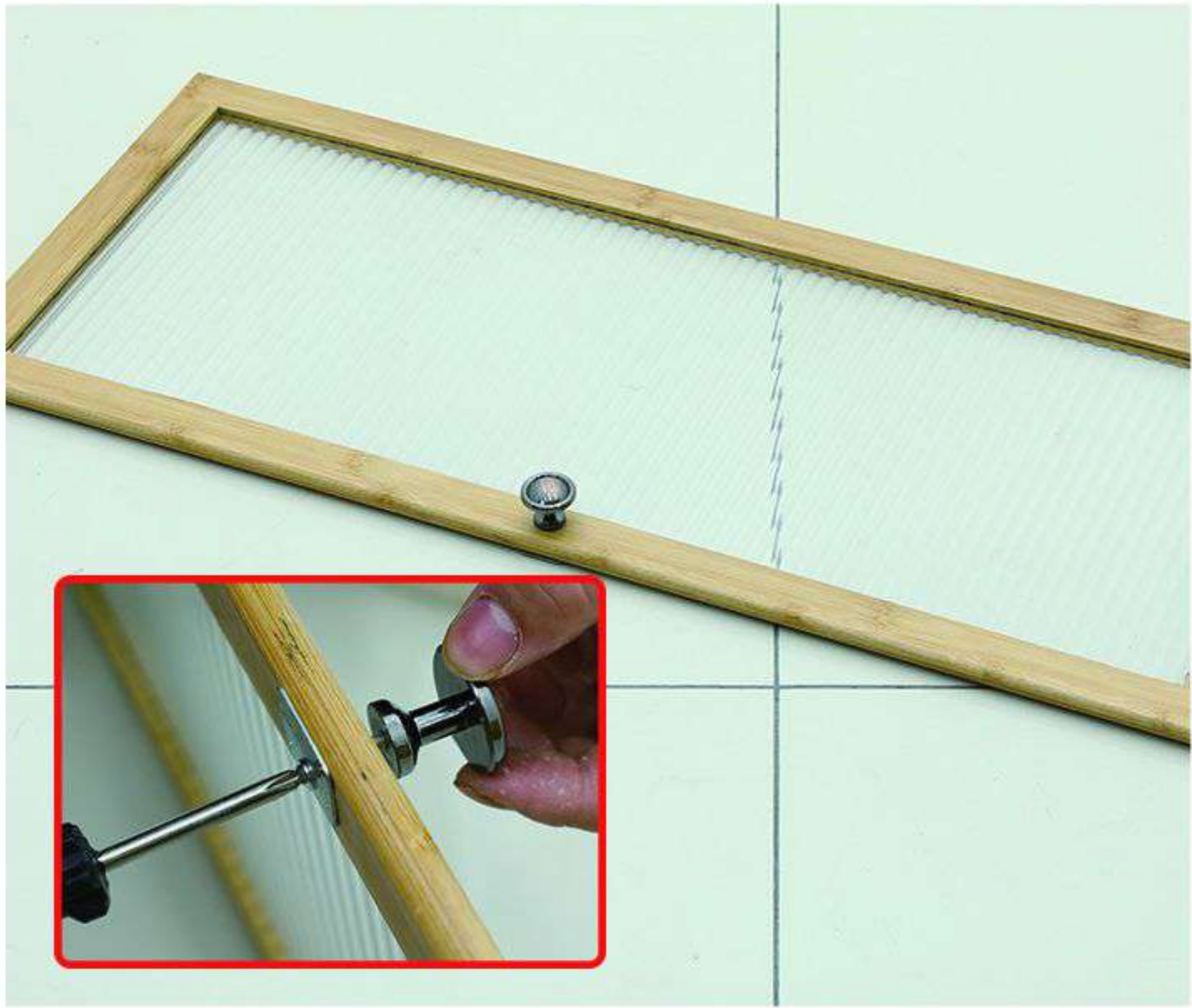
6. Take out the side bracket and install it with a long screw on the right side. Do not tighten the screw on the front row yet.



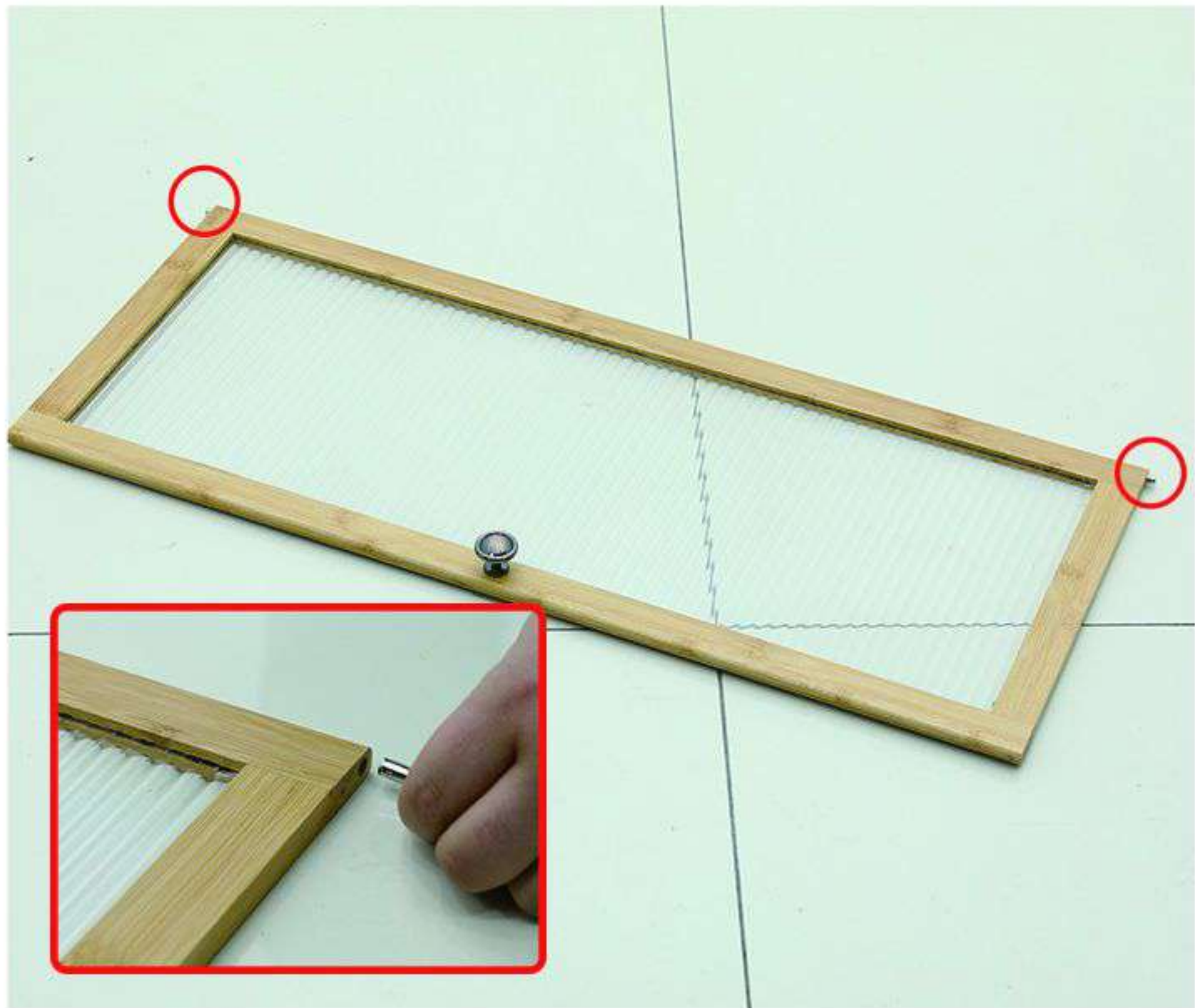
7. Flip the shelf.



8. Insert the metal strip into the side bracket hole.



9. Take out the door panel, door handle, and door mat and install them with flat head screws, paying attention to aligning the grooves of the layer board and bracket.



10. Take out the metal strip and plug both ends of the door panel.



11. Take out the installed door panel, and clip the metal strip on the door panel into the groove of the side bracket.



12. Remove the long screw and tighten the screw on the right side of the bracket that has not been tightened.