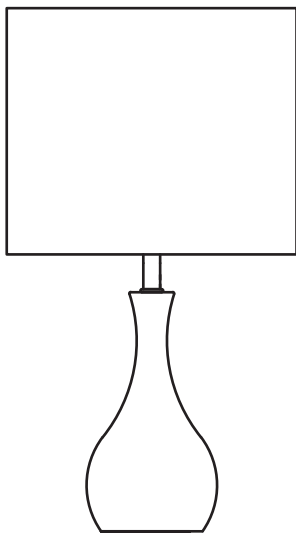


Table Lamp

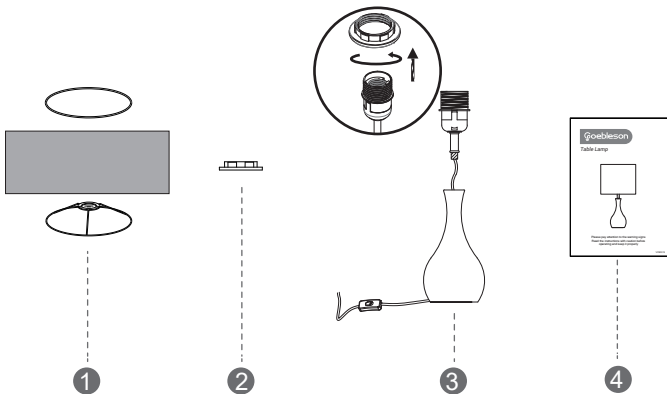


Please pay attention to the warning signs
Read the instructions with caution before
operating and keep it properly

Warning

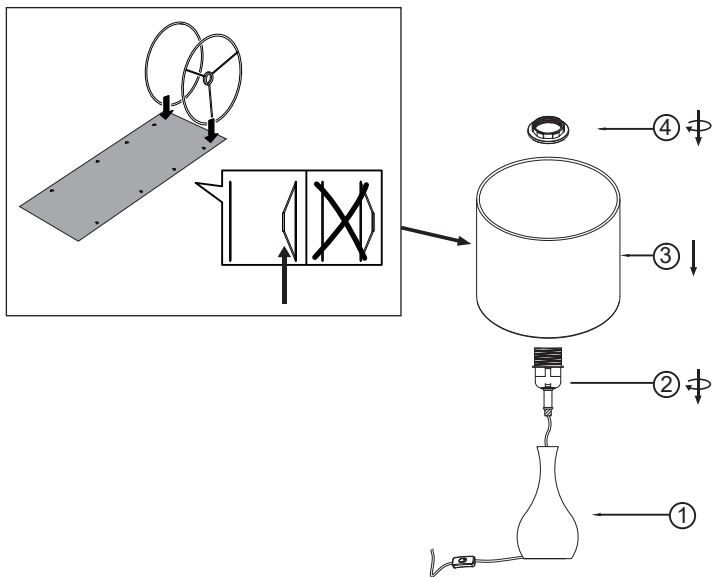
1. Before assembly, lay out all parts on a clean, flat surface and inspect each part for defects that may have occurred during shipping.
2. Inspect the wire insulation for any cuts, abrasions, or exposed copper that may have occurred during shipping. If there are any defects, DO NOT continue assembly. Please contact our customer service team immediately.
3. Consult a qualified electrician if you have any electrical questions.
4. To reduce the likelihood of tipping over, we recommend placing the lamp behind furniture and keeping children and pets away.
5. Never drape clothes over the lamp.
6. To prevent children from suffocating and choking, keep them away from packing materials.
7. Please keep this manual and pass it along when transferring the product.

Packing List



Part	Description	Quantity
1	Lampshade	1
2	Socket Ring	1
3	Base	1
4	Instruction Manual	1

Assembly Instructions



1. Pull and tighten the power cord, then screw the socket ② clockwise onto the base ① until tight.
2. Place the shade ③ on socket ② then screw on the socket ring ④ to fix the shade.
3. Screw the Bulb(not included) clockwise onto Socket ② until tight.

Specifications

- Product Height: 14.2 in (36cm)
- Wire Length: 65 in (165cm)
- Input Voltage: 120Vac 60Hz
- Max.Load Power: LED Bulb 12W or Incandescent Bulb 60W
- Socket Type: Standard Medium E26
- Bulb: N/A

One-Year Limited Warranty

We provide a one-year warranty for materials and workmanship from the date of purchase. Please note that the warranty does not cover damage caused by personal misuse or improper installation. Kindly attach your Order ID and Name so that our dedicated customer service team can assist you more efficiently.