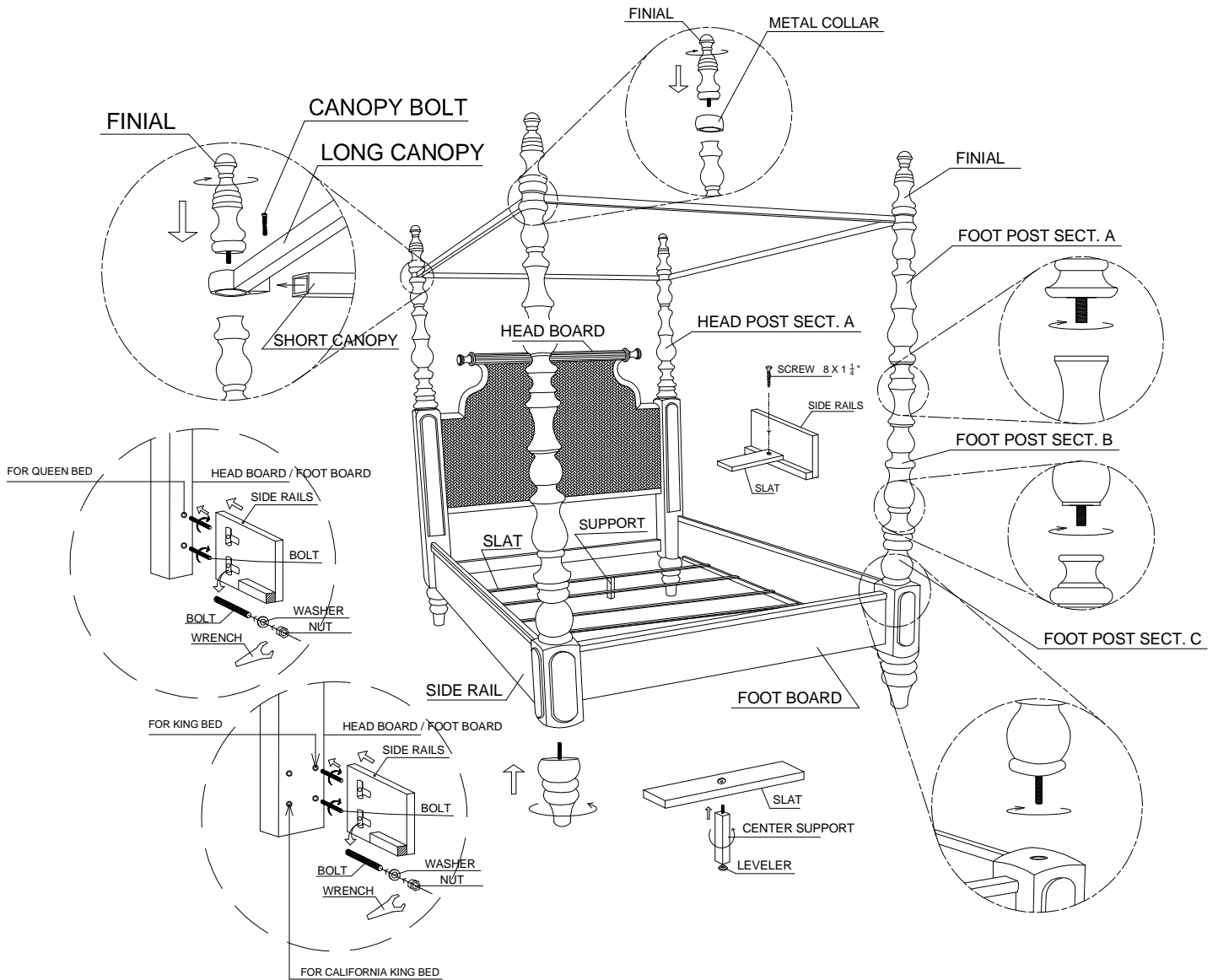


ASSEMBLY INSTRUCTIONS
619-173/174/175 Queen/King/California King Bed



NO	DESCRIPTION	QUANTITY
1	HEAD BOARD	1 SET
2	FOOT BOARD	1 SET
3	LONG CANOPY	2 PCS
4	SHORT CANOPY	2 PCS
5	SIDE RAILS	2 PCS
6	SLAT	3 PCS queen 4 PCS king/cal.king

NO	DESCRIPTION	QUANTITY
7.	CENTER SUPPORT	3 PCS queen 4 PCS king/cal.king
8.	BOLT + WASHER + NUT	8 PCS
9.	SCREW 8 X 1 1/4"	6 PCS queen 8 PCS king/cal.king
10.	WRENCH	1 PC
11.	METAL COLLAR	4 PCS
12.	CANOPY BOLT	4 PCS

For additional consumer assistance please contact your Lexington dealer or call our Consumer Services Department at 1-336-474-5300, Monday-Friday, 8-5 EST

619-173/174/175 Instructions Continued...

Lay headboard and footboard down on non-marring surface.
Insert bolt at end of foot into bottom of head/foot post and turn clockwise until tight.

How to Attach Side Rails to Headboard/Footboard

* All needed hardware is located in a hardware bag which should be taped to inside of side rail.

1. Insert threaded bolt into metal insert in Post thru open hole. Twist clockwise until tight. NOTE: (2) SETS OF HOLES IN POSTS FOR KING/CALIFORNIA KING BEDS.
2. With both threaded bolts in place, and Side Rail positioned with T-slots to inside, slide Side Rail over threaded bolts.
3. Add flat washer and nut to threaded bolt.
4. Tighten nut with wrench until tight. Repeat process for other three corners.

How to Attach Slats to Side Rails

1. Insert bolted end of center support into bottom of slats. There is a T-nut in the center of the board. Rotate clockwise until tight.
2. For Queen beds, place a slat in middle of side rail, and then place other two slats 3" to 5" inward from each end of wood cleats.

For King and California King beds, place one slat 3" to 5" inward from each end of wood cleats. Place two center slats between two

end slats so that there is an equal amount of space between all four slats. (Queen beds have three slats. King and California King beds have four slats.)

3. Adjust bottom leveler so that center leg and leveler sit ½" above floor.
4. Secure slats with wood screws provided. Note that top side of slat has larger hole.

How to Assemble Posts to Headboard/Footboard

1. Screw head post section A into square section until tight.
2. Insert metal collar on top of head post section A.
3. Insert bolt in bottom of finial into head post section A and turn until tight (if not assembling with canopy).
4. Repeat for other head post.
5. Screw foot post section C into square section until tight.
6. Screw foot post section B into foot post section C until tight.
7. Screw foot post section A into foot post section B until tight.
8. Insert metal collar on top of foot post section A.
9. Insert bolt in bottom of finial into foot post section A and turn until tight (if not assembling with canopy).
10. Repeat for other foot post.
 - For low-post footboard version, remove finial from foot post section A. Remove foot post sections A and B. Screw finial back into foot post section C.

How to Assemble Canopy

1. If using canopy, remove metal collar before finial installation.
2. Lay long canopy rail on top of head and foot posts. Long canopy rails have a ring at the ends that will go in place of the metal collar.
3. Place the other long canopy rail on other head and foot posts.
4. Install short canopy rail onto square protrusion of long canopy rail. It may be necessary to lift the end of the long canopy rail off the top of the post. Repeat this for the other short canopy rail.
5. Insert bolt through top of assembled canopy rails. Tighten with an Allen Wrench.
6. Install finials back onto top of posts and turn until tight.

For additional consumer assistance please contact your Lexington dealer or call our Consumer Services Department at 1-336-474-5300, Monday-Friday, 8-5 Eastern