

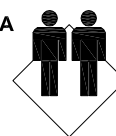
1.0hr

APPROXIMATE ASSEMBLY TIME

1 PERSON OF ASSEMBLY

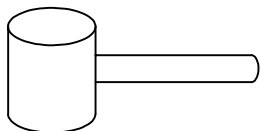


FLOOR AREA
1.0M X 1.0M

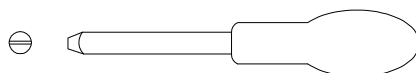


REQUIRED ASSEMBLY SPACE

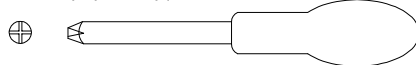
REQUIRED ASSEMBLY TOOLS



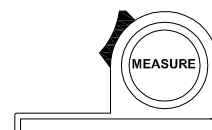
SOFT RUBBER HAMMER



SLOTTED SCREWDRIVER

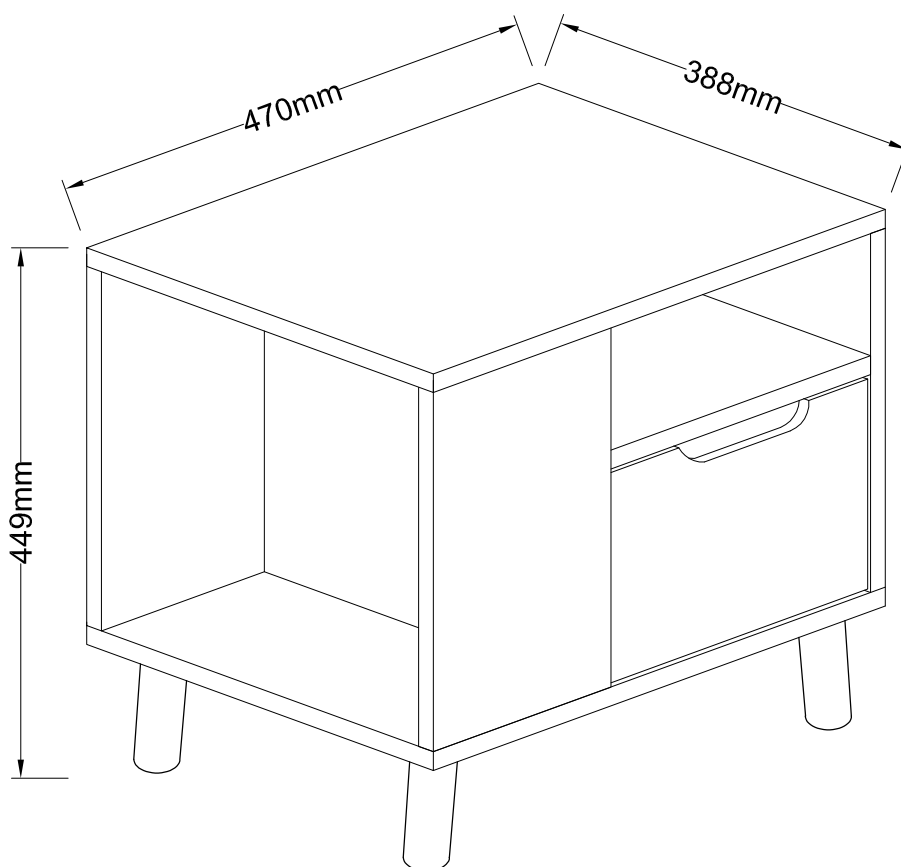


POZI SCREWDRIVER



MEASURING TAPE

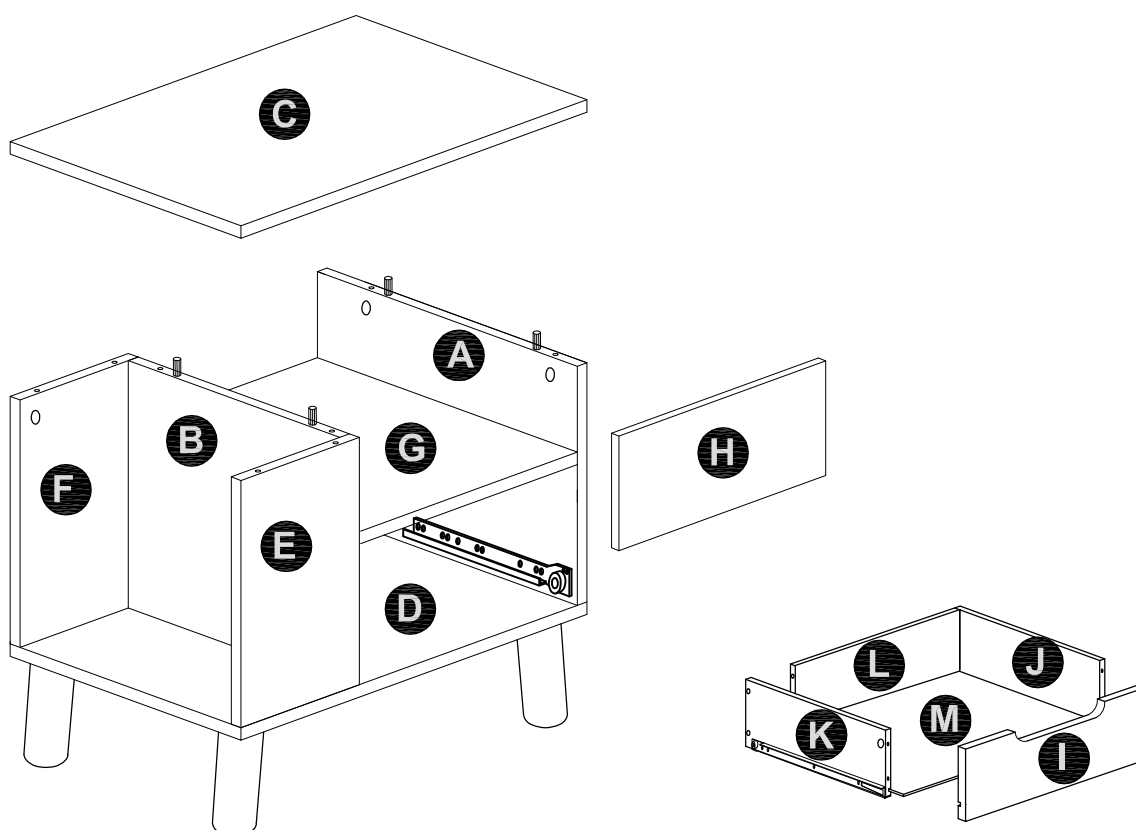
ASSEMBLED DIMENSIONS



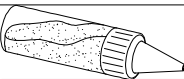


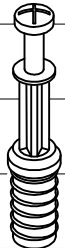
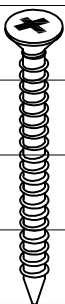

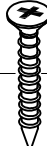
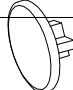
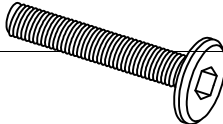
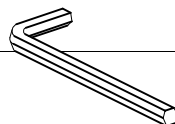



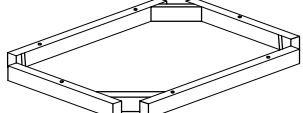
NOTE : THE MAXIMUM WEIGHT THIS PRODUCT CAN HOLD UP TO 25 KGS.

NO.	PART LIST	QTY	NO.	PART LIST	QTY
(A)	RIGHT SIDE PANEL	1	(I)	DRAWER FRONT	1
(B)	LEFT SIDE PANEL	1	(J)	DRAWER RIGHT SIDE PANEL	1
(C)	TOP PANEL	1	(K)	DRAWER LEFT SIDE PANEL	1
(D)	BOTTOM PANEL	1	(L)	DRAWER BACK PANEL	1
(E)	SIDE PANEL(RIGHT)	1	(M)	DRAWER BASE	1
(F)	SIDE PANEL(LEFT)	1			
(G)	FIXED PANEL	1			
(H)	BACK SUPPORT	1			

PARTS LIST



HARDWARE LIST

						4cm
						3cm
						2cm
						1cm
						0cm
1X 1 GLUE 10CC	10X Dia.15mm 2 LARGE CAMLOCK	2X Dia.15mm 3 DRAWER CAMLOCK	12X M6.5 4 QUICKFIT	8X M8 x 38mm 5 FLAT HEAD SCREW	20X Dia.6 x 30mm 6 WOOD DOWEL	
						4cm
						3cm
						2cm
						1cm
						0cm
4X M3.5 x 25mm 7 FLAT HEAD SCREW	6X M4 x 30mm 8 FLAT HEAD SCREW	6X Dia 17mm 9 UNIVERSAL CAP (OPTIONAL)	4X M8 x 70mm 10 ALLEN HEAD BOLT	1X M5 11 ALLEN KEY		
						
4X 5/16 12 SPRING WASHER		4X 22 x 5/16 13 FLAT WASHER		4X 14 Ø45- 160mm LEG		1X 15 WOODEN FRAME

Top Tips before you start!

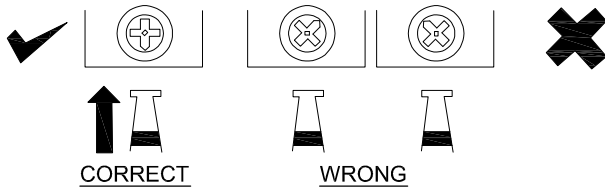
1. Please check that all parts are present before you start the assembly of your furniture.
2. For ease and speed of assembly, we recommend that before you commence each step of the assembly, that you identify all the parts required for that step.
3. For larger items, please ensure that you have sufficient space and people (as indicated on page 1) to assemble your product safely
4. We recommend that, where possible, all items are assembled near to the area in which they will be placed in use, to avoid moving the product unnecessarily once assembled.
5. For the protection of your furniture, particularly items of high gloss finish, we recommend that the product is placed on a protected surface during assembly to prevent any damage.
6. Caution - Electric / Battery operated screw driver NOT RECOMMENDED.
7. During assembly please take care not to over-tighten any fittings, as this may damage the product.
8. Always place the product on a flat, steady and stable surface.
9. Do not sit or stand on the product.
Do not use the product as a stepladder.
10. This product is intended for indoor, household use only as it is non industrial product.
11. This product is constructed from re-inforced hollow board. Excessive pressure cause irreparable damage. Please do not kneel on any part of this product during assembly.

Care and Maintenance of your Furniture

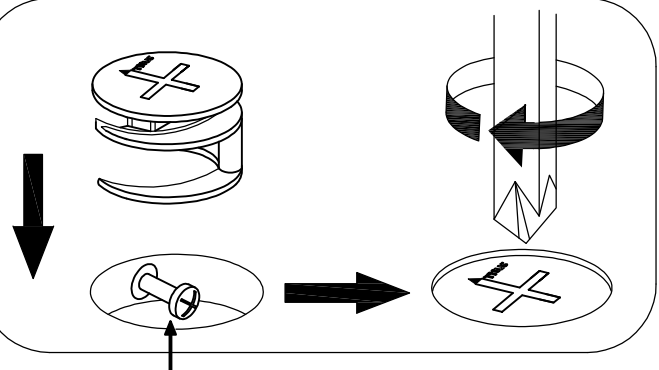
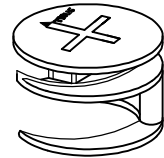
- Please periodically check all fittings and re-tighten as necessary.
- To clean your item, please use a damp cloth and wipe clean.
- Never allow any kind of liquid to remain on your furniture.
- Please do not place hot items (e.g. hot drinks) directly on to the wood surface.
- Please do not drag and pull your furniture.

SPECIAL TIPS FOR FITTING CAM-LOCKS AND QUICKFIT

WHEN FITTING CAMLOCK
ENSURE STARTING POSITION IS CORRECT
BEFORE YOU INSERT CONNECTING QUICKFIT
TURN CLOCKWISE UNTIL SECURE

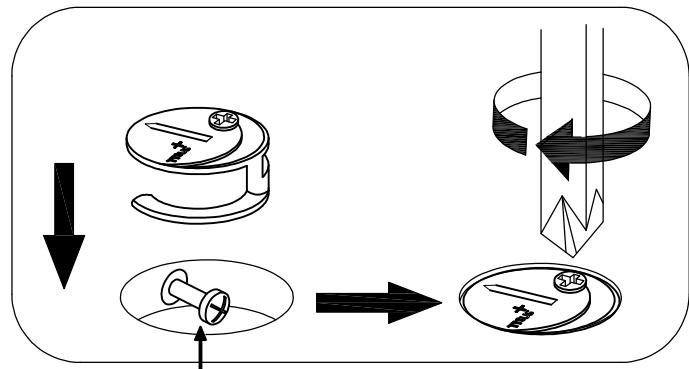


**LARGE
CAM-LOCK**



Quickfit head needs to be in centre

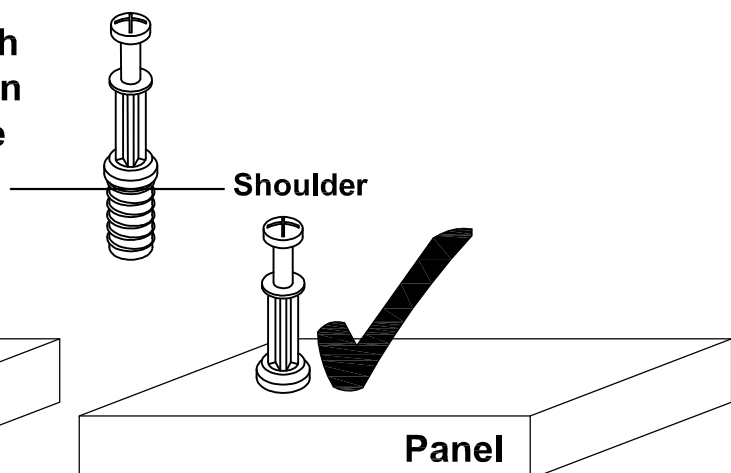
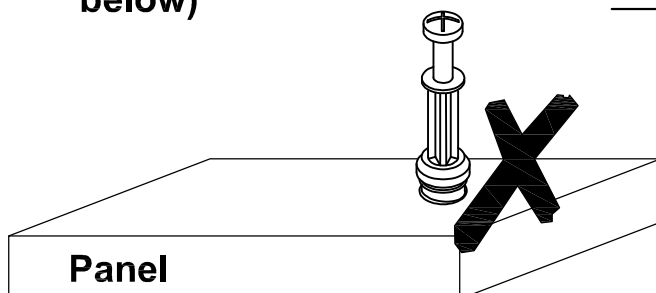
**DRAWER
CAM-LOCK**



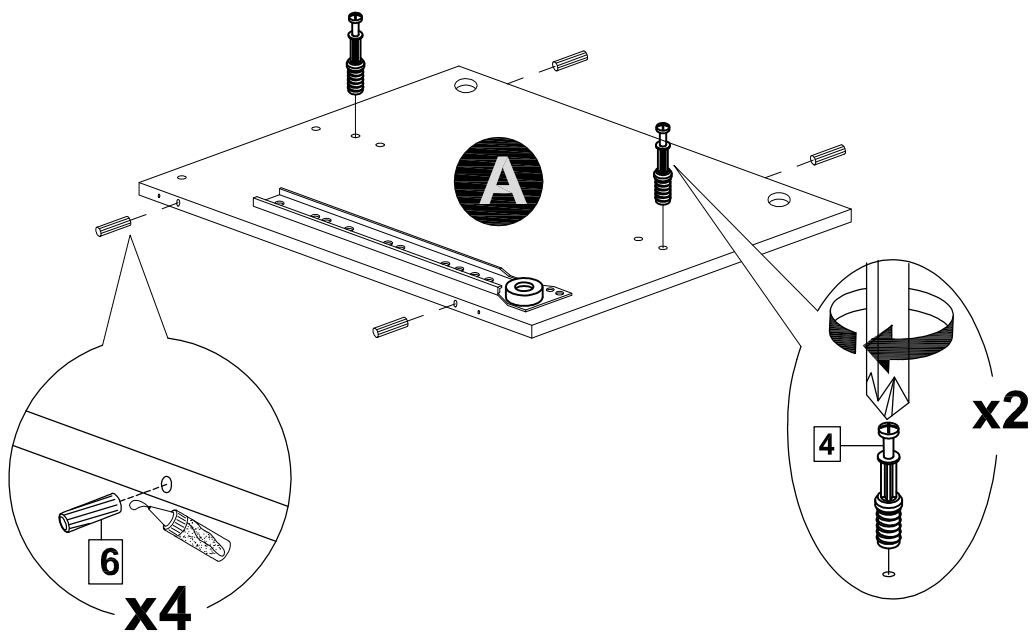
Quickfit head needs to be in centre

QUICKFIT

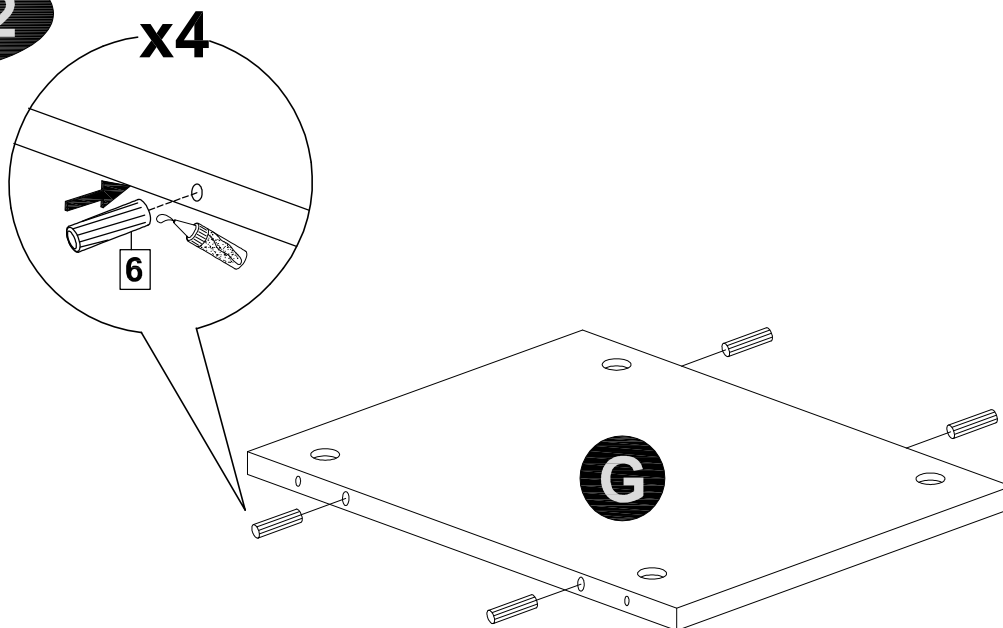
**Tighten until shoulder is flush
with panel. Do not overtighten
or undertighten (see example
below)**



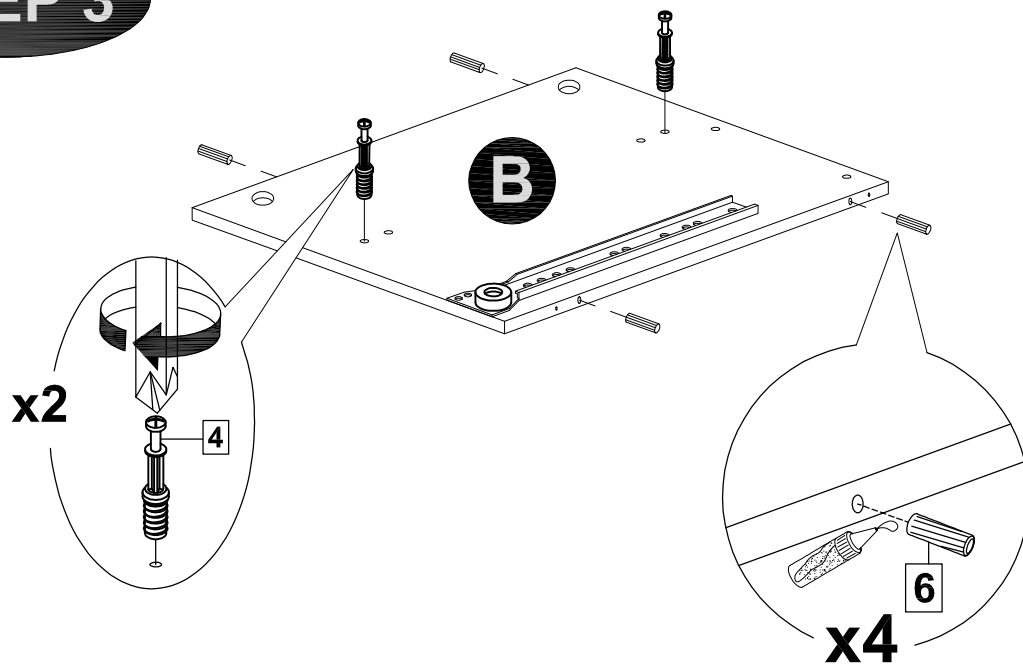
STEP 1



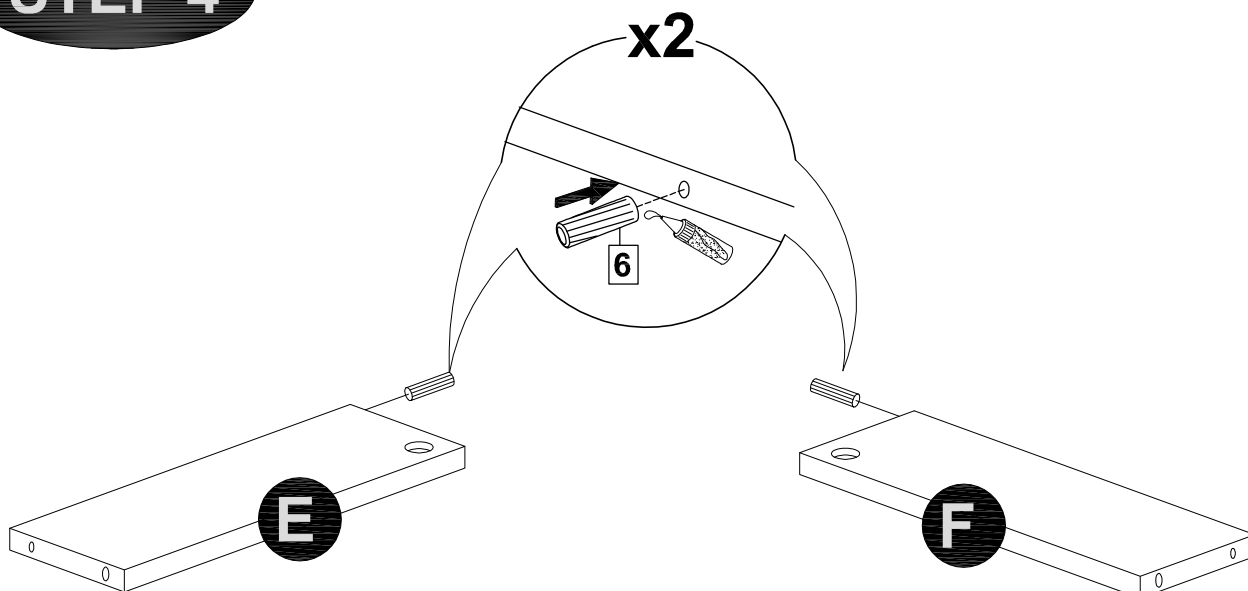
STEP 2



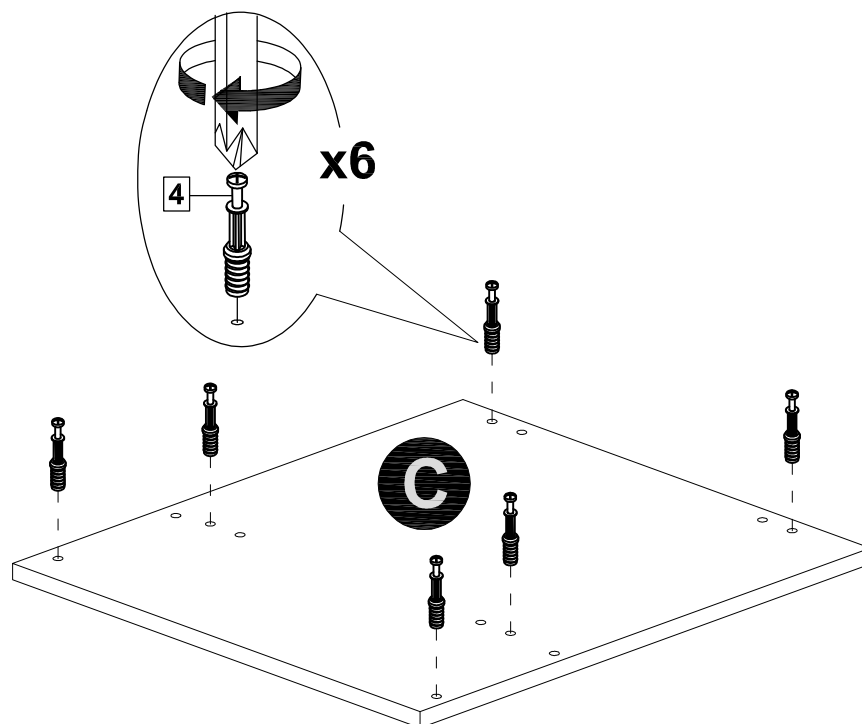
STEP 3



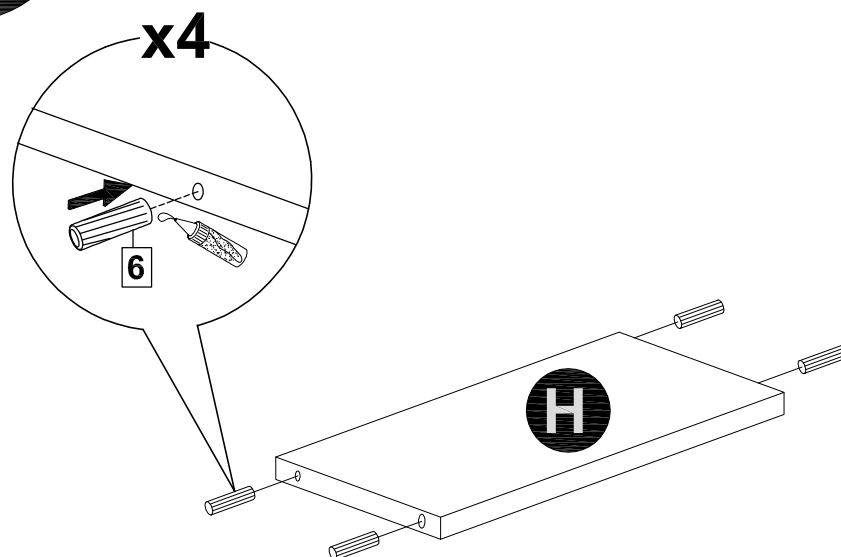
STEP 4



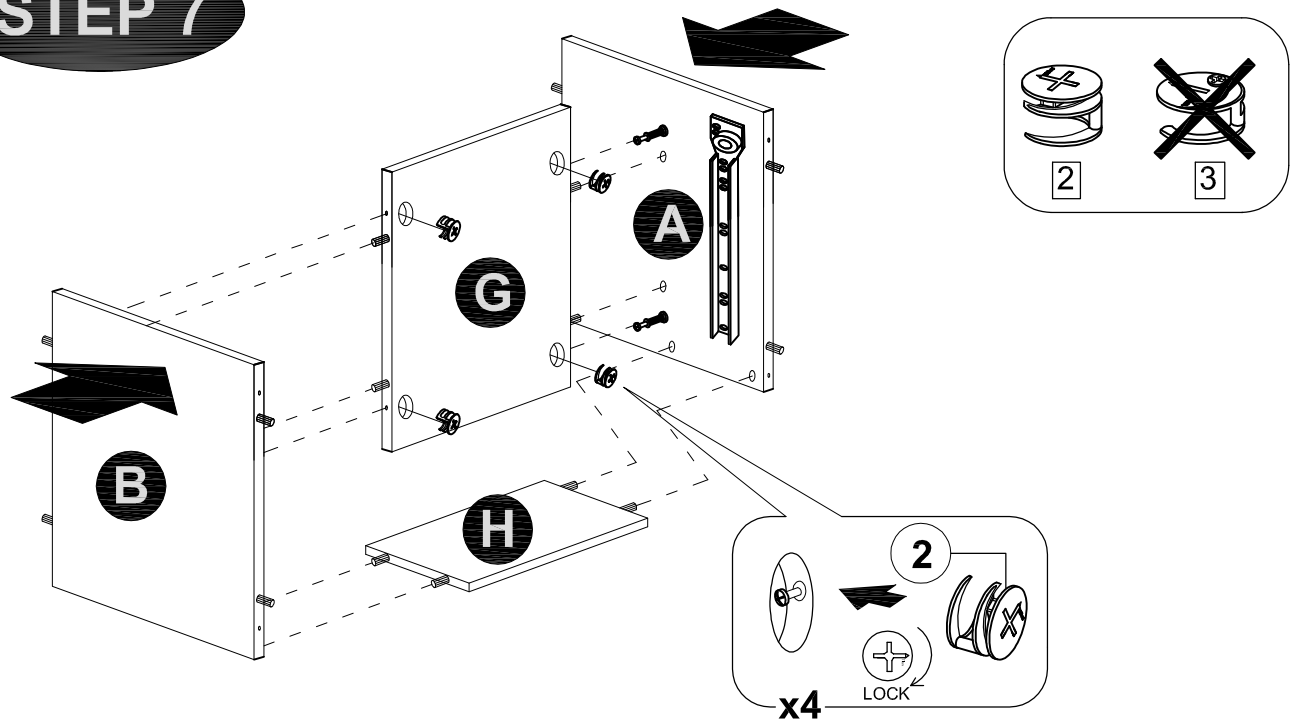
STEP 5



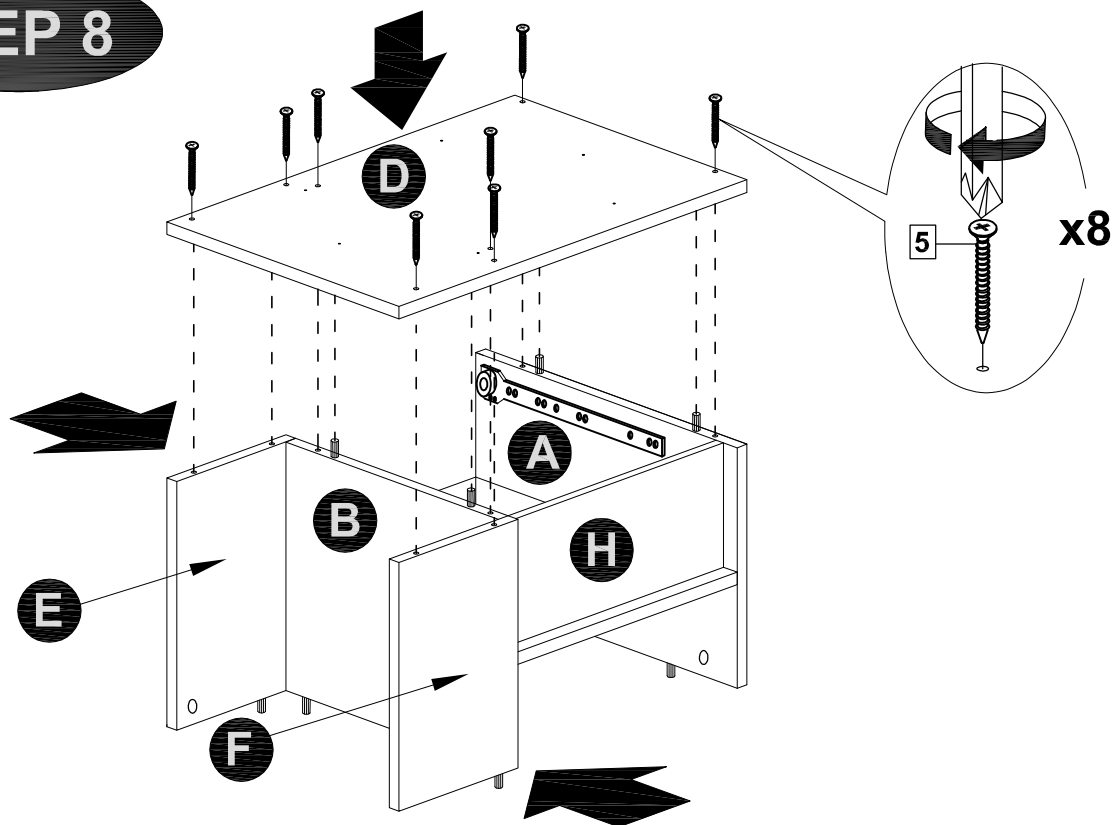
STEP 6



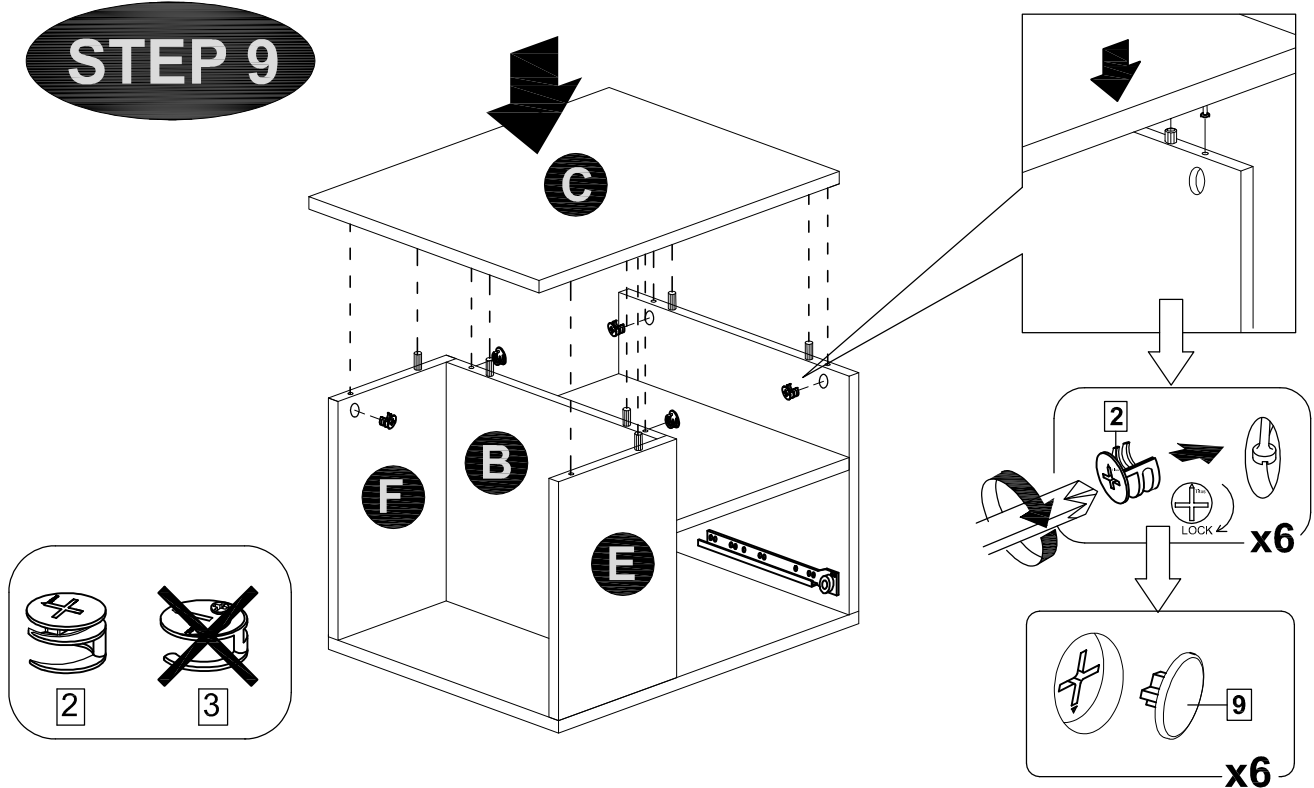
STEP 7



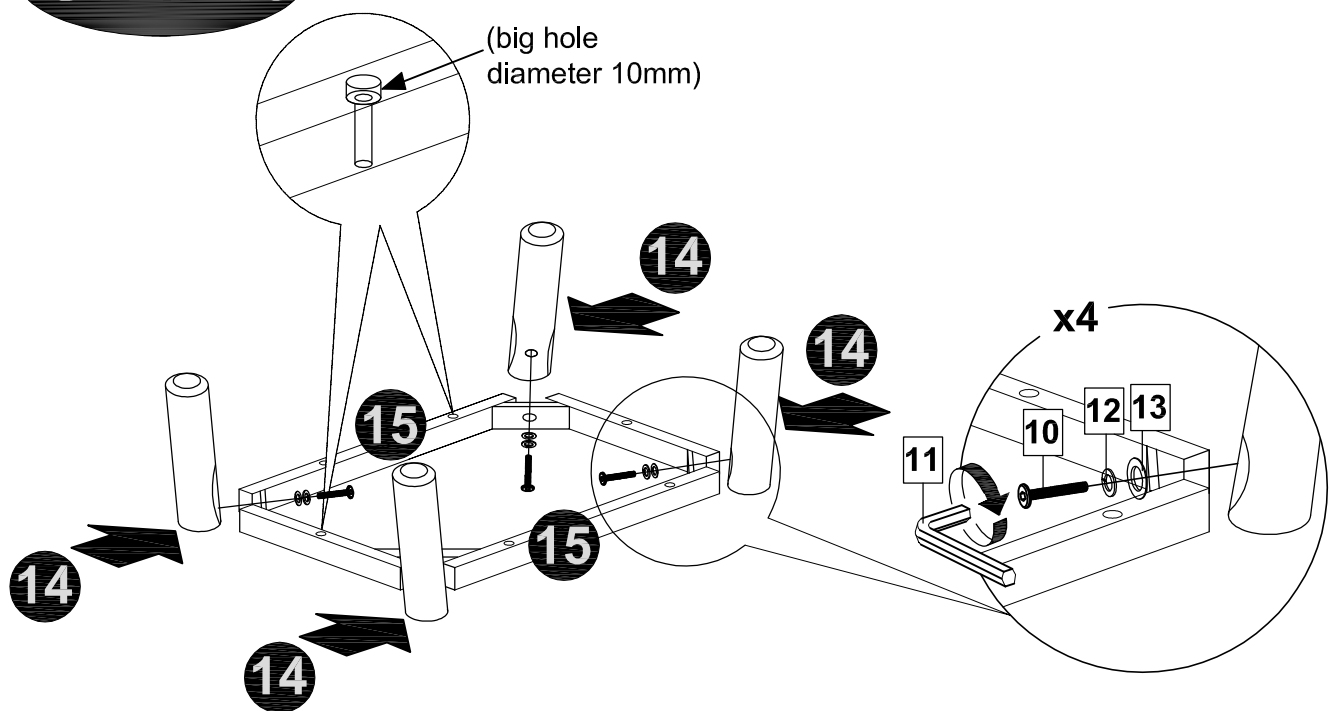
STEP 8



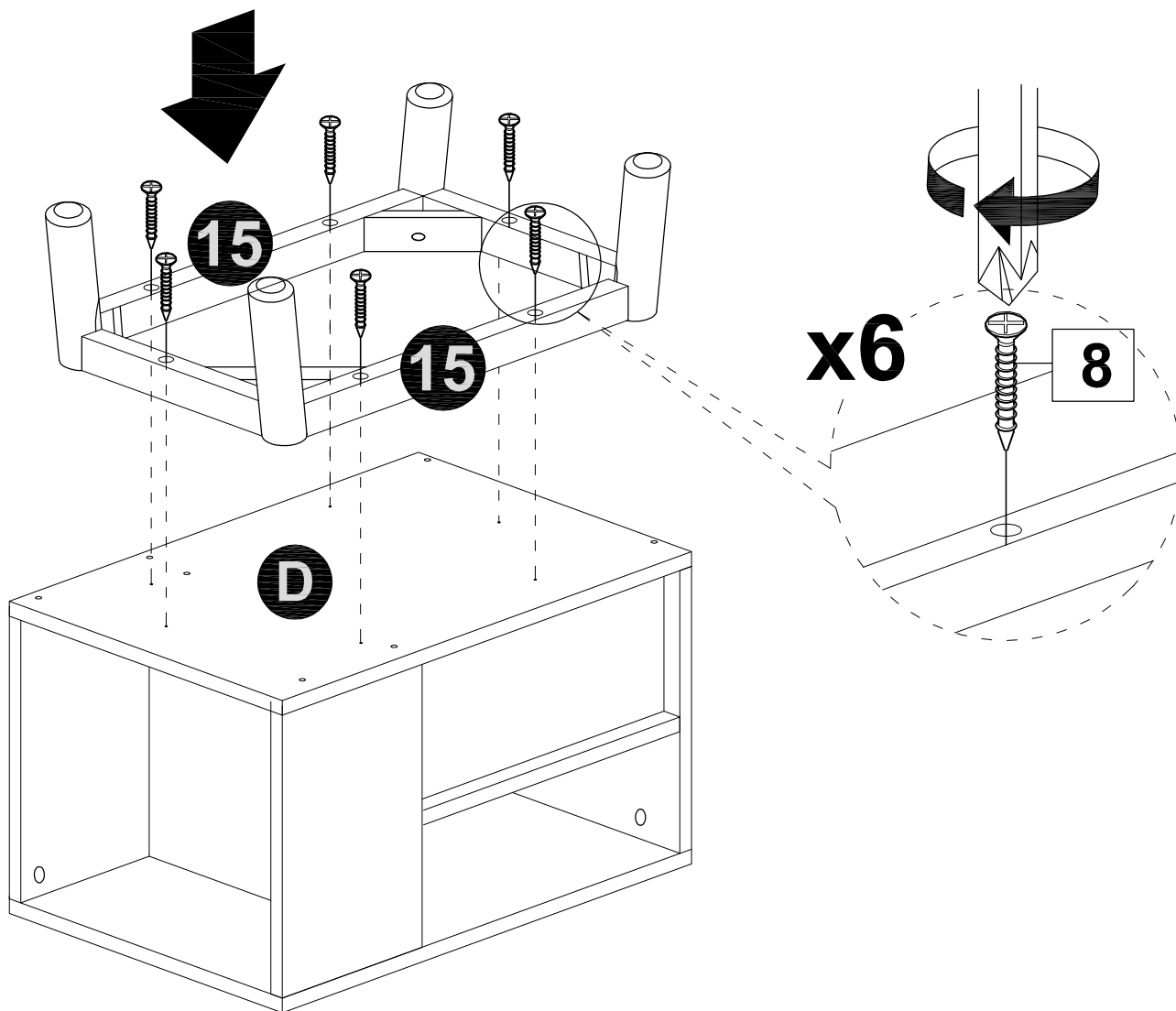
STEP 9



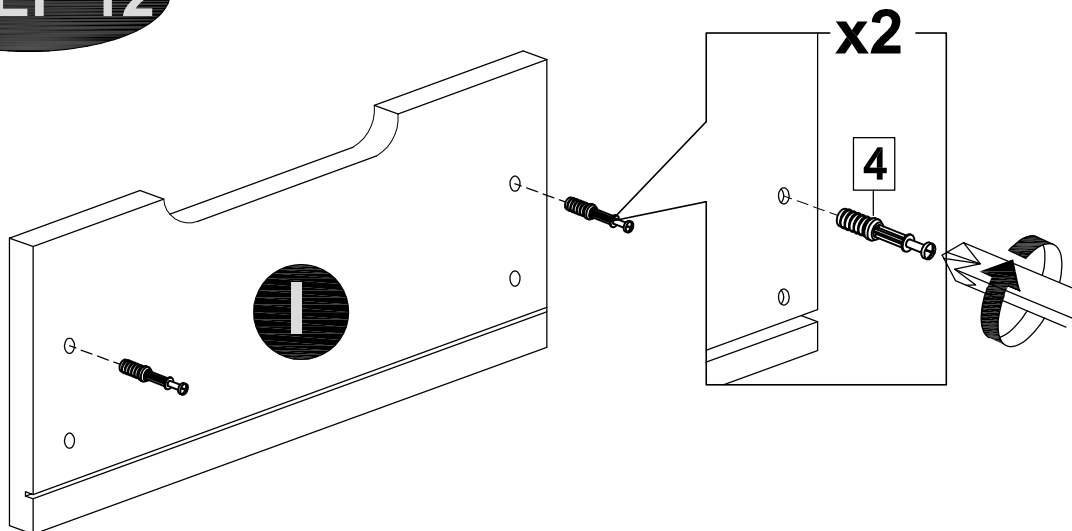
STEP 10



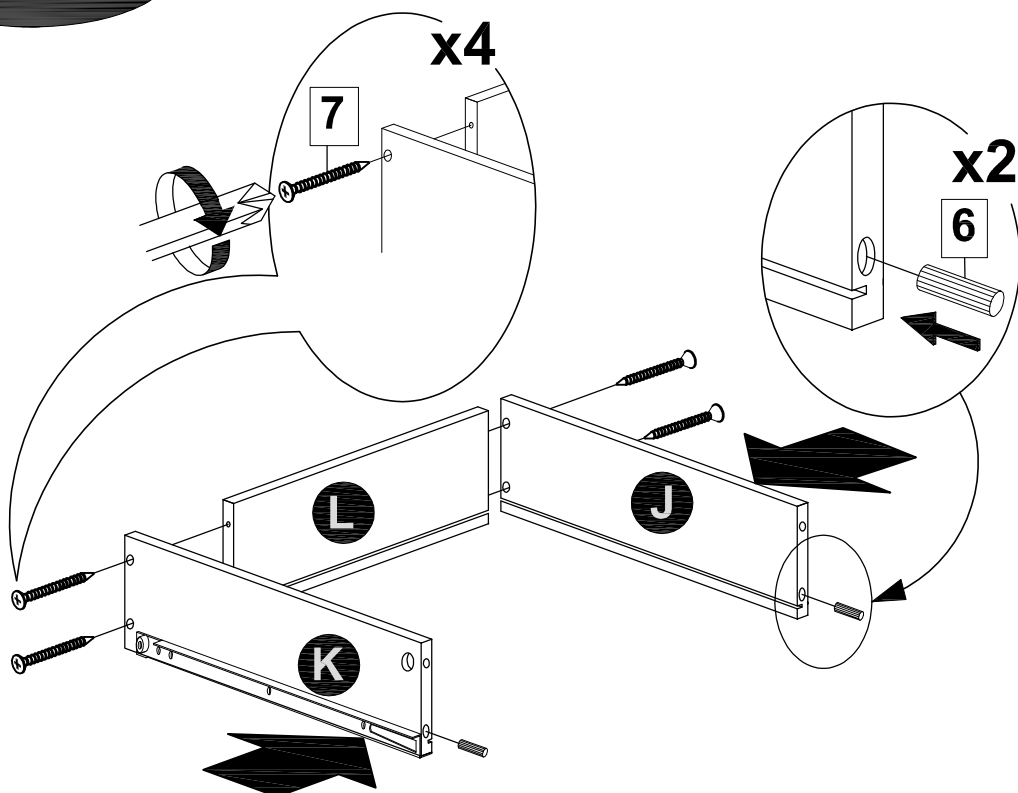
STEP 11



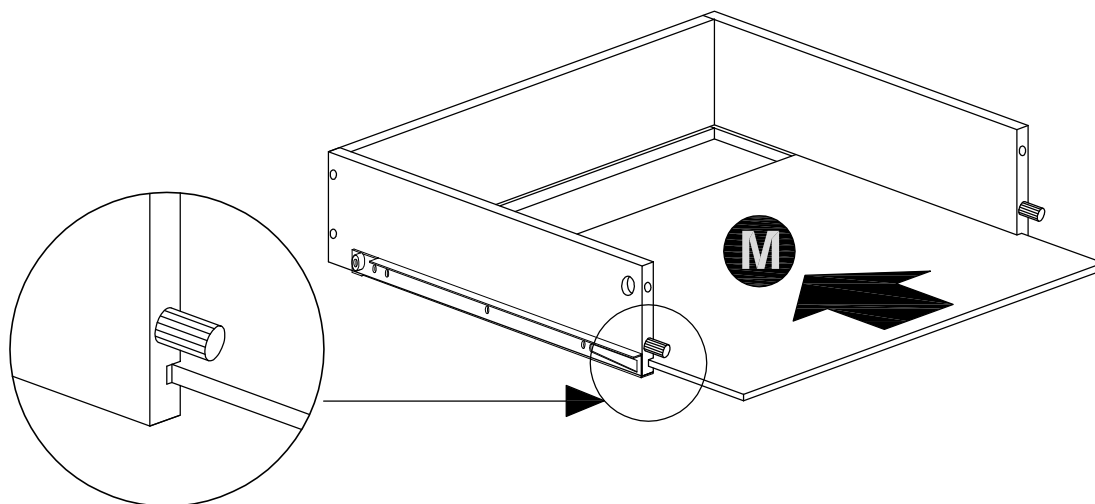
STEP 12



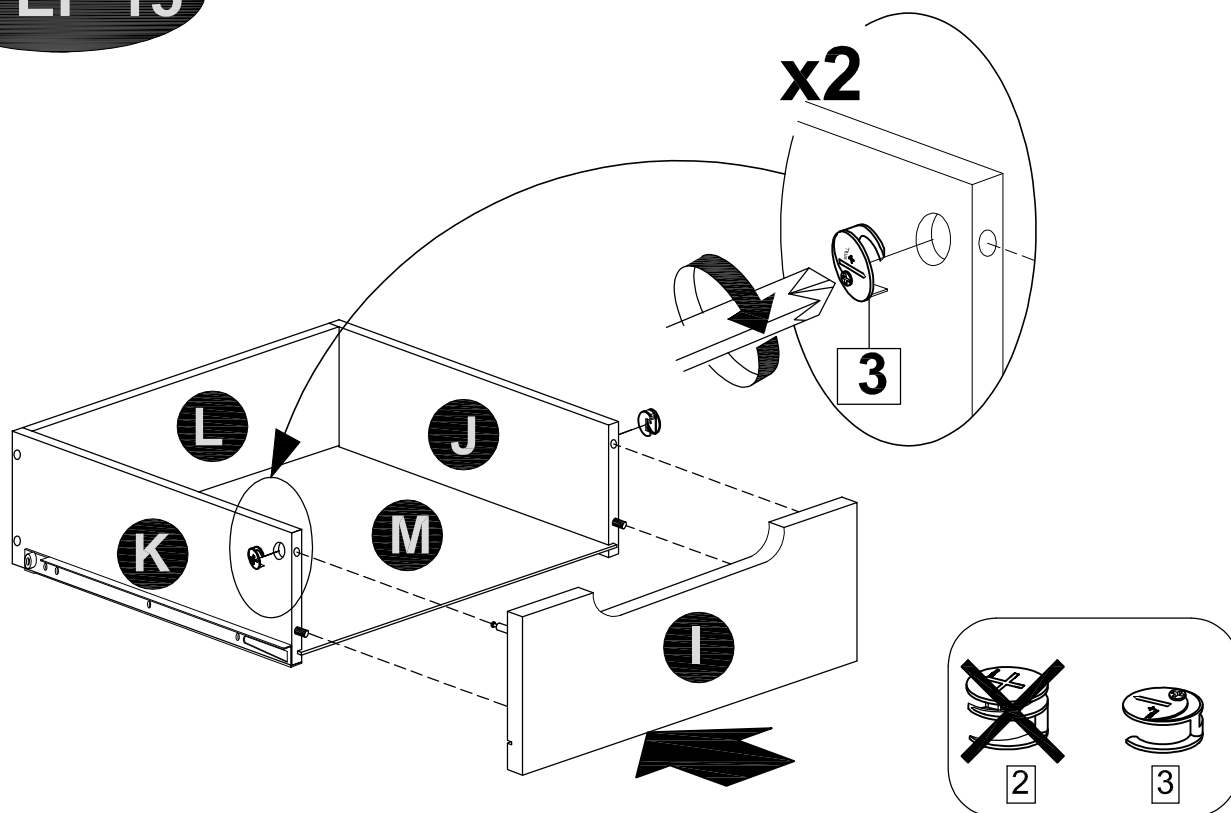
STEP 13



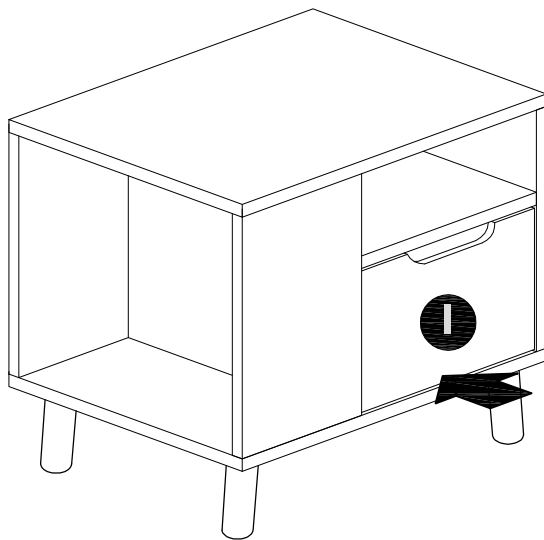
STEP 14



STEP 15



STEP 16



STEP 17

