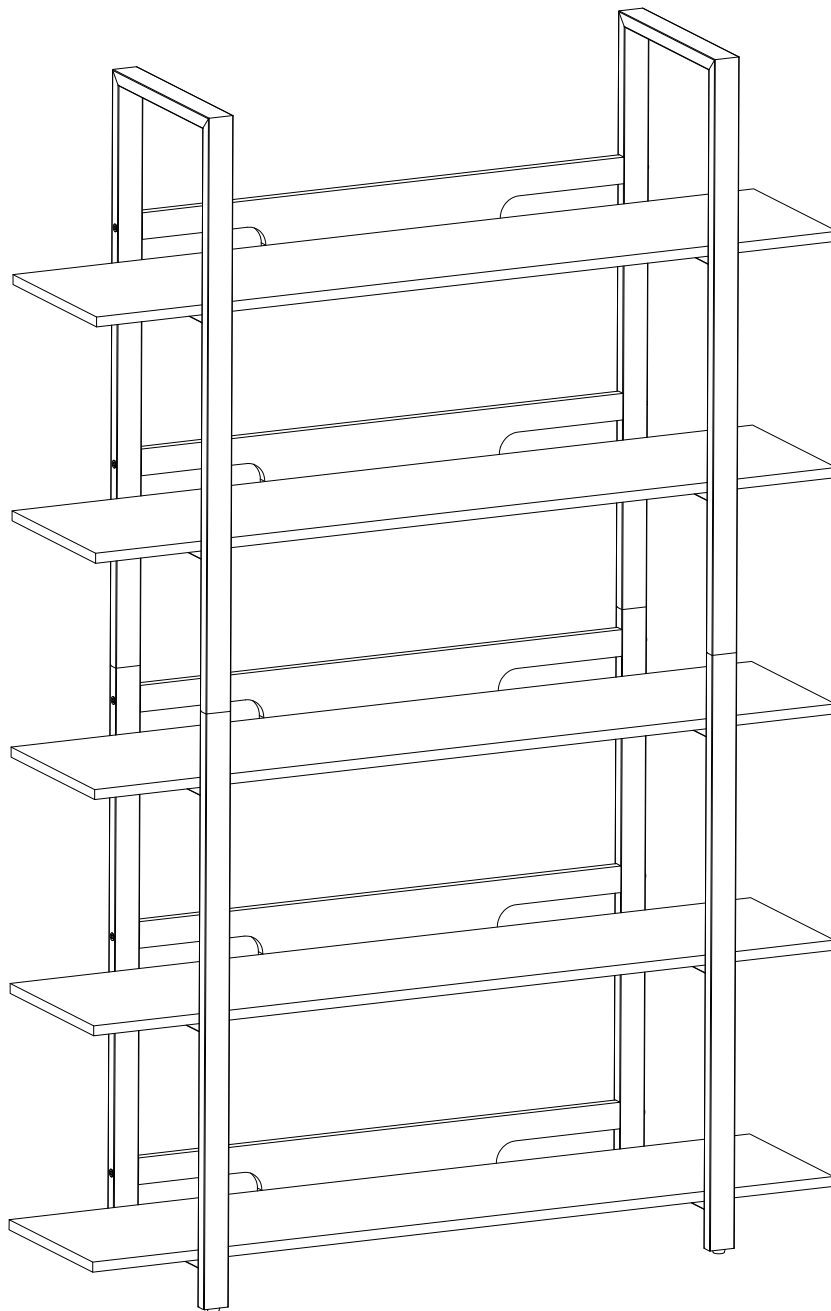
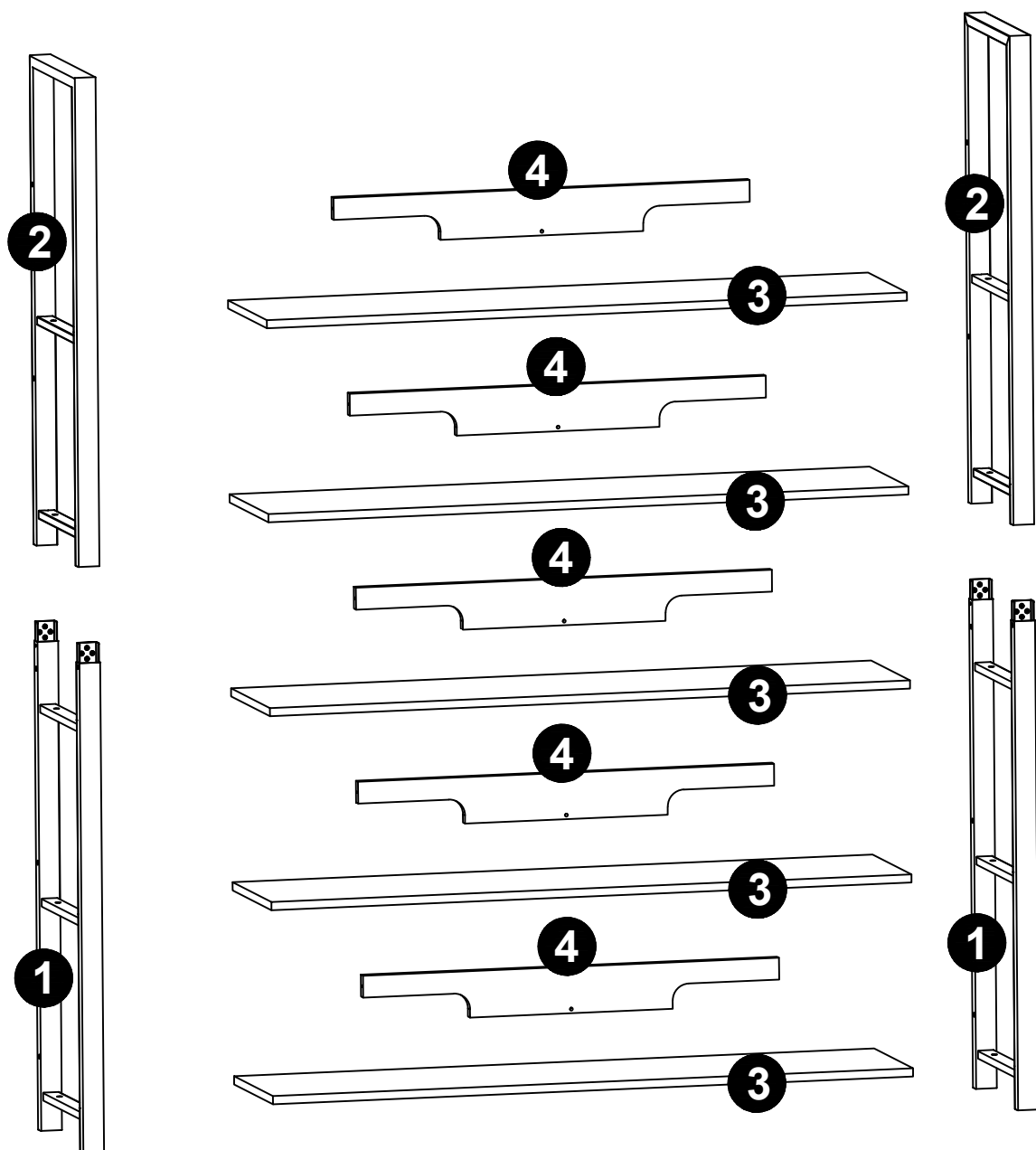


Installation Instruction

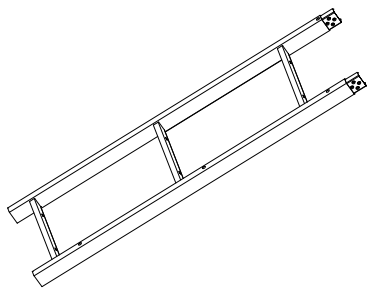


Please don't tighten the screws completely and go back later for a final tightening of all the screws after pieces are aligned with each other.

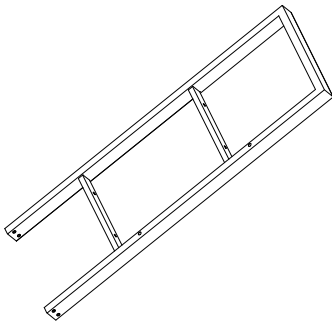




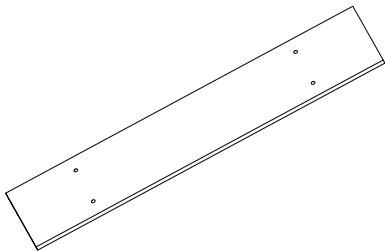
HARDWARE LIST



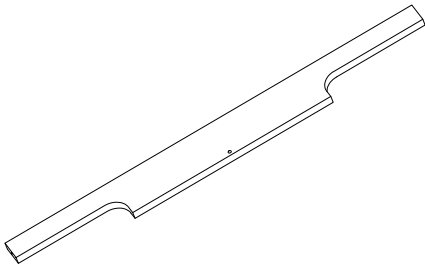
①x2PC



②x 2PC

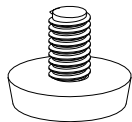


③x 5PC

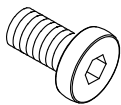


④x 5PC

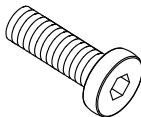
PARTA LIST



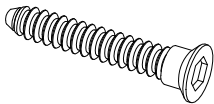
M8
Ax4PCS



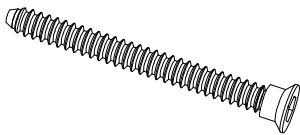
M6*12mm
Bx8 +1PCS



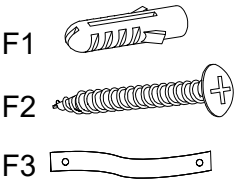
M6*25mm
Cx20+1PCS



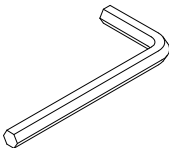
M7*38mm
Dx5PCS



M7*68mm
Ex10+1PCS

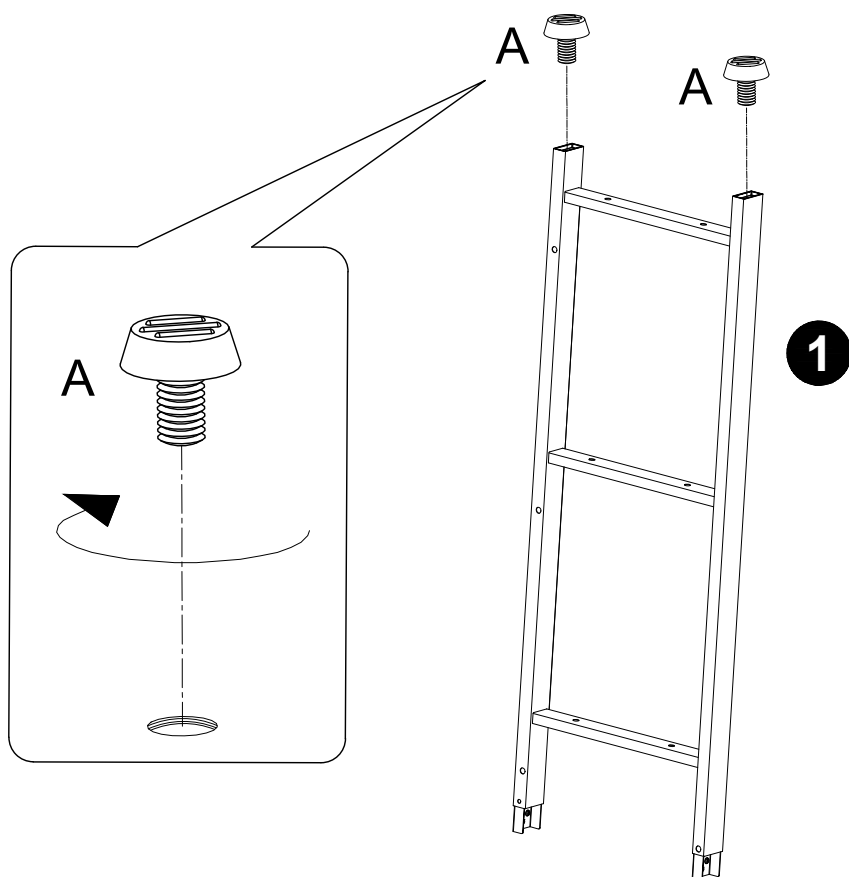
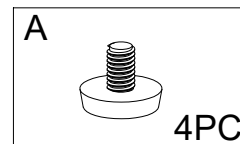


Fx2PCS



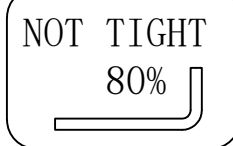
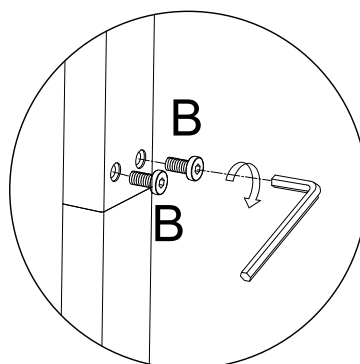
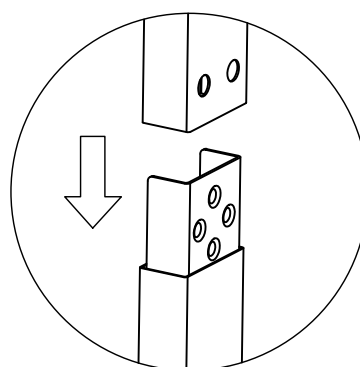
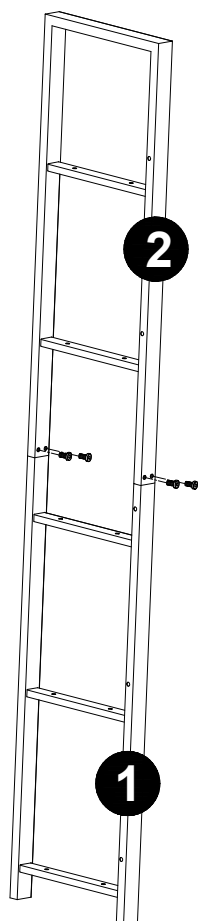
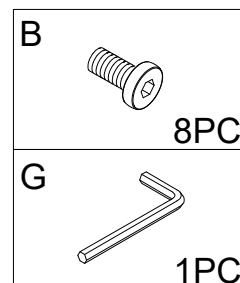
M4
Gx1PCS

1



X2

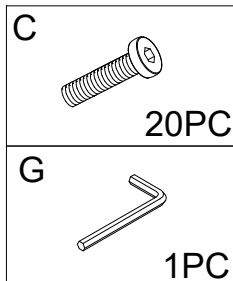
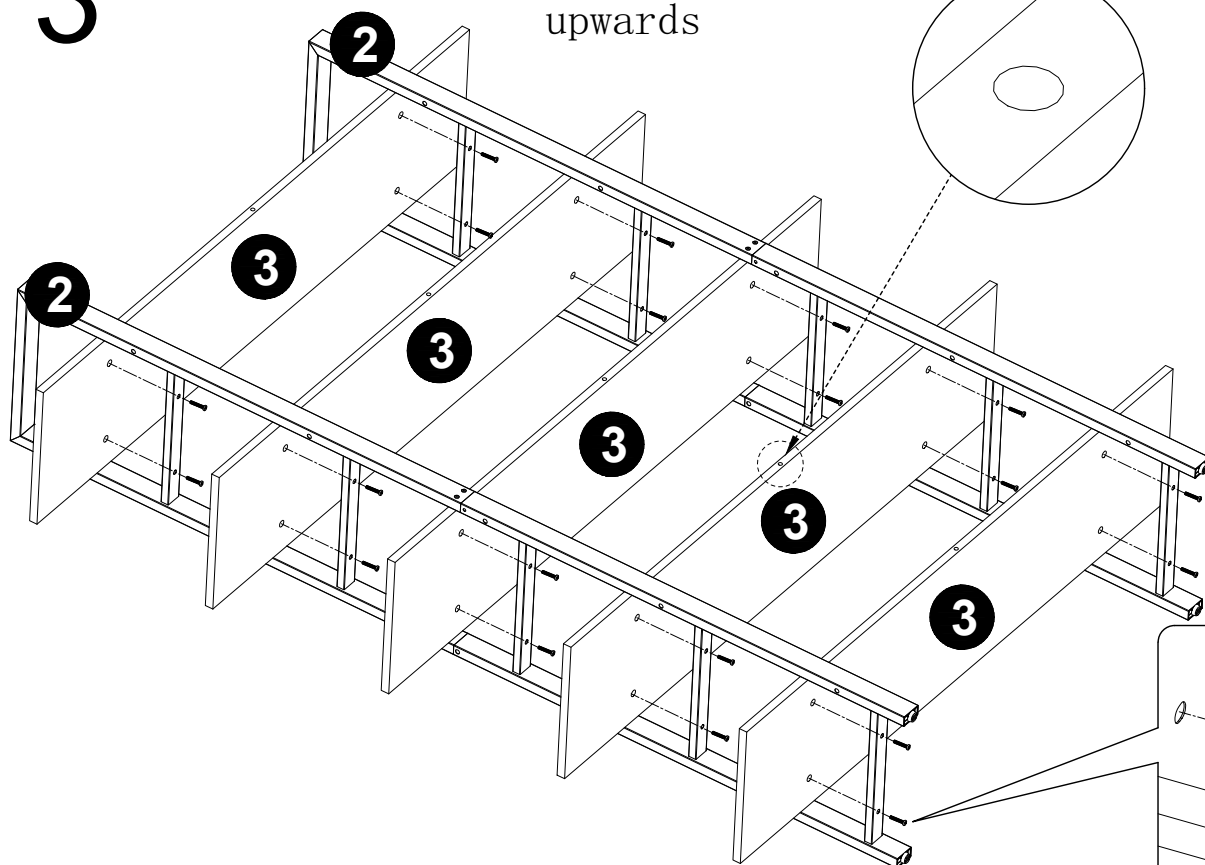
2



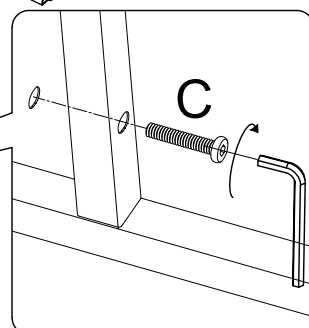
X2

3

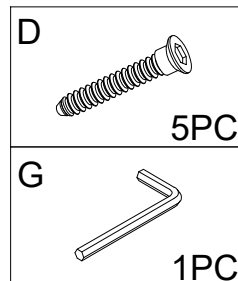
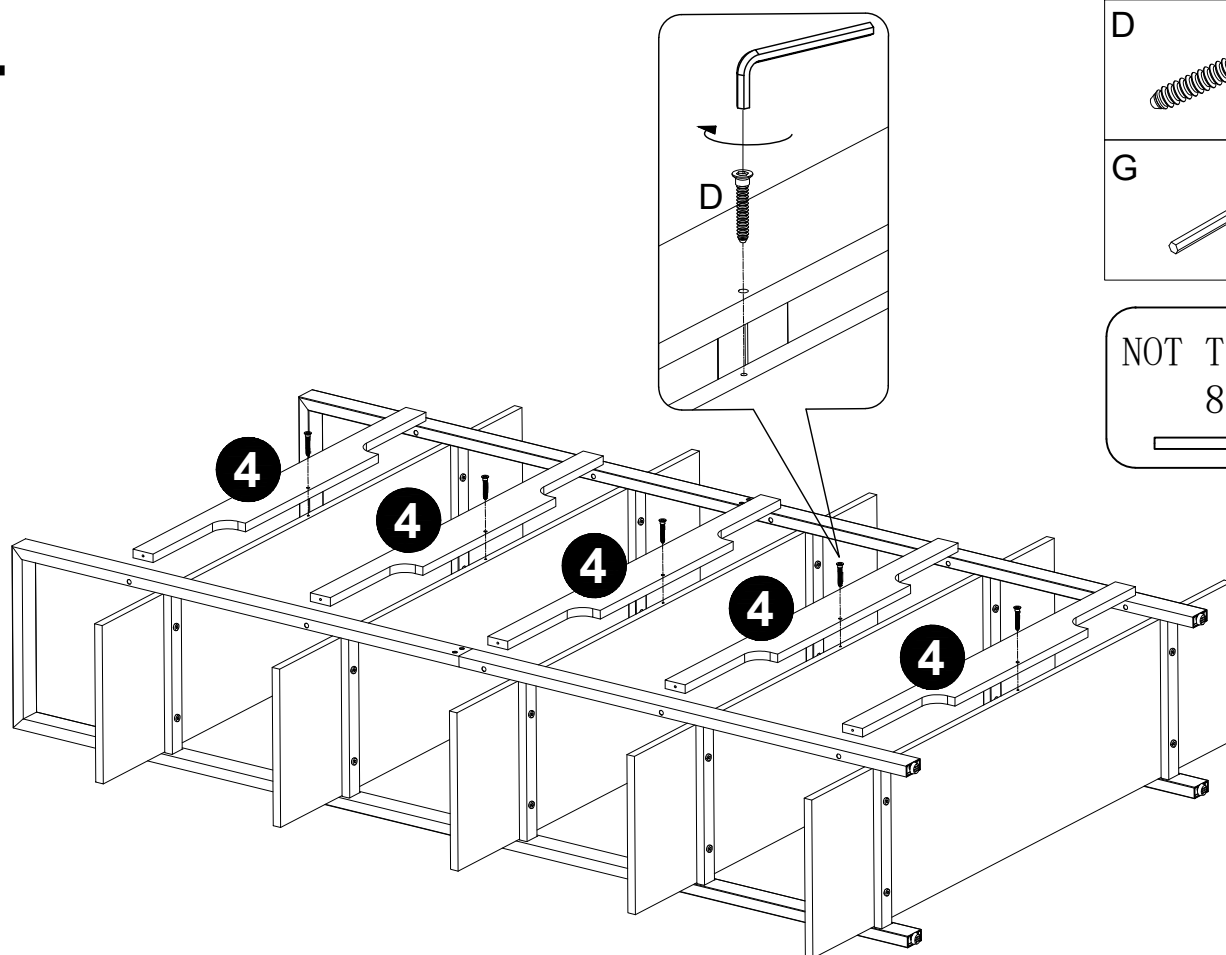
The hole facing upwards



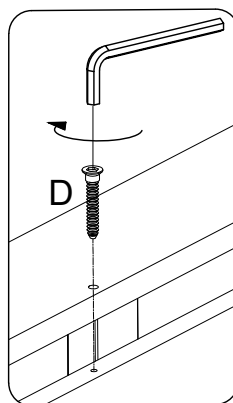
NOT TIGHT
80%



4

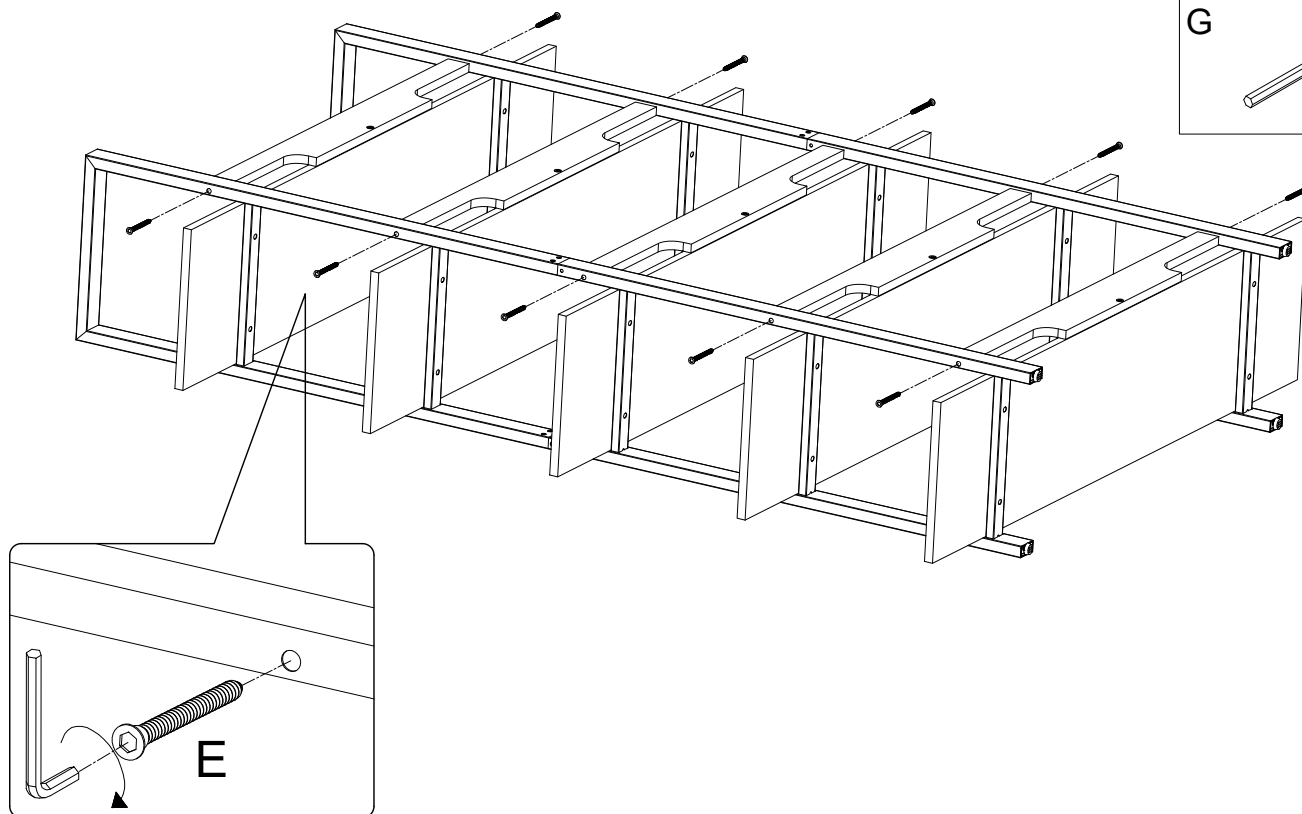
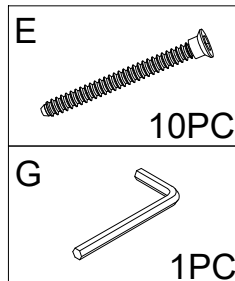


NOT TIGHT
80%



5

TIGHT ALL SCREW 100%



6

