

ASSEMBLY INSTRUCTION

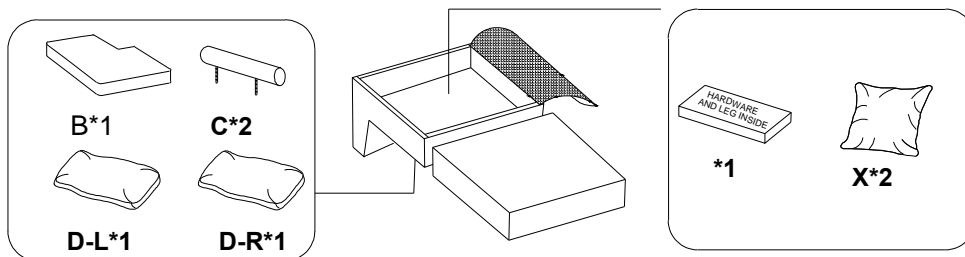
Reversible Chaise w/ 2 Pillows

Legs and hardware are stored in the box, please take out for assembly.

NOTE: Do not use power tools for assembly. Power tools increase the risk of over tightening which lead to splitting or cracking the wood.

CHAIR COMPONENT LIST

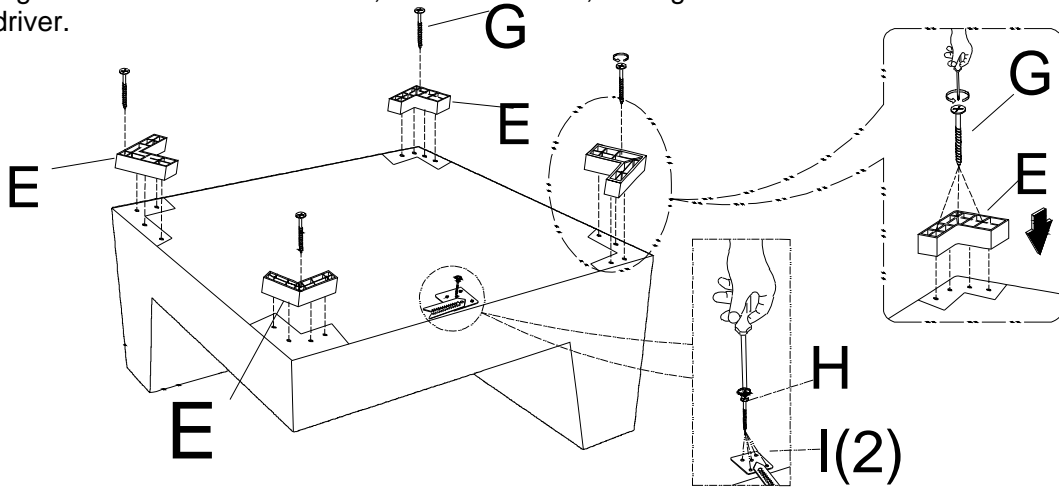
NO	DRAWING	QTY	DESCRIPTION
A		1	SEAT
B		1	SEAT CUSHION
C		2	HEADREST
D-L		1	L LSF BACK CUSHION
D-R		1	R RSF BACK CUSHION
E		8	PLASTIC LEG
F		4	CONNECTOR
G		32	SCREW #4X45MM
X		2	SQUARE PILLOW (DIM 21"x21")
Y		1	OTTOMAN
H		10	SCREW #4X25MM
I		2	ALLIGATOR INSERT



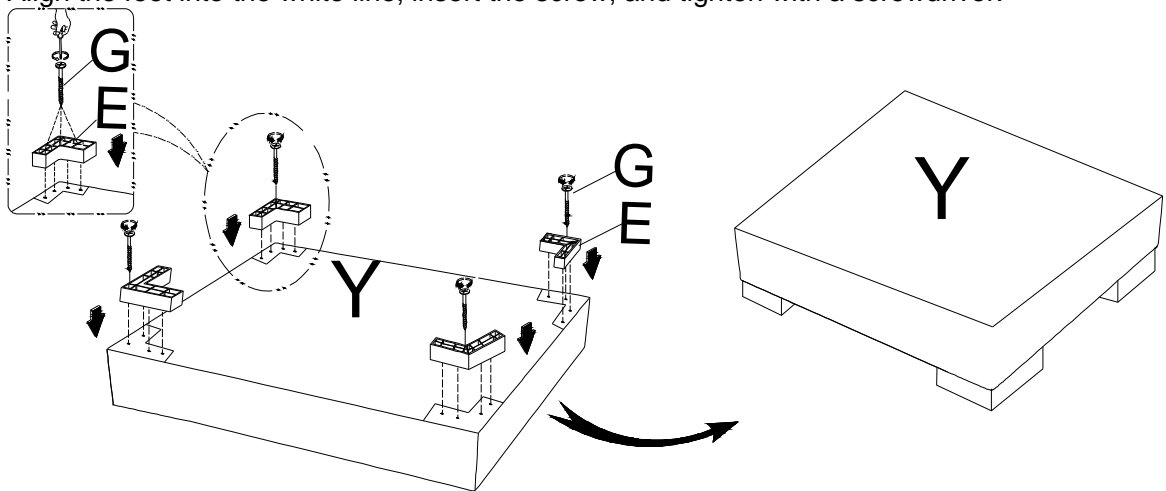
ASSEMBLY INSTRUCTION

Reversible Chaise w/ 2 Pillows

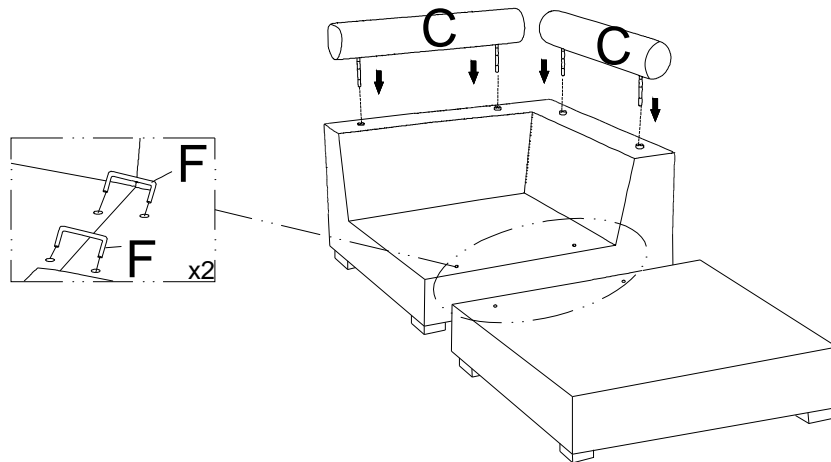
Step 1 Align the feet into the white line, insert the screw, and tighten with a screwdriver.



Step 2 Align the feet into the white line, insert the screw, and tighten with a screwdriver.

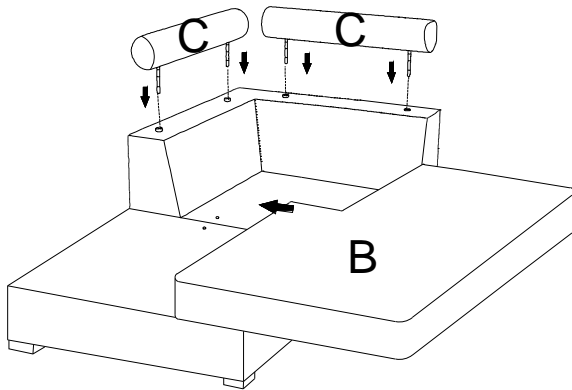


Step 3

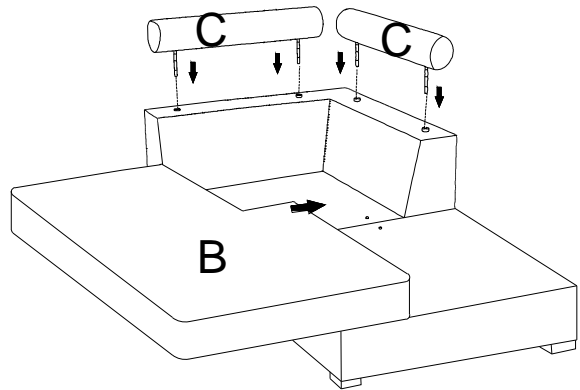


ASSEMBLY INSTRUCTION

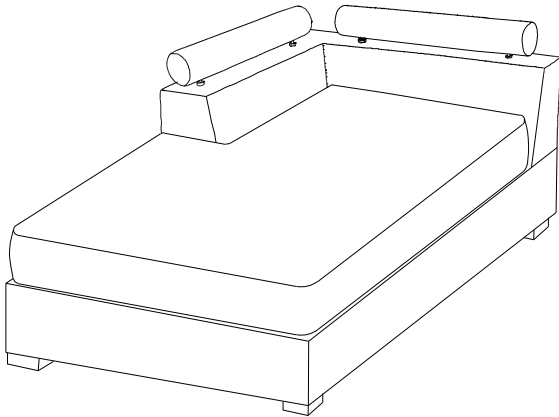
Step 4-L



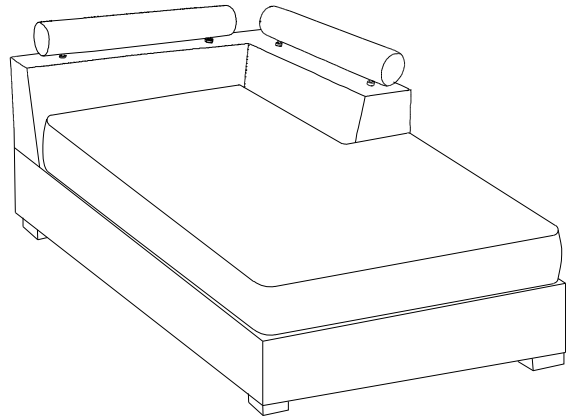
Step 4-R



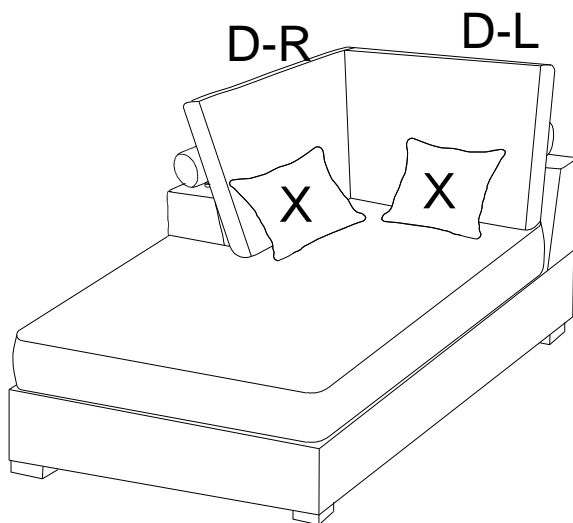
Step 5-L



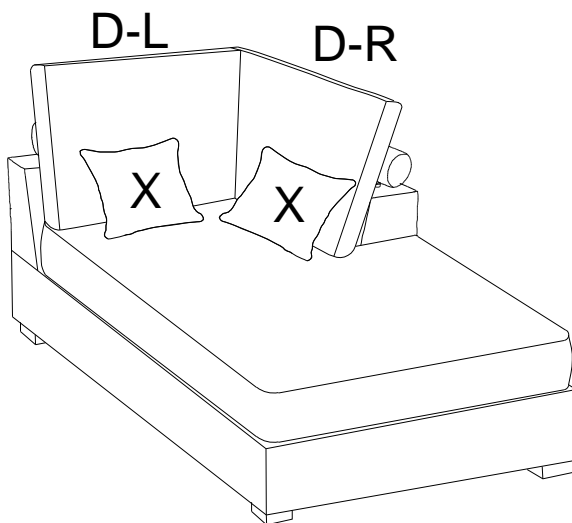
Step 5-R



Step 6-L



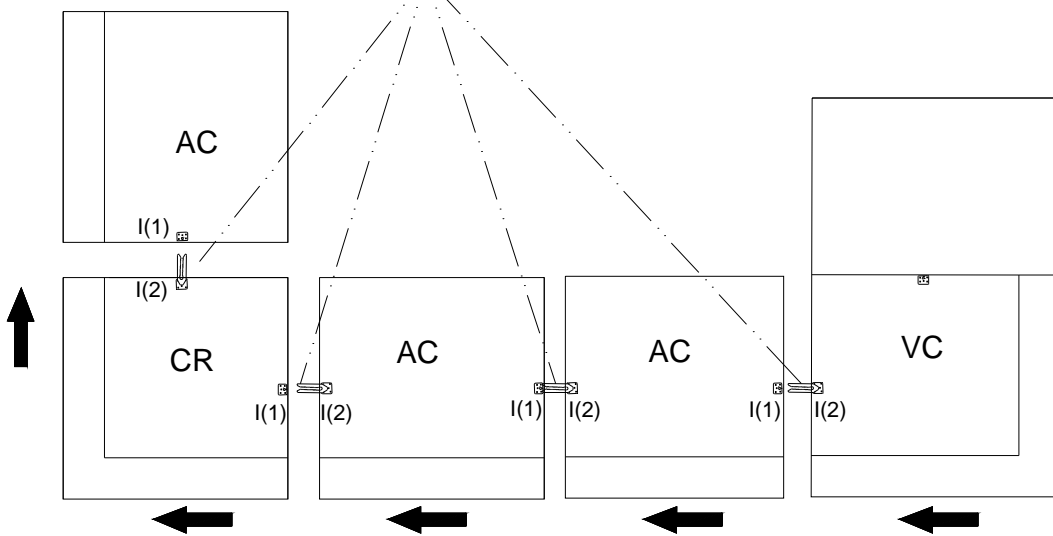
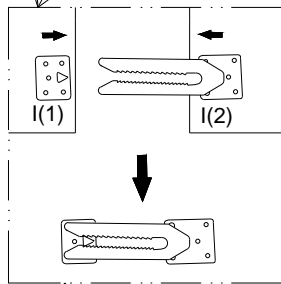
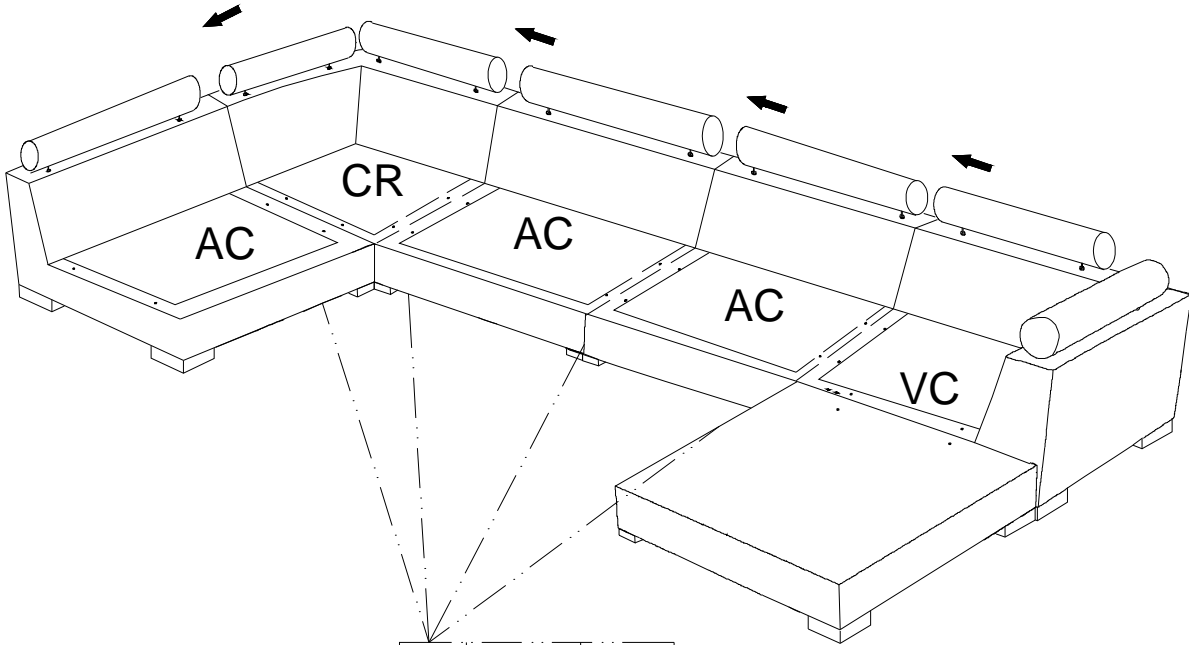
Step 6-R



ASSEMBLY INSTRUCTION

Reversible Chaise w/ 2 Pillows

STEP 1-R

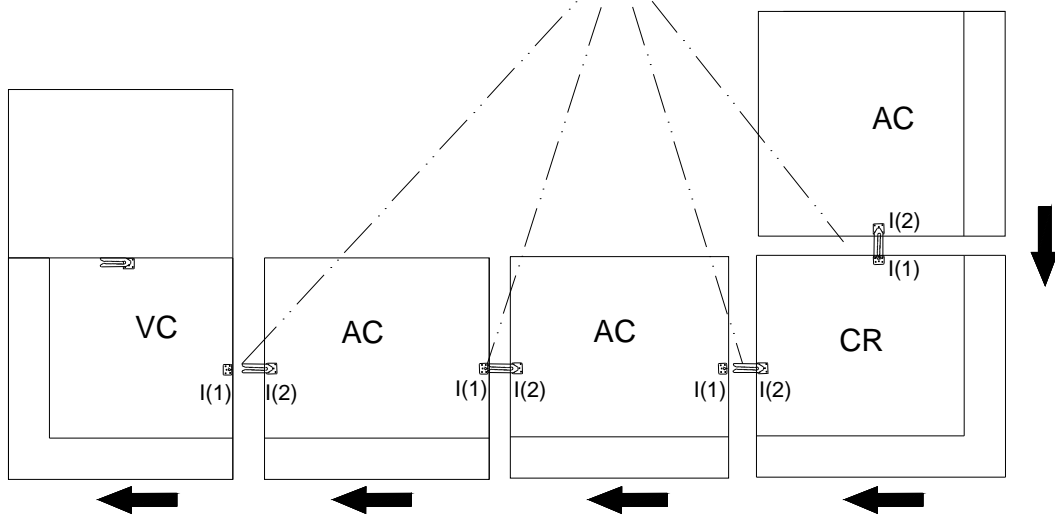
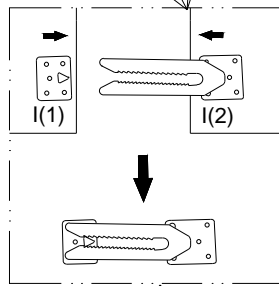
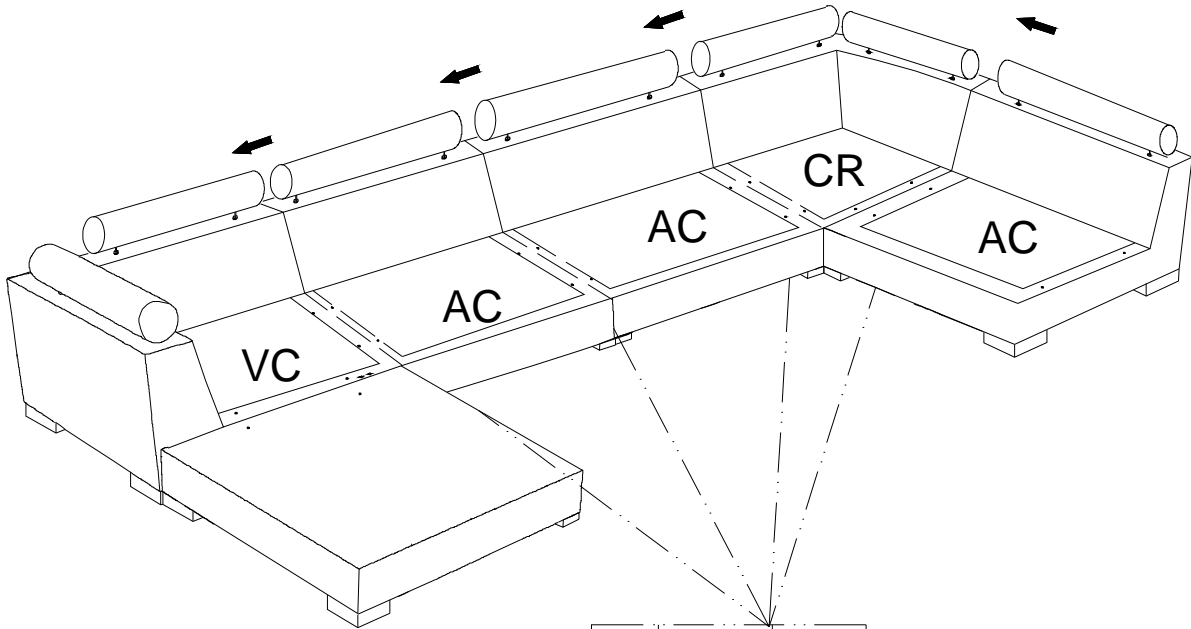


BOTTOM VIEW

ASSEMBLY INSTRUCTION

Reversible Chaise w/ 2 Pillows

STEP 1-L

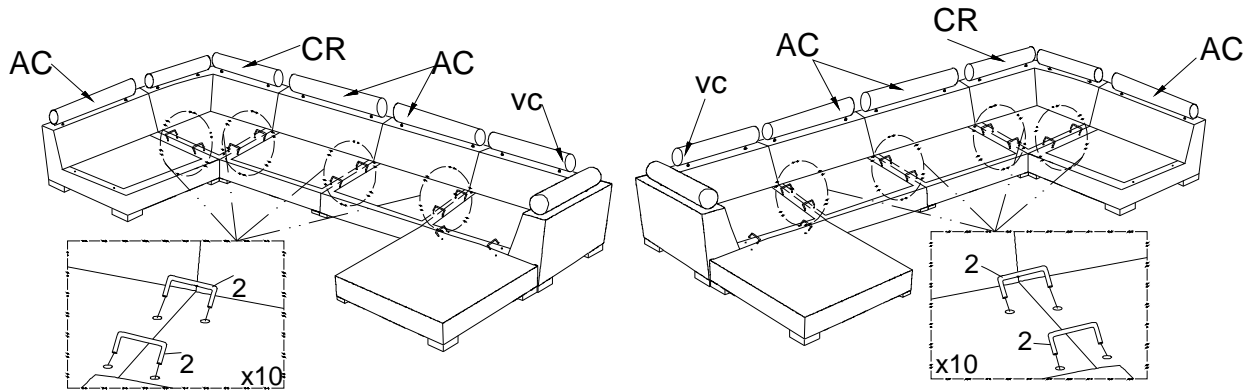


BOTTOM VIEW

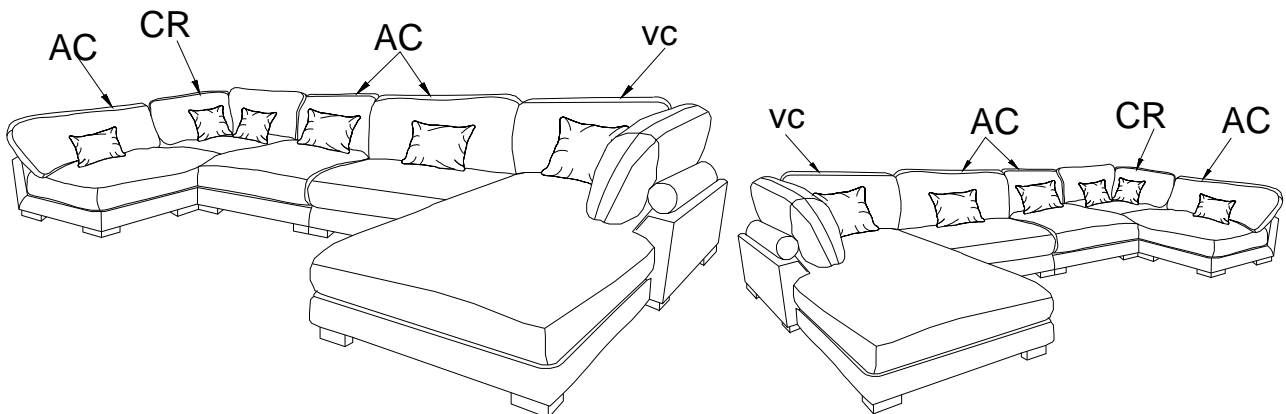
ASSEMBLY INSTRUCTION

Reversible Chaise w/ 2 Pillows

STEP 2



STEP 3



Care Instructions for Corduroy Furniture:

In order to maintain the original appearance of your Corduroy furniture, please follow below simple care procedures:

Avoid exposing furniture directly to sunlight or heating and air conditioning outlets. Sunlight and/ or exposure to heating and air conditioning outlets will fade/damage Corduroy.

Vacuum or wipe with a soft cloth to remove dust.

Hardware may loosen over time. Periodically check to make sure all connections are tight, Re-tighten if necessary.

For item use on wooden floor, hard surfaces or carpets, it is recommended to install protective pads under all legs and supports to avoid/prevent from damages/scratches and discoloration.

