

## INSTRUCTIONS

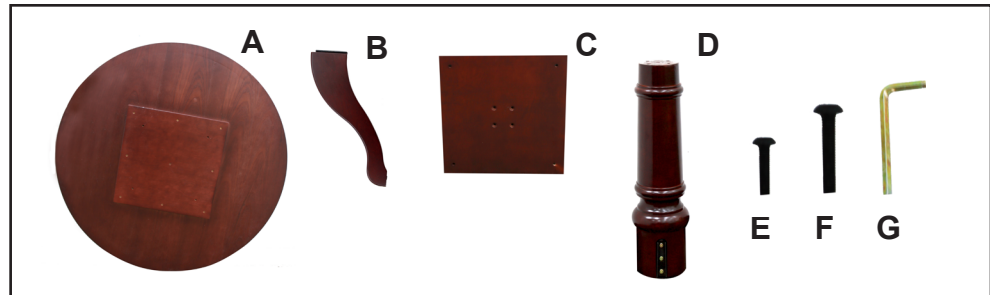
### Organize your parts and hardware.

Wooden componenets should include:

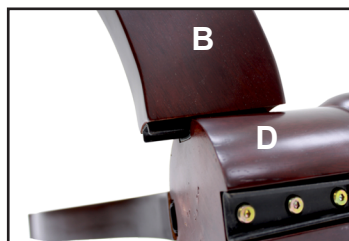
**A) 1 Top B) 4 Legs**  
**C) 1 Square D) 1 Stem**

Hardware includes:

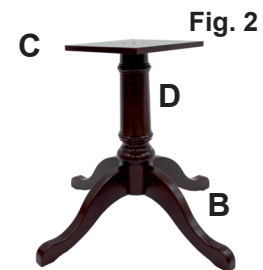
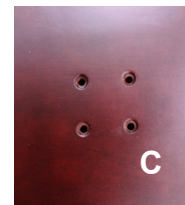
**E) 4 Small Bolts F) 4 Large Bolts**  
**G) 1 Allen Wrench**



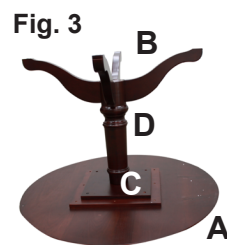
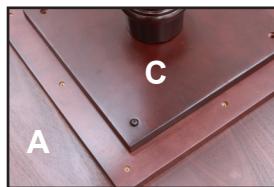
**Step 1:** Slide metal leg connceter (B) into metal grooves located on the stem (D).  
*See figure 1 to the right.*



**Step 2:** Align square (C) drilled holes with holes drilled in top of stem (D). Insert 4 small bolts (E) into holes and tighten using allen wrench (G).



**Step 3:** Flip over **Fig. 2** and align holes in (C) with drilled holes in top (A) *see figure 3*. Insert 4 large bolts (F) into holes on (C) and tighten using allen wrench (G).



**Step 4:** Place table upright.



### IMPORTANT NOTICE:

- Place all wooden parts on a clean and smooth surface such as a rug or carpet to avoid the parts from being scratched.
- Check to be sure that you have all parts and hardware.
- Remove all wrapping materials, including staples & packing straps before you start to assemble.
- Do not tighten all screws/bolts until completely assembled.
- Keep all hardware parts out of reach of children.

Any problems or questions call us.