

GREYFIELD

THERMOSTATIC SHOWER VALVE AND VOLUME CONTROL HANDLE

SKU: 948806



FEATURES

- Material: Brass
- Handle Type: Lever
- Features: Thermostatic
- Assembly Required: No
- Installation Type: Wall Mount
- Metal Handles
- Mounting Hardware Included: Yes
- Wall Thickness Range: 1" to 1-3/4"
- Recommended Valve Installation Depth: 1-5/8" to 2-3/8"
- Temperature Outlet Factory Preset to 104 Degrees Fahrenheit
- Temperature Can Be Easily Adjusted Up and Down to User's Comfort Level
- Scald Guard Protection
- High Temperature Limit Stop
- Thermostatic Technology Keeps Shower Temperature Within 1 Degree Celsius
- Optional Rough-in Valve

SIGNATURE HARDWARE Lifetime Warranty

See website for detailed warranty information.

CONTENTS

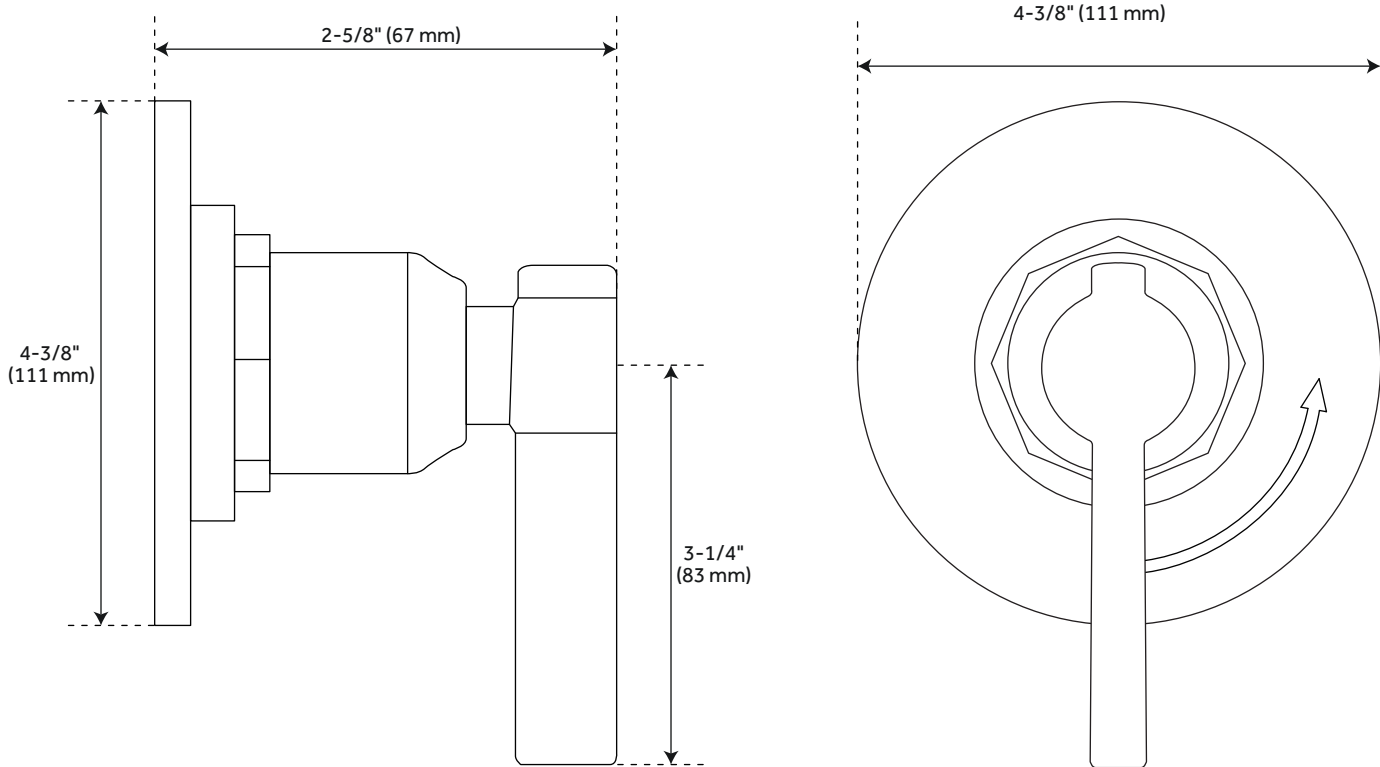
TRIM KIT	PAGE 2
VOLUME CONTROL	PAGE 3
THERMOSTATIC VALVE	PAGE 4
VOLUME-CONTROL VALVE	PAGE 5

REVISED 01/21/2020

GREYFIELD

IN-WALL SHOWER VOLUME CONTROL HANDLE

SKU: 948806



FEATURES

Diameter: 4-3/8"
Depth: 2-5/8"

CODES/STANDARDS

cUPC
ASME A112.18.1/CSA B125.1
ICC/ANSI A117.1 (when installed according
to ADA standards)
Massachusetts Accepted

SIGNATURE HARDWARE LIFETIME WARRANTY

See website for warranty information



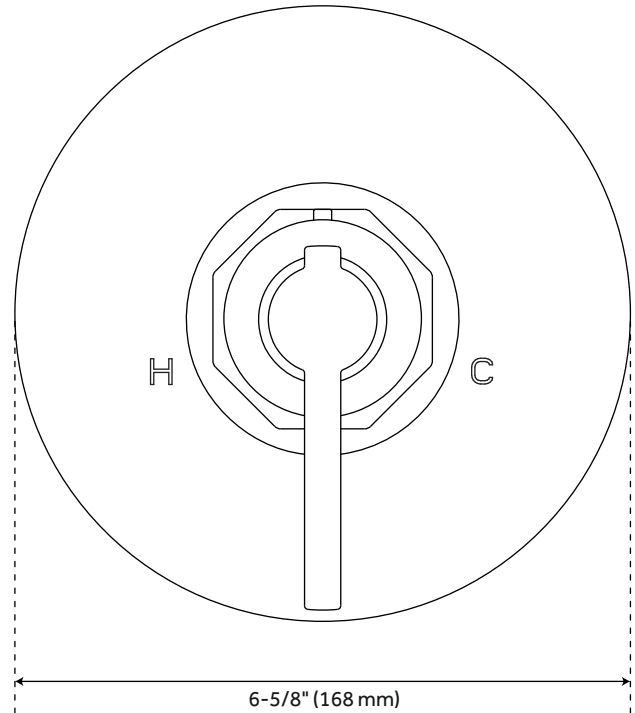
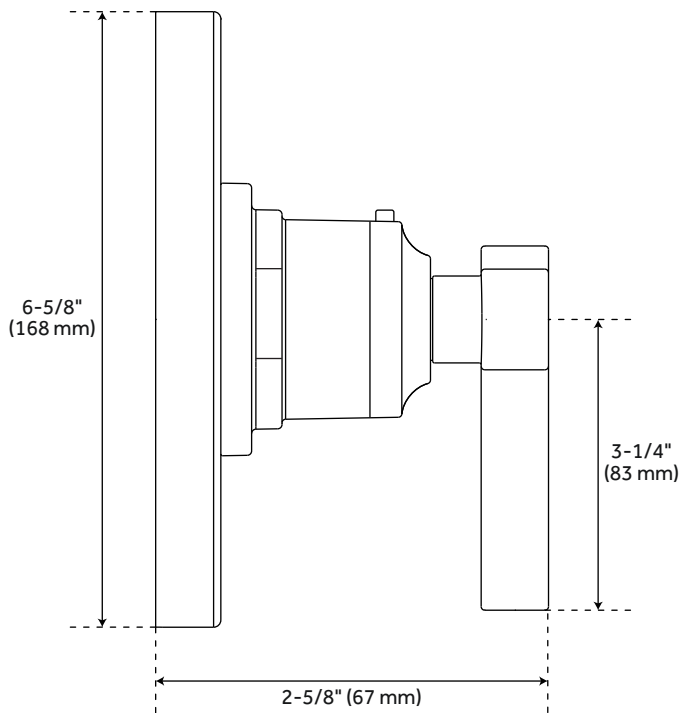
All dimensions and specifications are nominal and may vary. Use actual products for accuracy in critical situations.

PAGE 2
Code: SHGF9007CP/SHGF9007BN/SHGF9007PN

GREYFIELD

THERMOSTATIC SHOWER VALVE

SKU: 948806



FEATURES

Diameter: 6-5/8"
Depth: 2-5/8"

CODES/STANDARDS

cUPC
ASME A112.18.1/CSA B125.1
Massachusetts Accepted

SIGNATURE HARDWARE

LIFETIME WARRANTY

See website for warranty information



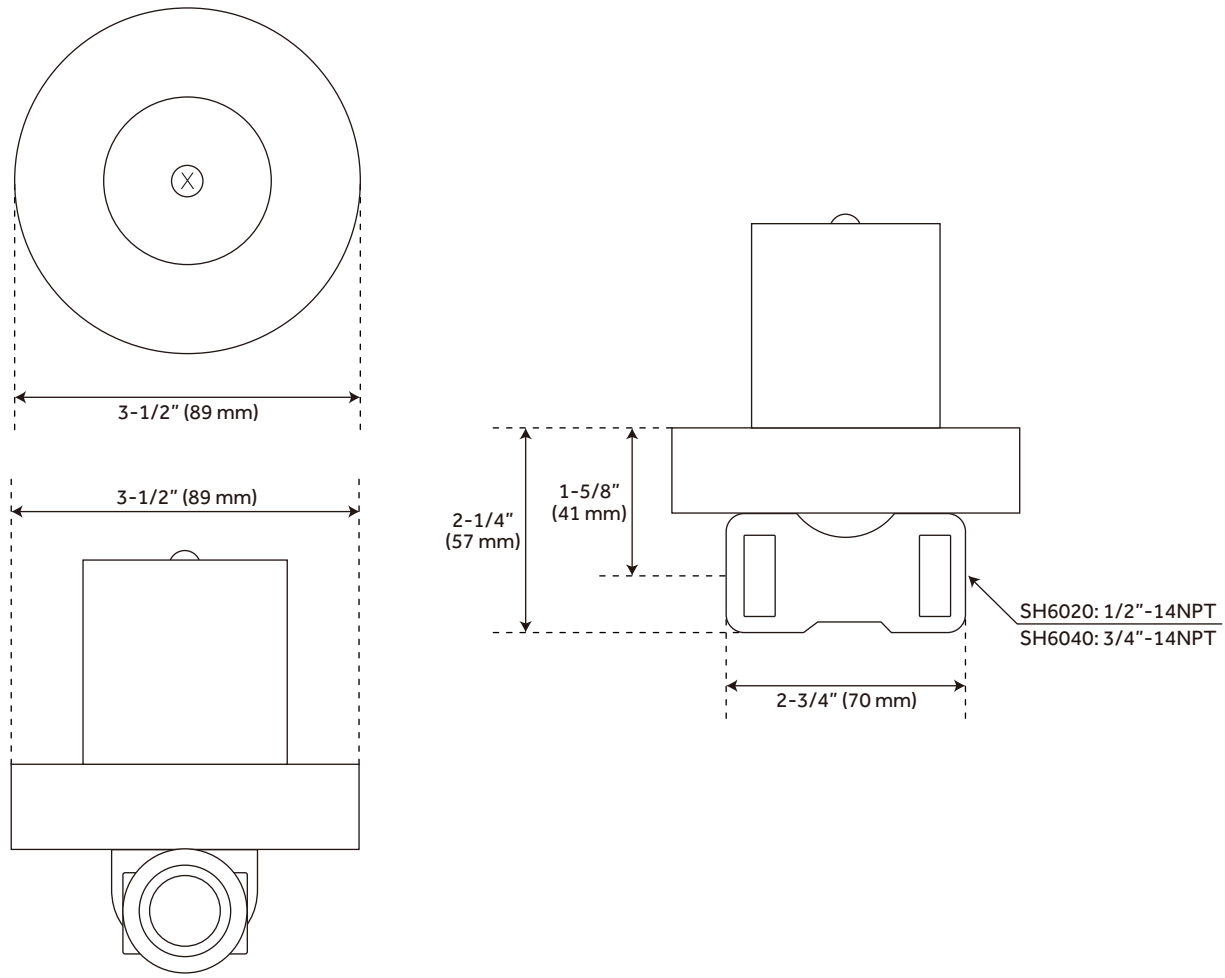
All dimensions and specifications are nominal and may vary. Use actual products for accuracy in critical situations.

PAGE 3
Code: SHGF9009BN/SHGF9009CP/SHGF9009PN

GREYFIELD

OPTIONAL VOLUME CONTROL VALVE WITH 1/2" -OR- 3/4" CONNECTION

SKU: 948806



FEATURES

- Brass Valve Body
- Ceramic Cartridge

CODES/STANDARDS

- cUPC
- ASME A112.18.1/CSA B125.1

SIGNATURE HARDWARE LIFETIME WARRANTY

See website for warranty information



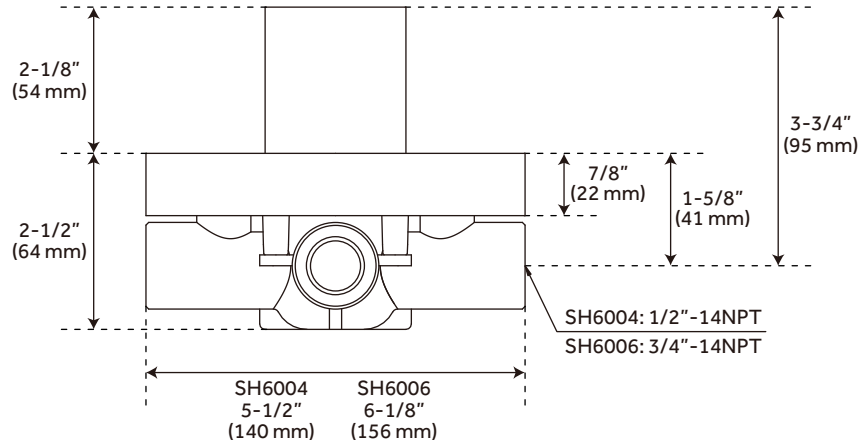
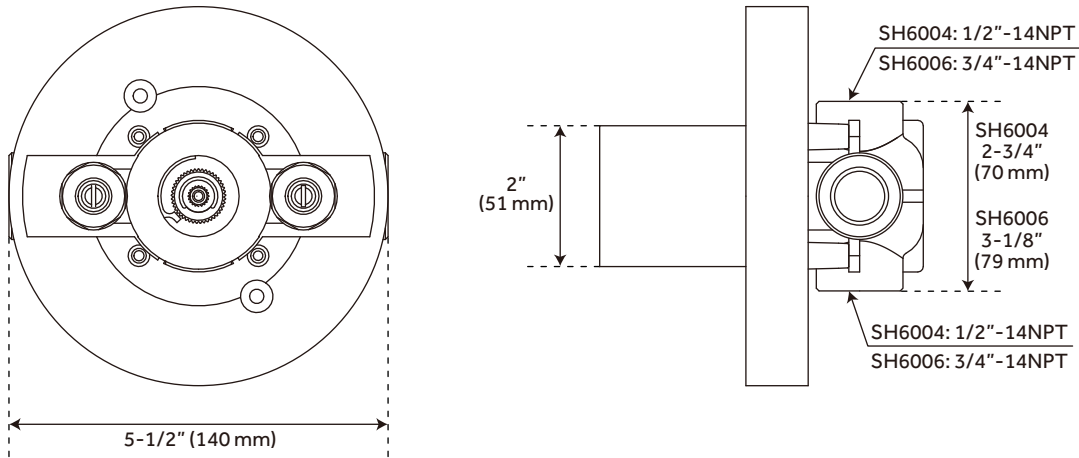
All dimensions and specifications are nominal and may vary. Use actual products for accuracy in critical situations.

PAGE 4
Code: SH6020/SH6040

GREYFIELD

OPTIONAL THERMOSTATIC VALVE WITH 1/2" -OR- 3/4" CONNECTION

SKU: 948806



FEATURES

- Bronze Valve Body
- Ceramic Cartridge
- Integral Water Stops and Check Valve
- Must Be Installed in Accordance With Provided Installation Instructions

CODES/STANDARDS

- cUPC
- ASME A112.18.1/CSA B125.1
- ASSE 1016 Type T

SIGNATURE HARDWARE

LIFETIME WARRANTY

See website for warranty information



All dimensions and specifications are nominal and may vary. Use actual products for accuracy in critical situations.

PAGE 5
Code: SH6004/SH6006