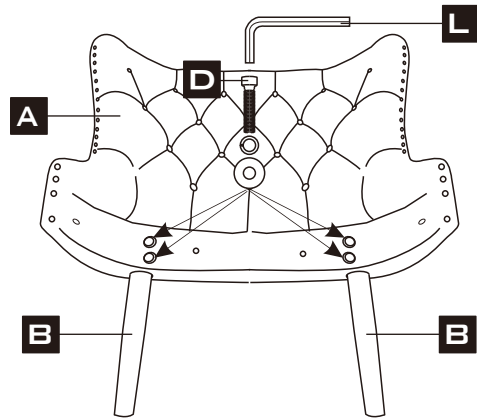
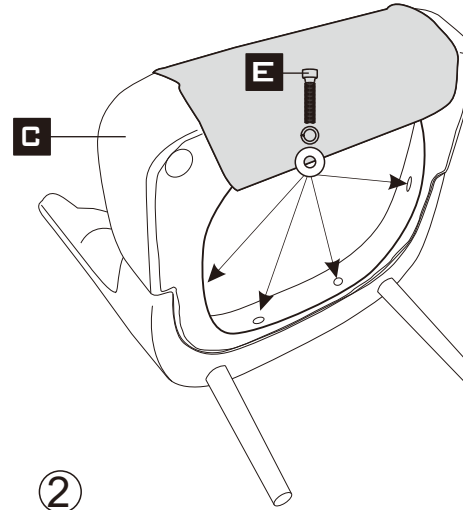


ASSEMBLING INSTRUCTION



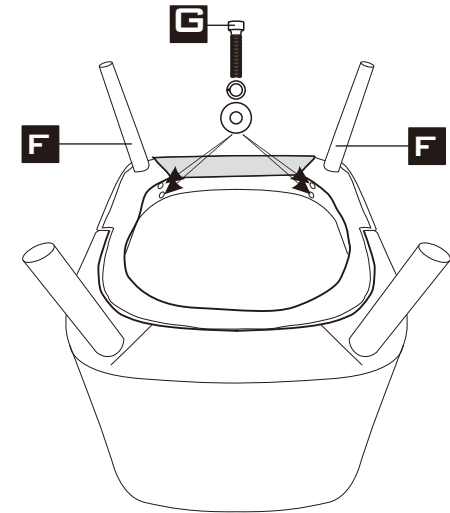
①

Put the screws in the holes, tight the screws, 100% is ok



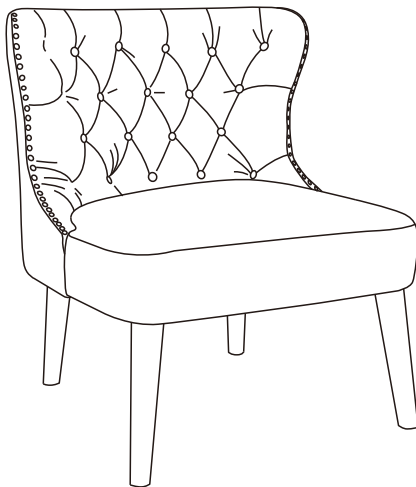
②

Put the screws in the holes, tight the screws, but not too tight, 90% is ok



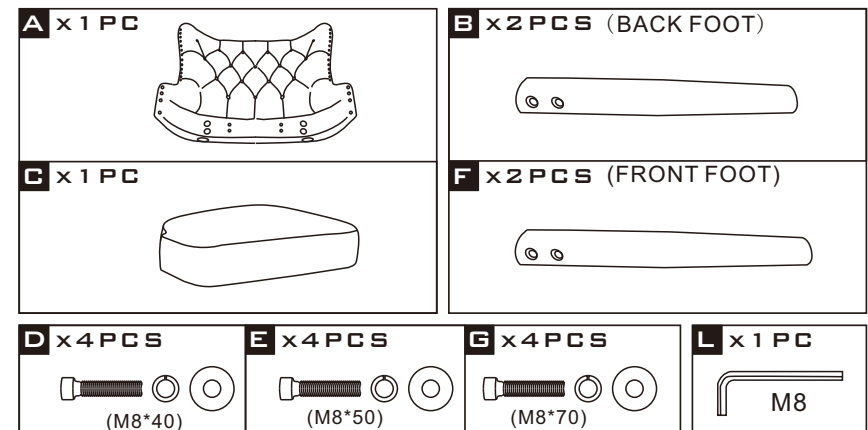
③

Put the screws in the holes, tight the screws, but not too tight, 90% is ok



④

Stand the chair upright & ensure it is level before tightening all screws. Then tight all the screws to 100% Then Stick the black part on the seat



Please find hardware pack inside the dust cover underneath seat cushion