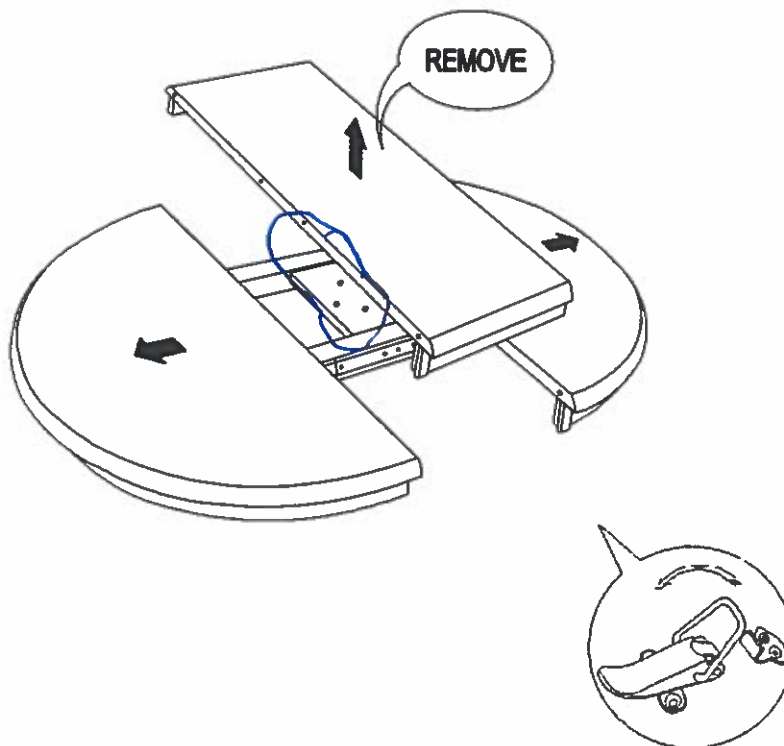


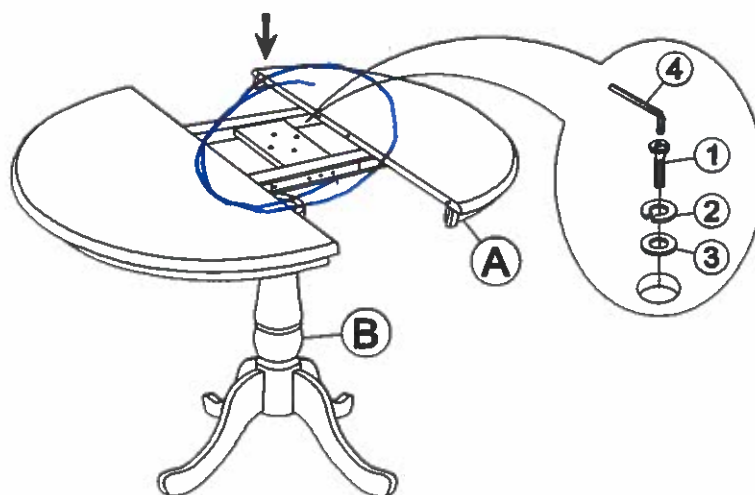
## STEP 1

Unlock the table top on both sides from underneath the top. Pull the 2 parts of the table top apart and remove the leaf as shown below.



## STEP 2

Attach Top (A) to the Base (B) by using bolts (1), and washers (2) and (3) as shown below. Tighten with Allen key (4).



(PACKED IN SEPARATE BOX)

Printed in Vietnam