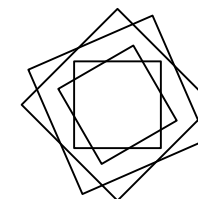
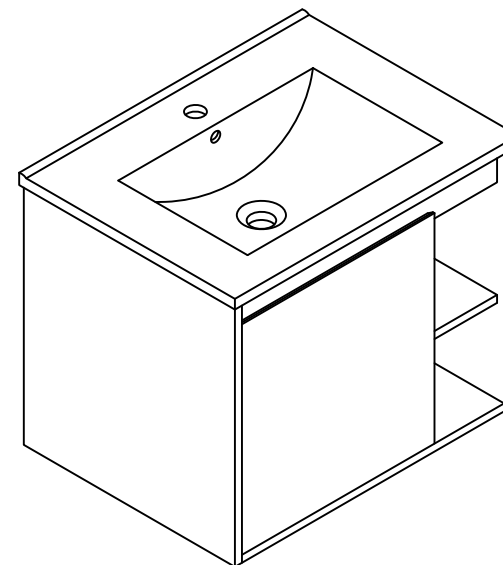


THANKS FOR WATCHING

Your feedback is invaluable to us and we would love to hear about your experience. Please take the time to leave us a review.


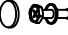
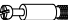










Thank you for shopping with us!

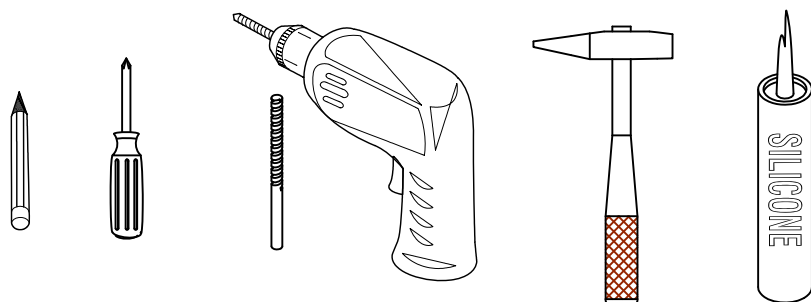
We encourage you to take a few minutes to go through this booklet. It contains important information on installation and care tips to keep your furniture looking as good as new.

Item NO.:BV B06424

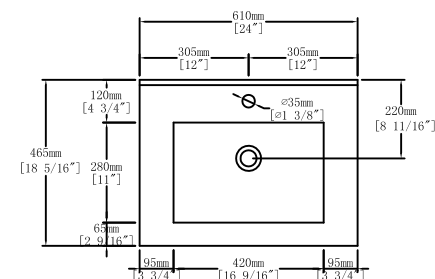
Hardware

NO.	Draw	QTY	NO.	Draw	QTY
A	 Screws Ø4x14mm	32	F	 Screws for fix on the wall	4
B	 Two-in-one connector	30	G	 Bracket (53x70x44mm)	2
C	 Two-in-one connector	30	H	 Bracket (19x19x35mm)	2
D	 Wood plug	7	I	 Hinges (Internal hiding)	2
E	 Plastic anchor(Ø10mm)	4	J	 Anti-collision gasket	1
			K	 Screwdriver	1

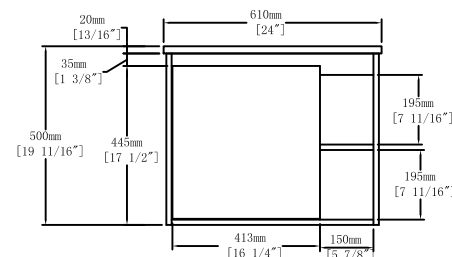
Recommended tools



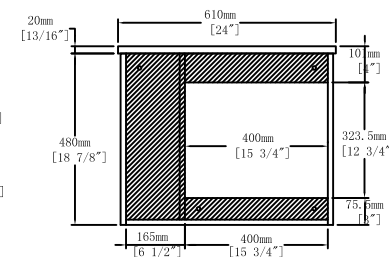
Dimensions



Top View



Front View

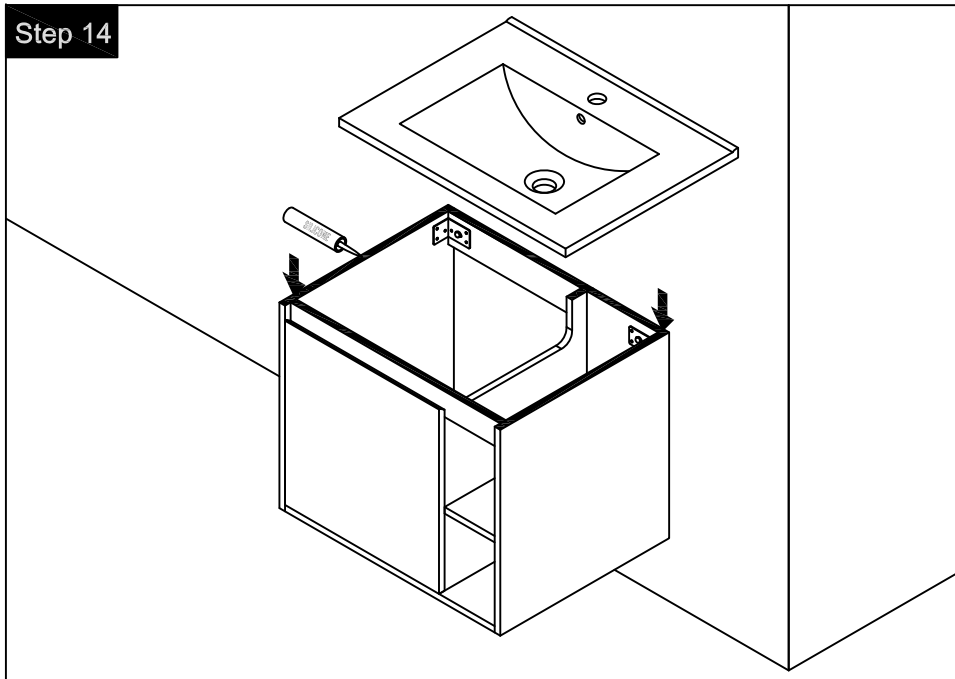


Back View

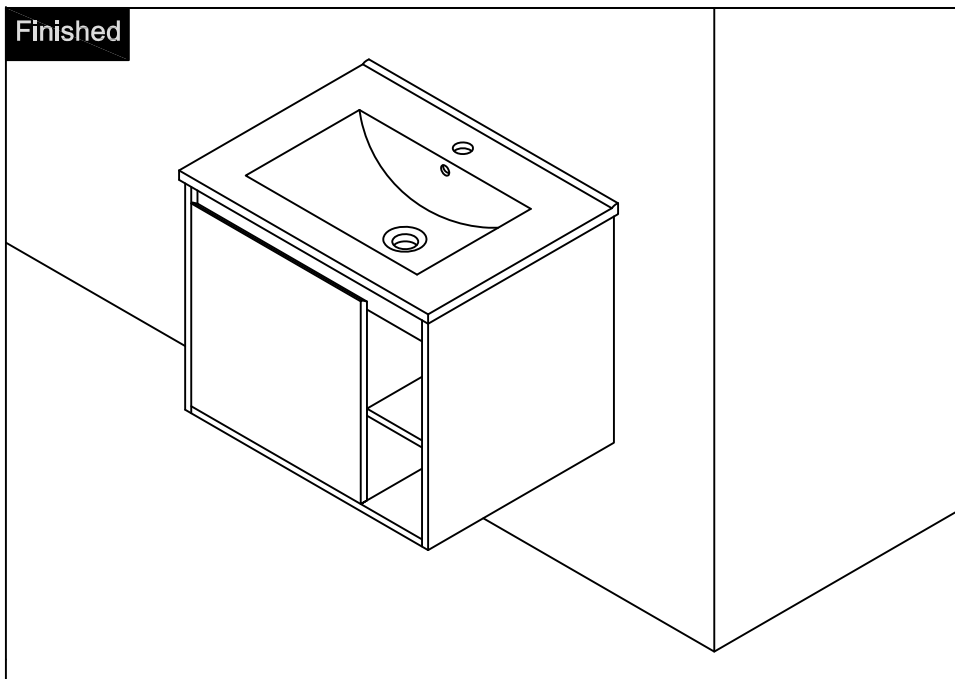
CARE CLEANING AND MAINTENANCE

- 1.Dust regularly with a soft , dry cloth.
- 2.Avoid the use of all chemicals household cleaners, abrasives, or cleaners that contain lemon, vinegar, or other acids that may damage the finish.
- 3.Excessive exposure to sunlight and extreme changes in temperature and moisture can damage wood furniture.
- 4.The sink top is resilient, but care needs to be taken to preserve its appearance.
- 5.Do not place hot appliances, such as curling irons and hot hair dryers directly on the countertop. Wipe spills immediately.

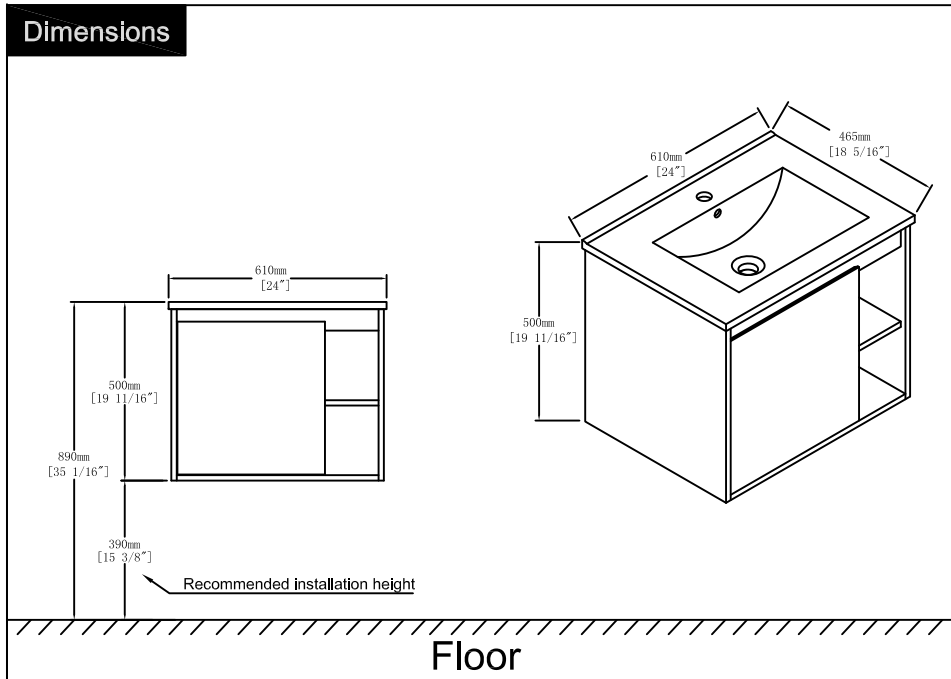
Step 14



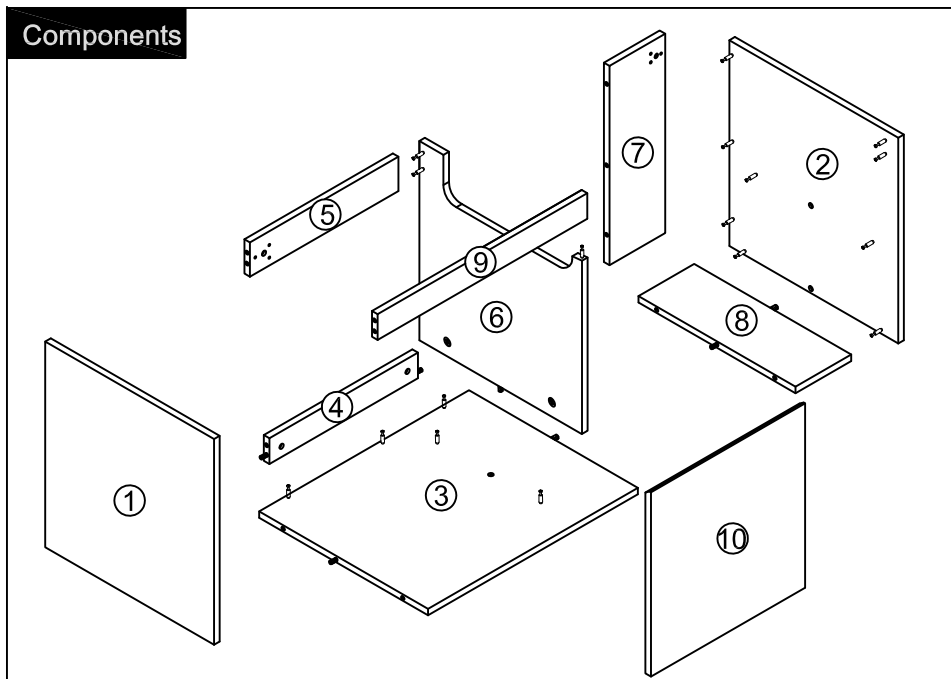
Finished



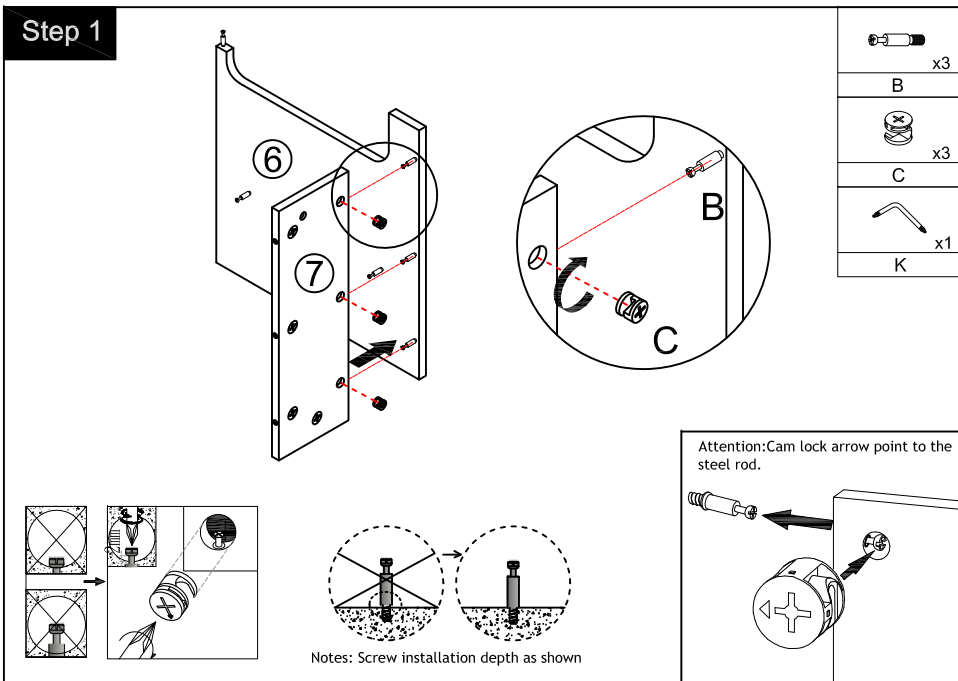
Dimensions



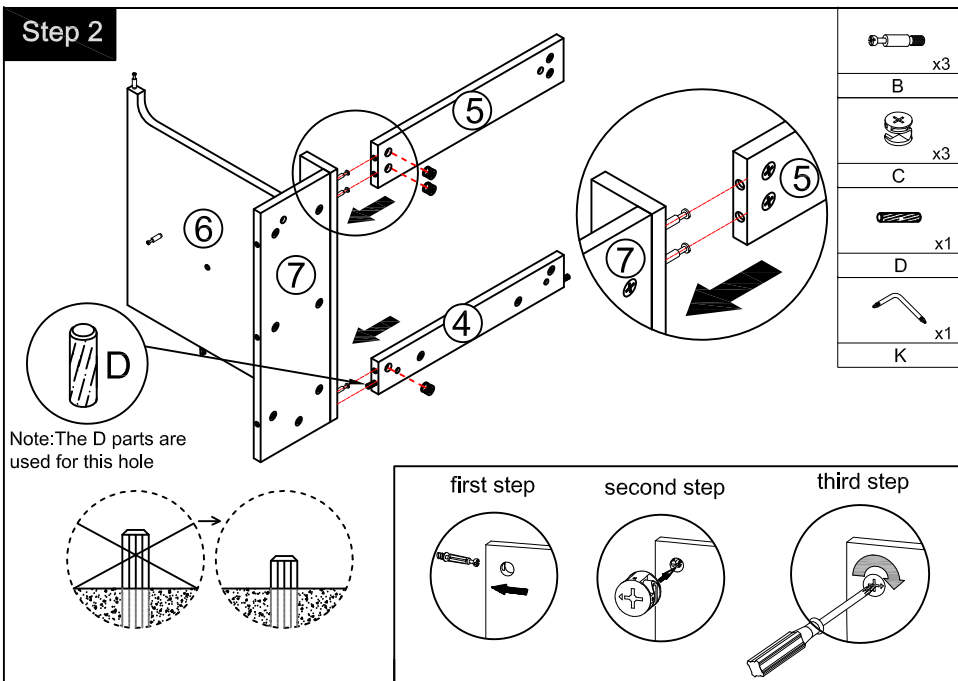
Components



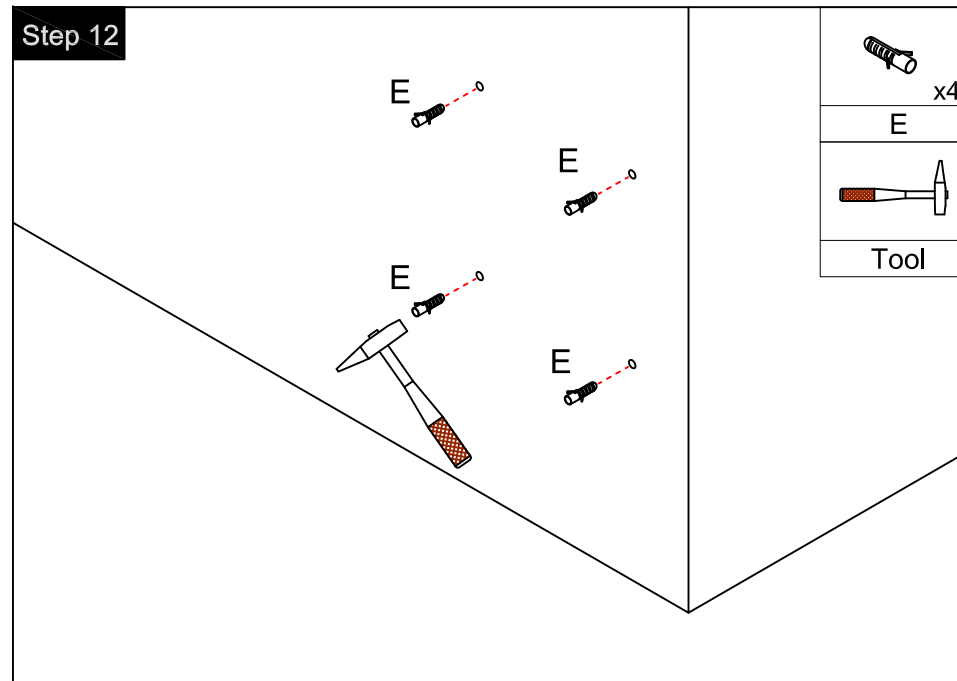
Step 1



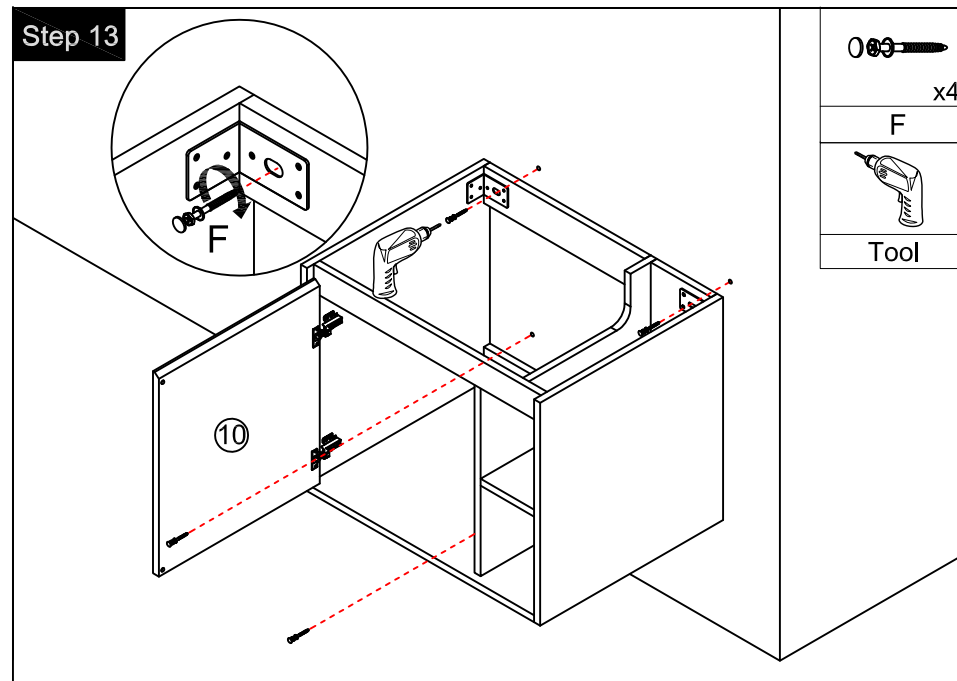
Step 2



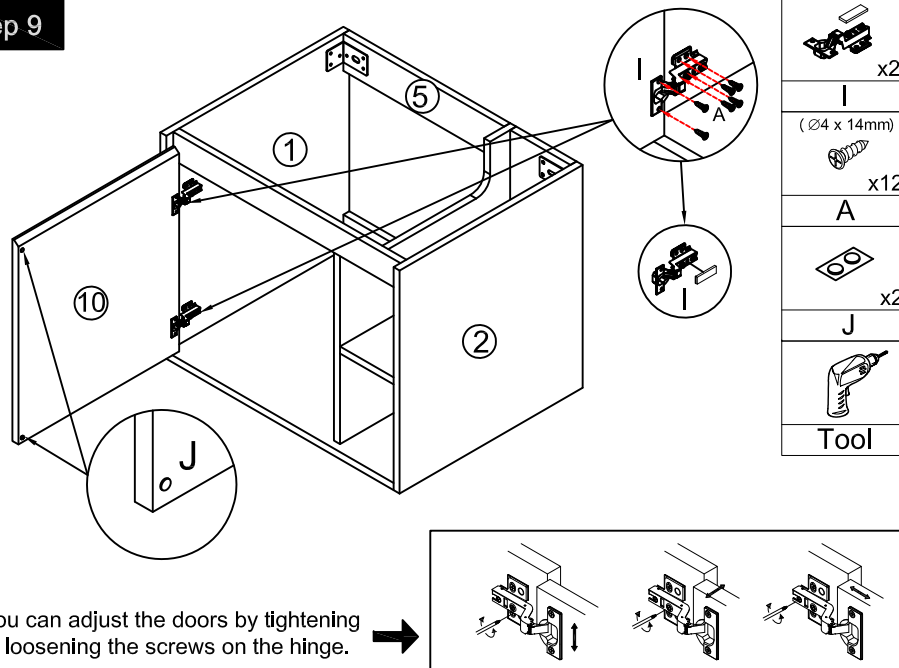
Step 12



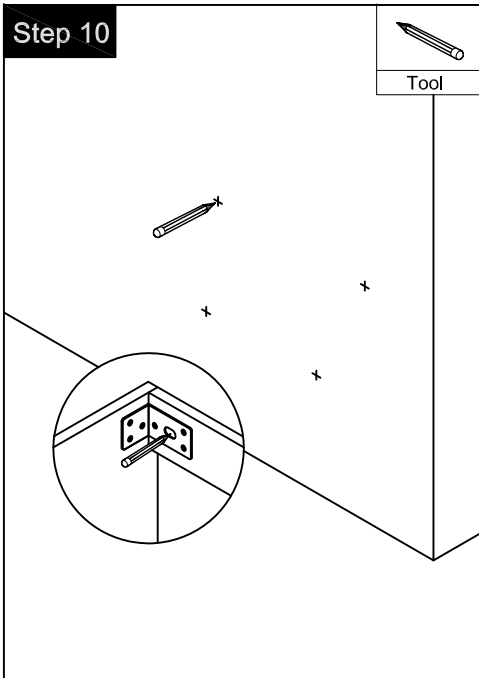
Step 13



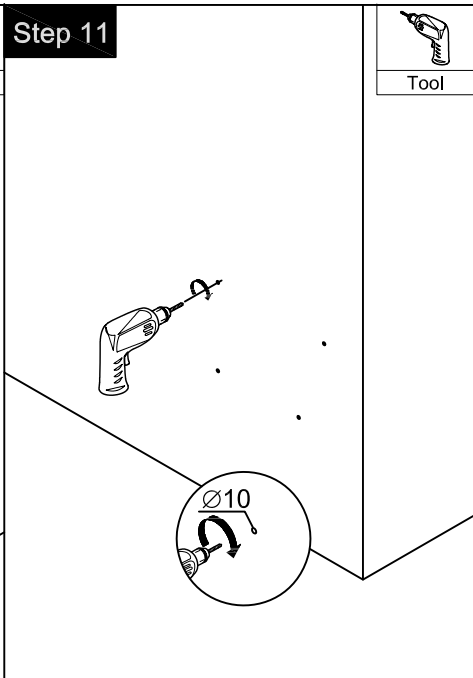
Step 9



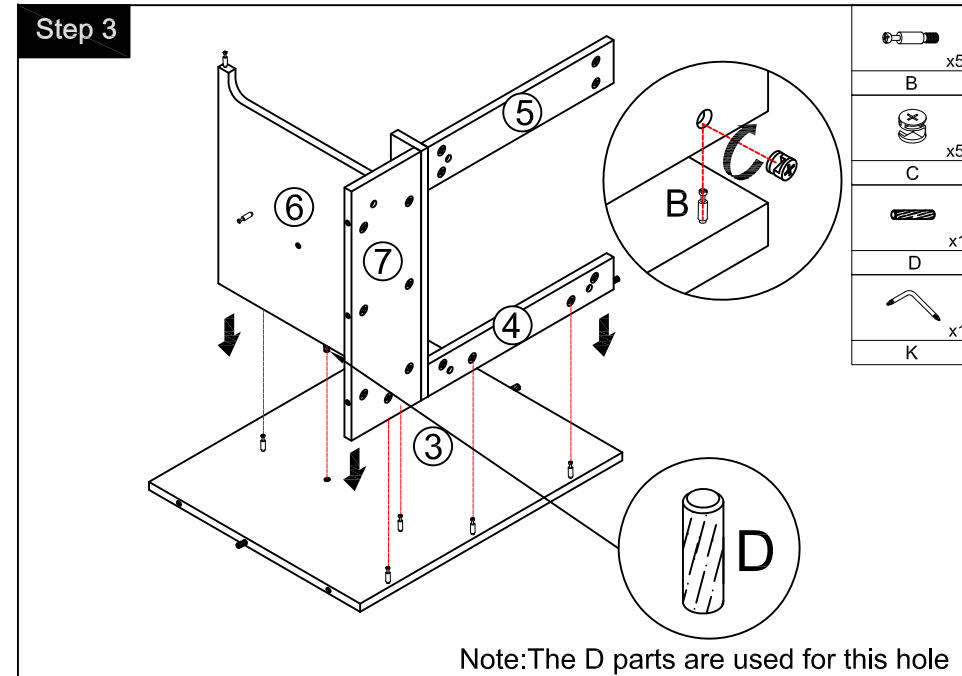
Step 10



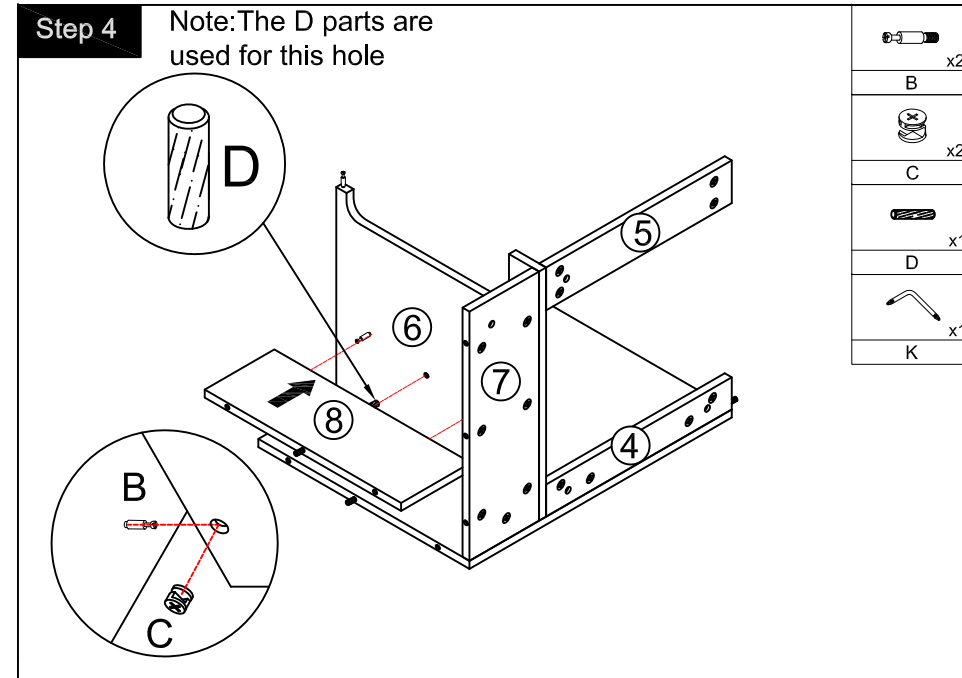
Step 11



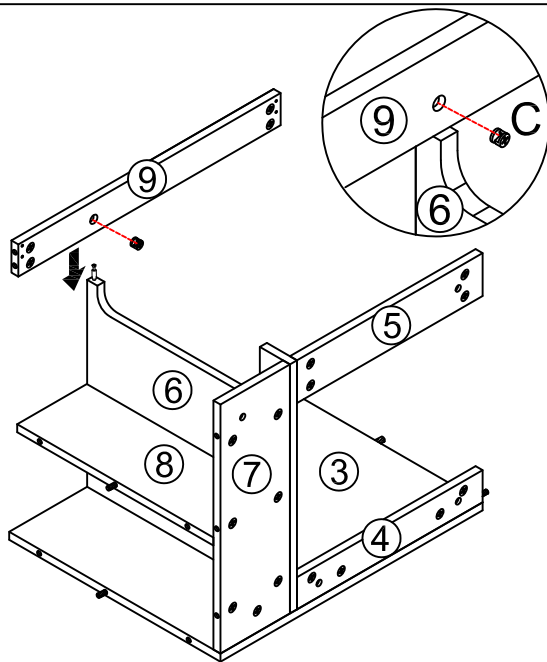
Step 3



Step 4

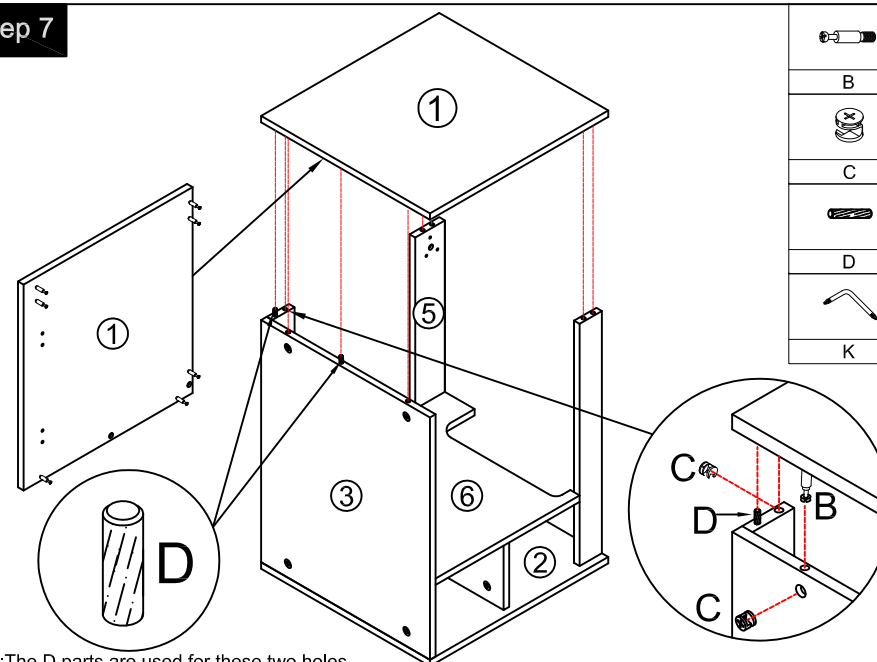


Step 5



	x1
B	
	x1
C	
	x1
K	

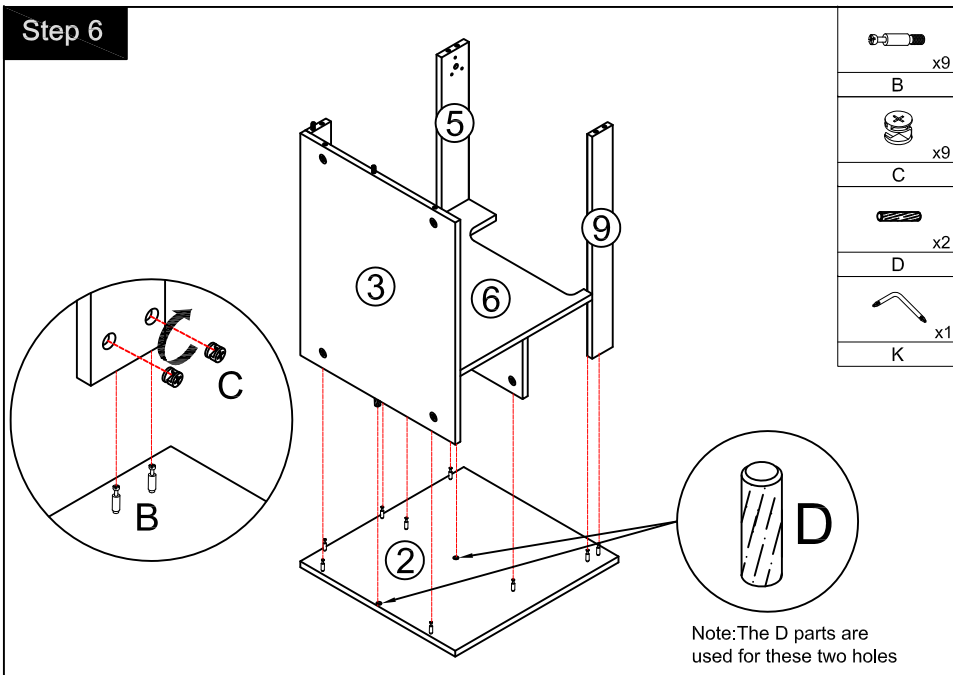
Step 7



Note: The D parts are used for these two holes

	x7
B	
	x7
C	
	x2
D	
	x1
K	

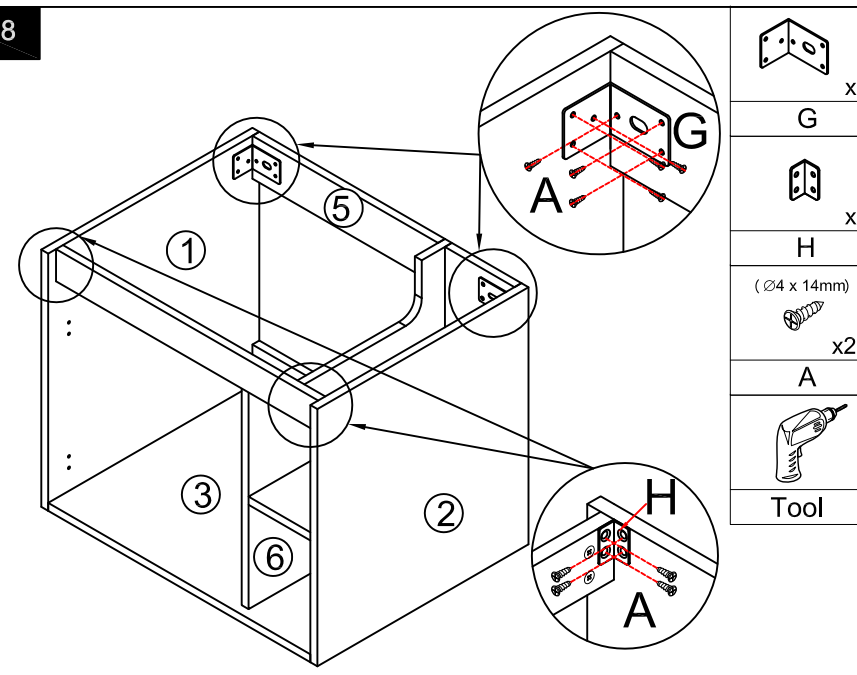
Step 6



Note: The D parts are used for these two holes

	x9
B	
	x9
C	
	x2
D	
	x1
K	

Step 8



	x2
G	
	x2
H	
	x20
A	
	x1
K	

Tool