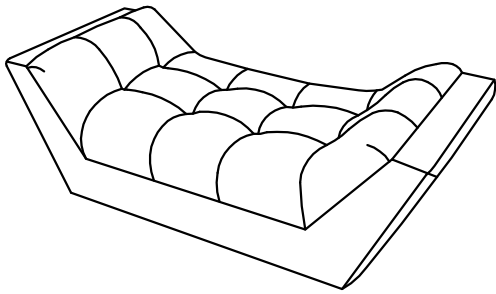


ASSEMBLY INSTRUCTIONS

Parts and Hardware

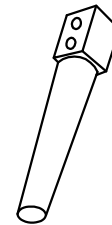
Please check to make sure you have all parts and hardware before starting assembly process.
(Attention: The Legs & Hardware bag can be found in the bottom of Seat.)

①



Ottoman (1)

②



Legs (4)

③



5/16*70mm (8)

④



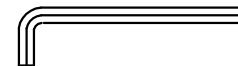
8*22*2mm (8)

⑤



M8 (8)

⑥



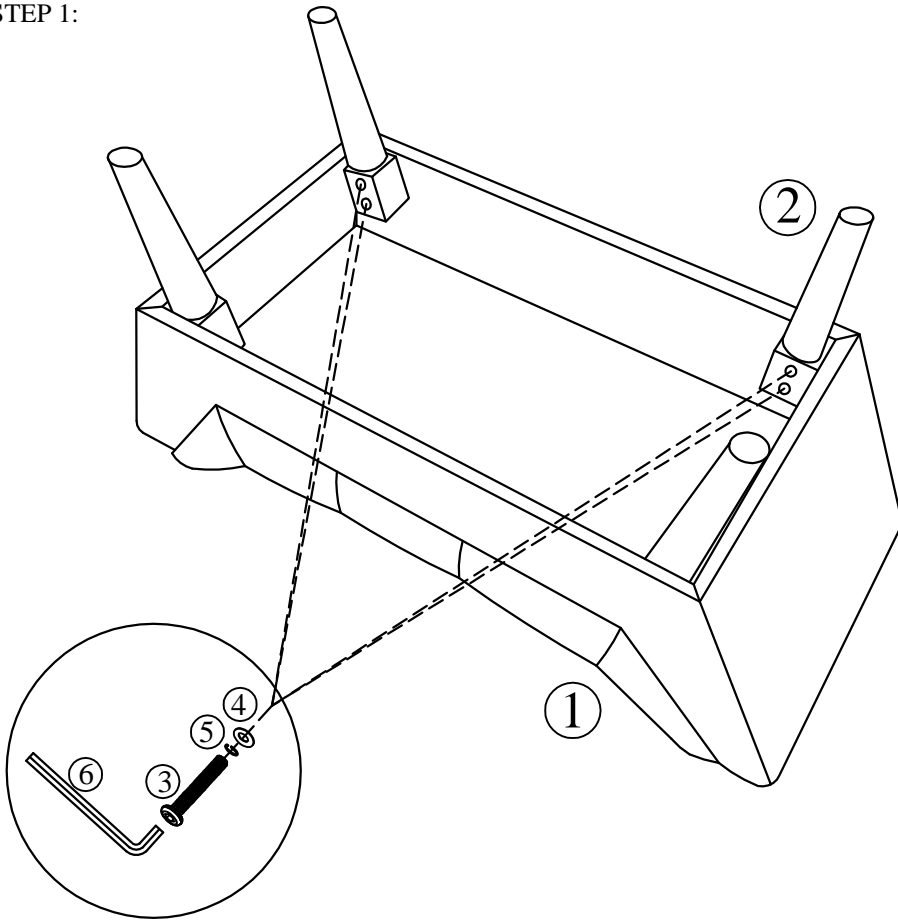
Allen Wrench (1)

ASSEMBLY INSTRUCTIONS

Assembly Instructions

Please read and understand all assembly instructions before beginning assembly process.
Do not tighten any single bolt until all bolts in holes on each step

STEP 1:



STEP 2:

