



## Electric Fireplace

This product is only suitable for well insulated spaces or occasional use

Please Retain For Future Reference



### Caution

- ◆ Please read all instructions carefully before using this product.
- ◆ Make sure that the voltage rating label on the type plate corresponds to your main voltage. If not see your retailer and do not connect the appliance.
- ◆ Never use the appliance unsupervised when in use.
- ◆ If you have to leave even for a short moment please stop the appliance.
- ◆ Keep out of reach of children and do not allow them to operate this appliance
- ◆ Only use the appliance for domestic purposes and in the way indicated in these instructions.
- ◆ From time to time check the cord for damages. Never use the appliance if the cord or any part of the appliance shows any signs of damage.
- ◆ If the supply cord is damaged, it must be replaced by the manufacturer, its service agent or similarly qualified persons in order to avoid a hazard.
- ◆ Make sure the connection cord does not touch any hot surfaces.



- ◆ **WARNING:** In order to avoid overheating, do not cover the heater.
- ◆ Keep the appliance at least 15cm (6inches) from walls and any other thing, to permit a good air circulation.
- ◆ Do not use the appliance outdoors
- ◆ Do not use if you have wet hands.
- ◆ Never use the appliance on or near hot surfaces.
- ◆ Never move the appliance by pulling the cord.
- ◆ Before cleaning the appliance, make sure it is unplugged from the power and that it is completely cooled.
- ◆ Do not clean the appliance with abrasive chemicals.

- ◆ Never use accessories that are not recommended or supplied by the manufacturer. It could cause danger to the user or damage to the appliance
- ◆ Never route the mains cable beneath carpet.
- ◆ Never use the heater to dry clothes or any other similar items.
- ◆ The heater must not be located immediately below a socket outlet.
- ◆ This heater must not be used with an extension lead.
- ◆ Do not use this heater with a programmer, timer or any other device that switches the heater on automatically, since a fire risk exists if the heater is covered or positioned incorrectly.
- ◆ Do not use this heater in the immediate surroundings of a bath, a shower or a swimming pool.
- ◆ **CAUTION:** In order to avoid a hazard due to inadvertent resetting of the thermal cutout, this appliance must not be supplied through an external switching device, such as a timer, or connected to a circuit that is regularly switched on and off by the utility.
- ◆ This appliance can be used by children aged from 8 years and above and persons with reduced physical, sensory or mental capabilities or lack of experience and knowledge if they have been given supervision or instruction concerning use of the appliance in a safe way and understand the hazards involved. Children shall not play with the appliance. Cleaning and user maintenance shall not be made by children without supervision.
- ◆ Children of less than 3 years should be kept away unless continuously supervised.
- ◆ Children aged from 3 years and less than 8 years shall only switch on/off the appliance provided that it has been placed or installed in its intended normal operating position and they have been given supervision or instruction concerning use of the appliance in a safe way and understand the hazards involved. Children aged from 3 years and less than 8 years shall not plug in, regulate and clean the appliance

or perform user maintenance.

◆ **CAUTION** — Some parts of this product can become very hot and cause burns. Particular attention has to be given where children and vulnerable people are present.

◆ **WARNING:** This heater is not equipped with a device to control the room temperature. Do not use this heater in small rooms when they are occupied by persons not capable of leaving the room on their own, unless constant supervision is provided.

◆ **Regarding the instructions for replacing bulb, thanks to refer to the below paragraph of the manual.**

### Operating Instructions

*Never cover the heater or obstruct the opening at the base of the heater, this could cause overheating and consequent risk of fire.*

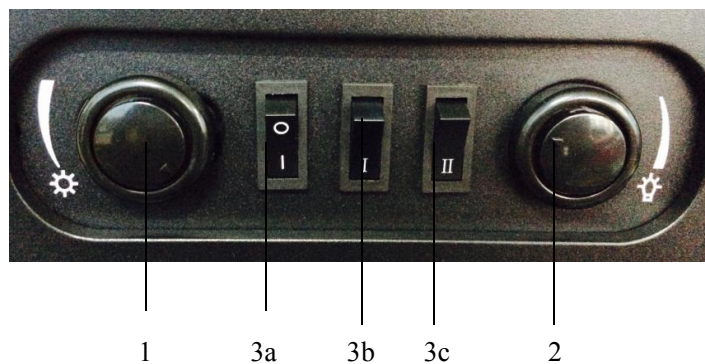
*Never move the heater when it is operating, this could cause the bulb breakdown. Please turn the heater off if you want to move it.*

When you turn the heater on for the first time you may notice a slight odor, this is harmless and will stop after a short amount of time.

### Heater Control Panel

Insert Plug Into Socket

The following switches are located under the controls cover at the front of the heater.



- Switch ( 3a ) Switchs ON/OFF electricity supply to the heater and flame effect

***Note:*** This switch must be in the ON position for heating operation.

- Switch ( 3b ) Switchs ON/OFF 900W heat output
- Switch ( 3c ) Switchs ON/OFF 1800W output with switch 3b

***Note:*** The flame effect can be operated with or without heat.

- Rotate thermostat control (1) clockwise or anti-clockwise to achieve desired room temperature.
- Increase or decrease the flame effect by rotating the flame adjustment switch (2).

## **Bulb Replacement**

Unplug from mains supply.

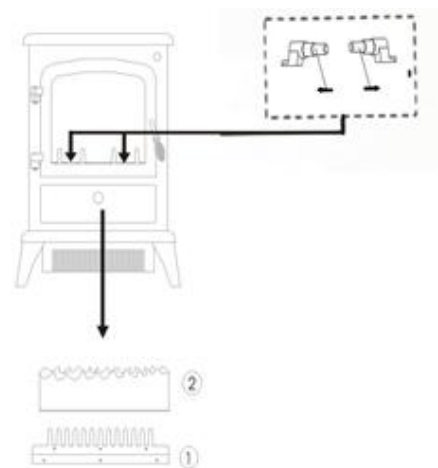
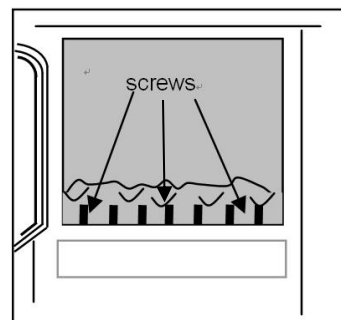
Loosen the screws at the front of the log bed. And then take off the fixed plate.

Pull the log bed from the both ends to lift up the log bed decoration.

Two bulbs are located underneath (see the figure below).

Replace the bulbs with a 25W G9 halogen bulb.

To reassemble, follow the above instructions in reverse order.



## **Safety Cut-Off**

This appliance is fitted with a safety cut-off which will operate if the heater overheats (e.g. Due to blocked air vents). For safety reasons, the heater will NOT automatically reset.

To reset the appliance, disconnect the appliance from the mains supply for at least 15 minutes. Reconnect the supply to the mains and switch on the appliance.

## **Maintenance**

Before cleaning or maintenance operation, switch off and unplug the appliance. Ensure it is perfectly cooled.

To remove the dust, wipe the appliance with a cloth

Never use abrasives or detergents

## **Troubleshooting**

**No light from the fuel effect:** Possibly a bulb failure. Remove the faulty bulb as detailed above and check it in a table lamp that is known to work.

**No heat or light:** Check the wall socket by plugging in a known working appliance. If socket is functional, and cord or plug is suspected, have them checked by an electrician.

**Light but no heat:** Check that the Thermostat on the heater is set above the ambient room temperature. Alternatively, the automatic cut-off may have engaged - see Safety Cut-Off section.

## **Disposal**

At the end of the product's serviceable life it should be disposed of thoughtfully and safely in accordance with local authority regulations. The plug should be removed from the power supply cord and the power cord cut from the heater

## **Technical Specification**

Voltage: 220-240V~50Hz

Rated power: 1850W

Lamp: 2x25W G9 Halogen Bulbs



Meaning of crossed –out wheeled dustbin:

Do not dispose of electrical appliances as unsorted municipal waste, use separate collection facilities.

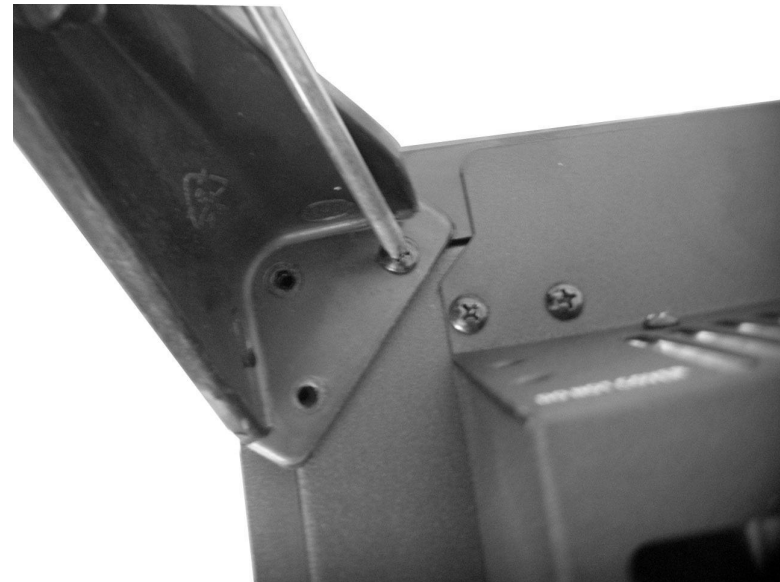
Contact you local government for information regarding the collection systems available.

If electrical appliances are disposed of in landfills or dumps, hazardous substances can leak into the groundwater and get into the food chain, damaging your health and well-being.

## **Fitting the feet**

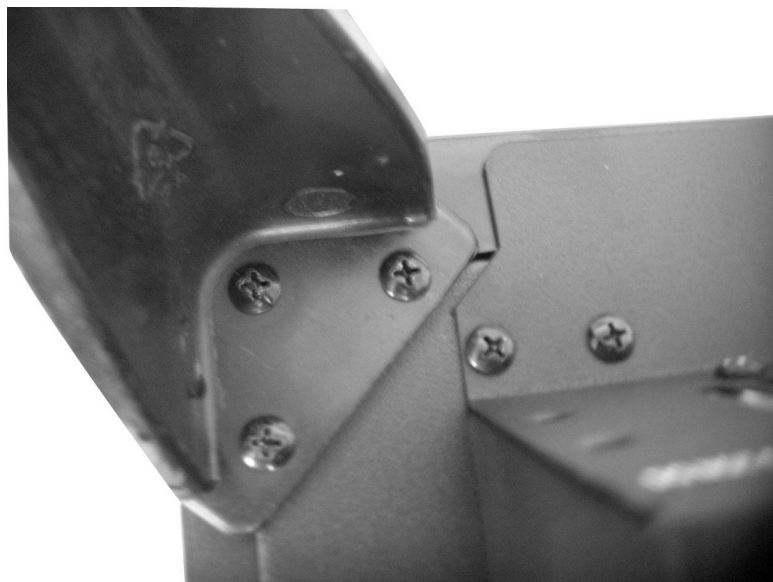
This stove is supplied with the feet removed in order to prevent damage during transportation. To fitting the feet, please follow these instruction.

1. Remove leg from the bag, and locate and line up holes in the leg, with holes in the underside of the stove body. Repeat the above for the other three legs.



2. With use of a screwdriver, secure leg with the three screws provided ( The screw is with the manual ) . Repeat the above for the other three legs.





3. This is how the leg looks when attached correctly.



4. This is how the stove will look when all four legs are in place.

## Information requirements for electric local space heaters

Model identifier(s): ND-180M

Item	Symbol	Value	Unit	Item	Unit
<b>Heat output</b>				<b>Type of heat input, for electric storage local space heaters only (select one)</b>	
Nominal heat output	$P_{nom}$	1.85	kW	manual heat charge control, with integrated thermostat	Not applicable
Minimum heat output (indicative)	$P_{min}$	0.925	kW	manual heat charge control with room and/or outdoor temperature feedback	Not applicable
Maximum continuous heat output	$P_{max,c}$	1.85	kW	electronic heat charge control with room and/or outdoor temperature feedback	Not applicable
<b>Auxiliary electricity consumption</b>				fan assisted heat output	Not applicable
At nominal heat output	$el_{max}$	0,0	kW	<b>Type of heat output/room</b>	

				<b>temperature control (select one)</b>	
At minimum heat output	$el_{min}$	0,0	kW	single stage heat output and no room temperature control	[no]
In standby mode	$el_{SB}$	0,0	W	Two or more manual stages, no room temperature control	[no]
				with mechanic thermostat room temperature control	[yes]
				with electronic room temperature control	[no]
				electronic room temperature control plus day timer	[no]
				electronic room temperature control plus	[no]

	week timer	
	<b>Other control options (multiple selections possible)</b>	
	room temperature control, with presence detection	[no]
	room temperature control, with open window detection	[no]
	with distance control option	[no]
	with adaptive start control	[no]
	with working time limitation	[no]
	with black bulb sensor	[no]