

Owner's Manual

---

# Rock Fountain with LED Lights



## CONTENTS

Contents .....	1
What's Included.....	2
Features .....	3
Assembling & Using Your Product .....	4
Replacement Parts.....	8
Troubleshooting .....	9
Caution .....	10
Warranty .....	11
Notes .....	12

## WHAT'S INCLUDED



Fountain Basin  
1x



Pedestal  
1x



Lotus Topper  
1 x



Pump  
1x



Pump Adaptor  
1x



Transformer  
1x

## LIMITED WARRANTY INFORMATION

Thank you for choosing our product! We aim to please with our wide range of products including Fountains, Birdbaths, Statuary, Pond Supplies & More. All of our products are constructed from the highest quality materials. In the event that we have not achieved our usual standard of excellence, we will repair or replace, at our discretion, within the warranty period. A valid proof of purchase, with the purchase date clearly indicated, must be provided. Photos of defective merchandise will also be required to help distinguish the actual cause of the defect. Please read below for a detailed description of warranty coverage.

- Water Damage**  
 Our products are not manufactured to withstand extreme temperatures. Improper storage that allows water to freeze within a product may cause damage, is considered negligence, and will not be covered under this warranty. The use of "hard water," and/or caustic cleaners, can affect the painted or other finishes.
- Paint & Color (Retention and/or Loss)**  
 The use of water will cause natural erosion to the color. This area can be touched up using standard paint. The paint is designed to protect the entire finish against breakdown of color. As with any product, all finishes with time will gradually fade and discolor. The warranty will only cover against severe or complete fading, within the first year from date of purchase, with the above exclusion.
- Procedure/Service**  
 This may be necessary to distinguish between a partial or complete replacement of a defective product. The warranty does not cover any items with multiple parts; the warranty will ONLY cover the individual component of the unit/item that may be defective. Replacement parts can be made available to a consumer through the original selling party, or an approved parts retailer. If this is not an option, contact our customer service department. **Item is covered under one year limited warranty from the date of purchase. When requesting replacement parts due to a warranty claim after 30 days of purchase, credit card information will be requested for shipping charges.**
- Not Covered Under Warranty**  
 The limited warranty will NOT cover cases of damages due to:
  1. Damages caused in Transit
  2. Inadequate care and/or neglect
  3. Environmental and/or natural elements
  4. Immersion in water, unless specified
  5. Improper Installation/Storage and/or Maintenance

*This warranty is void if the product has been damaged by accident, misuse, negligence, improper installation and/or modifications have occurred. This includes any and/or all defects arising out of freezing water damage, hard water damage, failure to keep the unit clean and free of harmful additives such as bleach, chlorine, etc.... which affects the paint and/or parts. This warranty also does not cover any additional charges or installation, removal, disposal and/or shipping costs or consequential damage associated with any warranty claim.*

## CAUTION



- Always unplug the pump from the electrical outlet before cleaning & handling
- Use with clean water only, do not place the fountain and/or parts in any other liquid.
- Periodically change water & clean the pump to keep free from microorganisms
- Disconnect and store the unit in a dry place if not in use for an extended period of time, or during freezing weather.
- Do not operate the fountain in temperatures below 41° F / 5° C.
- Do not operate with water above 90°F / 30°C.
- Do not lift, carry or pull the pump by the power cord.
- Do not exceed the maximum voltage & wattage on transformer.
- **NEVER LET THE PUMP RUN DRY.**

## FEATURES

- LED lights in the lotus flowers are energy-efficient, and create a stunning nighttime display
- Flowing water adds a soothing sound to any environment



- Made of sturdy, durable cement and polyresin materials

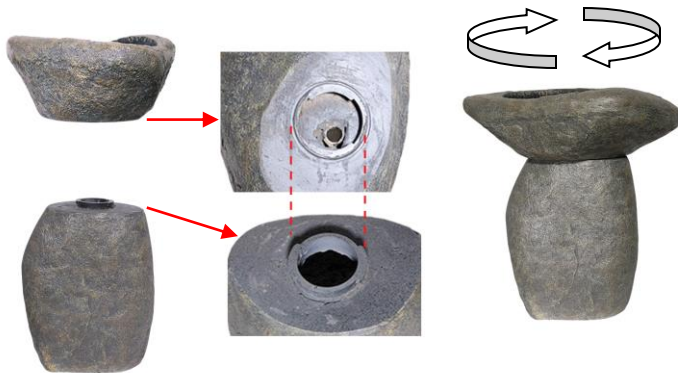
## SPECIFICATIONS

Power Requirements..... Standard Household 120V  
Water Capacity..... 1 <sup>5</sup>/<sub>8</sub> US Gallons / 6 Liters  
Tubing Diameter..... 3/5" I.D.

## ASSEMBLING & USING YOUR PRODUCT

Unpack all components carefully. Please check to ensure all parts have been removed from the packaging. *\*Some splashing may occur when the product is in use.*

1. Place the pedestal on a smooth & level surface. Then attach the fountain basin to the top of the pedestal. Make sure the tabs on the pedestal align with the slots on the basin. Turn the basin clockwise to secure.



2. Remove the pump from its packaging and adjust the flow control to the lowest setting to avoid splashing until the fountain is completely assembled.



### Quick Tip #1

Turn adjuster counter-clockwise to increase water flow. Turn adjuster clockwise to decrease water flow.

## TROUBLESHOOTING

If you have any questions and/or problems, please contact the retail store you purchased this fountain.

### • If your pump fails to run

- Check the circuit breaker or try a different outlet to make sure the pump is receiving electrical power.
- Check the pump discharge and tubing for any kinks and/or obstructions
- Any buildup obstructing the water flow can be flushed with a garden hose
- Check the rotor by removing the front cover & plate to access the impeller area. Turn the rotor and make sure that the rotor is not jammed or broken

### • If your pump “spews”

- Check the water level to make sure the pump is completely submerged and there is enough water in the basin to operate your fountain. Not having enough water will cause your pump to spew

### • If your pump is making abnormal loud noises

- Disconnect the pump from the power supply and remove the front cover & plate
- Carefully grip the impeller and gently pull the impeller/rotor assembly out of the pump housing
- Rinse the impeller/rotor assembly and clean the cavity with clean water. If breakage or damage is found, contact your local retailer for parts

## REPLACEMENT PART

- Replacement Pump
- Replacement Transformer

## ALSO AVAILABLE FROM

- **Fountain Care Formula**  
Foam and scale remover for indoor and outdoor fountains.
- **UV Acrylic Sealer**  
Provides protective clear coating for all painted surfaces.
- **Touch Up Paint Kit**  
Includes primer, thinner, 7 paint colors, applicator and sealer.

3. Attach the pump to the tubing at the bottom of the Lotus topper. Use the included pump adapter to ensure a tight fit. Also attach the two LED power cords from the topper to the two cords from the pump. Twist the protective sheaths to secure and protect the connection.

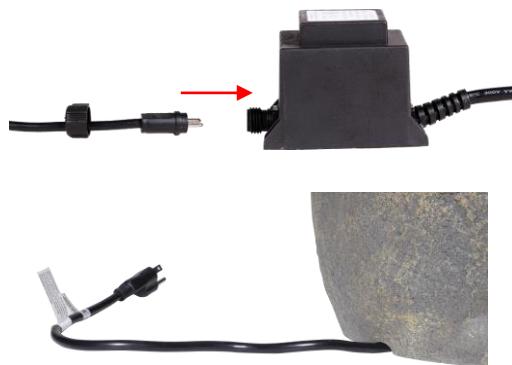


4. Place the Lotus topper and pump assembly into the fountain basin. Make sure the pronged cable from the pump runs through the opening of the basin to the bottom of the pedestal and the pump sits at the bottom of the basin.





5. Carefully lift the fountain to reach the pronged cable from the previous step underneath the pedestal and attach it to the transformer. Place the transformer under the pedestal and run the transformer's power cable through the slot at the bottom of the pedestal. *Note: Be cautious by holding the top of the fountain while lifting so it doesn't fall over.*



6. Gently pour water into the fountain basin, being careful not to overflow and cause splashing. Make sure the water completely submerges the pump and the water runs clear during operation.

**NOTE:** We recommend that you use distilled water to prevent scale build-up. The first time you operate the pump it can take up to 5 minutes for the air to be completely expelled and water begins to flow properly



7. If you wish to adjust the water flow, lift the Lotus topper assembly and adjust the pump before plugging in. (see Quick Tip #1) Once set, replace the assembly and then plug the power cord into a standard wall socket. *Note: Make sure there is no water around the plug & keep the power source in a dry place.*



8. Congratulations, your fountain is now complete. Don't forget to add water regularly as water will evaporate over time.



**Relax and enjoy your new fountain.**