

Congratulations on your New Ferris Feeder!

Here are some helpful care instructions:

Be Patient

Like anything, it takes a few days for birds to get comfortable with new moving objects, but it doesn't take them long to figure out where there's food. They'll be feeding off your Ferris Feeder in no time!

Filling & Refilling

For best spinning results, fill feeding cups equally using the same type of feed in each cup. This will ensure equal weight distribution at the start and by using the same feed in each cup, the cups usually empty at an equal rate. If cups are getting unequal and feeder fails to spin, add bird seed to each cup until all cups are equal.

Cleaning

Keeping baskets clean is recommended. Discard old seed and replenish with new, fresh bird seed. Hand wash with mild dish soap and rinse thoroughly with clean water. Make sure baskets are dry and drain holes are clear of debris before refilling with seed.

Rain / Snow

Depending on the type of seed you use, rain or sprinkler water may cause your basket's drain holes to clog. If this happens simply empty the seed and clear the drain holes of any debris.

Location

Place Ferris Feeder in an area clear of branches or anything that could hinder Ferris Feeder from spinning. Unfortunately, squirrels love bird seed. We recommend placing the Ferris Feeder away from any fence, tree or object from which a squirrel could jump. If you choose to relocate your feeder, lift the feeder top off before moving the stake to avoid damage or injury.

Bird Feeder

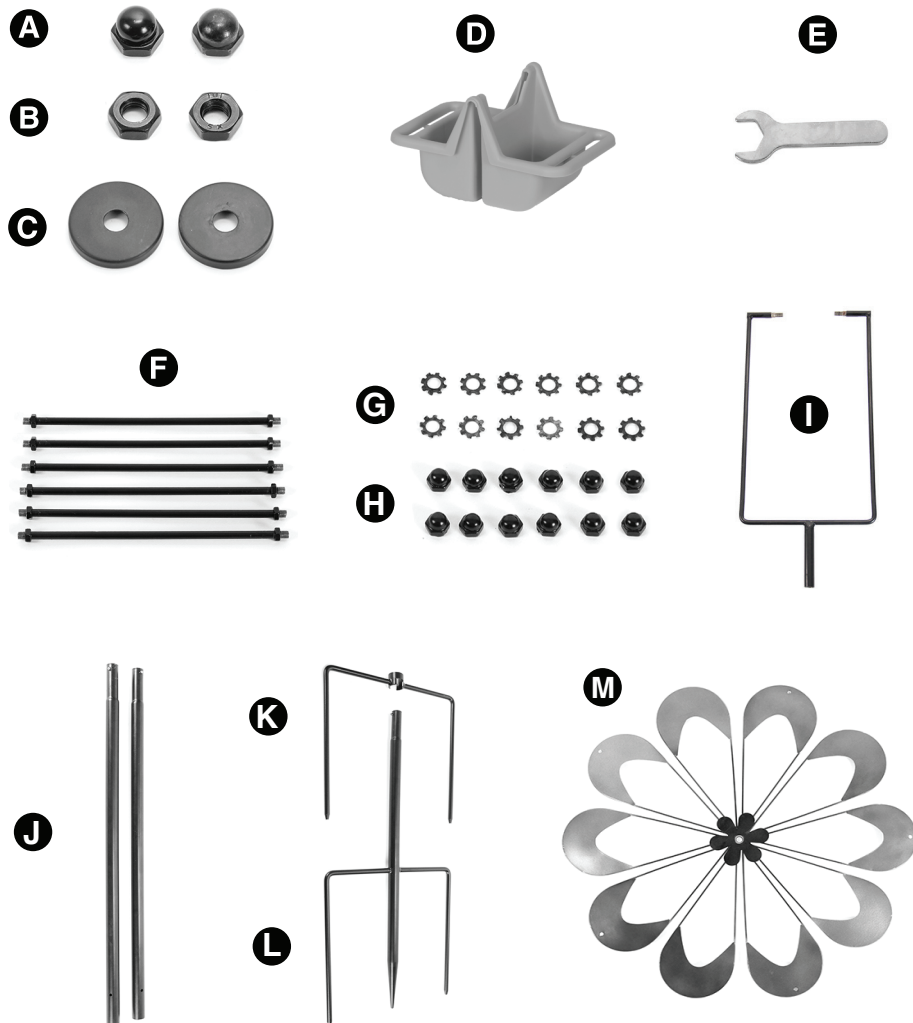
Assembly & Care Instruction



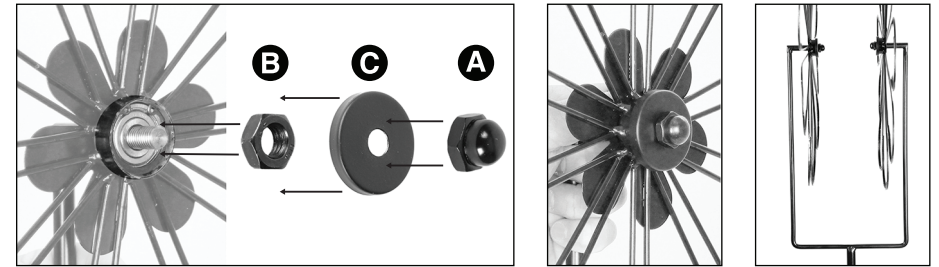
Bird Feeder

Assembly & Care Instruction

- | | |
|-------------------------------|---------------------------------|
| A. Large Cap Nut (2) | H. Small Cap Nut (12) (2 extra) |
| B. Nut (2) | I. U-Bar |
| C. Cap (2) | J. Pole (2) |
| D. Basket (5) | K. Stake Support |
| E. Wrench | L. Stake Base |
| F. Support Rod (6) (1 extra) | M. Wheel (2) |
| G. Lock Washer (12) (2 extra) | |

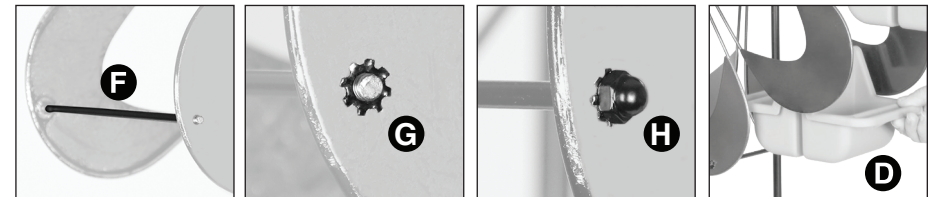


1. Attach either wheel (M) face-out on U-bar (I) by inserting threaded portion through center hole of wheel. Then, screw on nut (B) and tighten firmly with wrench (E). Next, place cap (C) over the nut and secure it with one of the large cap nuts (A). Tighten with wrench (E). Repeat this process to attach the second wheel.



Lay assembly on the ground for the following steps.

2. Line up wheel colors to ensure that the basket support rods will line up with their respective holes. Attach basket support rods (F) using lock washers (G) and small cap nuts (H). Tighten firmly. Repeat for all rods. Hang baskets (D) from basket support rods by placing the baskets over the support rods and pushing down.



3. Attach poles (J) to U-bar (I) by first, slipping one of the poles (J) directly into bottom of the U-bar until the button locks. Then, slip the second pole into the first pole until the button locks. Next, slide in stake support (K) over the stake base (L). Finish assembly by slipping in the stake base (L) to the open end of that last pole until the button locks. When everything is assembled, total height of Ferris Feeder should be close to 7ft tall. Insert into ground and make sure it is standing straight.

