

# Assembly Instructions

⚠ Before you throw the carton, please ensure that you have all the parts needed for the assembly.

⚠ **Hardware Note:**  
1. For each step please don't fully tighten all the screws at first, when they all align to the holes you can fully tighten them.  
2. All the bolts should be assembled **vertically** to the holes.

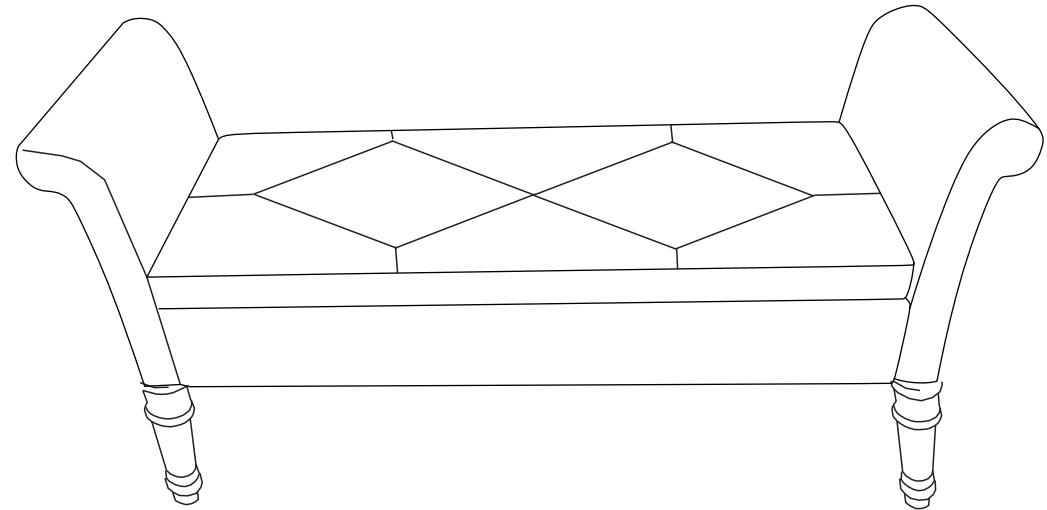
⚠ **Spare parts** can be found in the hardware box if you do not have enough bolts for assembly.



2pcs



2pcs



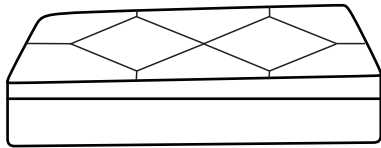
⚠ THIS INSTRUCTION BOOKLET CONTAINS IMPORTANT SAFETY INFORMATION. PLEASE READ AND KEEP FOR FUTURE REFERENCE.

# Assembly Instructions

## Parts and Hardware

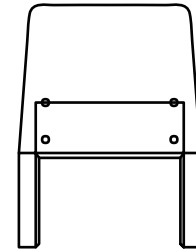
Please check to make sure you have all parts and hardware before starting assembly process.

①



Seat Cushion 1pc

②



Arms 2pcs

Ⓐ



Blots 8pcs

Ⓑ



Flat washers 8pcs

Ⓒ

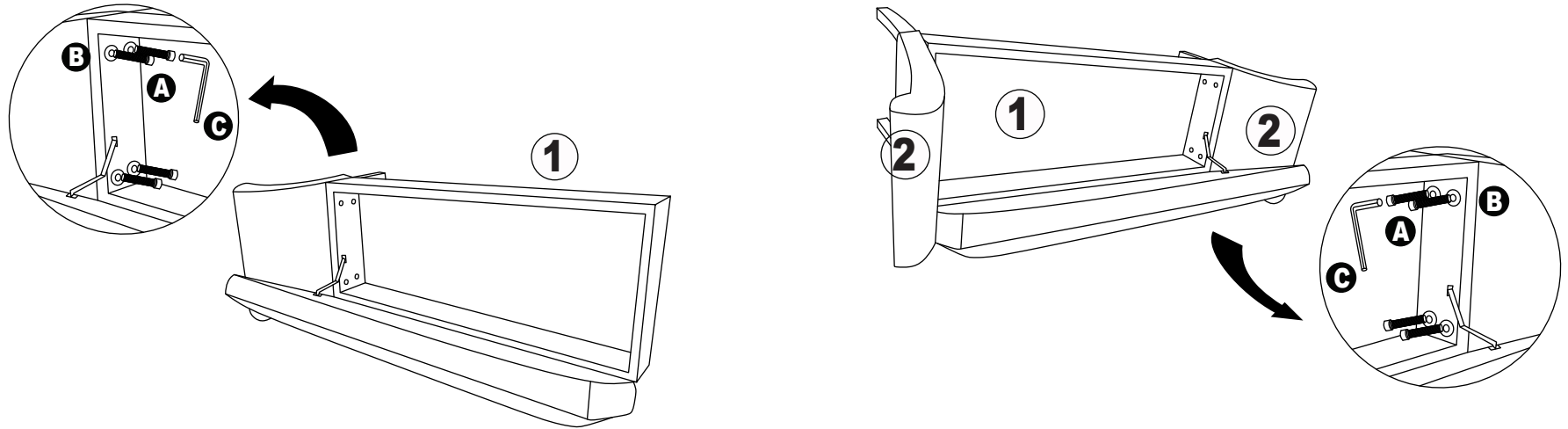


Wrench 1pc

# Assembly Instructions

## Assembly Instructions

Step 1: Connect 2 arms to seat using bolts (A), flat washers (B). Half tighten the bolts one by one.



Step 2: Put the pre-assembled ottoman on flat floor, when the 4 legs are steady, fully tighten the bolts by the short side of wrench.

