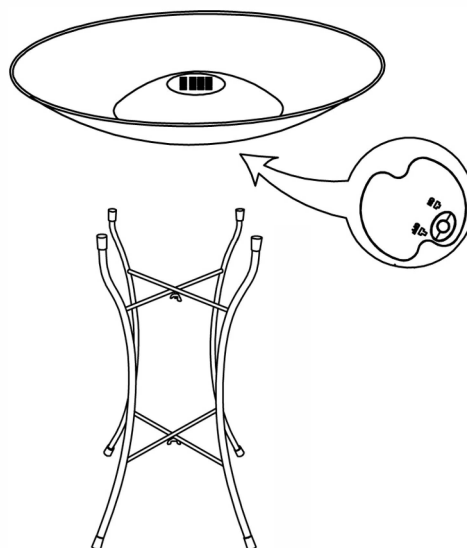
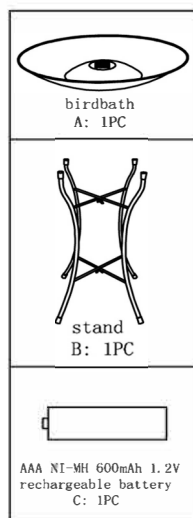


ASSEMBLY INSTRUCTION

Unpack all parts from the packaging and ensure there are no missing or damaged parts. If any parts are missing or damaged, do not attempt to assemble or use the product.

• No tools required

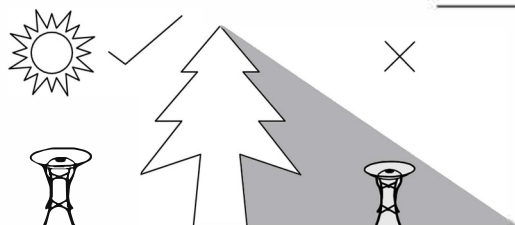
PARTS:



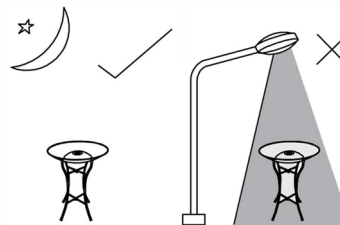
INTRODUCTION FOR SOLAR LIGHT

Solar lights work by using electricity generated by the solar panel to charge internal batteries. These batteries are then used to power the light. When switched on the lights automatically illuminate at night by using a light sensor. The duration of illumination will depend on the amount of sunlight and therefore charge received by the batteries.

POSITION

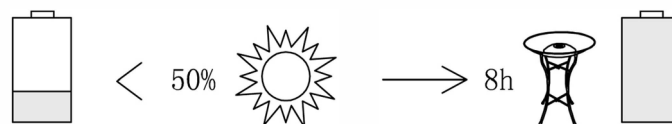


Position the Solar panel to receive the maximum amount of sunlight.



Do not position under bright light as this will prevent the light switching on at night

FIRST USE



Whilst there may be some initial charge in the battery, we recommend fully charging it before first use. Leave the switch in the "OFF" position for 2 sunny days to ensure the battery is fully charged. Once fully charged switch to "ON" and your light will come on automatically at night.

NOTE: The diagrams shown are for illustrative purposes only and are not to scale

INSTRUCTIONS: Turn solar unit on by pressing the power button located on the switch panel. Place the product in direct sunlight. For better performance, make sure solar panel have been fully charged in direct sunlight for approximately 8-10 hours.

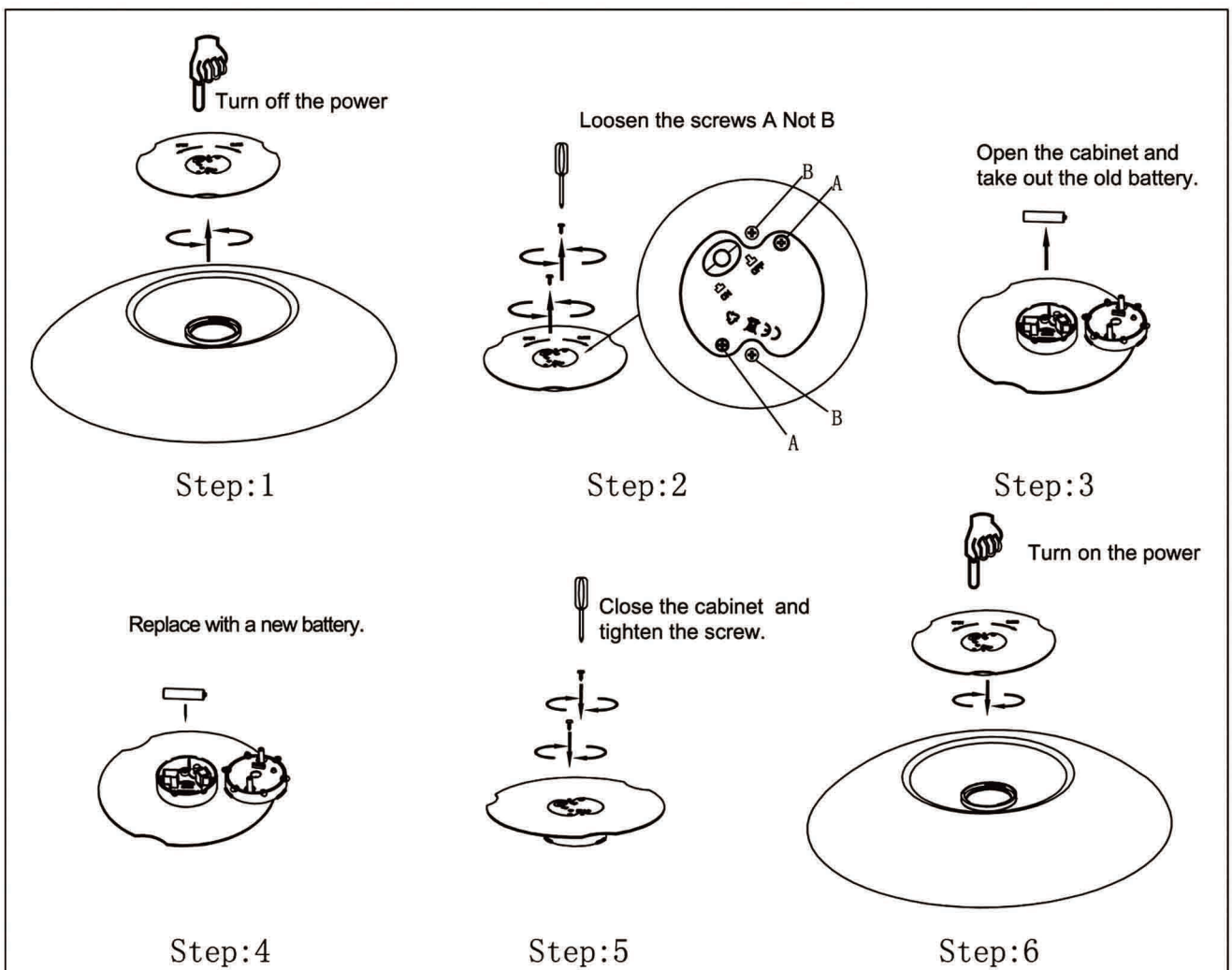
WARNING: AAA NI-MH 600MAH, 1.2V rechargeable battery. Battery must be recycled or disposed of properly. Do not dispose of batteries in fire. They may explode or leak, LED light: 3.0V

IMPORTANT: Freezing water will break the glass

BATTERY

Rechargeable batteries allow multiple usage and can be charged repeatedly. Although they lose capacity as the number of charge cycles increases even without mistreatment. It is recommended to switch the battery off for 3-5 days exposed to direct sunlight until it's fully charged. If the battery still does not charge, it may be replaced within 90 days of the purchase date.

CHANGE BATTERY



- Warning:**
1. Battery must be recycled properly.
 2. Do not dispose of old batteries in household waste.
 3. Do not dispose of batteries in fire or expose to excessive heat.
 4. Do not mix old and new batteries.
 5. Do not mix alkaline, standard(carbon-zinc), or rechargeable batteries.