



Eco long-lasting



Water repellent



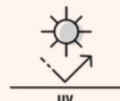
Rotproof and mildew resistant



Easy care



Maximum color fastness



UV resistant

HOW TO HANG OUR EMBOSSED NON-WOVEN WALLPAPERS

Hanging textured embossed non-woven wallpaper provides an excellent means of enhancing your walls with a touch of sophistication. Below are the instructions for properly installing this type of wallpaper

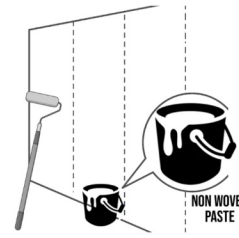
Before You Start

Unwrap the wallpaper rolls and allow them to unfurl within the room where you intend to install them.

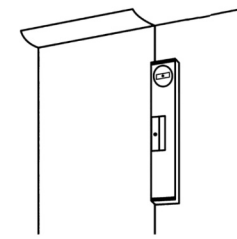
Ensure your walls are smooth, clean, and completely dry. You can refer to a wall preparation checklist for various wall types here.

Verify that you have all the necessary tools before starting. You can find these tools at your local paint or hardware store

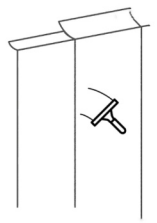
DIY projects are often more enjoyable and manageable when done with company. Installing wallpaper is no exception. Reach out to a friend, family member, crush, or colleague, and let them know you could use their assistance. Be sure to offer a tasty incentive, like pizza, to sweeten the deal.



Apply the adhesive to the wallpaper

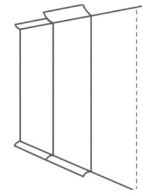


Clean your surface and measure

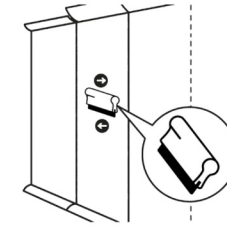


Use a squeegee to apply the first roll of wallpaper

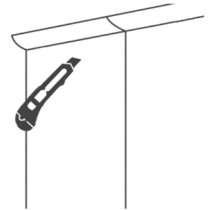
Before beginning the wallpaper installation, check that all the rolls are present and in good condition. It's best to start hanging the wallpaper from the left side, beginning at the left corner of the wall. Ensure the lengths are placed next to each other without any overlap, and most importantly, the first length should be perfectly vertical. To achieve this, a helpful tip is to make a pencil mark one wallpaper width from the left near the ceiling, then use a plumb line on this mark to create a straight vertical line down the wall. Align your first length of wallpaper with this pencil line for an accurate start.



Apply the next roll of wallpaper, adjusting its position before the adhesive dries.



Allow 2 inches excess length



Trim any excess edges and wipe off any surplus paste with a damp sponge

Apply the wallpaper adhesive directly onto the wall, ensuring even coverage across the entire surface. Be meticulous to avoid leaving any spots uncovered, as this could lead to bubbles in the wallpaper. Work on pasting an area equivalent to the width of one and a half lengths at a time. Starting from the floor, unfurl the wallpaper roll upwards towards the ceiling. Lightly attach it at the top and verify that it's hanging perfectly vertical. When aligning strips, avoid forcing them together; it's better to reposition the strip if the edges don't meet seamlessly. Make certain the wall is properly pasted where the lengths meet to hide any visible edges.

Be cautious not to get adhesive on the front side of the wallpaper. If you do, promptly remove any excess paste using a damp wallpaper sponge. Gently smooth each length using a clean wallpapering tool or brush, starting from the ceiling down to the floor and working from the middle towards the edges. After hanging the wallpaper, trim any surplus material along the ceiling and floor, using a sharp blade to prevent tearing. Ensure the room is adequately ventilated and maintained at normal room temperature for 24 hours to permit the paste to dry properly.

