

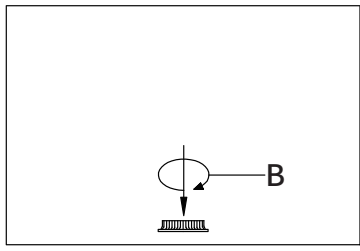
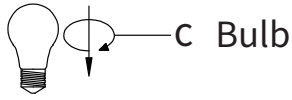
1 × E26 Socket
Max.60W Bulb
(not included)

Just Scan the Below Code
for Installation Video

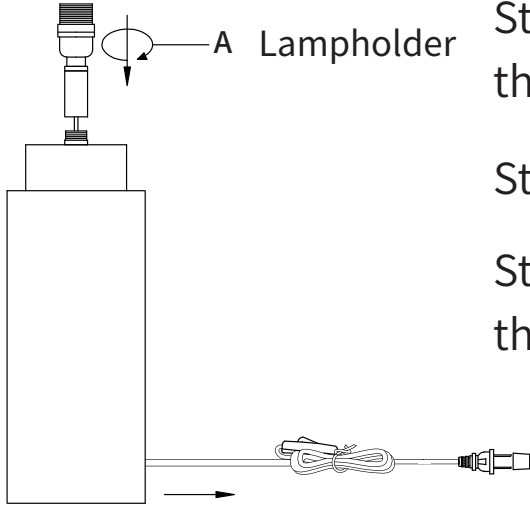


Installation Video
335W

Installation Steps



Fixing Ring



Lampholder

Open the packaging and make sure all parts are in good condition.

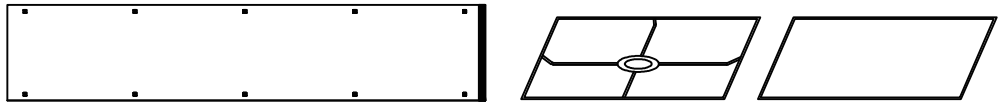
Step 1: Screw Lamp Holder (A) onto Lamp Base.

Step 2: Assemble the Lamphshade and screw the fixing ring(B)

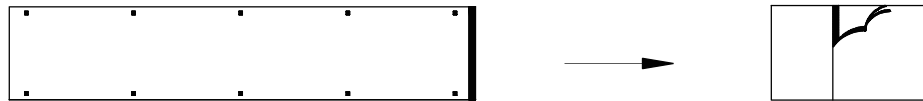
Step 3: Install a Bulb (C).

Step 4: Plug in the power source and turn on the light.

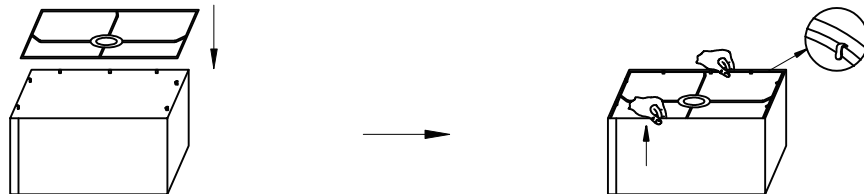
How to assemble the lampshade: put the top ring and bottom ring into built-in clamps, and fix the joining end of the lampshade.



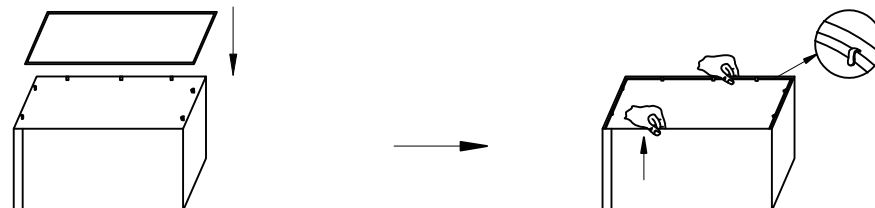
①



②



③



④

