



User Manual

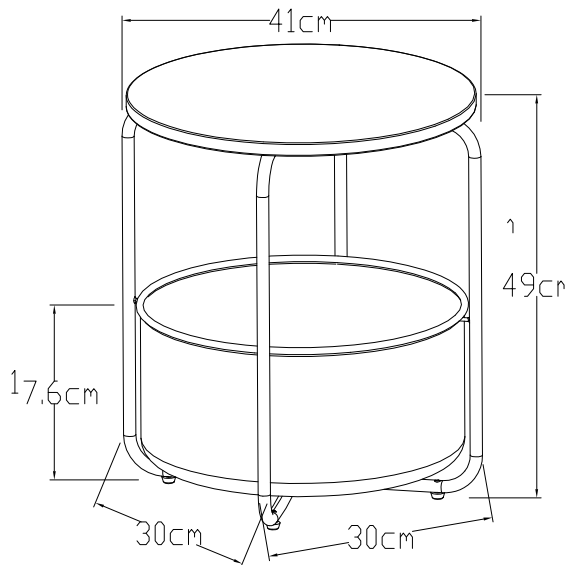
End Table

Specification

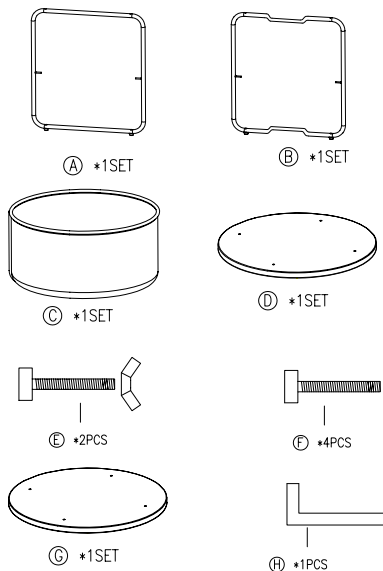
Product Name: End Table

Size: 19.2" H x 16" Dia(49 x 41 cm)

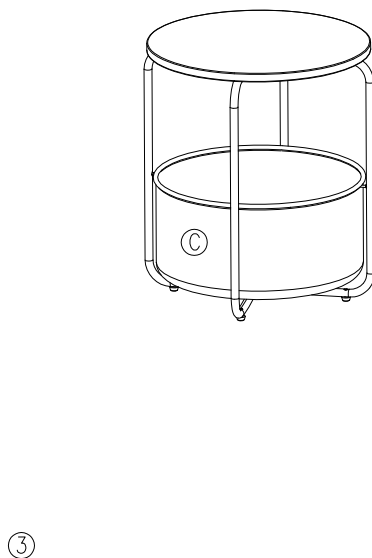
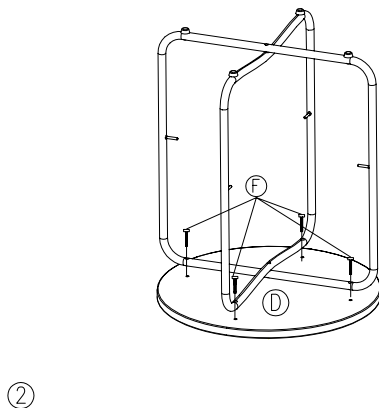
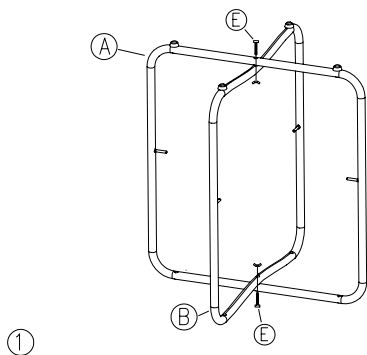
Weight: 3KG/6.6lbs



Parts List



ASSEMBLY INSTRUCTIONS



NOTE

1. Please read the user manual before using.
2. Please check you have all hardware before assembling.
If you are missing any hardware, please contact us.
3. Please do not tighten screws before all screws are in the right place.
4. Please do not use this product unless all bolts, screws and knobs are firmly secured.
5. Please keep children and pets away from the assembly area because it contains small parts that could cause choking if swallowed.
6. Please keep all plastic wrapping materials away from babies and children to avoid danger of suffocation.

CHILDREN MUST BE SUPERVISED

After-sale Service

We strive to provide excellent after-sales support to ensure your satisfaction with our products. Here are our guidelines and procedures:

1. **Warranty Coverage:** Our products are covered by a 10-year warranty against defects in materials and workmanship from the date of purchase. This warranty excludes damages resulting from misuse, accidents, alterations, or improper assembly.
2. **Claims Process:** If you believe your product is defective or requires service under warranty, please contact our customer support team. Provide your order details, a description of the issue, and any relevant photos to expedite the process.
3. **Returns and Refunds:** We offer a 30-day return policy for products returned in their original condition. Returns due to buyer's remorse or non-defective reasons may be subject to restocking fees.
4. **Customer Support:** Our dedicated support team is available 7*24 hours customer service to assist you with any questions, concerns, or assistance.
5. **Feedback and Improvement:** We value your feedback to continually improve our products and services. Please feel free to share your experience with us.



Thank you for choosing.

We are committed to ensuring your satisfaction
throughout your ownership experience.

