

Writing Table/Schreibtisch/
Bureau d'Écriture/Escritorio/
Tavolo con Gambe Incrociate/Stolik pisarski

THIS INSTRUCTION BOOKLET CONTAINS IMPORTANT SAFETY INFORMATION. PLEASE READ AND KEEP FOR FUTURE REFERENCE.

EN



Before You Start

- ⚠ Please read all instructions carefully.
- ⚠ Retain instructions for future reference.
- ⚠ Separate and count all parts and hardware.
- ⚠ Read through each step carefully and follow the proper order.
- ⚠ We recommend that, where possible, all items are assembled near to the area in which they will be placed in use, to avoid moving the product unnecessarily once assembled.
- ⚠ Always place the product on a flat, steady and stable surface.
- ⚠ Keep all small parts and packaging materials for this product away from babies and children as they potentially pose a serious choking hazard.

DE



Vor dem Beginnen

- ⚠ Bitte lesen Sie alle Anweisungen sorgfältig durch.
- ⚠ Bewahren Sie die Anweisungen zum zukünftigen Verwendung auf.
- ⚠ Überprüfen Sie, ob alle Teile und Zubehörteile vorhanden sind.
- ⚠ Lesen Sie jeden Schritt sorgfältig durch und befolgen Sie die richtige Reihenfolge.
- ⚠ Wir empfehlen, alle Teile möglichst in der Nähe des Aufstellungsortes zu montieren, um unnötige Bewegungen nach der Montage zu vermeiden.
- ⚠ Stellen Sie den Artikel immer auf eine ebene, feste und stabile Fläche.
- ⚠ Halten Sie alle kleinen Teile und Verpackungsmaterialien fern von Babys und Kindern, ansonsten besteht Erstickungsgefahr.

FR



Avant de Commencer

- ⚠ Veuillez lire attentivement toutes les instructions.
- ⚠ Conservez les instructions pour vous y référer ultérieurement.
- ⚠ Vérifiez toutes les pièces et les accessoires.
- ⚠ Lisez attentivement chaque étape et suivez l'ordre correct.
- ⚠ Nous recommandons que, dans la mesure du possible, tous les produits soient assemblés à proximité de la zone où ils seront utilisés, afin d'éviter tout déplacement inutile du produit une fois assemblé.
- ⚠ Placez toujours le produit sur une surface plane et stable.
- ⚠ Conservez toutes les petites pièces de ce produit et les matériaux d'emballage hors de portée des bébés et des enfants, car ils pourraient présenter un risque d'étouffement.

ES



Antes de Empezar

- ⚠ Lea atentamente todas las instrucciones.
- ⚠ Conserve las instrucciones para futuras consultas.
- ⚠ Separe y cuente todas las piezas y los accesorios.
- ⚠ Lea detenidamente cada paso y siga el orden correcto.
- ⚠ Recomendamos que, siempre que sea posible, todos los elementos se monten cerca de la zona en la que se van a utilizar, para evitar mover el producto innecesariamente una vez montado.
- ⚠ Coloque siempre el producto sobre una superficie plana, estable y firme.
- ⚠ Mantenga todas las piezas pequeñas y los materiales de embalaje de este producto lejos de los bebés y los niños, ya que pueden representar un grave riesgo de asfixia.

IT



Prima di Iniziare

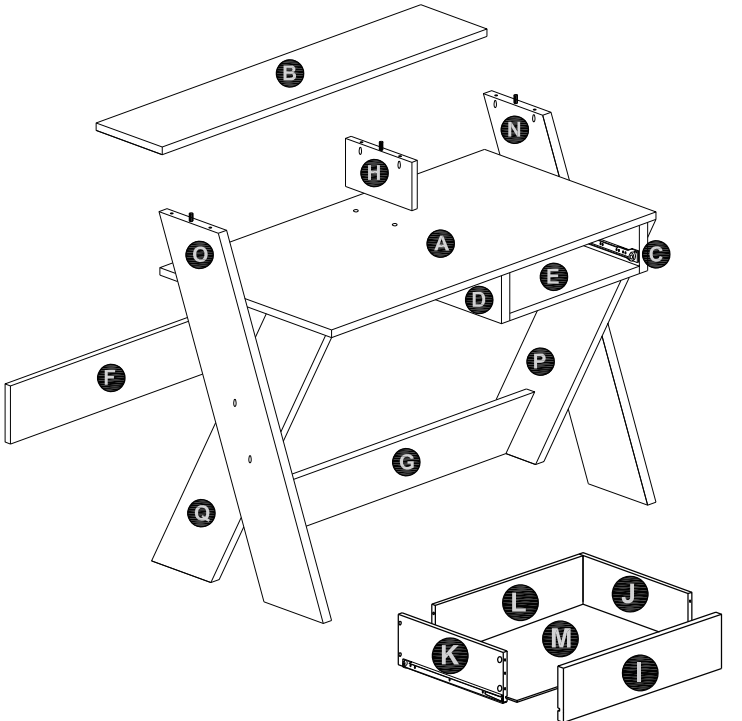
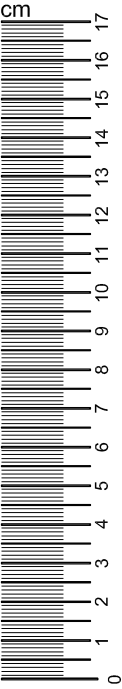
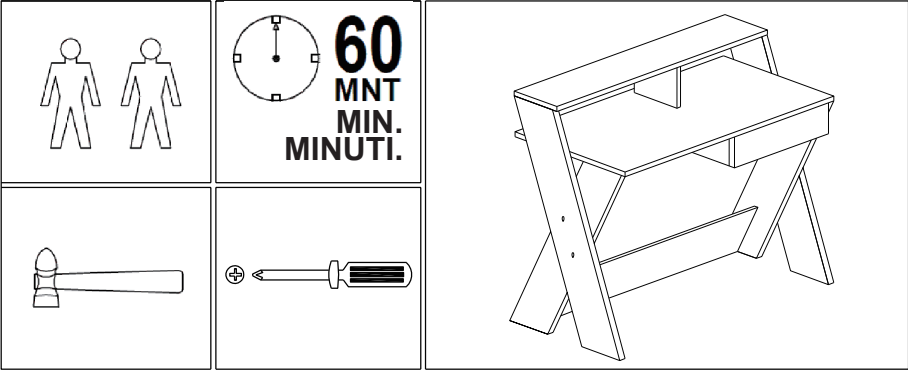
- ⚠ Si prega di leggere attentamente tutte le istruzioni.
- ⚠ Conservare le istruzioni per riferimento futuro.
- ⚠ Separare e contare tutte le parti e gli accessori.
- ⚠ Leggere attentamente ogni passo e seguire l'ordine corretto.
- ⚠ Si consiglia, ove possibile, di assemblare tutti gli articoli vicino alla zona in cui verranno posti in uso, per evitare di spostare inutilmente il prodotto una volta assemblato.
- ⚠ Posizionare sempre il prodotto su una superficie piana, stabile.
- ⚠ Tenere tutte le piccole parti e i materiali di imballaggio di questo prodotto lontano dalla portata di neonati e bambini, in quanto possono costituire un serio pericolo di soffocamento.

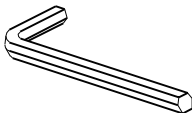
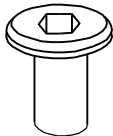

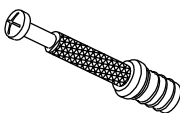

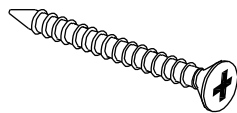

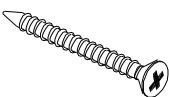
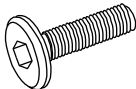
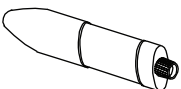

PL



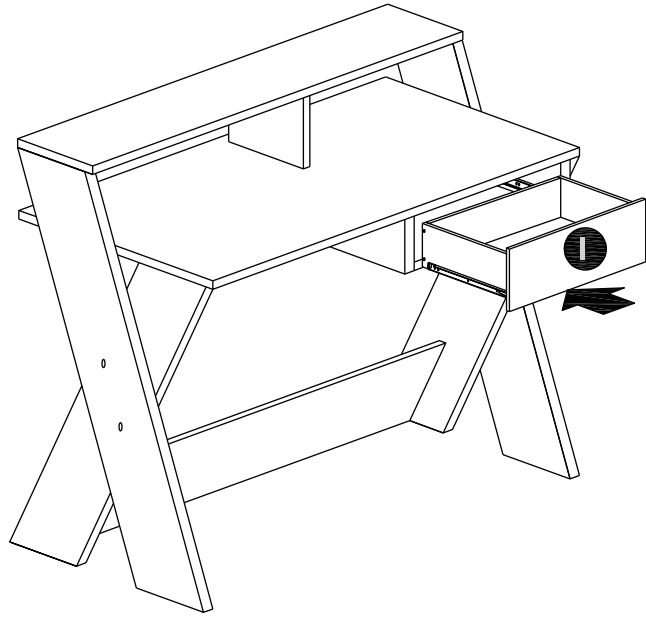
Zanim Zacziesz

- ⚠ Zapoznaj się z instrukcją.
- ⚠ Zachowaj instrukcję do wglądu.
- ⚠ Posortuj części i upewnij się, że zestaw jest kompletny.
- ⚠ Zapoznaj się ze sposobem montażu i postępuj zgodnie z instrukcją.
- ⚠ Zalecamy, aby montaż odbywał się możliwie najbliżej miejsca docelowego położenia produktu, aby uniknąć niepotrzebnego przesuwania.
- ⚠ Upewnij się, że produkt znajdzie się na płaskiej i stabilnej powierzchni.
- ⚠ Upewnij się, że materiały wykorzystane podczas pakowania produktu, oraz jego elementy znajdują się poza zasięgiem dzieci.

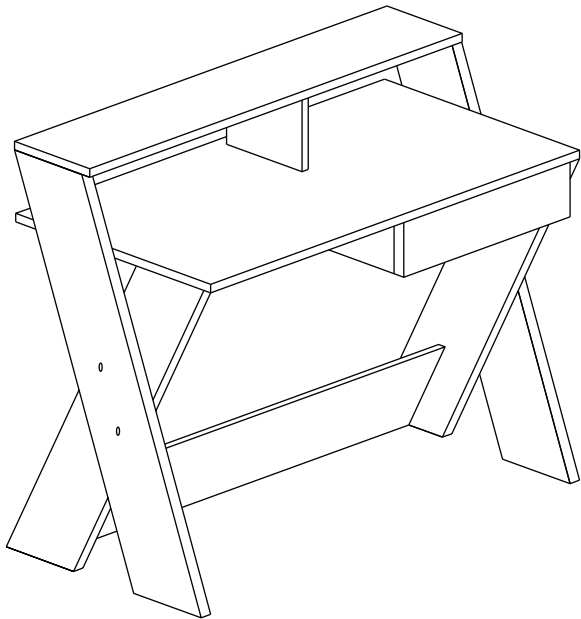


<p>1 x2</p>  <p>M4</p>	<p>2 x4</p>  <p>M6×15mm</p>	<p>3 x32</p>  <p>12mm</p> <p>Dia/Durchmesser /Diámetro/Diametro/ Średnica 15mm</p>
<p>4 x34</p>  <p>M6.5×32mm</p>	<p>5 x22</p>  <p>Dia/Durchmesser /Diámetro/Diametro/ Średnica 6×30mm</p>	<p>6 x6</p>  <p>M8×38mm</p>
<p>7 x2</p>  <p>9mm</p> <p>Dia/Durchmesser /Diámetro/Diametro/ Średnica 15mm</p>	<p>8 x4</p>  <p>M3.5×25 mm</p>	<p>9 x4</p>  <p>M6×25 mm</p>
<p>10 x1</p>  <p>Glue/Kleber/Colle/ Pegamento/Colła/Klej 10cc</p>	<p>11 x30</p>  <p>Sticker Cover/Aufkleber Abdeckung/ Couverture d'autocollants/ Cubierta adhesiva/Copertina Adesiva/ Zaślepka Dia. 17mm</p>	

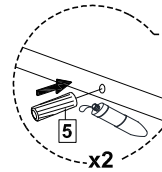
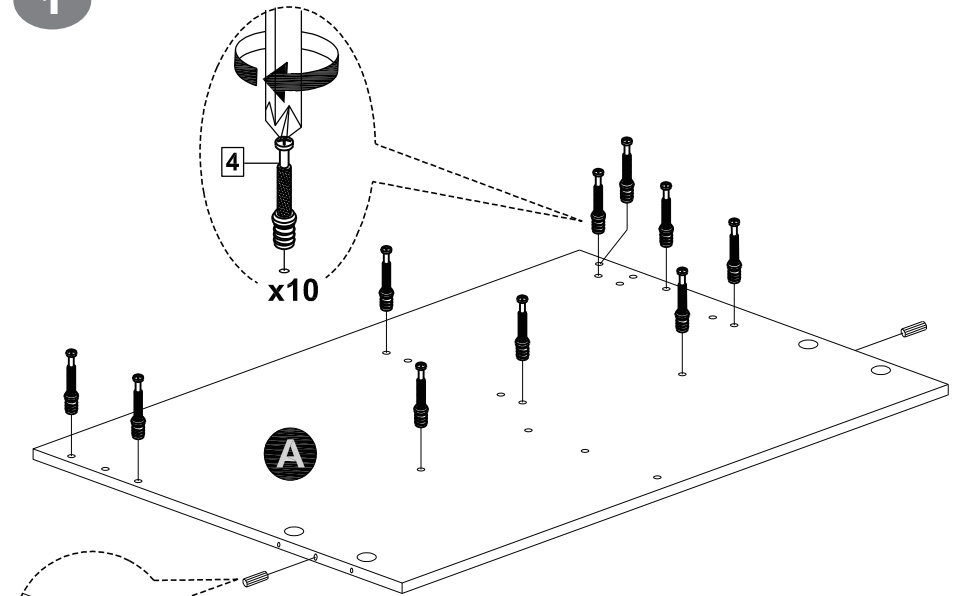
24






25

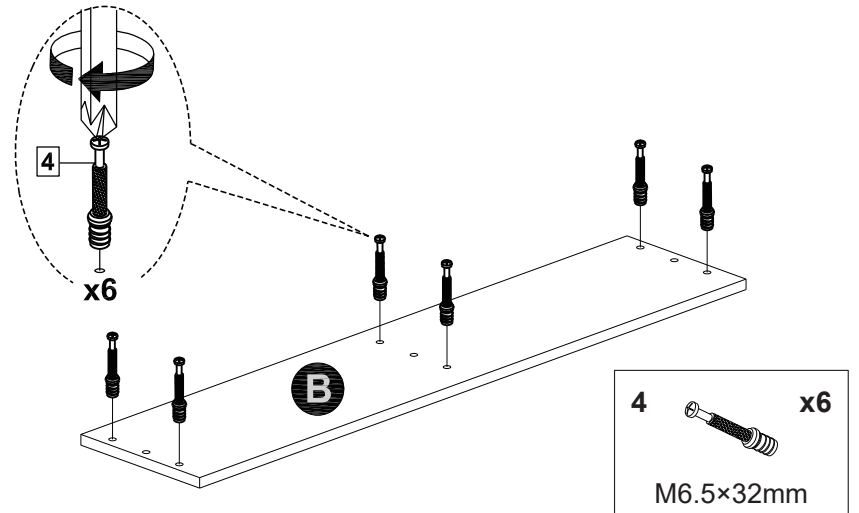


1



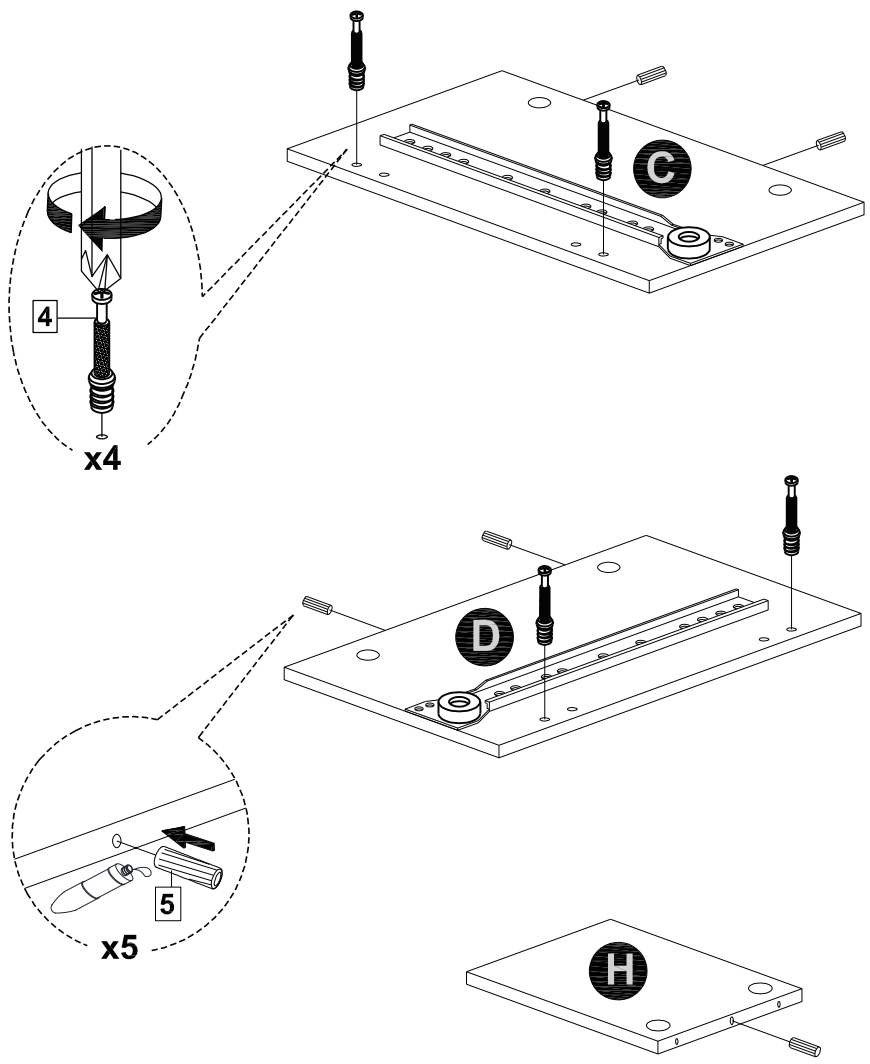
4	x10	5	x2	10	x1
					
M6.5×32mm		Dia/Durchmesser /Diámetro/Diametro/ Šrednica 6×30mm		Glue/Kleber/Colle/ Pegamento/Colla/Klej 10cc	




2



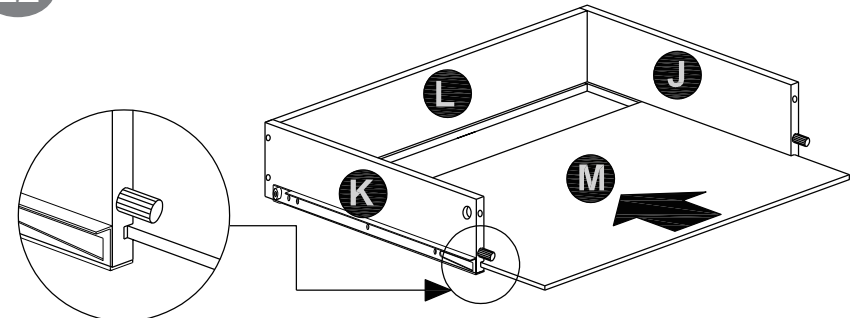
4	x6
	
M6.5×32mm	

3

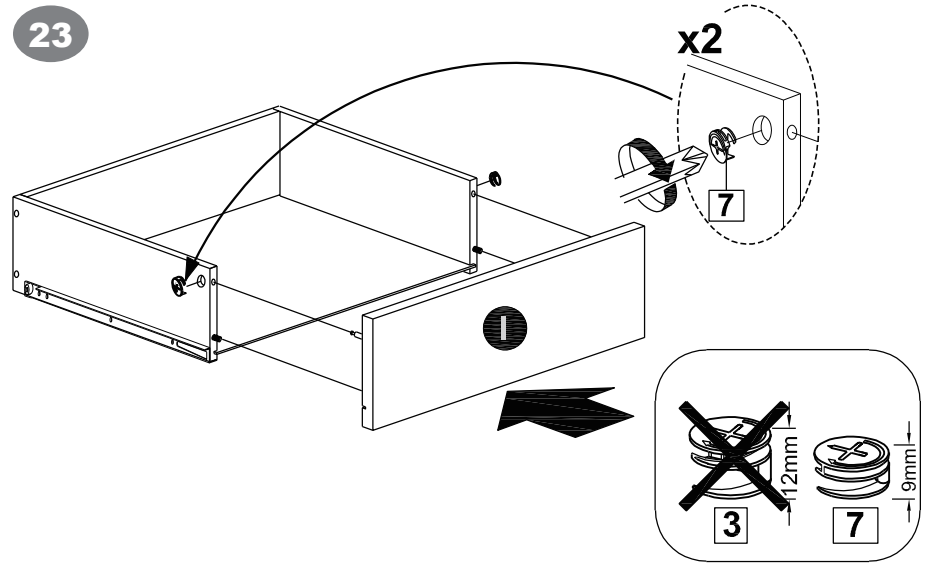



<p>4 x4</p>  <p>M6.5×32mm</p>	<p>5 x5</p>  <p>Dia/Durchmesser /Diámetro/Diametro/ Šrednica 6×30mm</p>	<p>10 x1</p>  <p>Glue/Kleber/Colle/ Pegamento/Cola/Klej 10cc</p>
---	---	--

22

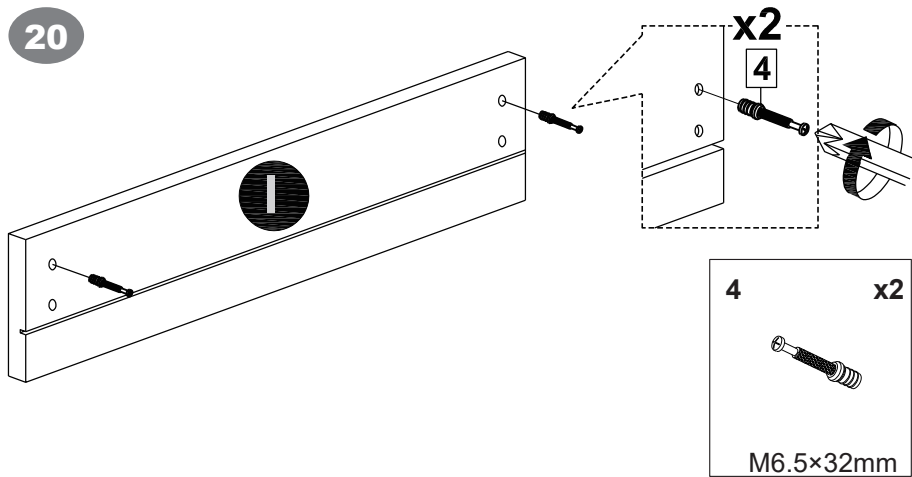


23

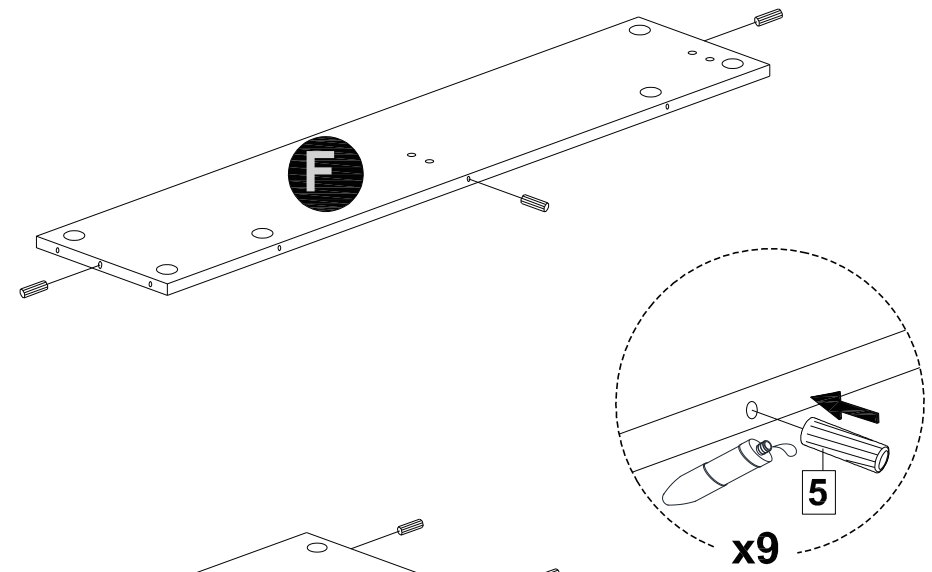


<p>7 x2</p>  <p>Dia/Durchmesser /Diámetro/Diametro/ Šrednica 15mm</p>

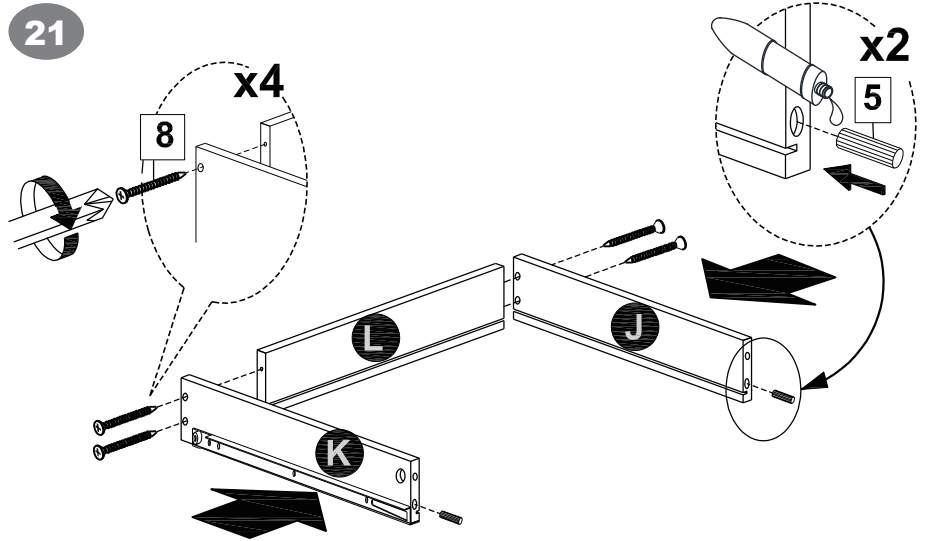
20

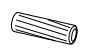




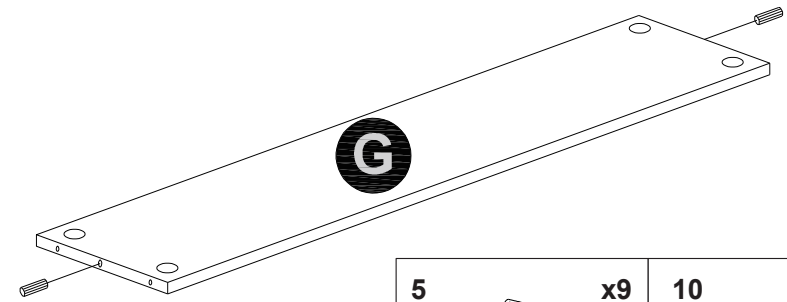
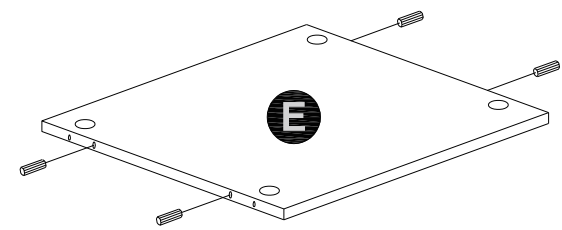
4

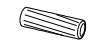



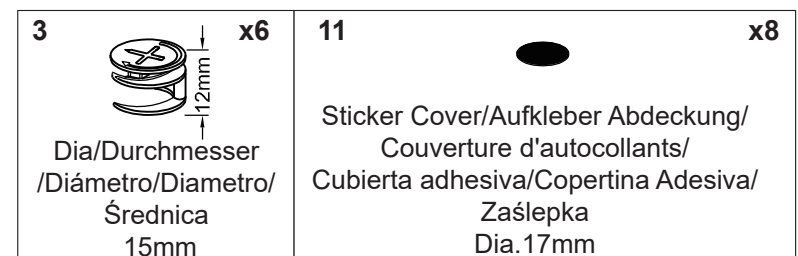
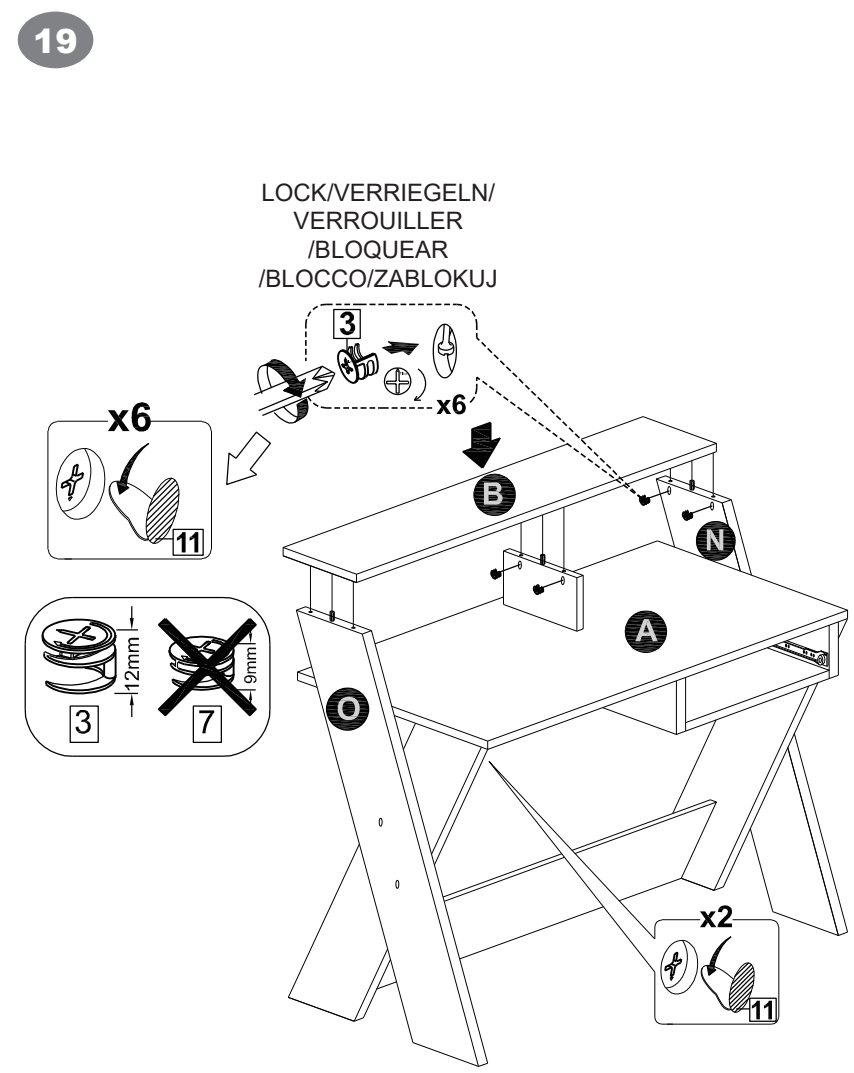
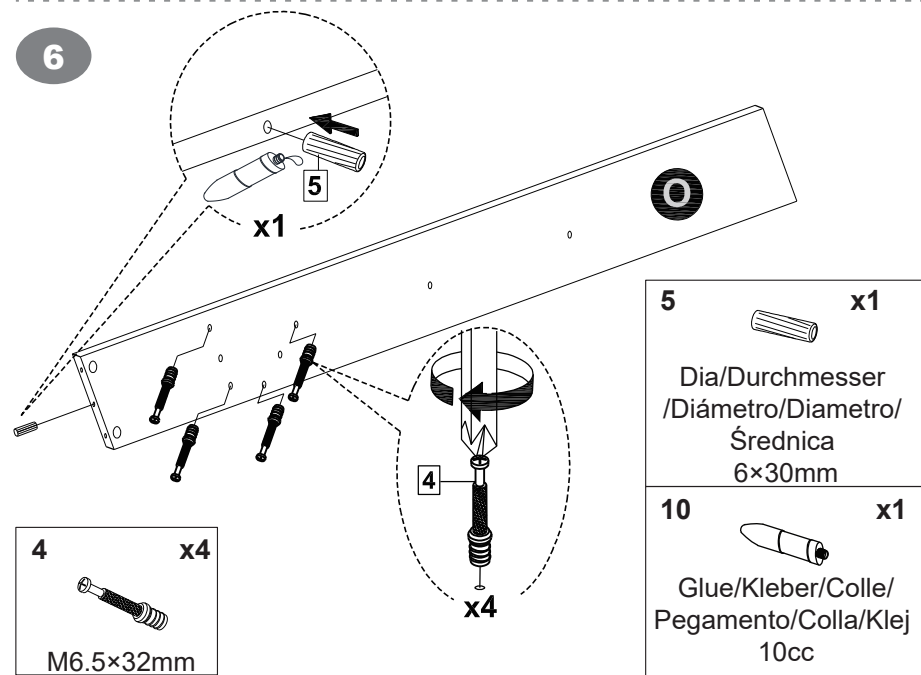
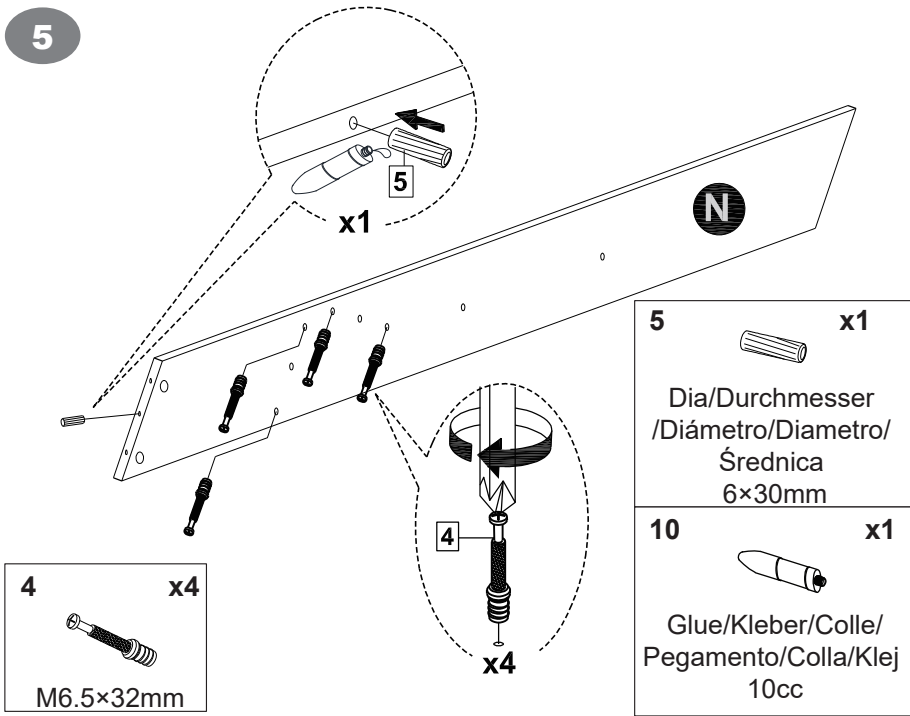
21

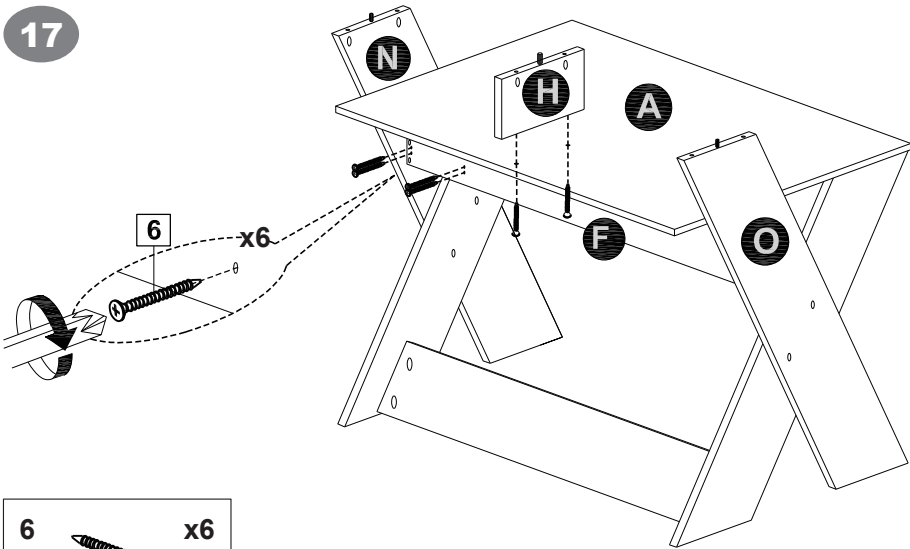



5		x2	8		x4	10		x1
Dia/Durchmesser /Diámetro/Diametro/ Šrednica 6x30mm			M3.5x25 mm			Glue/Kleber/Colle/ Pegamento/Colle/Klej 10cc		

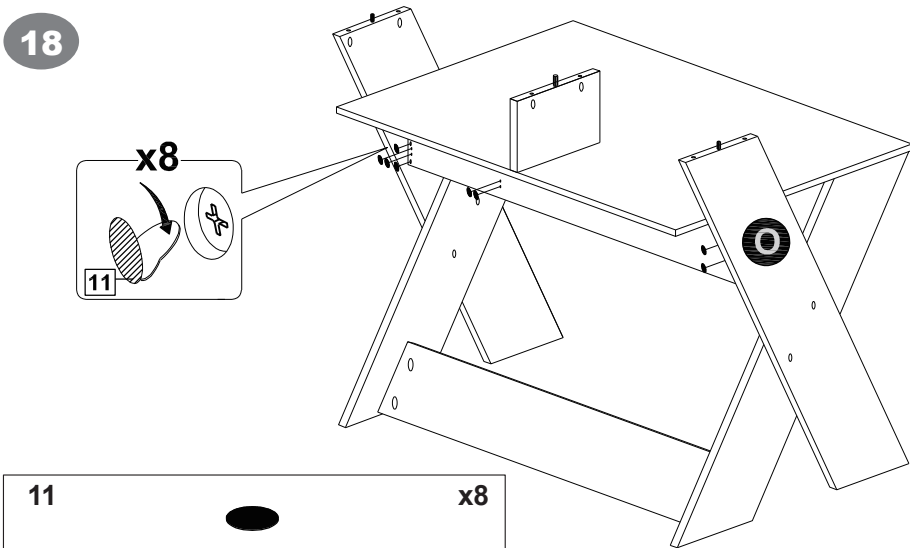


5		x9	10		x1
Dia/Durchmesser /Diámetro/Diametro/ Šrednica 6x30mm			Glue/Kleber/Colle/ Pegamento/Colle/Klej 10cc		

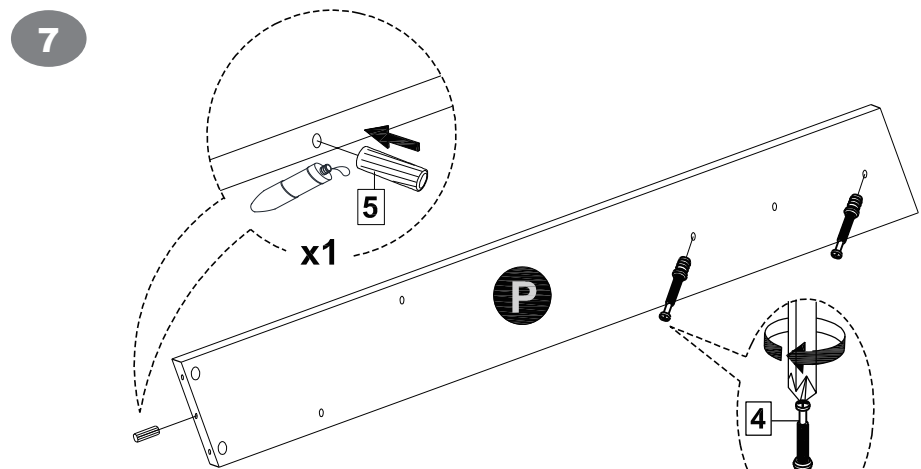



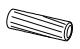



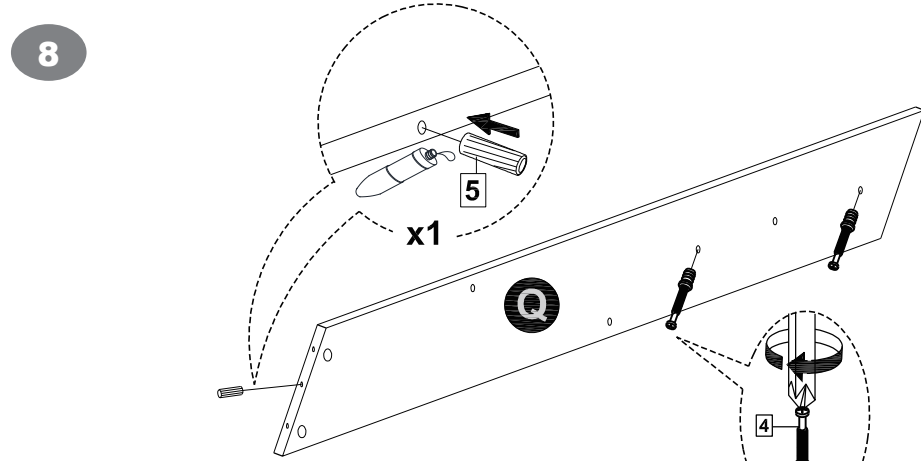
6		x6
M8×38mm		






11		x8
Sticker Cover/Aufkleber Abdeckung/ Couverture d'autocollants/ Cubierta adhesiva/Copertina Adesiva/ Zaślepka Dia. 17mm		

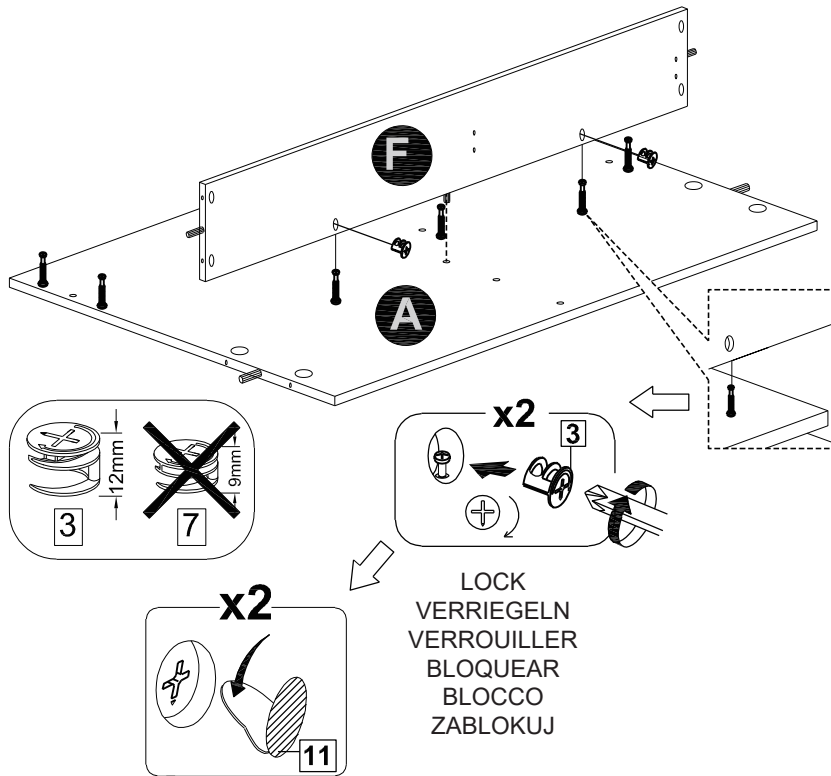




4		x2	5		x1	10		x1
M6.5×32mm		Dia/Durchmesser /Diámetro/Diametro/ Średnica		6×30mm		Glue/Kleber/Colle/ Pegamento/Collo/Klej		10cc



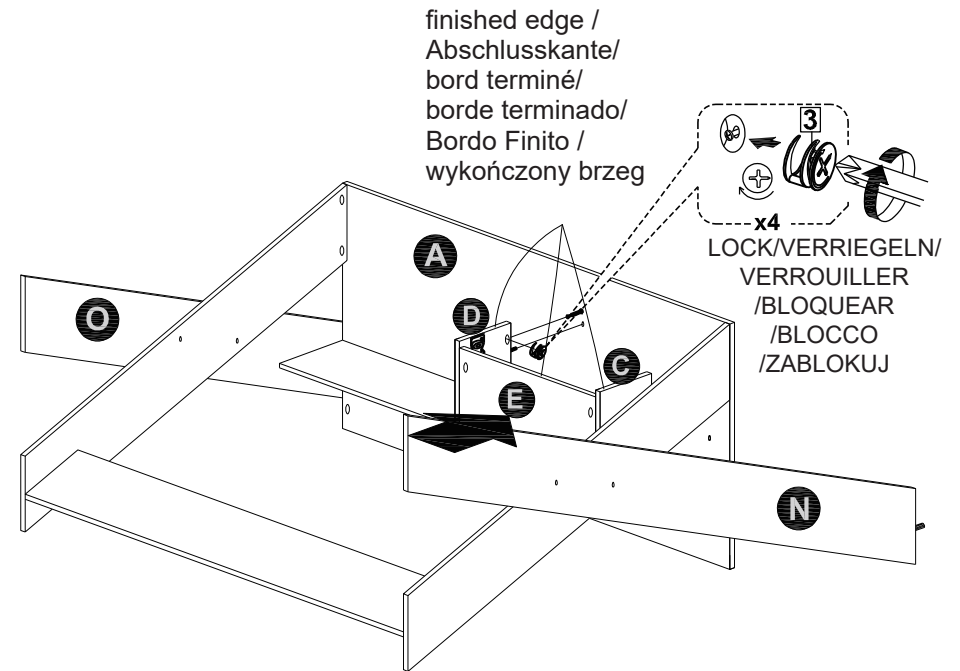
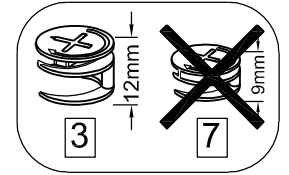
4		x2	5		x1	10		x1
M6.5×32mm		Dia/Durchmesser /Diámetro/Diametro/ Średnica		6×30mm		Glue/Kleber/Colle/ Pegamento/Collo/Klej		10cc

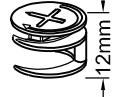
9



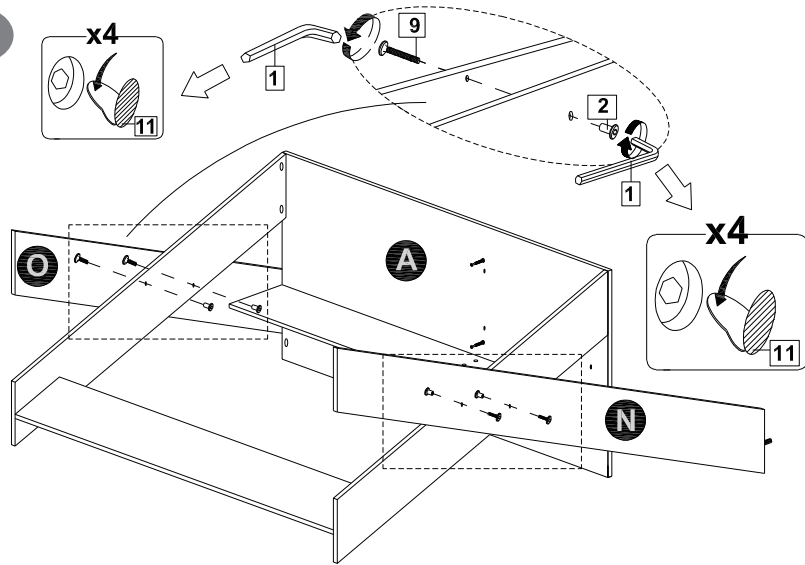
<p>3</p>  <p>x2</p> <p>Dia/Durchmesser /Diámetro/Diametro/ Średnica 12mm</p>	<p>11</p>  <p>x2</p> <p>Sticker Cover/Aufkleber Abdeckung/ Couverture d'autocollants/ Cubierta adhesiva/Copertina Adesiva/ Zaślepka Dia.17mm</p>
--	---

16



<p>3</p>  <p>x4</p> <p>Dia/Durchmesser /Diámetro/Diametro/ Średnica 12mm</p>
--

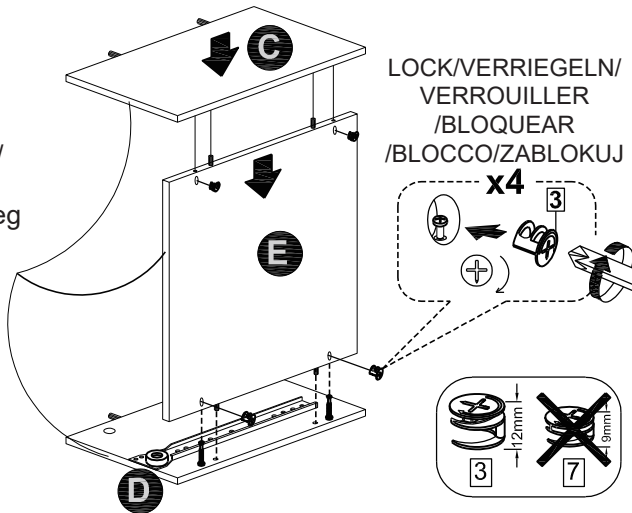
14



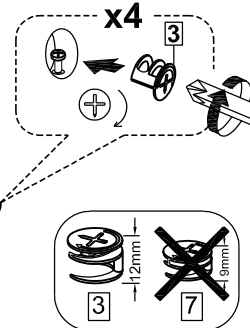
1	x2	2	x4	9	x4	11	x8
M4		M6×15mm		M6×25 mm		Sticker Cover/Aufkleber Abdeckung/ Couverture d'autocollants/ Cubierta adhesiva/Copertina Adesiva/ Zaślepka Dia.17mm	

15

finished edge /
Abschlusskante/
bord terminé/
borde terminado/
Bordo Finito /
wykończony brzeg



LOCK/VERRIEGELN/
VERROUILLER
/BLOQUEAR
/BLOCCO/ZABLOKUJ

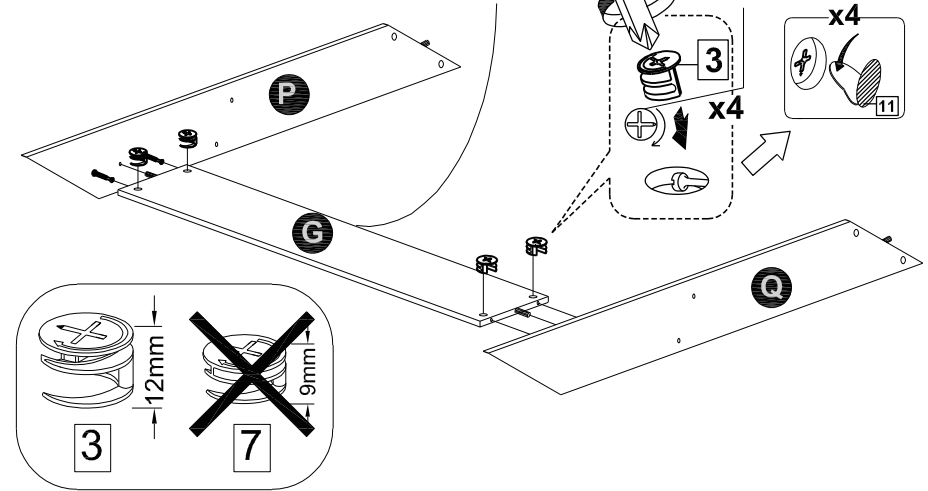


3	x4	
Dia/Durchmesser /Diámetro/Diametro/ Średnica 15mm		

10

finished edge /
Abschlusskante/
bord terminé/
borde terminado/
Bordo Finito /
wykończony brzeg

LOCK
VERRIEGELN
VERROUILLER
BLOQUEAR
BLOCCO
ZABLOKUJ



Turning this set before fixing with panel (A)

/Drehen Sie dieses Set vor der Befestigung mit der Platte (A)

/Tournez cet ensemble avant de le fixer avec le panneau (A).

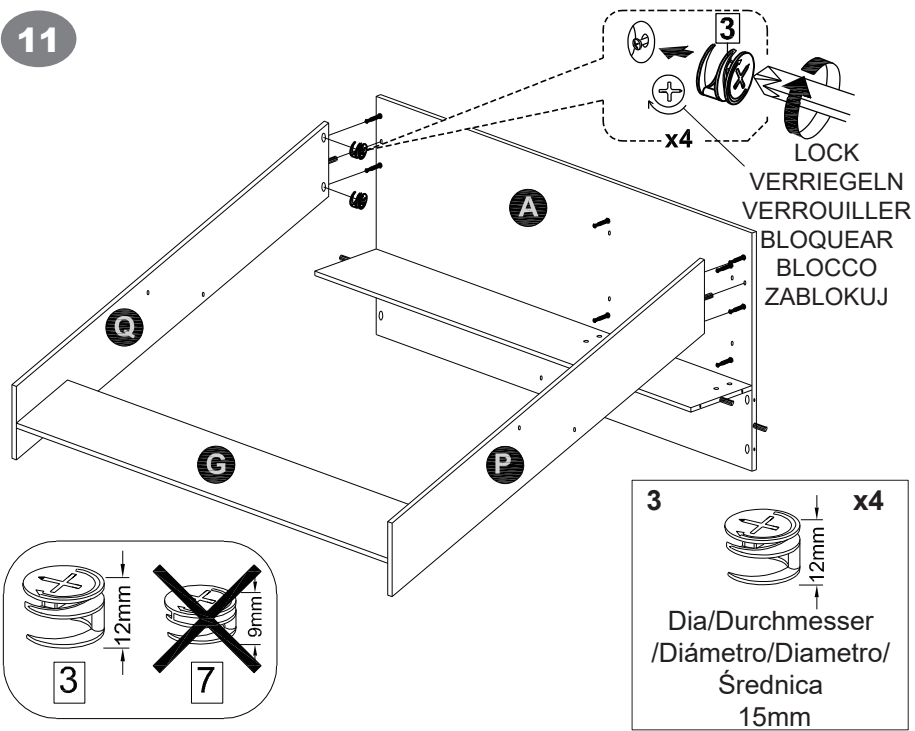
/Gire este conjunto antes de fijarlo con el panel (A)

/Ruotare questo set prima del fissaggio con il pannello (A)

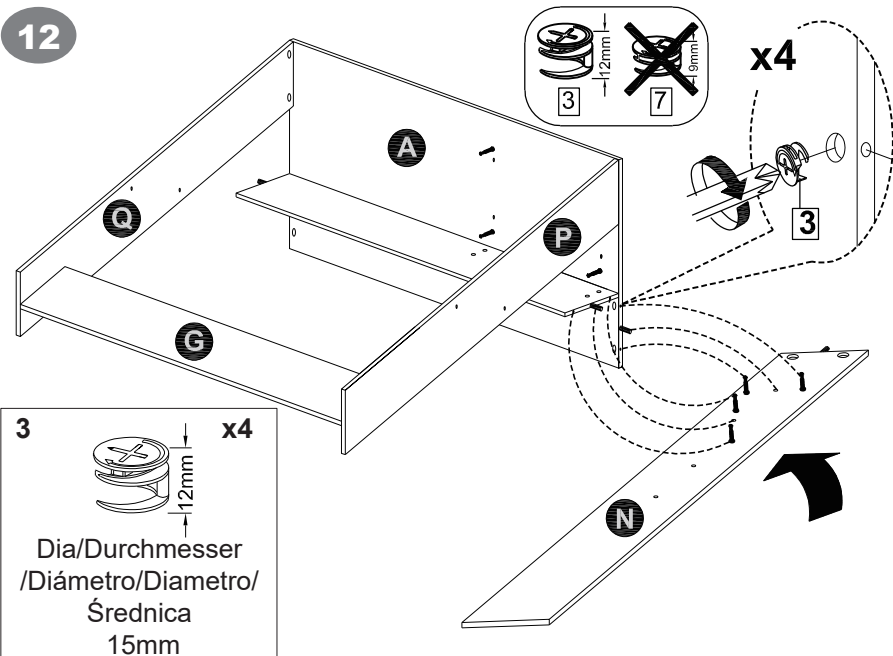
Obróć zestaw części przed zmontowaniem panelu (A).

3	x4		11	x4	
Dia/Durchmesser /Diámetro/Diametro/ Średnica 15mm			Sticker Cover/Aufkleber Abdeckung/ Couverture d'autocollants/ Cubierta adhesiva/Copertina Adesiva/ Zaślepka Dia.17mm		

11



12



13

