

Read this instruction carefully. See hardware and furniture part list for guidance. Be sure all parts are complete, before you assemble. Place all wooden furniture parts on a clean and flat soft surface to prevent from being scratched. Follow the figure to start assembling.

CAUTIONS : 1. Do not FULLY - TIGHTEN the nut or nut bolt until all nut or bolt is ready assembled.
2. Do not OVER - TIGHTEN the nut or bolt to avoid causing damages to the thread.
3. Keep all hardware parts out of reach of children.

NOTE : THE LIST AND QUANTITY SHOWN ARE FOR 1 UNIT ASSEMBLY.

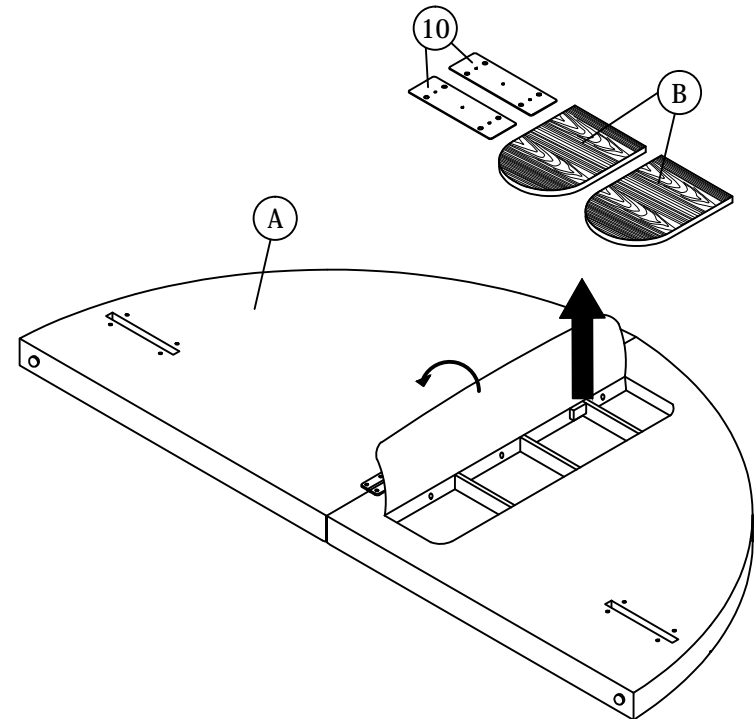
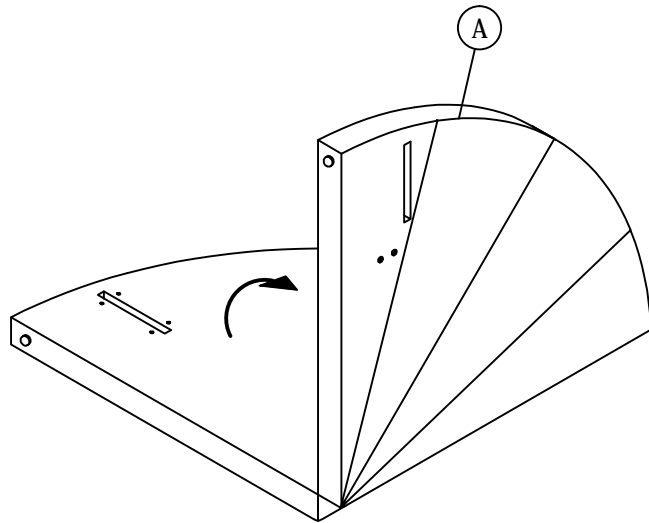
Tool needed : Screwdriver (not provider).

PART LIST		
ITEM	DESCRIPTION	QTY
A	HEADBOARD	1 PC
B	HEADBOARD PANEL	2 PCS
C	FOOTBOARD	1 PC
D	SIDE RAIL	2 PCS
E	CENTER RAIL	2 PCS
F	CENTER SUPPORT LEG	6 PCS
G	BED SLAT	1 SET
H	BED LEG	2 PCS

HARDWARE LIST		
ITEM	DESCRIPTION	QTY
1	JCBC BOLT M6 x 20mm	16 PCS
2	JCBC BOLT M6 x 35mm	2 PCS
3	JCBC BOLT M6 x 45mm	3 PCS
4	M6 FLAT WASHER	19 PCS
5	M6 SPRING WASHER	19 PCS
6	M8 FLAT WASHER	2 PCS
7	M8 SPRING WASHER	2 PCS
8	5/16 HEX NUT	2 PCS
9	LB 001 CONNER BRACKET	2 PCS
10	VMB 3172	2 PCS
11	SPANNER 13mm	1 PC
12	WOOD SCREW M4 X 20mm	2 PCS
13	WOOD SCREW M4 X 38mm	16 PCS
14	M4 ALLEN KEY (BALL SHAPE)	1 PC
15	M5 ALLEN KEY (BALL SHAPE)	1 PC

STEP 1

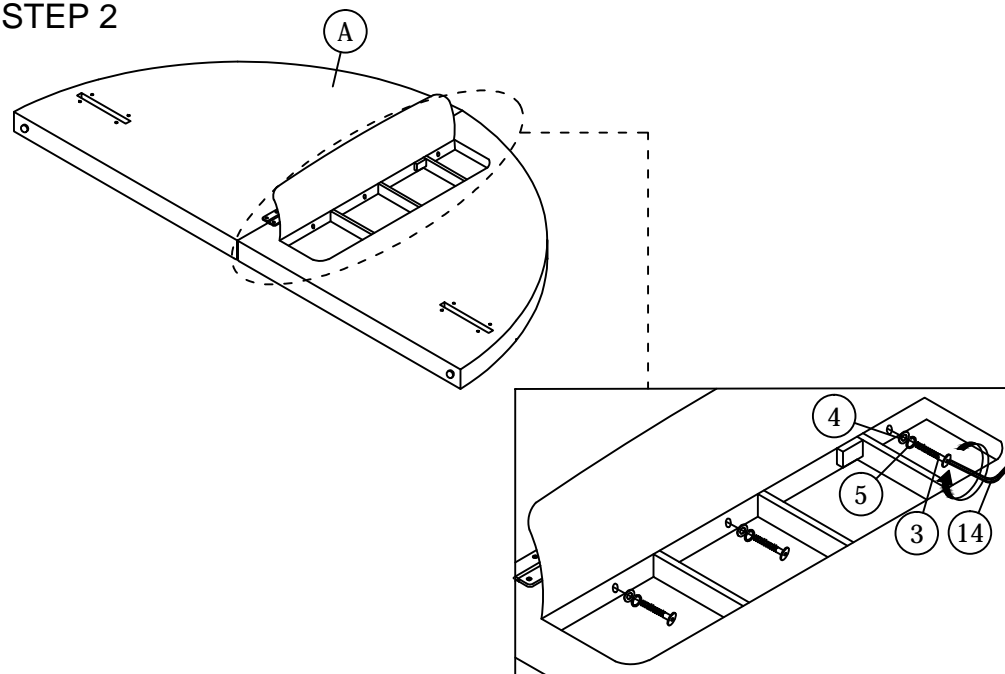
Take out HEADBOARD PANEL (B) & VMB3172 (10) for the HEADBOARD BACK (A).



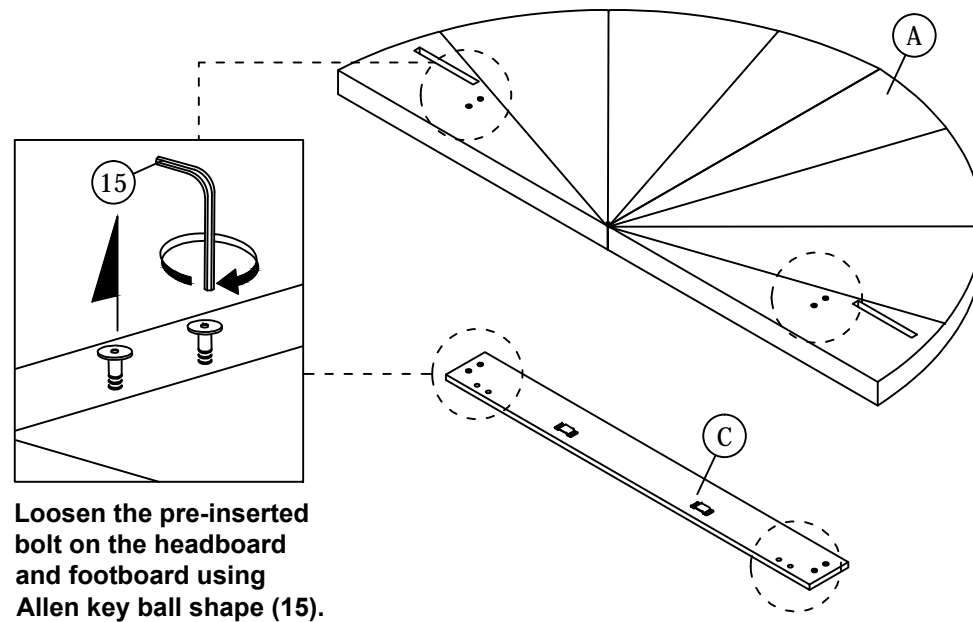
ASSEMBLY INSTRUCTIONS

2 OF 4

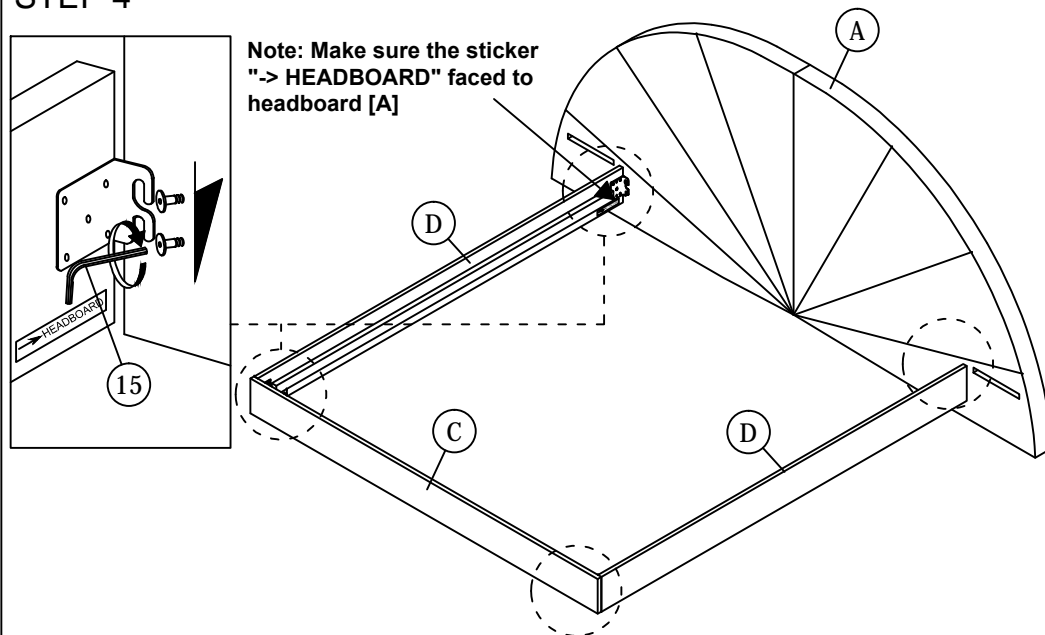
STEP 2



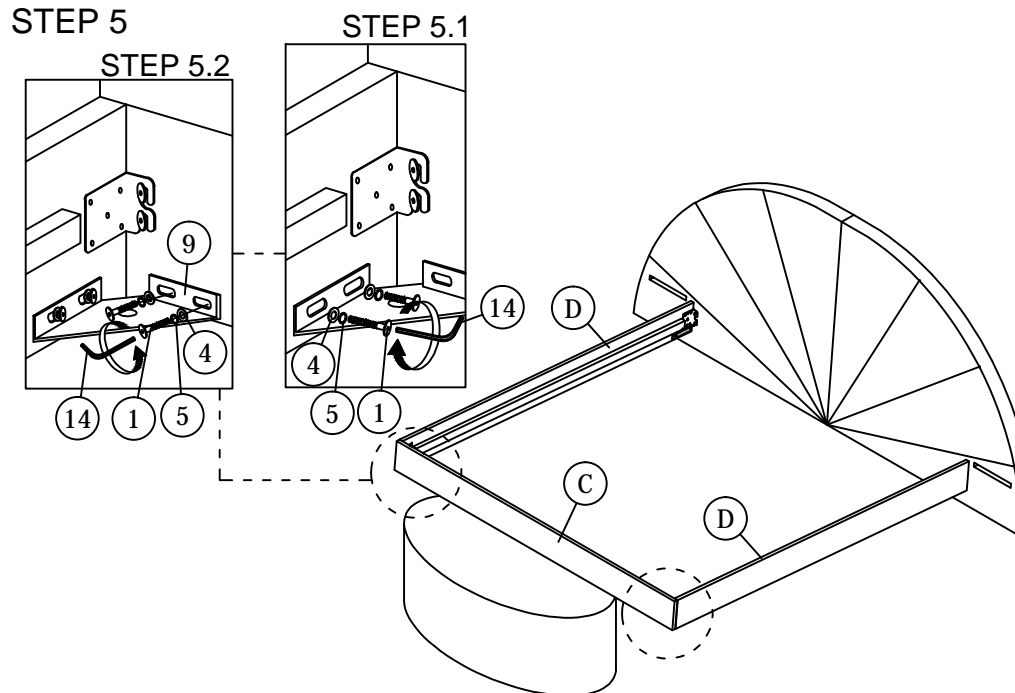
STEP 3



STEP 4



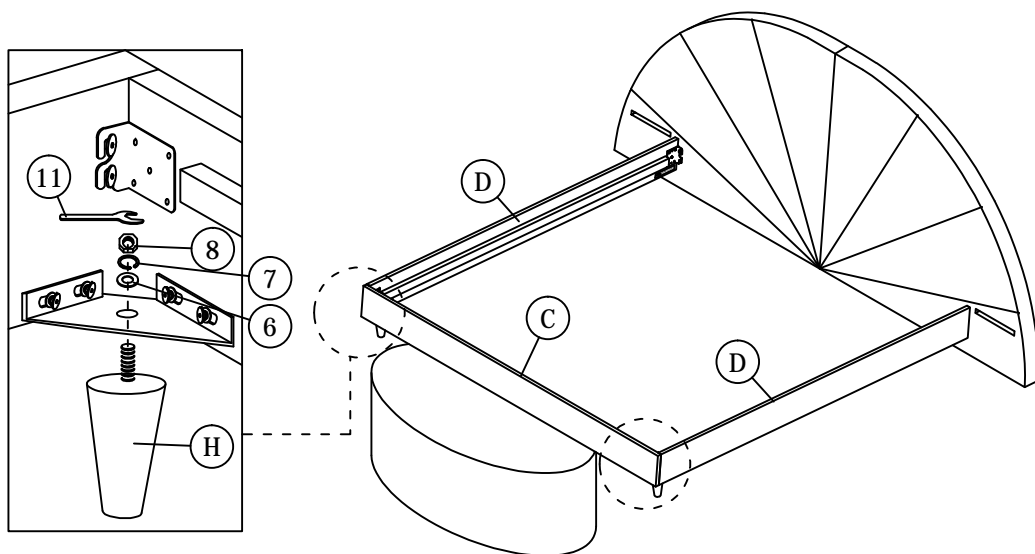
STEP 5



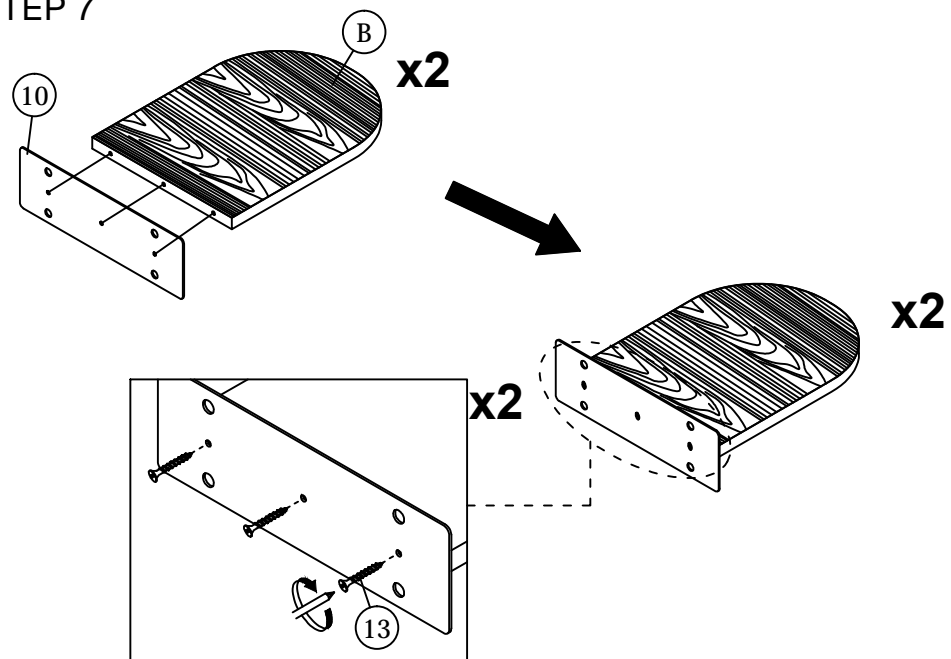
ASSEMBLY INSTRUCTIONS

3 OF 4

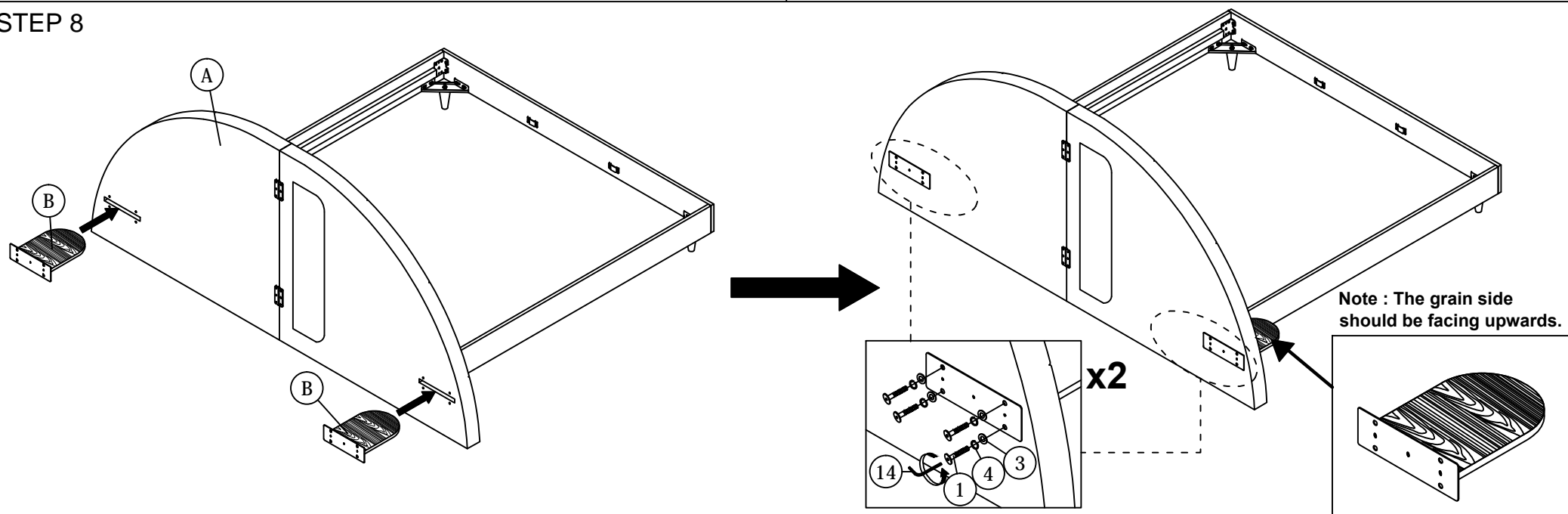
STEP 6



STEP 7



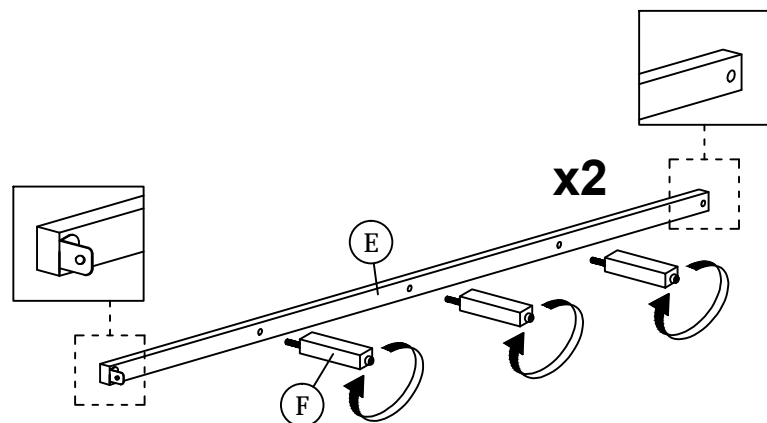
STEP 8



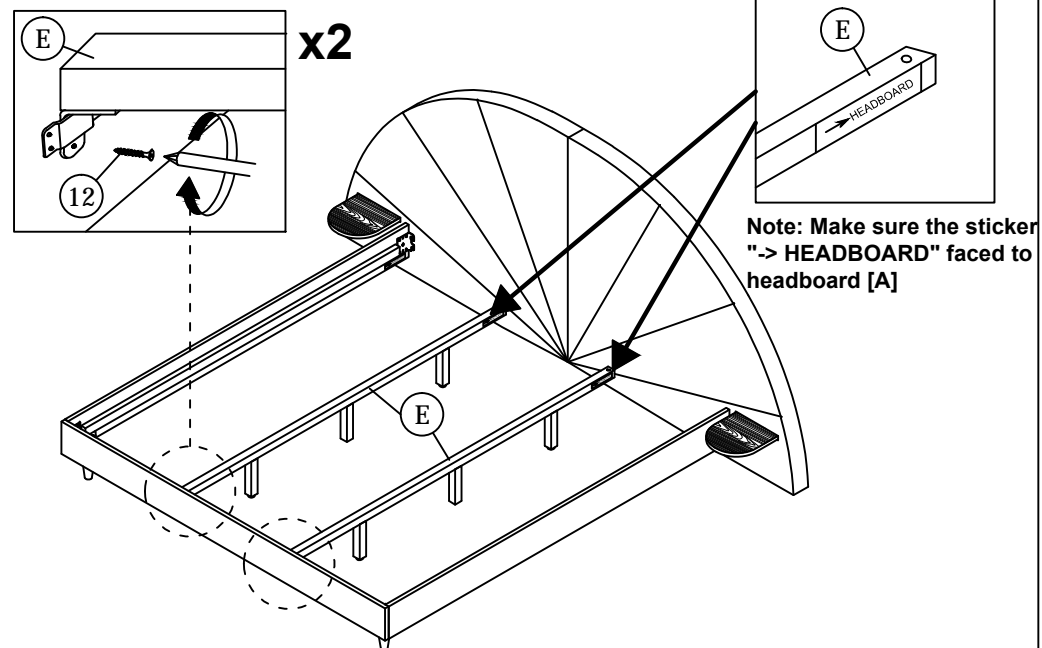
ASSEMBLY INSTRUCTIONS

4 OF 4

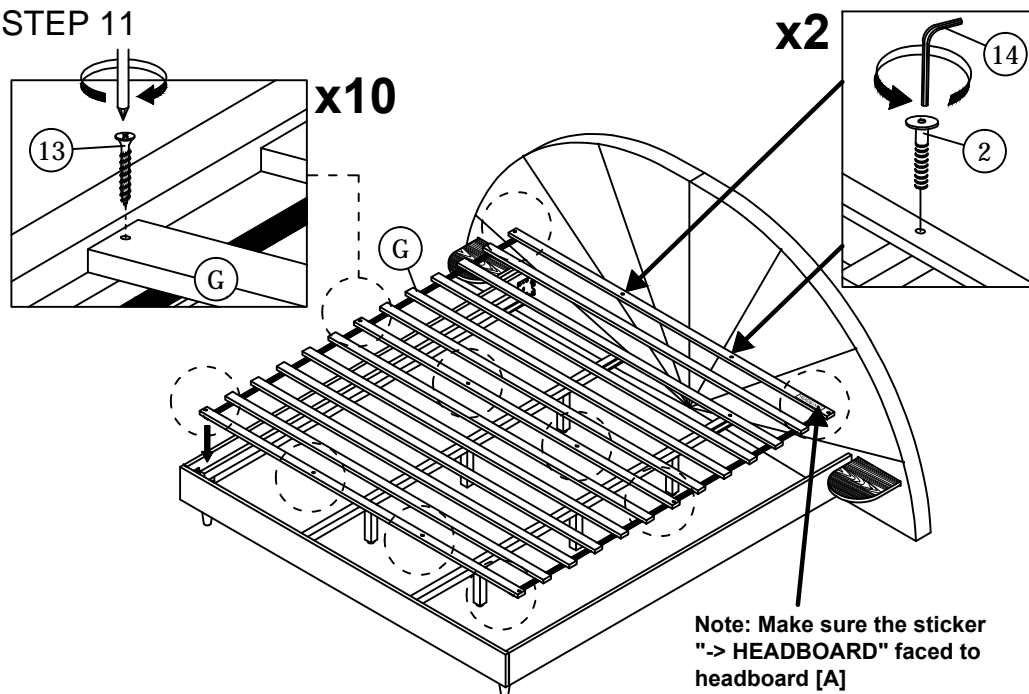
STEP 9



STEP 10



STEP 11



STEP 12

