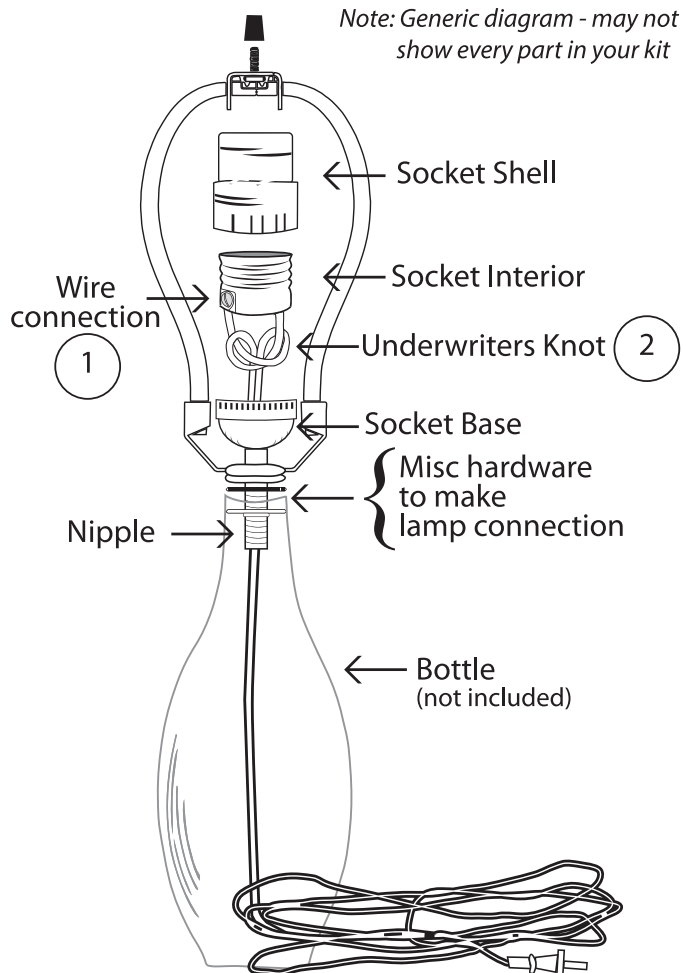


ASSEMBLY GUIDE FOR:

- MAKE-A-LAMP KIT
- MAKE-A-LAMP BOTTLE KIT
- MAKE-A-LAMP WINE BOTTLE KIT

• MAKE-A-LAMP KIT

Note: Generic diagram - may not show every part in your kit

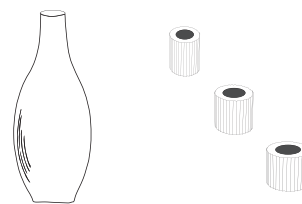


1 Loosen the terminal screws in the socket terminal. Identify the neutral wire by finding the ridge or ribbing on the insulation. Connect this to the silver screw by positioning the copper wires under the head of the terminal screw in a clockwise direction. Then connect the other wire which has the smooth coating to the brass screw.

• MAKE-A-LAMP BOTTLE KIT

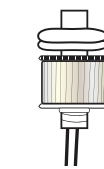
Step 1.

Choose bottle and select rubber adapter that will fit into the bottle



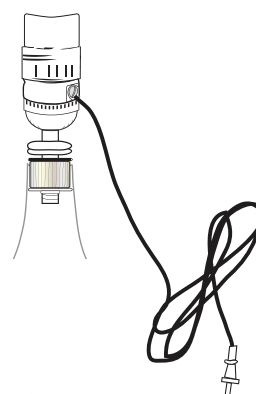
Step 2.

Install correct sized rubber adapter into the socket stem



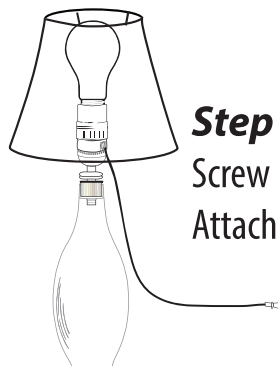
Step 3.

Insert socket and rubber adapter into bottle opening

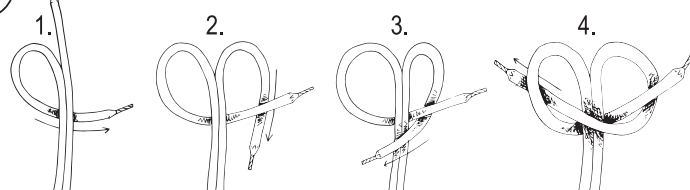


Step 4.

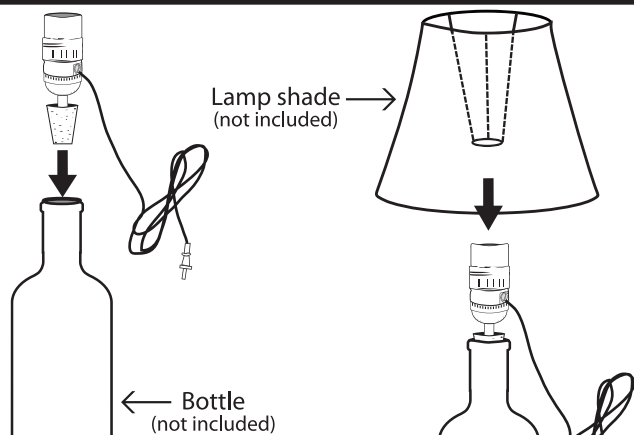
Screw in light bulb
Attach lamp shade and plug in



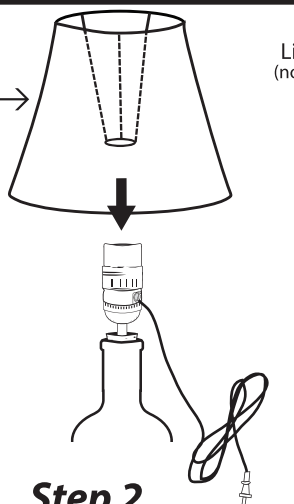
2 Tie an underwriters knot, as shown.



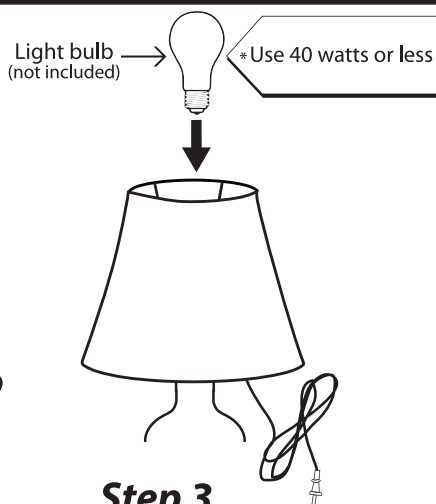
• MAKE-A-LAMP WINE BOTTLE KIT



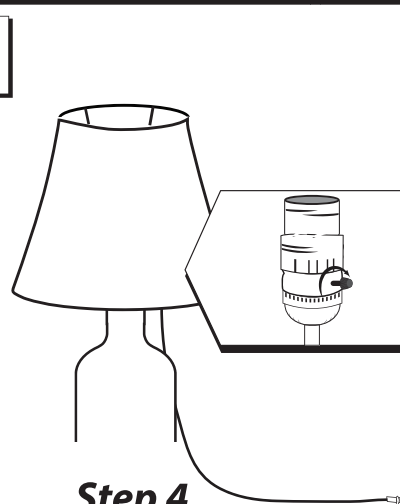
Step 1.
Insert the cork into the wine bottle



Step 2.
Add the lamp shade to the light socket



Step 3.
Screw the light bulb into the socket



Step 4.
Plug the lamp in, turn switch to turn lamp on