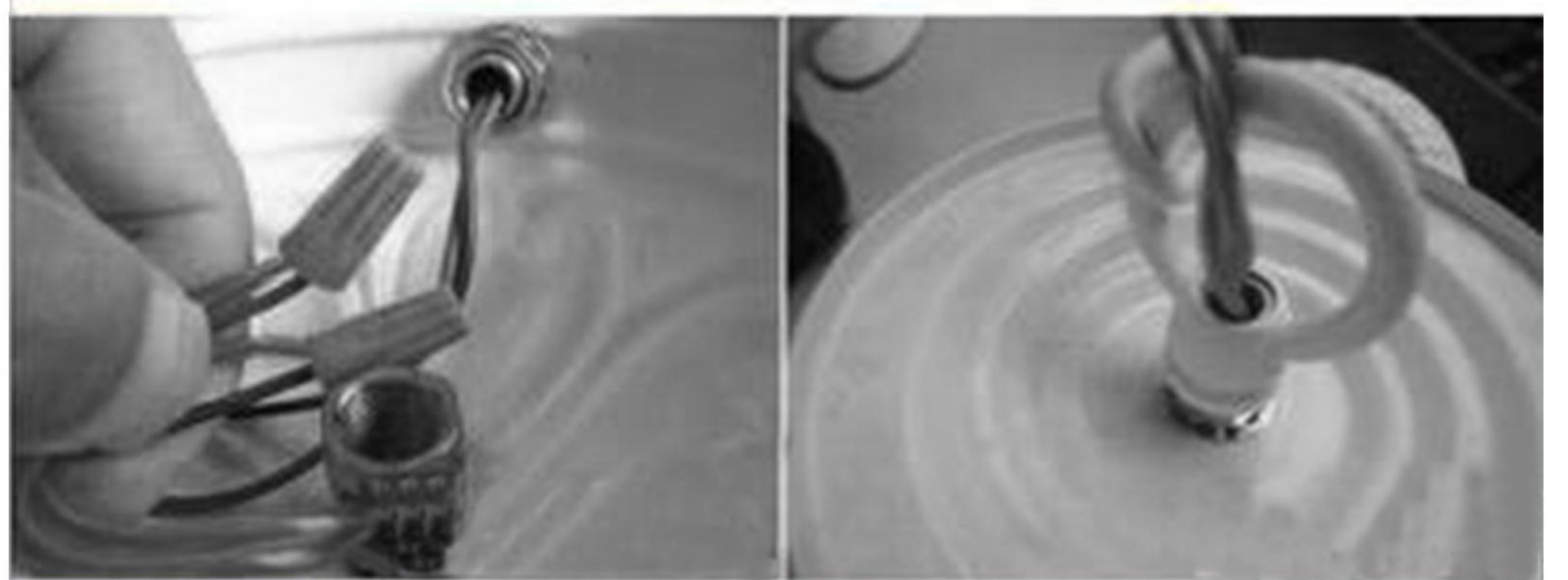
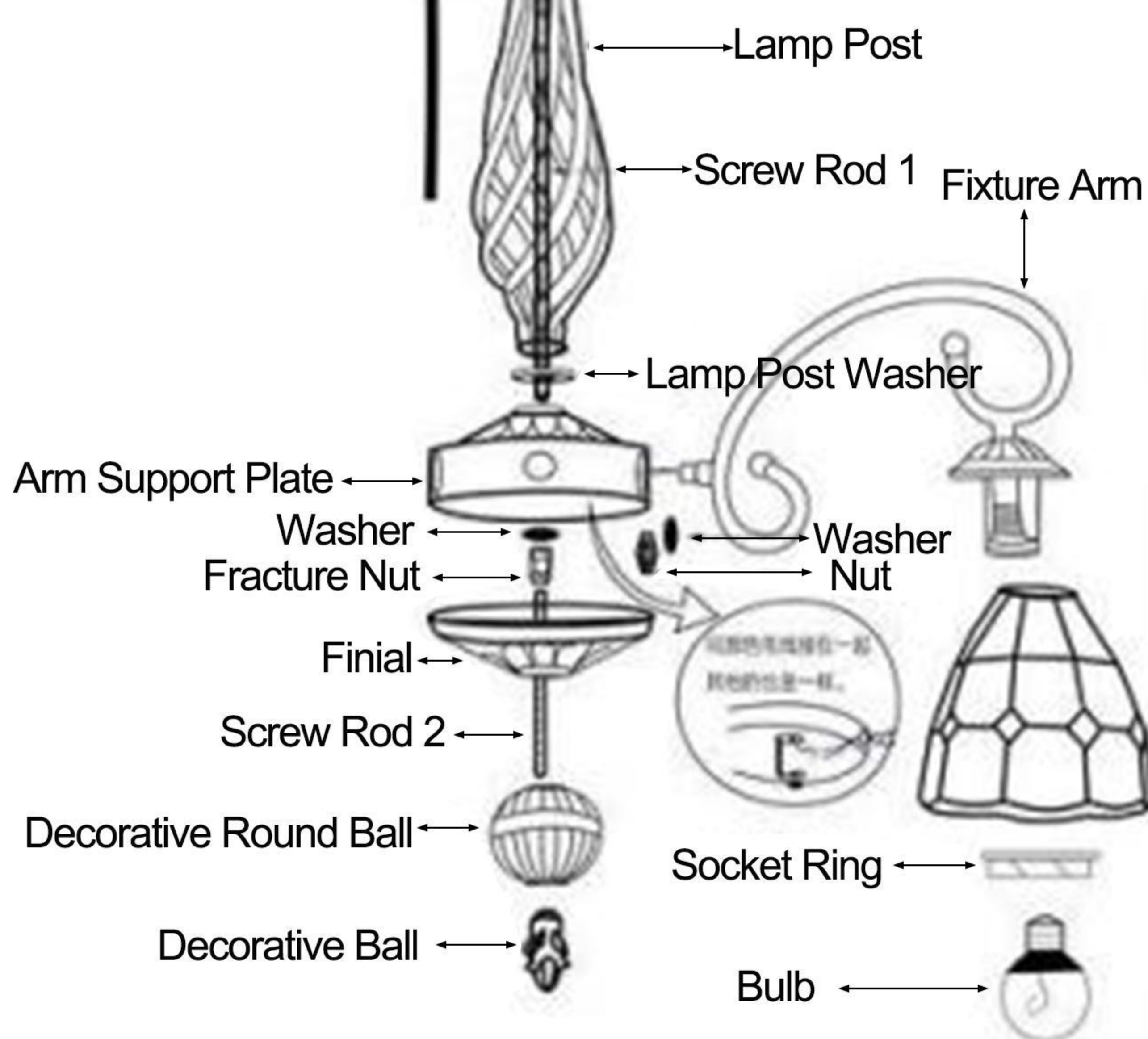
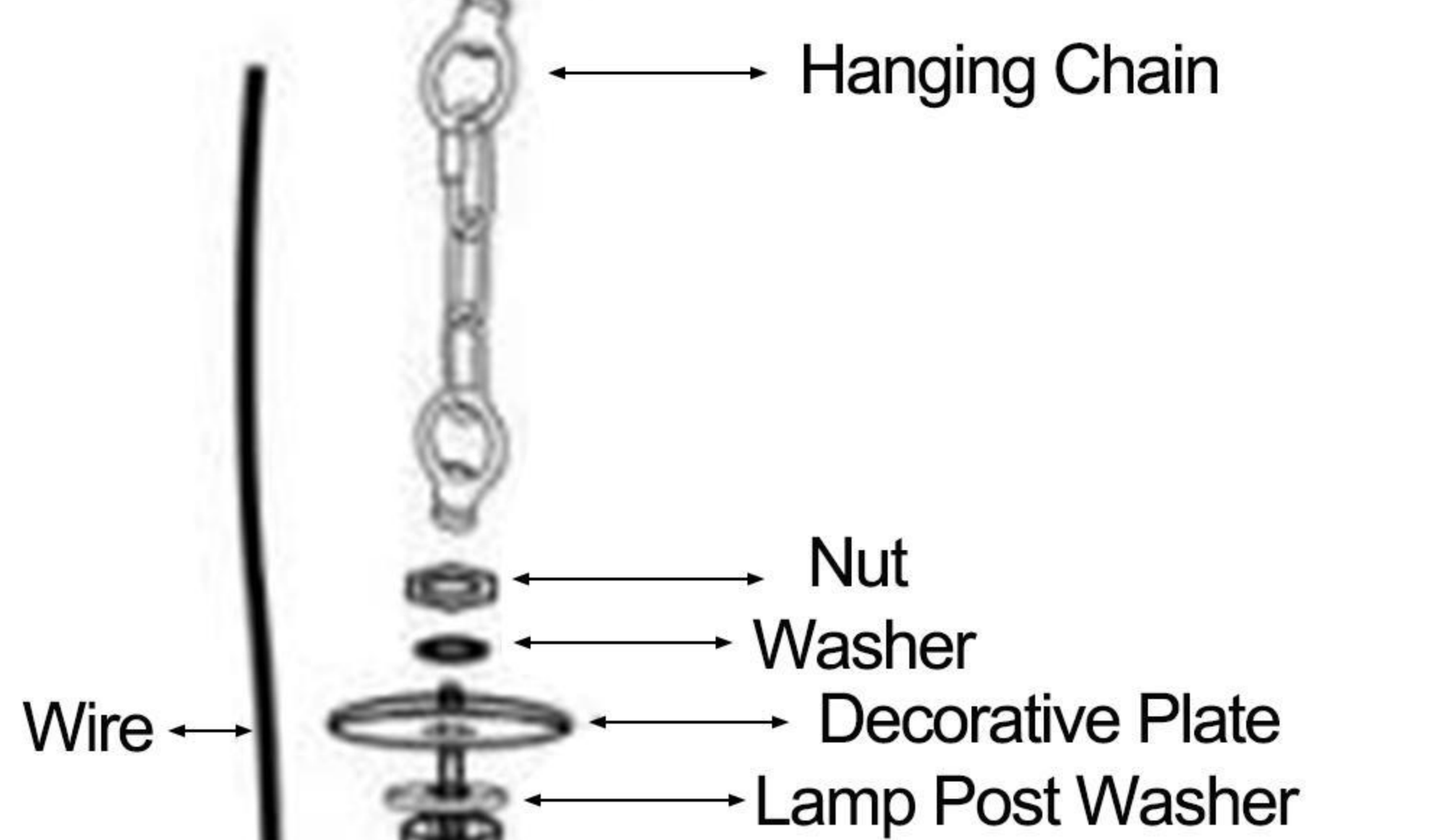
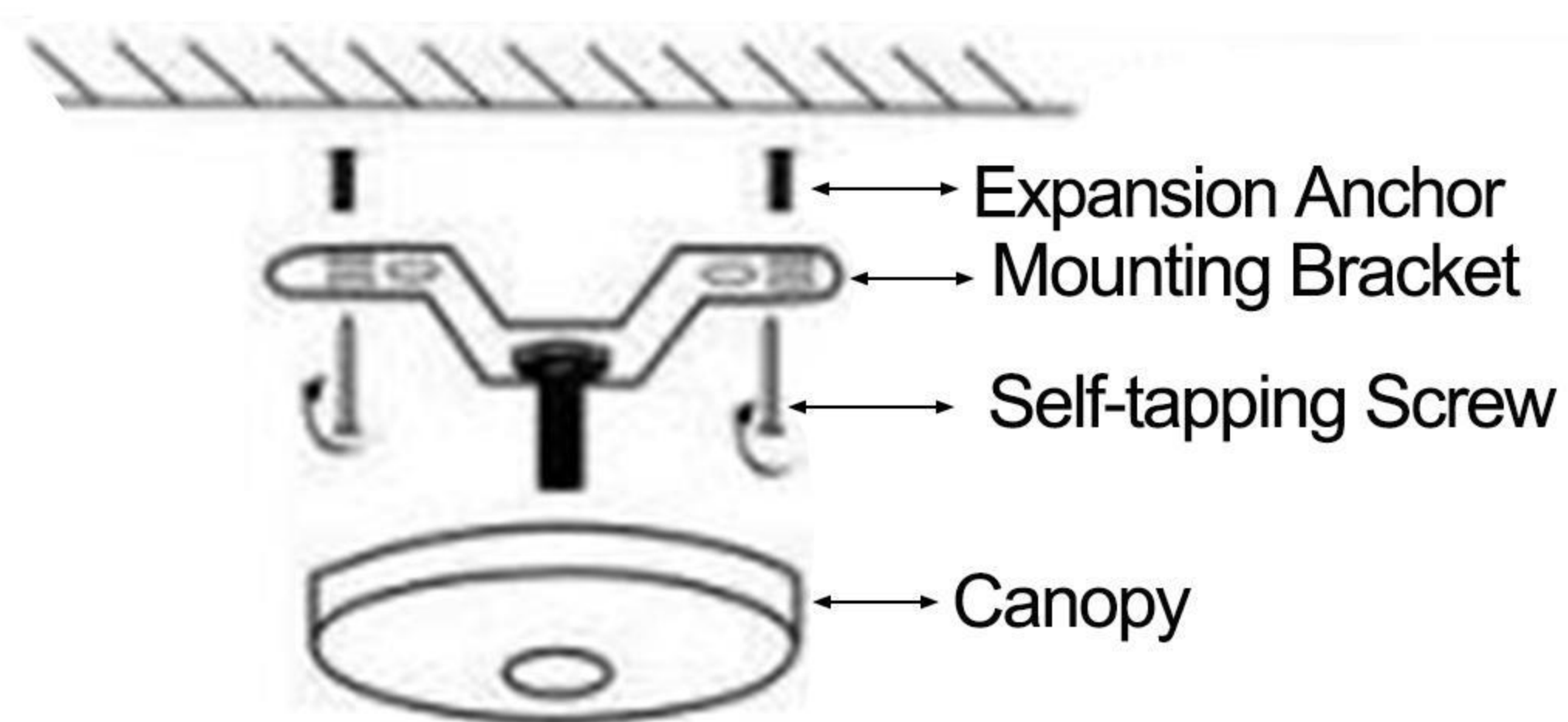
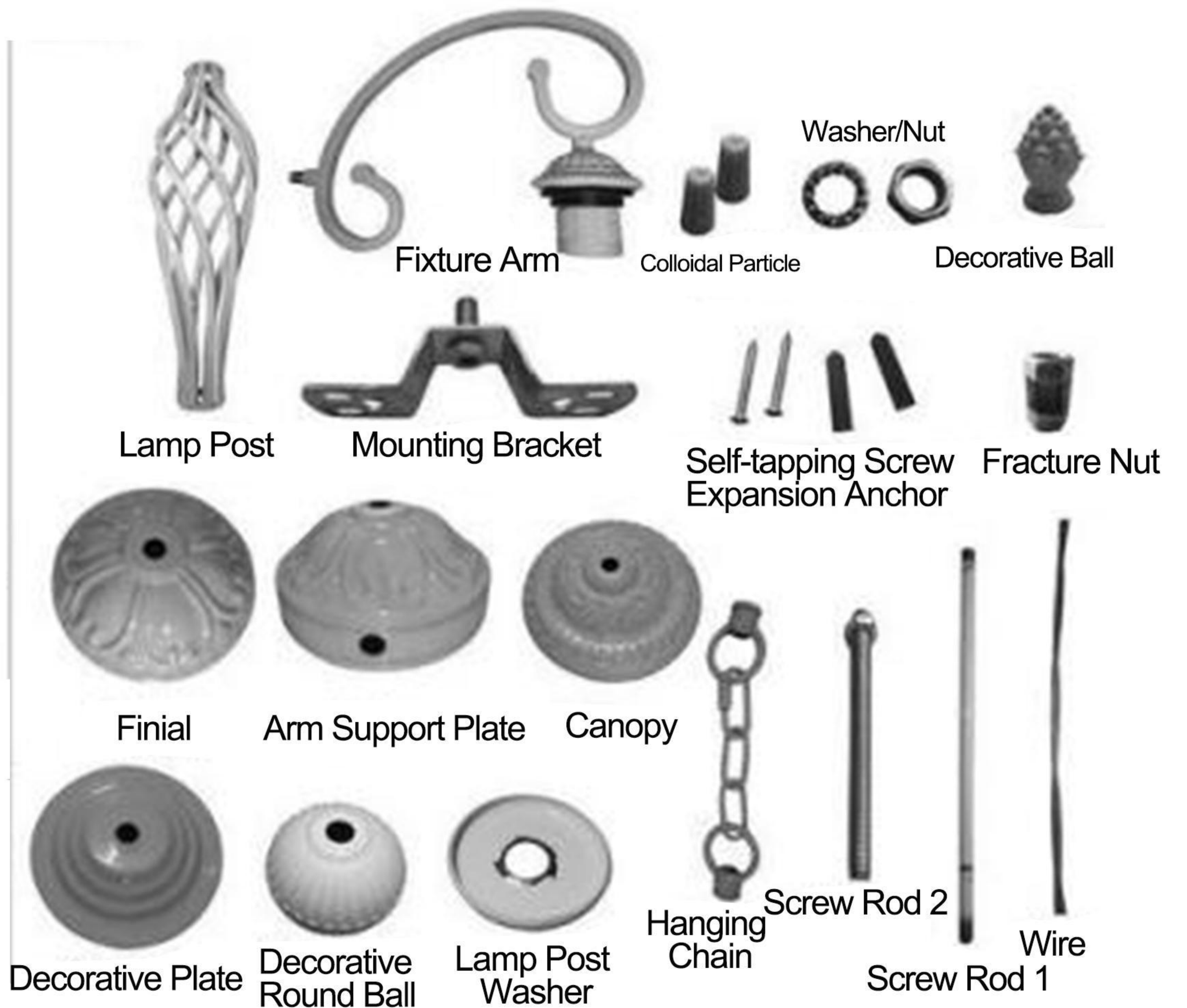


# Assembly Instruction Sheet

## Accessories:



## Installation Steps:

1. Remove the Mounting Bracket(A) from the canopy of Fixture Body(B). Mark the drilling position on ceiling with the help of the Mounting Bracket(A). Drill holes on the marks and stick the expansion anchors into the holes. Fix the Mounting Bracket(A) to the expansion anchors with self-tapping screws.
2. Thread the wire of Fixture Arm(C) to the hole from arm support plate of Fixture Body(B). Install the Washer(D) and screw the Fixture Arm(C) to the arm support plate of Fixture Body(B). Repeat the above step to fix the other Fixture Arms(C).
3. Thread the wire of arm support plate to the hole of canopy. Connect wire color Black/Red from the canopy as one strand of wire. Connect wire color White/Blue of the canopy as the other strand.
4. Hold the Fixture close to the ceiling. Connect live line to wire color Black/Red from the canopy of Fixture. Connect neutral line to wire color White/Blue from the the canopy of Fixture.
5. Attach the canopy of Fixture to the ceiling. Insert the bulb(Included) in the bulb base. Place the Glass Shade(E) to the socket of the Fixture Arm(C) and screw on the Socket Ring(F). Repeat the above step to fix the other Glass Shades(E).