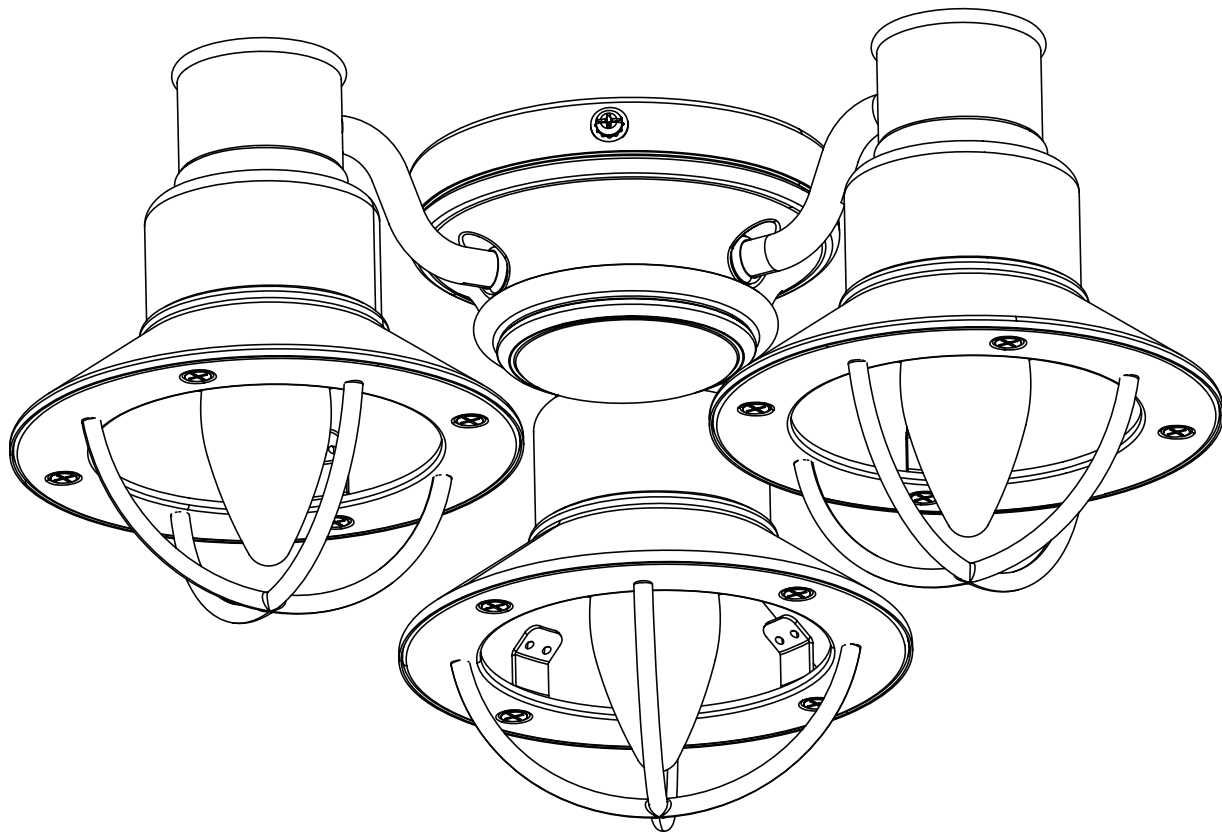
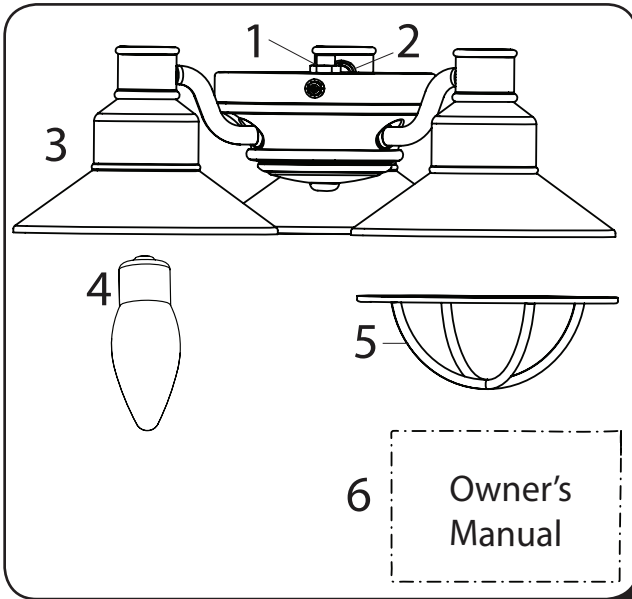


# CEILING FAN LIGHT KIT

## Owner's Manual



## PACKAGE CONTENTS



Unpack your fan and check the contents. You should have the following items:

### PACKAGE CONTENTS

- |                         |                     |
|-------------------------|---------------------|
| 1. Hex Nut              | 5. Light Cage (x 3) |
| 2. Lock Washer          | 6. Owner's Manual   |
| 3. Light Kit            |                     |
| 4. E-26 LED Bulbs (x 3) |                     |

## TOOLS NEEDED

The following tools are required to install the light kit (not included): Phillips Screwdriver and Step Ladder

The following tools may also be needed to install the light kit (not included): Gloves, Safety Glasses, Wire Cutters and Wire Strippers

## SAFETY INSTRUCTIONS

READ ALL SAFETY INFORMATION AND INSTALLATION INSTRUCTIONS BEFORE BEGINNING TO INSTALL THE LIGHT KIT AND SAVE INSTRUCTIONS.

- This fixture is intended for use with an indoor ceiling fan. Not suitable for damp or outdoor locations.
- The fan images and instructions in this manual are generic, but in most cases the installation will be easy to follow. If unsure about installation, consult a qualified licensed electrician for proper installation.
- The net weight of the light kit is less than: 4.4 lbs.

### WARNING

- To avoid risk of electric shock, be sure to shut off power at the main fuse or circuit breaker box before installing or servicing this fixture. Turning off the electrical power by using the light switch is not sufficient to prevent electrical shock.
- Installation must comply with the national electrical code, ANSI/NFPA 70-1999 and local codes. If you are unfamiliar with the methods of installing electrical wiring, seek the services of a qualified licensed electrician.
- To avoid personal injury, the use of gloves or protective clothing may be necessary when handling fixture parts with sharp edges.
- To reduce the risk of fire, electrical shock or personal injury, do not connect this fixture to a ceiling fan is not properly grounded.
- To reduce the risk of fire, electrical shock, or personal injury, each wire connector used with this light kit should accept only one 18-gauge wire from the light kit and one 18-gauge wire from the ceiling fan.
- Ensure the light kit is mounted to a ceiling fan that is mounted to an outlet box labelled "Acceptable for fan support" and is secured to the building structure.
- Wire colors from ceiling fan may not be the same color used in this manual. When in doubt, consult a qualified licensed electrician to determine the proper wiring.

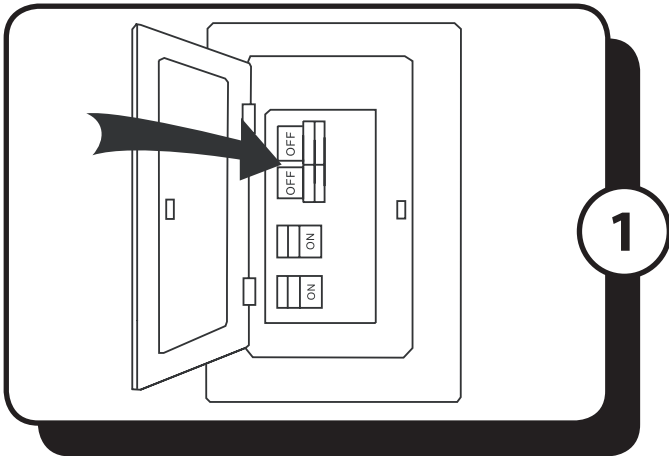
### FCC INTERFERENCE STATEMENT

**CAUTION:** This equipment has been tested and found to comply with the limits for a Class B digital device, pursuant to Part 15 of the FCC Rules. These limits are designed to provide reasonable protection against harmful interference in a residential installation. This equipment generates, uses and can radiate radio frequency energy and, if not installed and used in accordance with the instructions, may cause harmful interference to radio communications. However, there is no guarantee that interference will not occur in a particular installation. If this equipment does cause harmful interference to radio or television reception, which can be determined by turning the equipment off and on. The user is encouraged to try to correct the interference by one or more of the following measures:

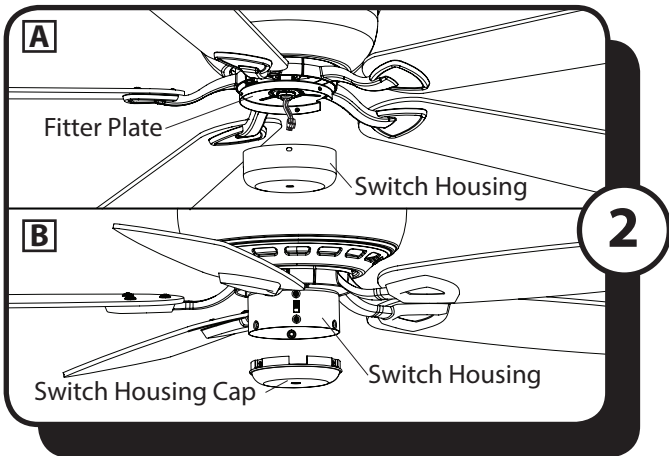
- Reorient or relocate the receiving antenna.
- Increase the separation between the equipment and receiver
- Connect the equipment into an outlet on a circuit different from that to which the receiver is connected.
- Consult the dealer or an experienced radio/TV technician for help.

Please note that changes or modifications not expressly approved by the party responsible for compliance could void the user's authority to operate the equipment.

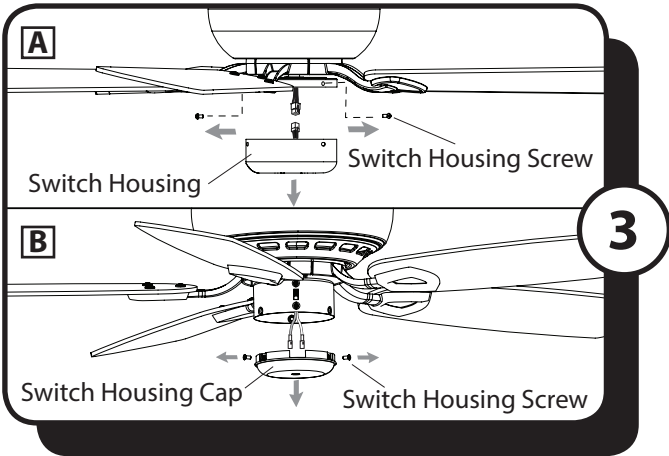
## ASSEMBLY INSTRUCTIONS



1. Turn OFF the electrical power at the main fuse or circuit breaker.

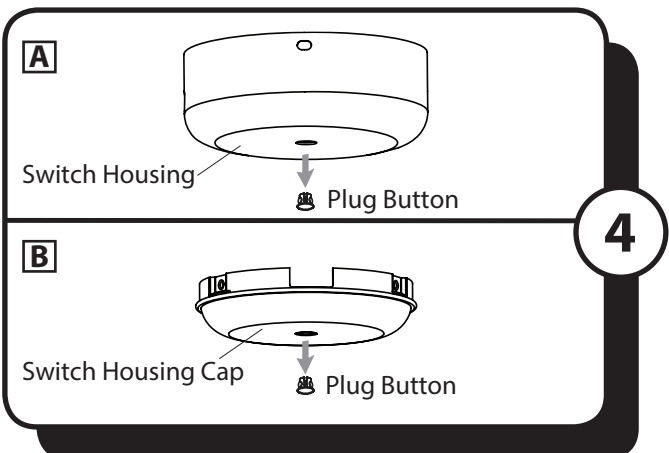


2. Select the configuration (A or B) which most closely matches your fan. Most ceiling fans have either a one-piece removable switch housing that connects to a fitter plate (A) or a permanent switch housing with a switch housing cap (B).



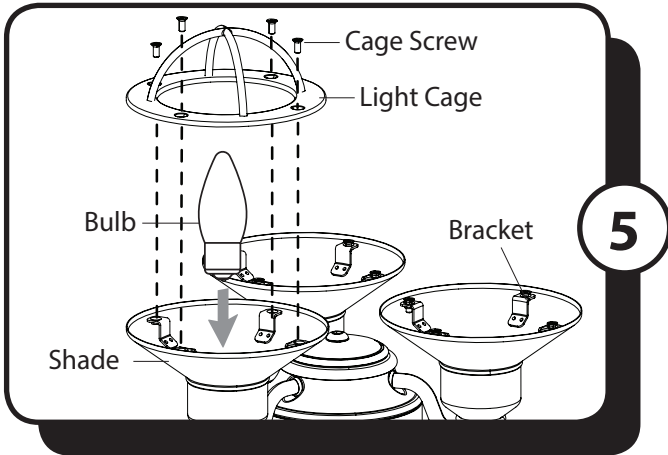
3. Remove the three switch housing screws in order to remove the switch housing (A) or switch housing cap (B) from the existing fan. If applicable, remove any wire connectors that connect wires from the fan to the switch housing and/or disconnect the male and female plugs.

**Note:** Save the three switch housing screws for later.

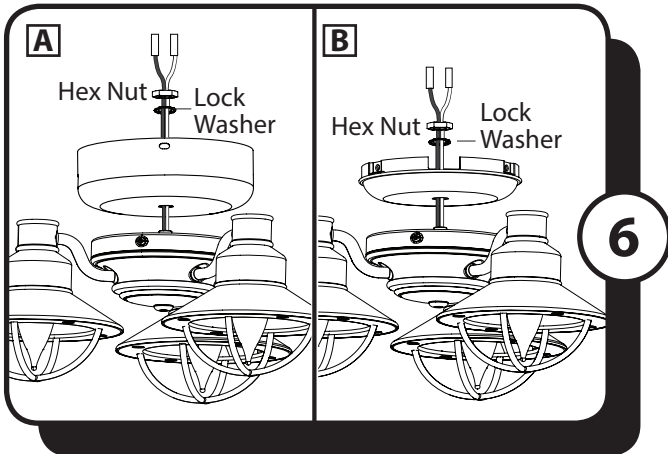


4. Use a screwdriver to push the plug button out of the switch housing (A) or switch housing cap (B).

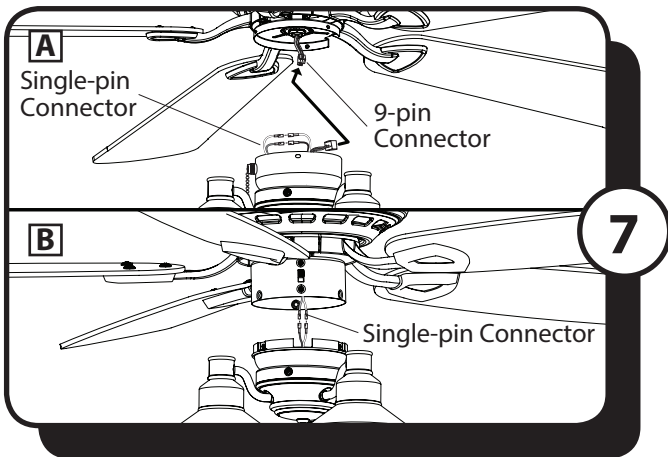
## ASSEMBLY INSTRUCTIONS



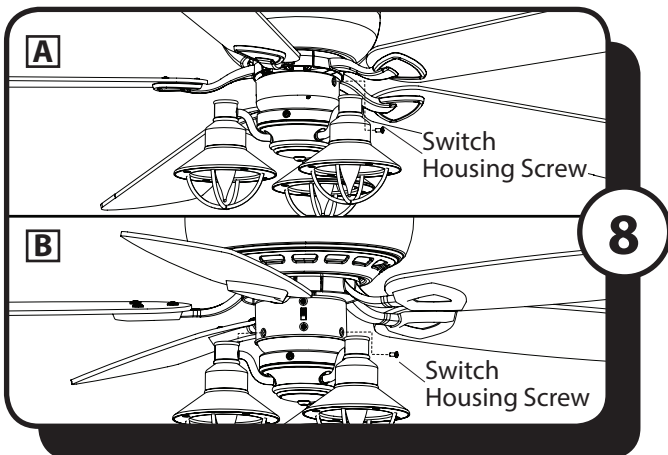
5. Remove the four cage screws from the brackets inside the shade. Install the bulb in the socket. Then attach the light cage to the shade using the four cage screws. Repeat for each shade.



6. Remove the hex nut and lock washer from the threaded rod at the top of the light kit. Then, insert the wires and threaded rod from the light kit through the center hole in the switch housing (A) or the switch housing cap (B). Secure the switch housing (A) or switch housing cap (B) to the light kit using the lock washer and hex nut.

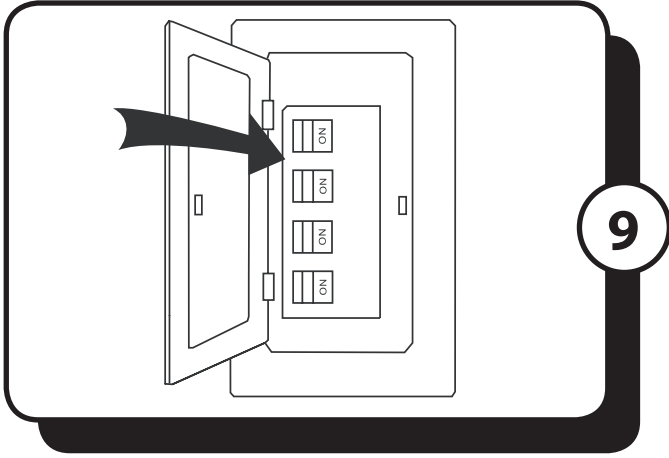


7. Use the single-pin connectors to connect the wires from the light kit to the wires in the switch housing (A or B) black to blue and white to white. If your fan has a fitter plate (A), you may also need to connect the 9-pin connector from the fan to the 9-pin connector from the switch housing.



8. Using the three previously removed switch housing screws, re-attach the switch housing to the fitter plate (A) or the switch housing cap to the switch housing (B).

## ASSEMBLY INSTRUCTIONS



9. Restore the power at the main fuse or circuit breaker.

## TROUBLESHOOTING

PROBLEM	SUGGESTED REMEDY
Fixture does not light up.	<ol style="list-style-type: none"><li>1. Turn on wall switch, and check fuses or circuit breakers.</li><li>2. Check wire connections from fan to light kit, located in the switch housing of the ceiling fan.</li><li>3. Lower the canopy on the fan. Ensure the blue fan wire (light power) is connected to a black (hot/live) household supply wire. Re-install the canopy.</li></ol>

## TROUBLESHOOTING

# 1-YEAR LIMITED WARRANTY

T

The manufacturer warrants all of its lighting fixtures against defects in materials and workmanship for one (1) year from the date of purchase. If within this period the product is found to be defective, take a copy of the bill of sale as a proof of purchase and the product in its original carton to the place of purchase. The manufacturer will, at its option, repair, replace or refund the purchase price to the consumer. All costs of installation and removal of the fixture is the responsibility of the consumer. This warranty does not cover fixtures becoming defective due to misuse, accidental damage or improper handling and/or installation and specifically excludes liability for direct, incidental or consequential damages. As some states do not allow exclusions of limitations on an implied warranty, the above exclusion and limitation may not apply. This warranty gives you specific rights and you may also have other rights which may vary from state to state.