

Attention

- 1.We Suggest work under proper temperature and humidity, if low temperature and low moisture , easy to cause the air too dry.
- 2.Please keep the air inlet and the air outlet unblocked,Do not use thin rods or wires to pull out the inside of the machine during work to avoid malfunction or danger.
- 3.Dehumidifier work should be placed horizontally, or after the expiration of the water will not stop working, and water will overflow
- 4.Do not use the machine for a long time, Please pour out of the water or there will be smelled.
- 5.Do not tilt out the water box, Avoid spilling water

Suitable conditions

Best humidity :>5℃
Best temperature: >40%
Max effective area: 30 square meter

1

Common problems and troubleshooting

Problem	Possible reasons	Solution
Connect the power,But not work and show the water filled	The water is filled in the box	please pour out the water, and put into again
	Floating ball stuck	Please put down the ball and put the water box on the position before
Do not work	Power supply was cut off	Please check and make sure the power connection
	Turn off the switch	Please check and turn on the switch
	Air vent blocked	Products around should be leave a gap about 10 cm
Loud noise when working	Uneven ground	Please making sure it is completely level
	Air vents is blocked	Please clean the air outlet and inlet

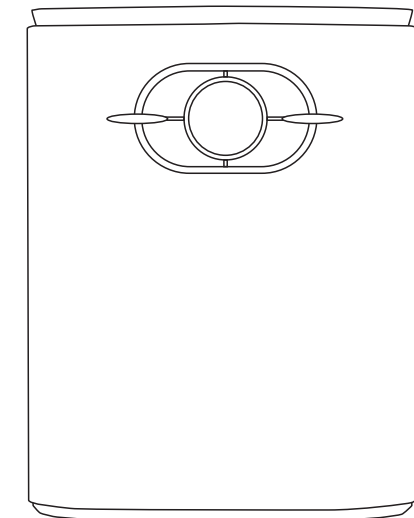
Accessories List

Name	Quantity
Remote control	1
Drain-pipe	1
Instruction manual Warranty card	1

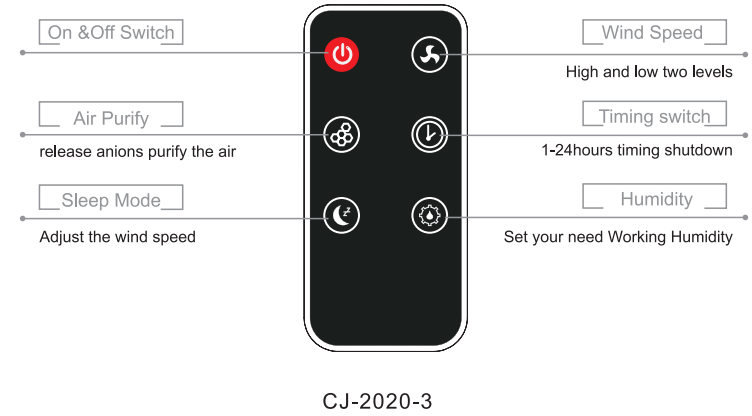
6

Instruction Manual

Dehumidifier



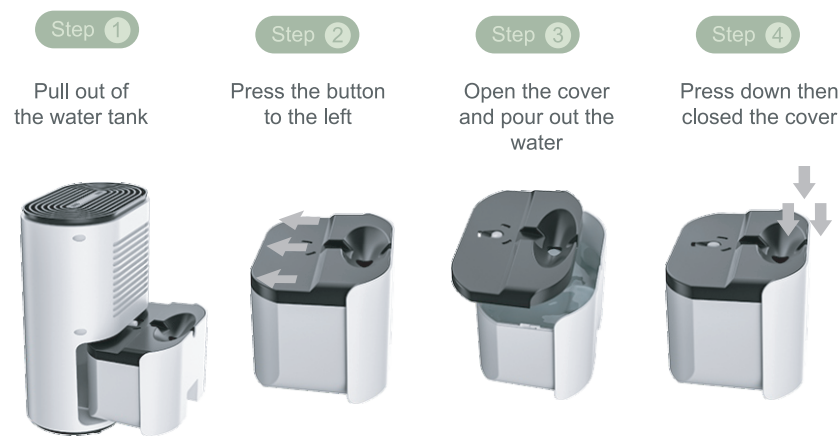
CJ-2020-3



CJ-2020-3

How to pour water

Only need 4 steps ,Easy to pour out the water from machine



3

Instructions for use

How to Installation?
Please put the machine in the ventilated place,Not in corner.
Should placed on the floor of the solid flat, in order to avoid vibration and noise

How to Use?
Firstly lock all doors and Windows, To avoid moist air into the indoor, affect the dehumidifying, If it is not necessary don't open door or window more times during work time.

Product maintenance

- 1.Please Turn off the machine and Pull out the power plug
- 2.Please wiped clean with a soft cloth and water. Do not use detergent and put the power plug in the water directly
- 3.Do not spray water directly inside or outside the machine
- 4.Tidy up the power cord before collection
- 5.Do not use sharp objects to prevent scratches machine
- 6.Children should be supervised to ensure that they do not play with machines.
- 7.After maintenance and cleaning, Put the Machine and parts in the box and place them in a dry place for storage.

Operating steps

Position the unit on a level surface and ensure that there are no obstacles

- 1.Please make sure that the power cord is connected.Turn on the switch and start the working
- 2.Press the Air Purify button to release anions purify the air,Long press the button 3 seconds to start sleep mode.You can check the wind will slow down, Has 24 hours timing function.
- 3.Press the Humidity button to set your need working humidity, When reached the set value will automatically stop, more than the set value will automatically start, long press the button 3 seconds can adjust wind speed.

4

Dehumidifier drainage

- 1.The dehumidifier will automatic stop when water is full,The water level in the box reaches a certain position will be light up.Please cut off the power cord then Pour the water out that you can continue-working
- 2.The dehumidifier has the function of connecting water pipe. After pulling out the water tank, insert the water pipe into the water outlet, and then pull out the water tank to prevent water leakage and stop

Safety Guidelines

- 1.Please check and confirmed the Voltage is 220-240V,50Hz
- 2.This product has the function of purifying air with anion
- 3.Position the unit on a level surface and ensure here are no obstacles within 10cm of the dehumidifier.
- 4.Do not direct sunlight and near a heat source
- 5.Do not put the dehumidifier in the wet or water place, which is easy to cause short circuit.
- 6.Do not use wet hands to pull the power plug,avoiding the risk of electric shock
- 7.Please keep the air inlet and the air outlet unblocked to minimize the risk of fire and malfunction
- 8.Please check the power cord regularly,If find the broken, it should be sent to the maintenance center in time
- 9.Do not put inflammable and explosive goods in side
- 10.Do not put the power code into the water
- 11.Do not put the fragile goods on the top of machine
- 12.Do not repair by yourself
- 13.Please refer the instruction before using
- 14.The machine is not suitable for people (including children) with physical,sensory or mental disabilities or lack of experience and common sense,unless their safety officer gives them adequate care and instructions on how to use the machine.

Technical Parameters

Model No.	CJ-2020-3
Rated Voltage/Power	220-240V ~50Hz/45W
Max Dehumidifying Capacity	500-600ML/day
Max Water Volume Capacity	1200ML
Product Size	200*110*255mm

5

Structure Diagram



(Pictures for reference only, subject to our product)

- ① Display screen ② Air Inlet ③ Air outlet ④ Power cord
⑤ Water Tank ⑥ Drain-pipe position



2