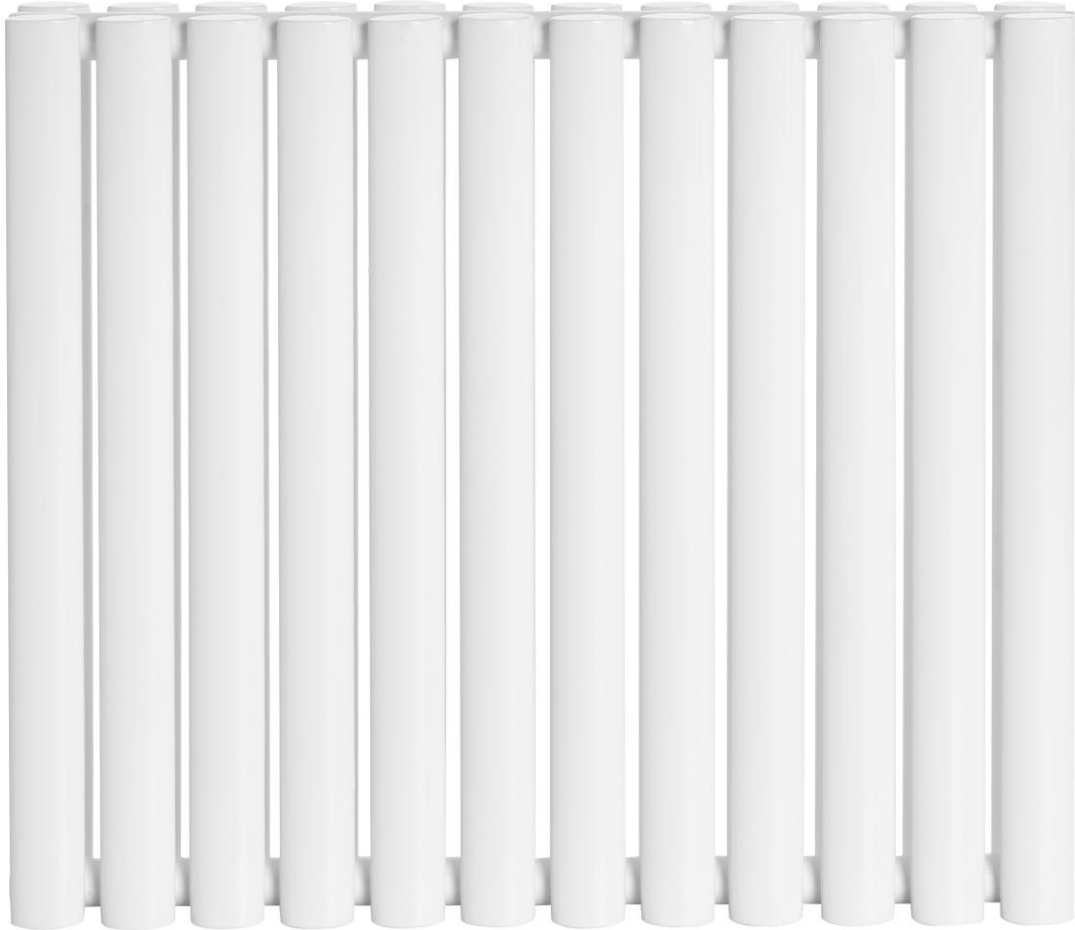


HORIZONTAL DESIGNER RADIATOR INSTALLATION INSTRUCTIONS



5 Year Guarantee
Material : Mild Steel

Please note: Radiator shown for illustration purposes only.
Valves and heating elements sold separately.

TOOLS REQUIRED (NOT SUPPLIED)

- Drill & Suitable Drill Bit
- Pozi Drive Screwdriver/Flathead Screwdriver
- PTFE Tape
- Measuring Tape
- Spirit Level
- Pencil
- Air vent key (can also be bled using a flathead screwdriver)

SAFETY

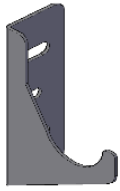
- Installation should be carried out by a qualified professional or other fully competent person and should be installed in accordance with the relevant British and European Standards (BS7593:2006, EN12828:2012+A1;2014, EN12831:2003 & EN14336:2004).
- When drilling walls, check first for hidden pipes and/or cables.
- Please ensure that you wear all necessary personal protective equipment for your safety. Use safety eyewear when drilling.
- Handle the product with care.
- Keep small parts away from children.
- Please check that all components are present and that you are entirely happy with the size, design and finish before starting installation.
- Electrical supply fitted with an RCD (Residual Current Device) is recommended.

DISCLAIMER

Please notify the point of purchase immediately of any damage or faults. The manufacturer cannot be held responsible for any installation costs that may arise from damaged or faulty products being installed.

List of Additional Parts Supplied

Brackets x4



(Including cushioning strips)

Wall Plugs x8



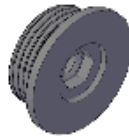
Screws x8



Air Vent x1



Blanking Plug x1



Cover Caps x2



FIXING TIPS

- A piece of insulating tape or a couple of layers of masking tape applied to the wall before drilling will help stop the drill from wandering, particularly on tiled surfaces.
- Exercise great care when using power tools near water. The use of a Residual Current Device (RCD) or Cordless Drill is recommended.
- Always double check the position and your measurements before drilling holes.
- When working near a basin or bath, insert a plug into the waste. This could help you to avoid losing small parts.

FITTING THE RADIATOR ONTO THE WALL

1. Gently remove the radiator from all packaging. Sufficient PTFE tape must be applied to the valve-tail threads prior to their installation. Silicone thread sealant should be applied to all threaded components manufactured with 'O-rings'.
2. Screw the air vent and the blanking plug into the two holes on the top of the radiator.
3. Ensure the selected wall is sufficiently strong enough to hold the weight of the radiator filled with water.

- NOTE:** Wall plugs and screws supplied are intended for masonry walls. Alternative fixings may be required dependent on wall type.
4. Before drilling, please make sure that there are no hidden pipes or wires in the wall.
 5. Using the radiator and spirit level, mark the position of the brackets.
 6. Mark the centres of the brackets onto the wall. Drill suitable holes and insert the wall plugs.
 7. Screw the brackets into the wall plugs using the wall screws.
 8. Clip the radiator onto the brackets and ensure the unit is secure.
 9. Make the necessary connections to the heating system. A good quality corrosion inhibitor suitable for the system should be used.
 10. Finally, remove any trapped air from the radiator using the air vent. This step may need to be repeated to ensure all air is removed. It is recommended that an air vent key is used for this step; however a flathead screwdriver may be used as an alternative.
 11. If fitting a heating element to the radiator please refer to the manufacturer's instructions supplied with the heating element.

CARE AND MAINTENANCE

Regular cleaning with a soft cloth will keep the surface of your radiator looking like new. Soapy water can be used to remove stubborn stains, then buff dry with a soft cloth.

Do not use abrasive or chemical cleaners to clean your radiator, as these will damage the surface finish over time.

We have take great care to ensure that this product has reached you in perfect condition. However, should any parts be damaged or missing, please contact your point of purchase. This does not affect your statutory rights. In addition, if you require any replacement parts, your point of purchase will be happy to assist.