



COMPACT ULTRASONIC HUMIDIFIER

USER MANUAL

FOR MODEL:
PAU1



Before using your ultrasonic humidifier, please read this manual carefully and keep it for future reference, along with your receipt.



CONSUMER PRODUCT INFORMATION

For your own records, please attach a copy of your sales receipt to this manual.
Also, write the store name/location and date purchased below:

Store Name: _____

Location: _____

Date Purchased: _____

CONTENTS

Safety Guidelines2-3

Technical Data..... 3

Features..... 3

Structure Diagram 4

Setting Up Your Humidifier 5

Operating Instructions 6

Weekly Maintenance Cleaning & Care 7

Storage Instructions 7

Warranty 8

Troubleshooting 9

SAFETY GUIDELINES

When using electrical appliances, basic safety precautions should always be followed. Failure to follow these safety precautions may result in personal injury, property damage, fire or shock.

1. Always have water in water tank (water bottle) when operating unit.
2. Use only clean, distilled or FILTERED tap water. Using tap water with a high mineral content (hard water) will result in a white dust and the need for more frequent cleanings. Hard water can be harmful to unit and may eventually cease its operation.
3. Be sure the water bottle adaptor is tightly and completely inserted into the water bottle.
4. Position the unit within the room so the air output from the mist control output nozzle is aimed away from children, walls and furniture (min. 36 in. clearance).
5. When removing the water bottle, have both hands securely on the bottle.
6. DO NOT use if tank (water bottle) is cracked.
7. DO NOT place the appliance near heating devices such as a stove. Keep unit out of direct sunlight. Keep the cord away from heated surfaces and areas where it can be stepped on or tripped over.
8. Use only 110-120V AC outlet. Be sure unit is plugged in firmly and completely. As with any electrical device, plug and unplug unit with dry hands only. Only use cord provided with this unit. **DO NOT USE IF CORD IS DAMAGED.**
9. Turn the humidifier off and unplug the unit when not in use, when moving or when cleaning.
10. To avoid the risk of fire, shock or personal injury, do not use an extension cord.
Warning: Never operate unit with a damaged cord or plug.
11. DO NOT place on floor or carpet. Always place unit on a flat, level, waterproof surface at least 24 inches off floor AWAY from direct sunlight, computers or other sensitive electronic equipment.
12. DO NOT place the humidifier on wood furniture or other surfaces that can be damaged by water.
13. DO NOT place on towel or soft surface. This will block the air vent and cause overheating.
14. DO NOT add medication or cleaning products of any type into the mist control nozzle, base or water tank. (See "Weekly Maintenance Cleaning & Care" section of this manual for proper instructions on cleaning the unit.) DO NOT cover, block or place anything over any opening. NEVER drop or insert any object into any openings.
15. The unit should not be left unattended in closed rooms as air could become saturated and leave condensation on walls or furniture. Always leave room door partially open.
16. DANGER: NEVER immerse the humidifier motor unit (base) in water or other liquids as electrical shock may occur.
17. DO NOT use outdoors.
18. Turn humidifier OFF if the relative humidity exceeds 60% or if you notice condensation on inside of windows. For proper humidity reading, use a hygrometer which is available in many retail stores.
19. The nebulizer (ultrasonic transducer) is highly sensitive. Keep this important part clean and treat it gently. Only clean per instructions (page 7).
WARNING:
 - Do not touch the nebulizer while the unit is operating, as possible burns could result.
 - Do not touch the nebulizer with fingers. Any residue on the metal will reduce mist output.
20. The unit contains no consumer serviceable parts. To reduce the risk of electrical shock, do not attempt to open the base of the humidifier.

SAFETY GUIDELINES (CONTINUED)

DANGER! To reduce the risk of electrical shock, this product has a polarized plug (one blade is wider than the other). As a safety feature this plug will fit into the outlet only one way. If the plug does not fit fully into the outlet, reverse the plug. If it still does not fit, contact a qualified electrician. DO NOT attempt to bypass this safety feature. Improper use of electric cords and plugs can cause a fire or electric shock hazard. NEVER pull on the cord to remove the plug from the outlet. Grip plug and pull from outlet. Check the power cord and plug for damage. A damaged cord or plug must be repaired before using the humidifier.

TECHNICAL DATA

Model: PAU1
Voltage: 120V~/60Hz
Watts: 12W
Max. Run Time: 12 hours
(based on a 24 oz water bottle)
Water Tank Capacity: 12–24 oz

FOR HOUSEHOLD USE ONLY

All data was tested by the factory and is for reference only.

This product is designed for home use only.

FEATURES



**PERFECT AIRE
MICRO MIST®**



**WHISPER QUIET
OPERATION**



**ADJUSTABLE
OUTPUT LEVELS**



**REFILL
INDICATOR**



**AUTO
SHUT-OFF**



**ADJUSTABLE
OUTPUT DIRECTION**



TRAVEL SIZE

ULTRASONIC TECHNOLOGY

Ultrasonic technology is widely used in various domains. Water is atomized by ultrasonic sound waves and propelled through the air by a small fan. These ultrasonic pulses are silent and produce visible mist that quickly disperses to increase the level of humidity in the immediate area. The unit features an easy to clean ultrasonic transducer (nebulizer) for increased longevity.

AUTO SHUT OFF PROTECTION / WATERLESS INDICATOR

When the water tank is empty, the motor will shut off automatically and the Power Indicator Light will turn red.

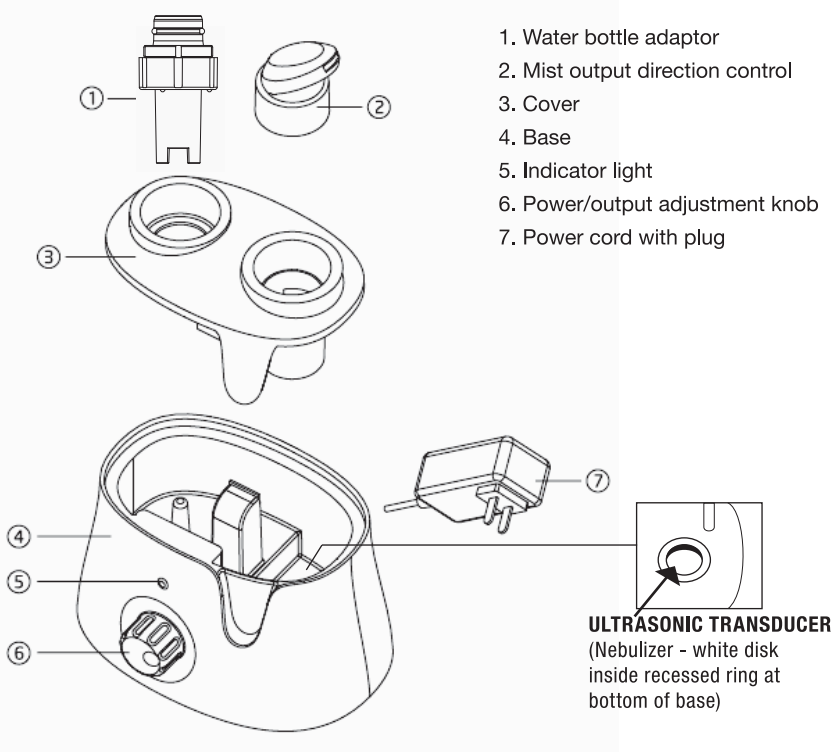
PERFECT AIRE MICRO MIST®

Perfect Aire Micro Mist® water particles are smaller than water particles produced by regular ultrasonic humidifiers. Benefits of Perfect Aire Micro Mist® technology include up to 40% greater output, water vapor particles 70-80% smaller for quicker air dispersion, 25% greater room coverage, and less condensation on and around unit.

OVERLOAD PROTECTION

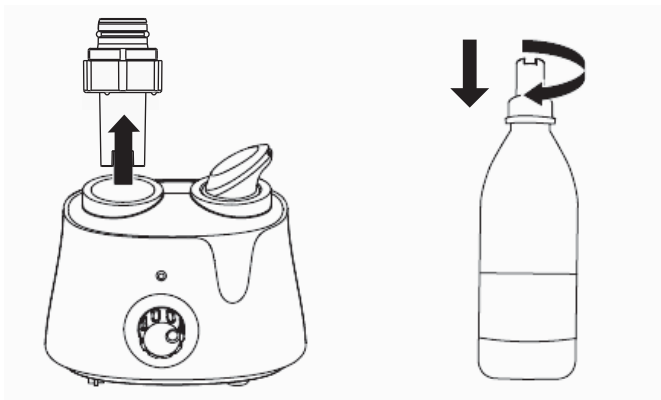
The unit will automatically shut off if a circuit is overloaded.

STRUCTURE DIAGRAM

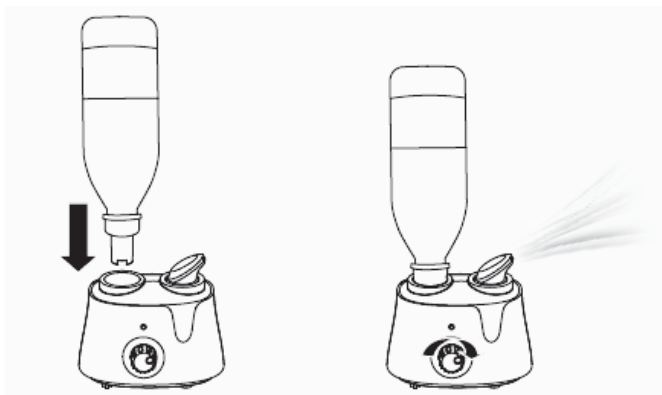


SETTING UP YOUR HUMIDIFIER

1. Remove the water bottle adaptor from the unit.
2. Open the water bottle. (Water bottle not included.)
3. Gently push or twist the water bottle adaptor completely into the water bottle. The adaptor should fit into the mouth of the water bottle snugly.



4. Carefully put the water bottle onto the base. The base will partially fill with water from the bottle.
 5. Plug the unit completely into an adequate outlet. (See technical data on page 3.)
 6. Turn unit on by turning the knob clockwise. The indicator light will come on and mist will come from the mist outlet. The indicator light will turn red when the water tank is empty.
- NOTE: Turn the unit off when refilling the tank/bottle, changing the bottle or moving the unit.



OPERATING INSTRUCTIONS

IMPORTANT NOTES REGARDING HUMIDIFIER USAGE

It is recommended that the humidifier base be cleaned before first use. See cleaning instructions on the next page.

Be sure unit is at least 24 inches off of the floor. Place unit on a firm, level surface. Do not place unit on a soft, unstable surface, towel or wood. Placing the unit on a soft surface will block the air vent and cause overheating. The humidifier should be placed at least 24 inches away from all walls and away from heat sources and at least 6½ feet from any electronics such as a TV set, speakers, etc.

WHEN FILLING THE WATER BOTTLE (TANK), NOTE:

- Always unplug unit before filling and replacing water bottle (tank).
- Distilled or softened water is highly advised. Minerals in (hard) tap water may cause a “white dust” to appear on furniture and also can eventually cause unit failure.
- DO NOT ADD ANY SOLUTIONS OR ADDITIVES TO THE WATER. DOING SO WILL CAUSE THE UNIT TO FAIL.**
- Extreme temperatures can damage unit. Water temperatures should NEVER be too hot or too cold.
- Return water bottle securely to base before turning on humidifier.

TO TURN UNIT ON

1. Plug power cord directly into a 110-120V AC wall outlet only. Do not use an extension cord.
2. Turn the On/Off Output Adjustment Knob clockwise to begin operating the unit and to adjust the mist output level.
3. Turn mist output direction control to manually adjust mist direction.

TO TURN UNIT OFF

Turn unit off when desired room humidity is achieved by turning the On/Off Adjustment Knob counter-clockwise, to the far left.

- Always turn unit off when water bottle is empty.
- Unit will automatically stop creating mist when water level in base is very low.
- Do not let water sit in water bottle or base for more than 24 hours without use.
- Unplug the unit when not in use.

DANGER!

Improper use of electric cords and plugs can cause a fire or electric shock hazard. NEVER pull on the cord to remove the plug from the outlet. Grip plug and pull from outlet. Check the power cord and plug for damage. A damaged cord or plug must be repaired before using the humidifier.

ONLY USE THE CORD PROVIDED WITH THIS UNIT.

WEEKLY MAINTENANCE CLEANING & CARE

IMPORTANT:

- ALWAYS unplug the power cord before cleaning.
- NEVER use any cleaning products/solutions (especially abrasive, corrosive or flammable cleaner such as alcohol) in unit as these can be harmful to the unit and void warranty if used.

CLEANING INSTRUCTIONS

Thoroughly clean the humidifier weekly. It is recommended that the unit be cleaned more frequently if tap water/hard water is being used. Using hard water in the unit leaves mineral deposits and creates “white mist”.

CLEAN BASE EVERY WEEK FOR OPTIMUM PERFORMANCE.

1. Fill the base 4-oz of undiluted white vinegar.
2. Let the solution stand for 20 minutes.
3. With the vinegar in the base, clean all the interior surfaces with a soft cloth or brush to help remove scales. Do not touch the nebulizer with fingers. Any residue on the nebulizer will reduce mist output.
4. Carefully rinse with clean, warm water and gently wipe clean. DO NOT submerge or place base of the unit under running water.
5. Clean the outer surface with a damp, soft cloth to prevent dust accumulation.

NOTE: Discard and replace water bottle when signs of wear are evident.

STORAGE INSTRUCTIONS

1. Clean unit thoroughly according to instructions above and allow the unit to dry completely before storing. DO NOT leave water in the tank or base for more than 24 hours.
2. Store unit in an upright position away from sunlight. Do not store in temperatures below 41°F.

ONE YEAR LIMITED WARRANTY

PERFECT AIRE® warrants that during the first year from the original date of purchase, this product will be free from defects in material and workmanship. Perfect Aire, at its discretion, will repair or replace this product or any component of this product found to be defective during the warranty period. This is a one-time replacement warranty. If the product is no longer available, Perfect Aire will replace the unit with a similar model of equal or greater value.

THIS WARRANTY IS NOT TRANSFERABLE.

PROOF OF PURCHASE IS REQUIRED IN ORDER TO OBTAIN WARRANTY ASSISTANCE.

THIS WARRANTY DOES NOT COVER:

- Damages caused by improper installation or improper cleaning.
- Negligent use or misuse of the product.
- Damages as the result of not using product in accordance with provided instructions.
- Damage to product, walls paintings/portraits, furniture, floor, etc. as the result of high mineral content in water.
- Damage to product, walls, paintings/portraits, any furniture (wood), floors, etc. as a result of improper installation and/or cleaning.
- Use of improper voltage or current.
- Additional or extended warranties offered by retailers.
- Disassembly or repair by anyone other than an authorized Perfect Aire service center provider.
- Products used in a commercial setting.
- Floor display 'as-is' models.
- Damage caused by acts of nature such as hurricane, tornado, fire, etc.
- Incidental or consequential damages caused by breach of any expressed, implied or statutory warranty or condition with exception to the extent prohibited by law.
- Any performance issues that fall outside of the 1 year warranty.

Note: Some states do not allow the exclusion or limitation of incidental or consequential damages. This limitation or exclusion may not apply to you.

DO NOT RETURN THIS PRODUCT TO THE STORE.

IF YOU HAVE ANY QUESTIONS ABOUT THIS PRODUCT OR ITS WARRANTY, PLEASE CALL CONSUMER SERVICES AT TOLL-FREE 844-4PA-AIRE (844-472-2473).

TROUBLESHOOTING

Please check the following troubleshooting tips before calling for assistance.

PROBLEM	REASON	SOLUTION
Power light is off	Unit not plugged in.	Plug in unit and turn on the power / output adjustment knob.
	Wall outlet has no power.	Check circuit and fuse; try another socket.
	Check power cord.	If damaged, call Consumer Services at 844-4PA-AIRE (844-472-2473)
Unit / Mist has peculiar smell	New unit.	Air unit out in cool place for 12 hours without the tank on the unit.
	The water is dirty or stale.	Thoroughly clean unit and place fresh water in bottle (tank).
Excessive noise	Vibration between the humidifier and surface.	Place the unit on a stable, waterproof surface.
	Low water level in water tank.	Fill the water tank.
White dust	Water contains high mineral content.	Switch to distilled or filtered water; clean nebulizer according to instructions.
Damp table or floor	Unit too far from end of table or too close to floor.	Move unit closer to edge of table so mist has more time to disperse. Do not place unit on floor.
	Base overflowed.	Water bottle adaptor not securely attached or needs replacement.
No mist / Little mist / Mist stuck	Base overfilled.	Empty base and restart.
	No water in the water bottle.	Add water to the water bottle.
	The power / output adjustment knob is not turned on.	Rotate the power / output adjustment knob clockwise to power the unit on.
	Unit is not on a flat surface.	Put the humidifier on a flat surface.
	There is scaling on the nebulizer / transducer.	Clean the nebulizer / transducer according to instructions.
	The water level is too low.	Add water to the water tank or replace it with another filled water bottle.
	The water is dirty or stale.	Thoroughly clean unit and place fresh water in bottle (tank).
	The nebulizer / transducer or fan does not work.	Call Perfect Aire Consumer Services: 844-4PA-AIRE (844-472-2473)
Condensation on windows or machine	The room is too small or too humid.	Turn down the mist volume or turn the unit off completely.
Scaling on nebulizer / transducer	Water is too hard.	Use distilled or filtered water. Follow cleaning instructions in this manual.
Mist circling in base but not coming out of the nozzle	Too much water in base.	Empty base. Trim ring from neck of water bottle if necessary. Leave space for air in bottle.
	Water bottle brand not compatible with unit.	Try a different brand of water bottle.

NOTE: A highly recommended troubleshoot for any issue in general consists of removing the water bottle, emptying the base, and trying a different brand of water bottle, as the unit is compatible with most, but not all, 20 oz. plastic water bottles.

After reviewing the above troubleshooting tips, should you have any questions or concerns, please call Consumer Services at 844-4PA-AIRE (844-472-2473).

Distributed by:



Perfect Aire, LLC
5151 Belt Line Rd.
Suite 878
Dallas, TX 75254

844-4PA-AIRE | 844-472-2473
www.perfectaire.us

PA/ManualPAU1/05192017

Specification and performance data is subject to change without notice.

Printed in China