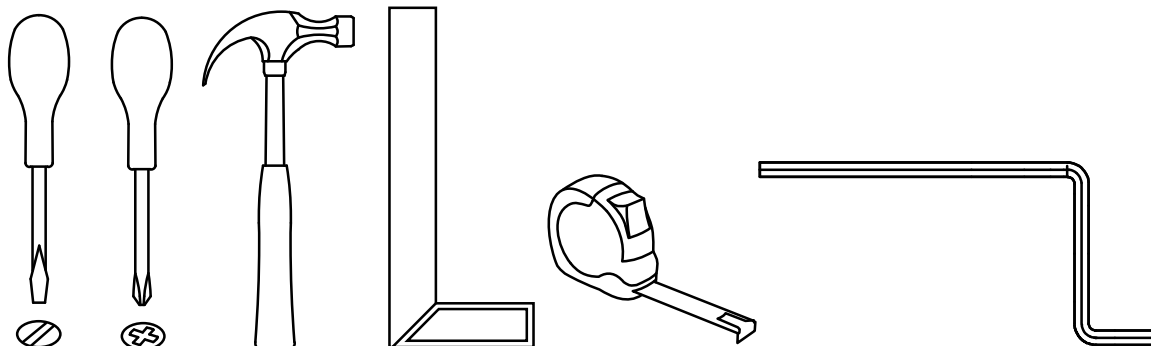


Tools needed to assemble the furniture: - Outils nécessaires pour assembler les meubles:

Werkzeuge, die für die Montage der Möbel benötigt werden: - Herramientas necesarias para armar el mueble:

Ferramentas necessárias para montar o móvel: - Strumenti necessari per assemblare il mobile:



The assembly must be done by two people.

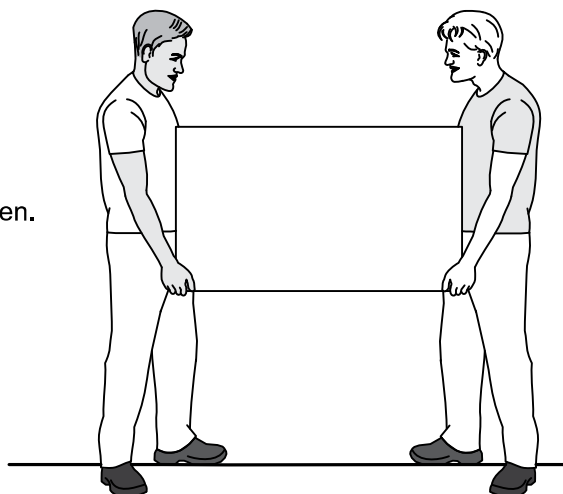
L'assemblage doit être effectué par deux personnes.

Es wird empfohlen, dass zwei Personen den Artikel montieren.

El montaje debe ser efectuado por dos personas.

A montagem deve ser efetuada por duas pessoas.

Il montaggio deve essere effettuato da due persone.



This product contain small parts, please,
keep out of reach of children.

Ce produit contient de petites pièces, s'il vous plait,
à conserver hors de portée des enfants.

Bitte halten Sie kleine Teile außerhalb der Reichweite von Kindern.

Este producto contiene piezas pequeñas,
mantener fuera del alcance de los niños.

Este produto contém peças pequenas, por favor,
mantenha fora do alcance das crianças.

Questo prodotto contiene piccole parti,
si prega di tenerle fuori dalla portata dei bambini.

In case of doubt, compare the hardware
with the full-size images below.

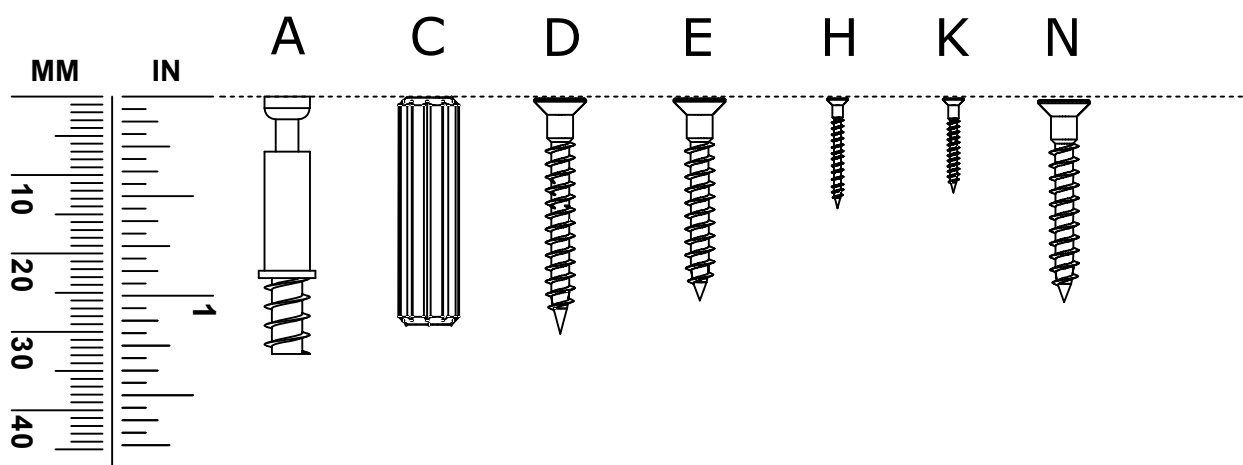
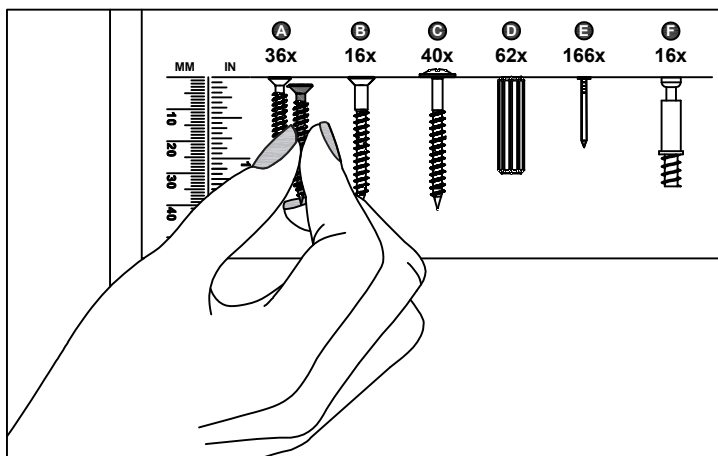
En cas de doute, veuillez comparer le matériel
avec les images en taille réelle ci-dessous.

Vergleichen Sie im Zweifelsfall die Schrauben
mit den Abbildungen in Originalgröße.

En caso de dudas, compare las herrajes
con las imágenes a seguir en tamaño real.

Em caso de dúvida, compare as ferragens
com as imagens abaixo em tamanho real.

In caso di dubbio, confronta le ferramenta
con le immagini sottostanti a grandezza reale.



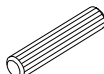
A x 68



B x 68



C x 58



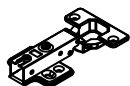
D x 12



E x 12



F x 7



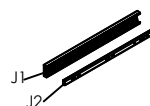
G x 7



H x 92



J x 2



K x 16



L x 2



M x 2

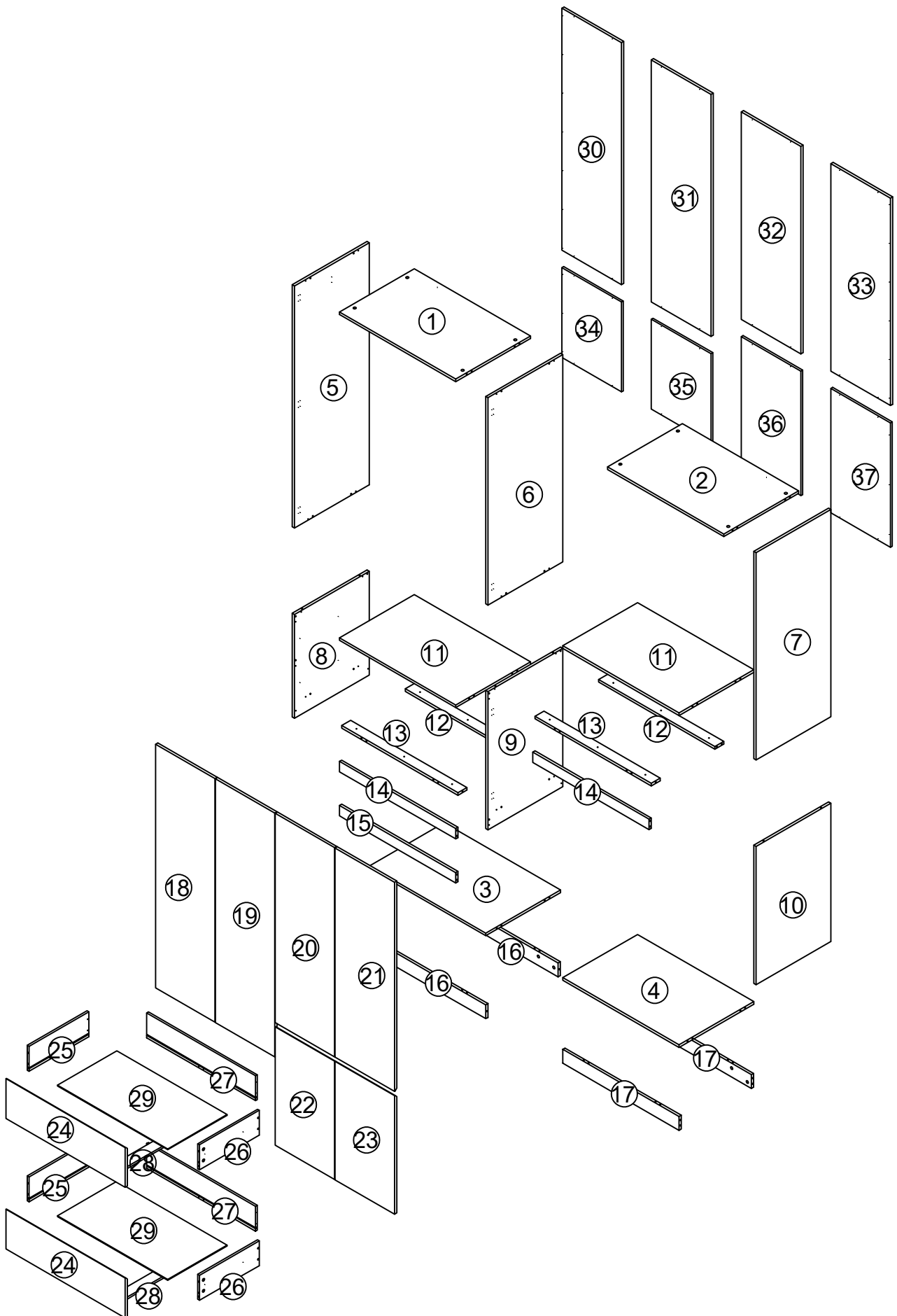


N x 51



P x 4





ATTENTION - AVERTISSEMENT - ACHTUNG - ATENCIÓN - ATENÇÃO - ATTENZIONE

Assemble the furniture on a clean and flat surface and cover it with the cardboard of the packaging.

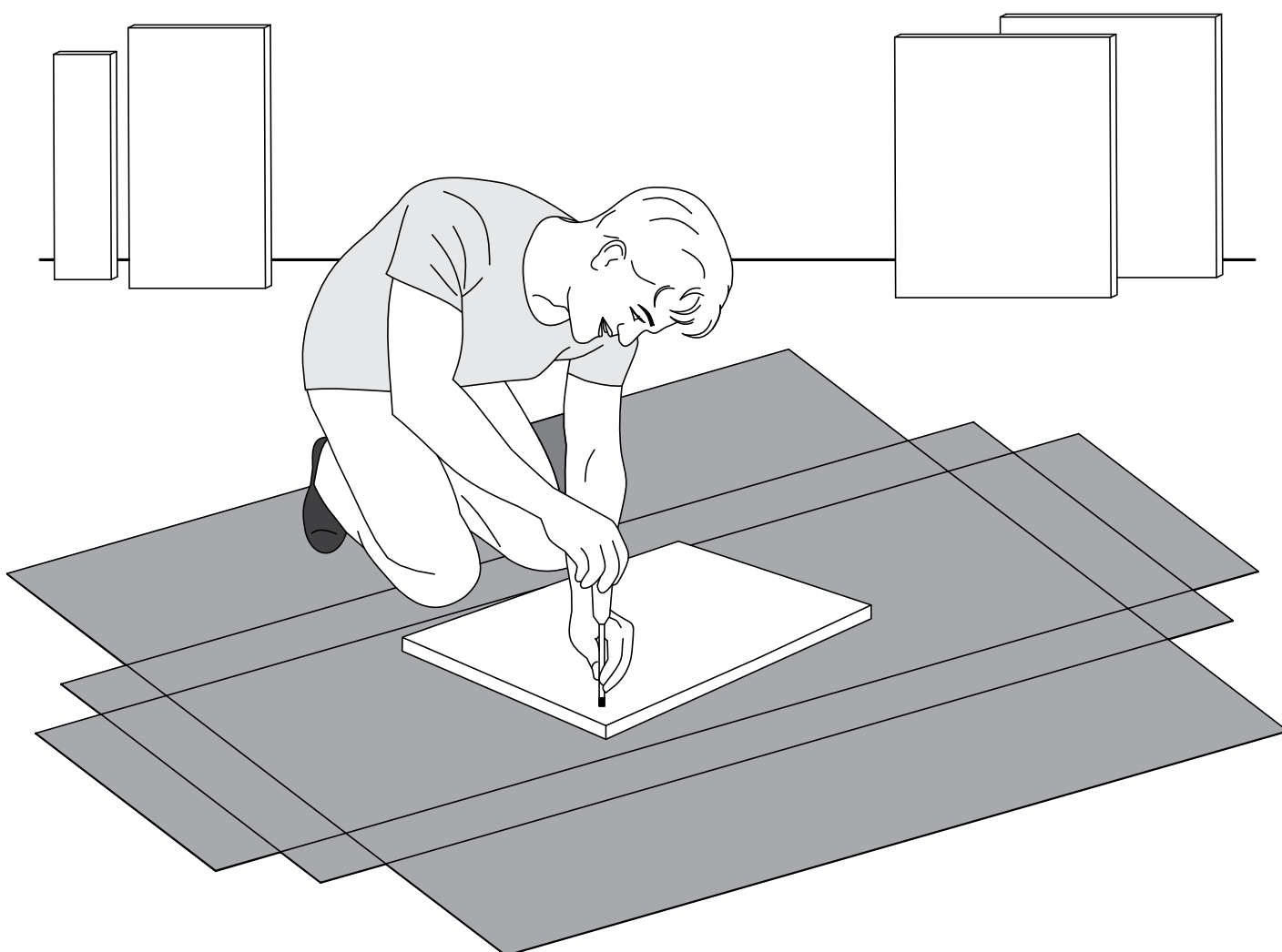
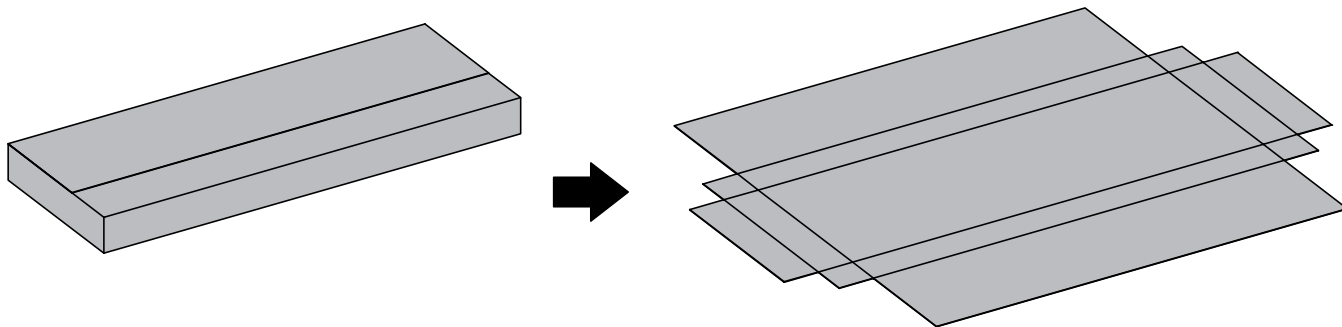
Assemblez le meuble sur une surface propre et plane et couvrez-le avec le carton de l'emballage du produit.

Um Beschädigungen zu vermeiden, montieren Sie den Artikel auf einer weichen, sauberen Unterlage.
Tipp: Legen Sie den Artikel auf dem Verpackungskarton.

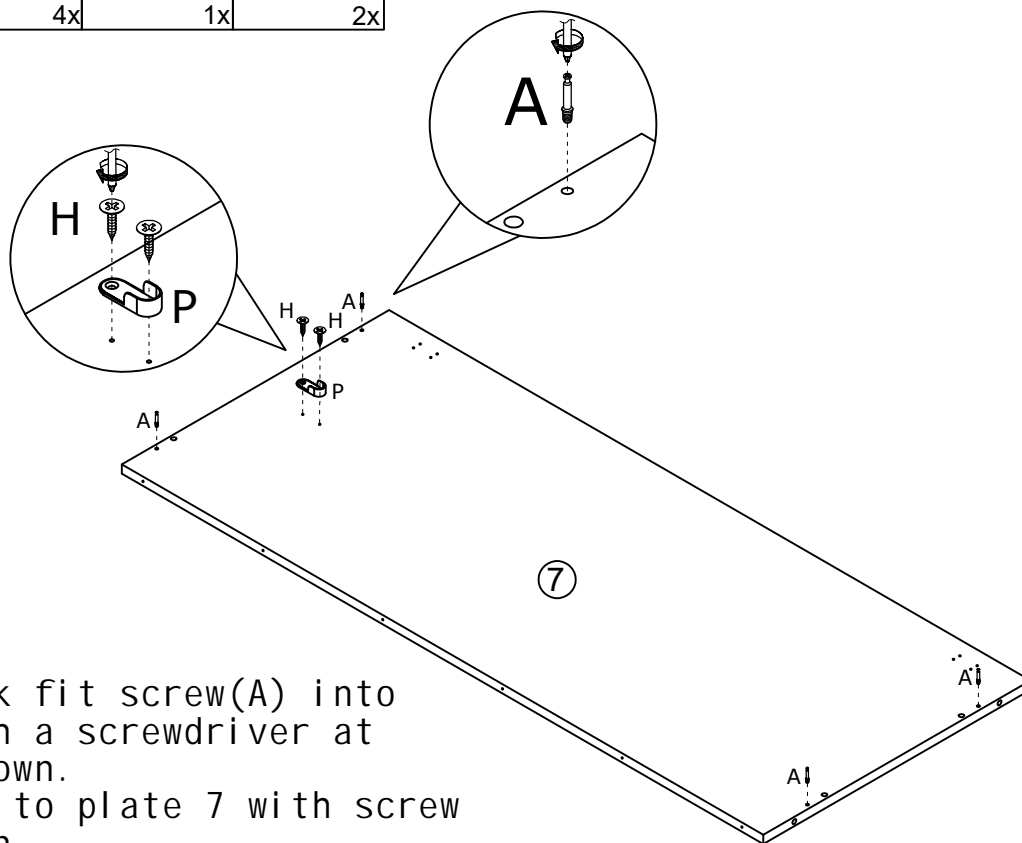
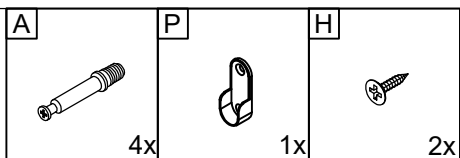
Montar el mueble sobre una superficie limpia y plana y cubrirlo con el cartón del embalaje del producto.

Montar o móvel sobre uma superfície limpa e plana e forrá-la com o papelão da embalagem do produto.

Montare il mobile su una superficie pulita e piana e rivestirla con il cartone d'imballaggio del prodotto.

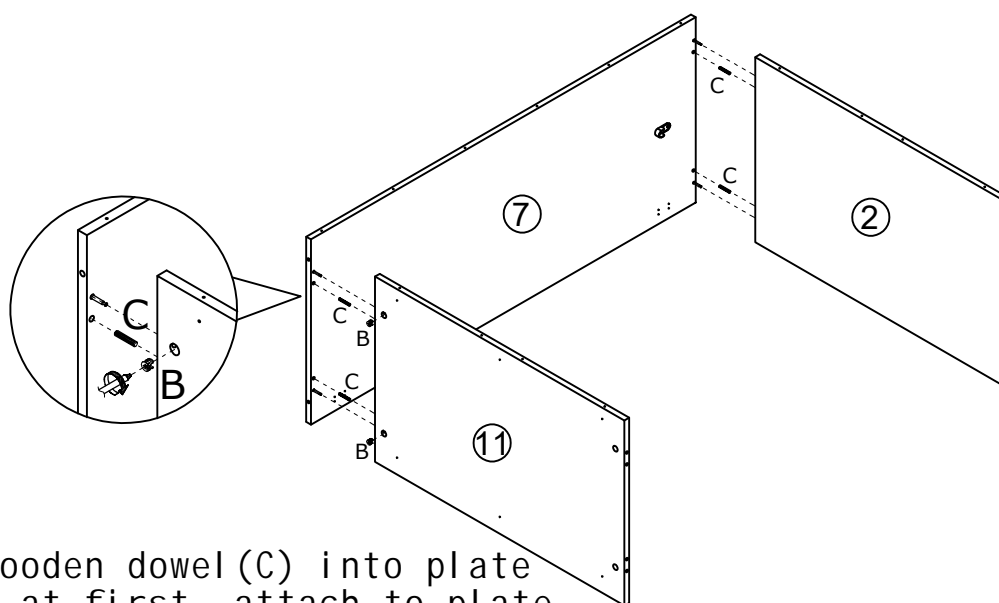
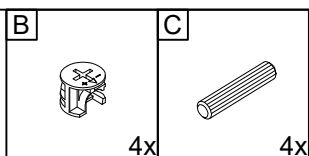


1



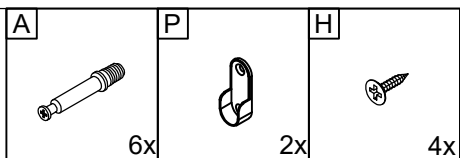
Insert quick fit screw(A) into plate 7 with a screwdriver at first as shown.
Fix part(P) to plate 7 with screw (H) as shown.

2

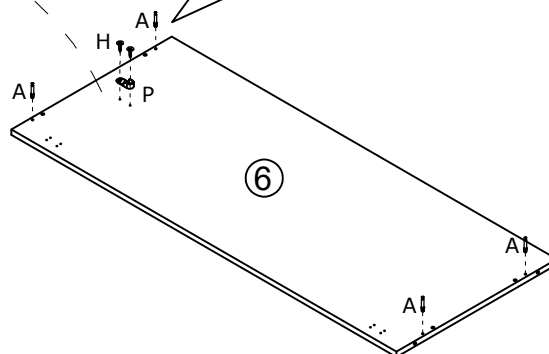
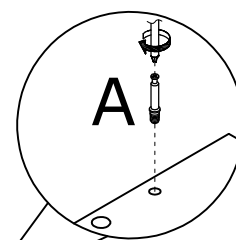
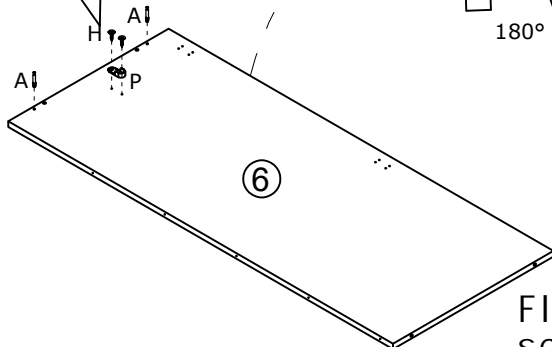
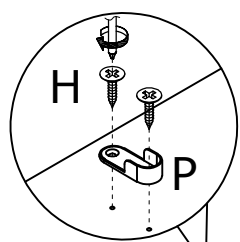


Insert wooden dowel (C) into plate 11 and 2 at first, attach to plate 7 as shown.
Put cam lock(B) into holes in plate 11 and 2, turn clockwise to tighten as shown.

3

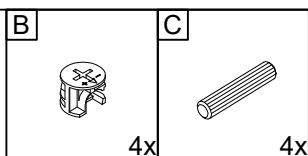


Insert quick fit screw(A) into plate 6 with a screwdriver at first as shown.
Fix part(P) to plate 6 with screw(H) as shown.

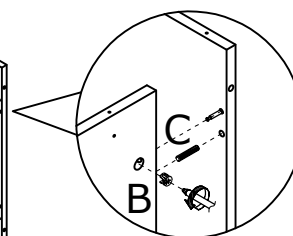
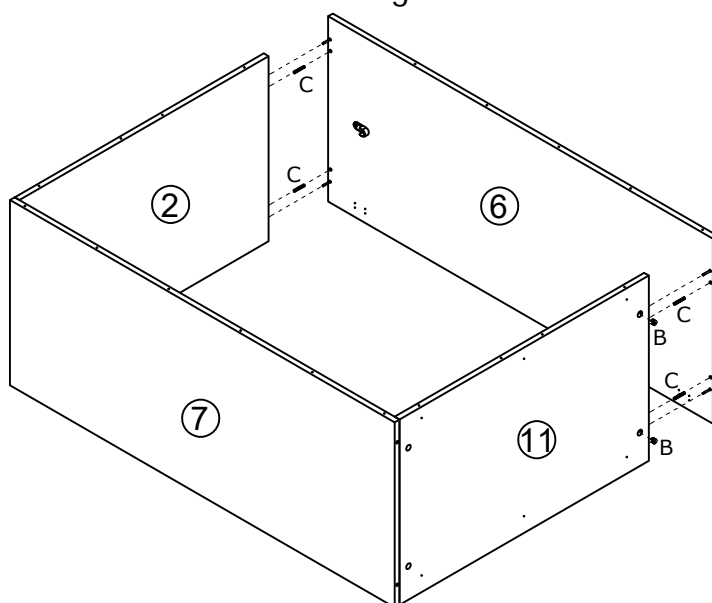


Flip the plate, insert quick fit screw(A) and Fix part(P) to plate 6 with screw(H) as well.
Please pay attention to the holes where the accessories are inserted.

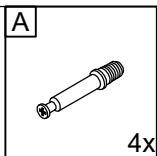
4



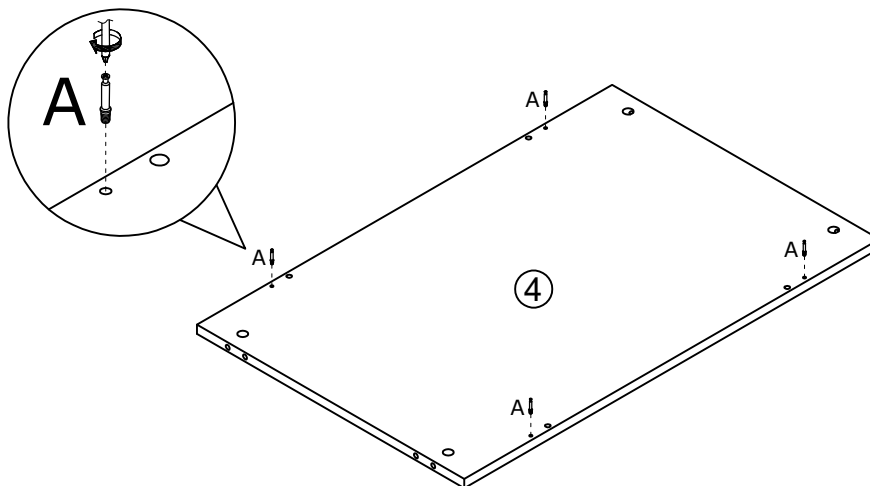
Insert wooden dowel(C) into plate 11 and plate 2 at first, attach to plate 6 as shown.
Put cam lock(B) into holes in plate 11 and 2, turn anticlockwise to tighten as shown.



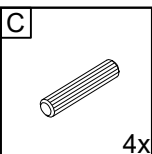
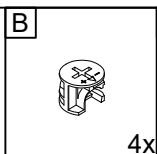
5



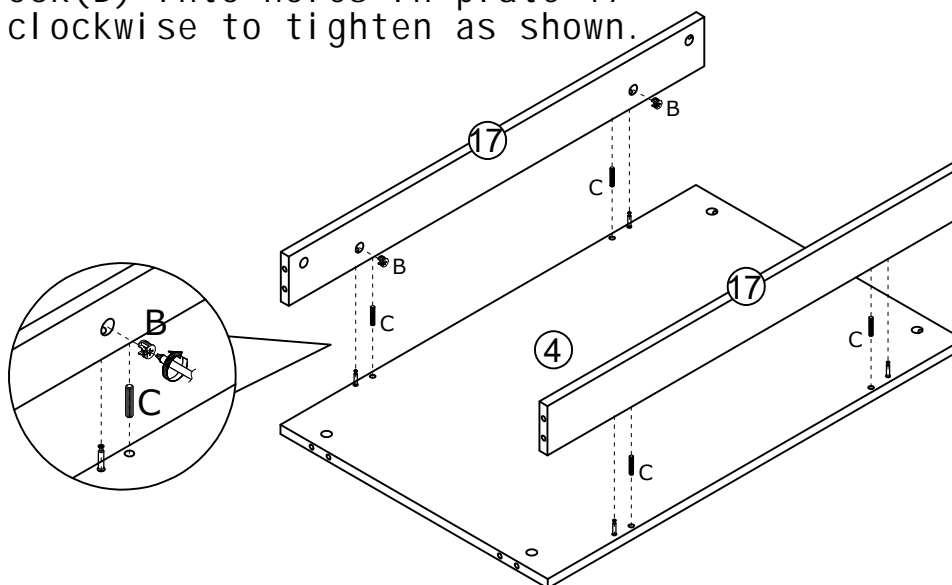
Insert quick fit screw(A) into corresponding holes in plate 4 with a screwdriver as shown. Please pay attention to the holes where the accessories are inserted.



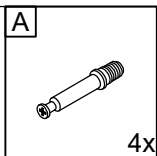
6



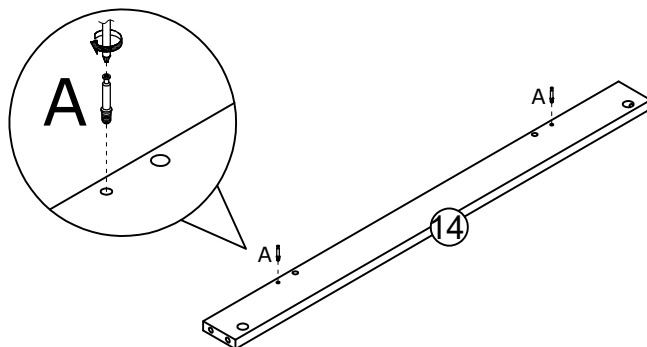
Insert wooden dowel (C) into plate 17 at first, attach to plate 4 as shown. Put cam lock(B) into holes in plate 17 and turn clockwise to tighten as shown.



7

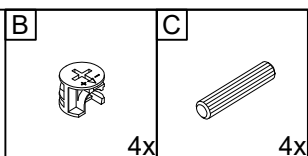


x2



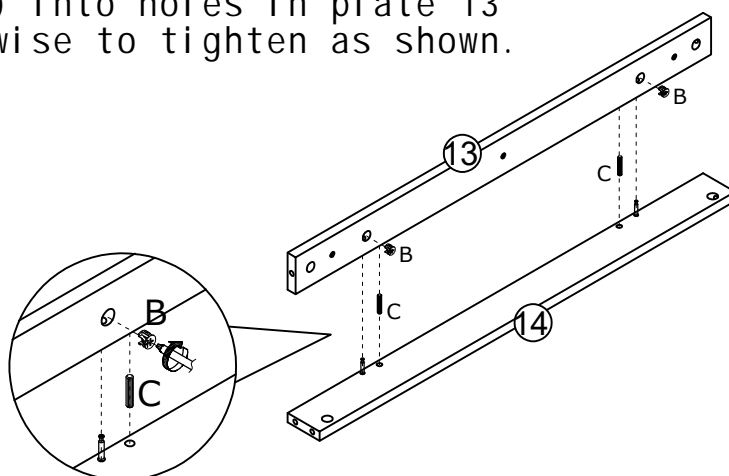
Insert quick fit screw(A) into corresponding holes in plate 14 with a screwdriver as shown. Please pay attention to the holes where the accessories are inserted.

8

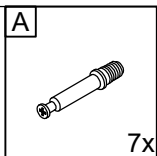


x2

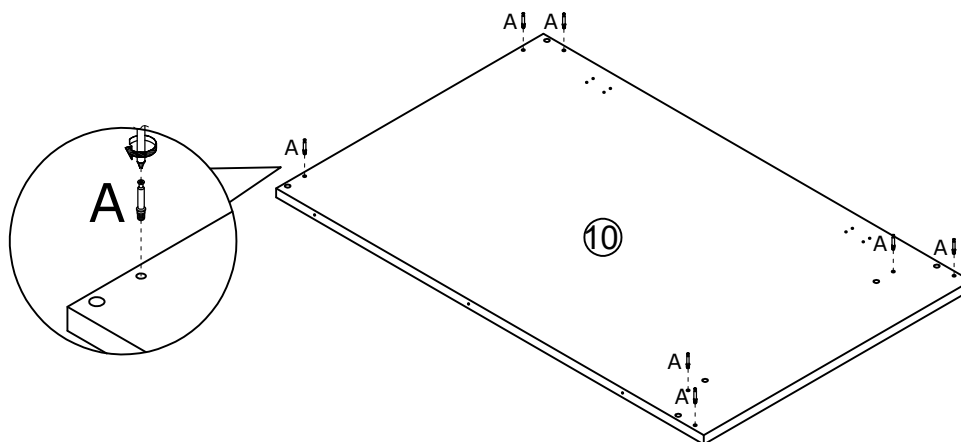
Insert wooden dowel (C) into plate 13 at first, attach to plate 14 as shown. Put cam lock (B) into holes in plate 13 and turn clockwise to tighten as shown.



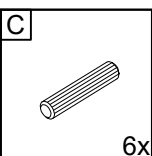
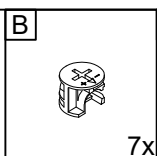
9



Insert quick fit screw(A) into corresponding holes in plate 10 with a screwdriver as shown. Please pay attention to the holes where the accessories are inserted.

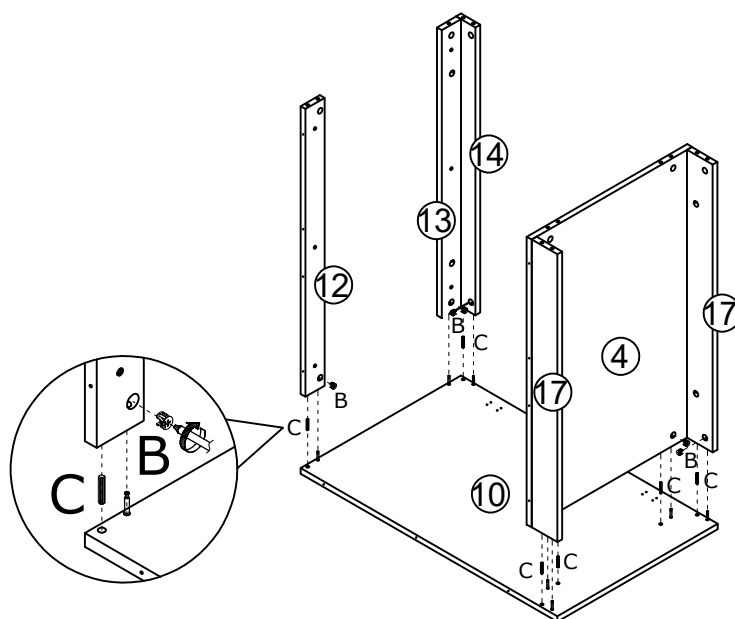


10

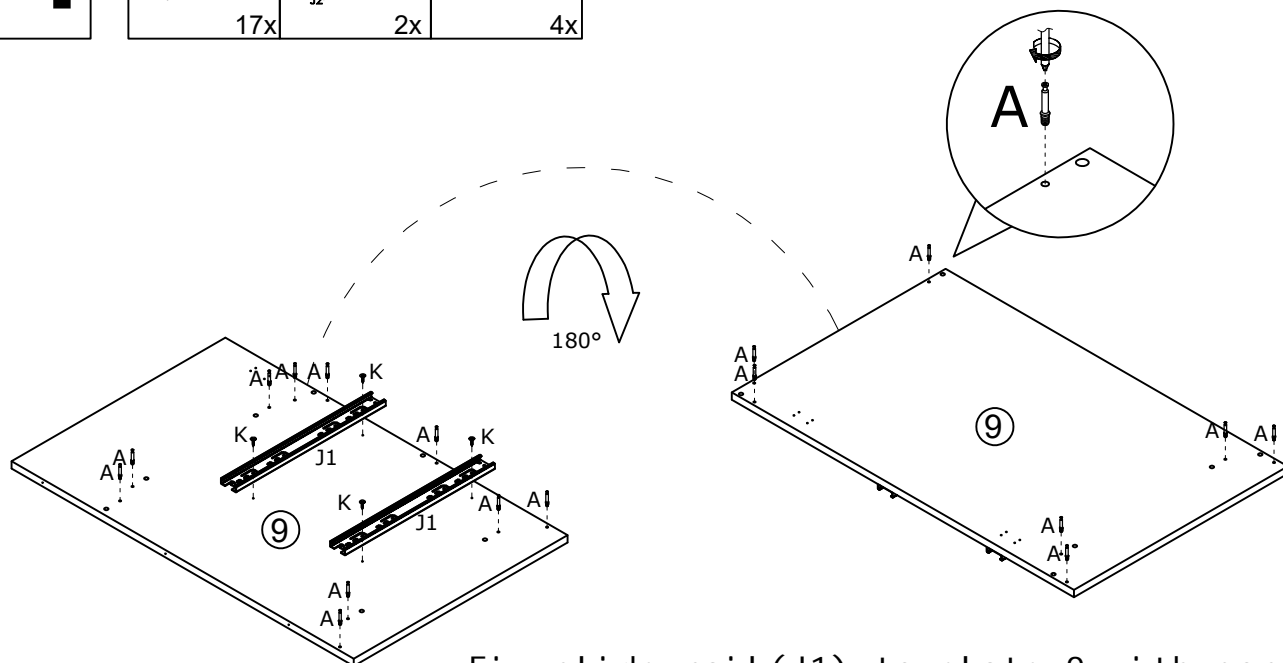
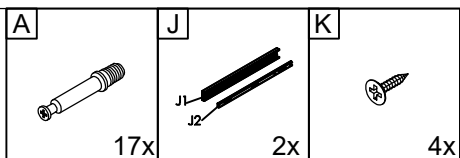


Insert wooden dowel(C) into plate 12, 14, 17 and 4 at first, attach to plate 10 as shown.

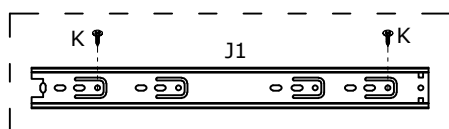
Put cam lock(B) into holes in plate 12, 13, 14, 17 and 4 and turn clockwise to tighten as shown.



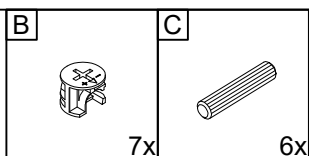
11



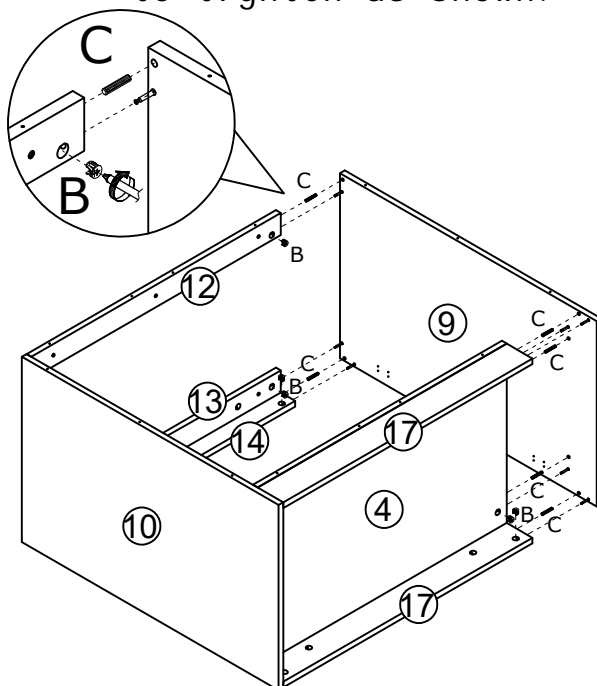
Fix slide rail (J1) to plate 9 with screw (K) and insert quick fit screw (A) at first. Flip the plate, insert quick fit screw (A) as well. Please pay attention to the holes where the accessories are inserted.



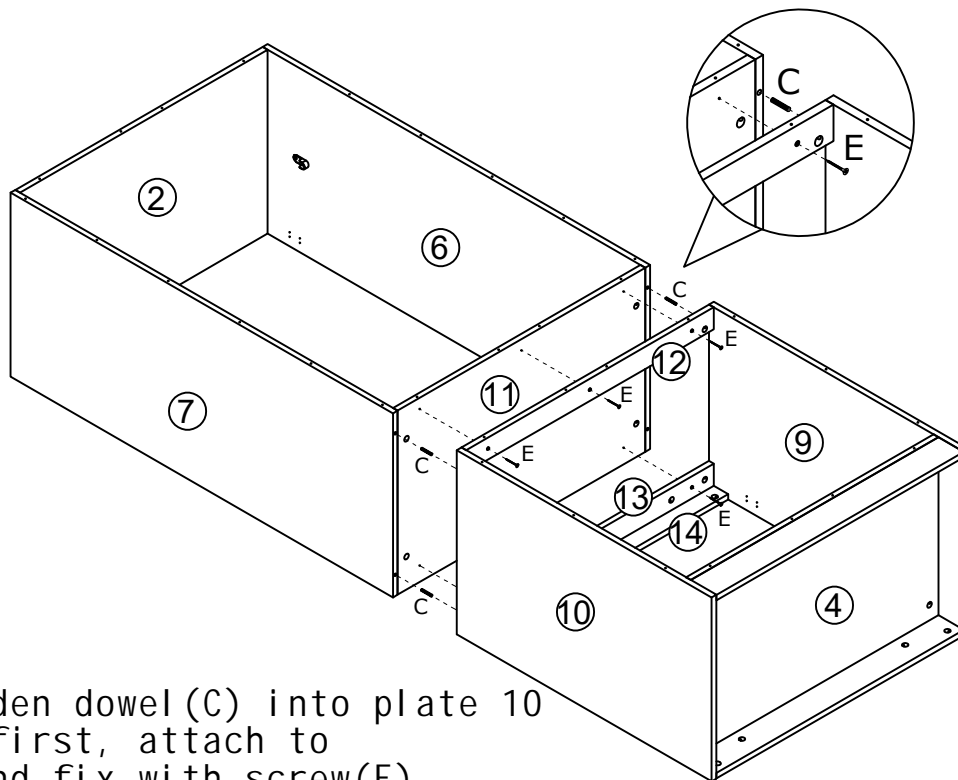
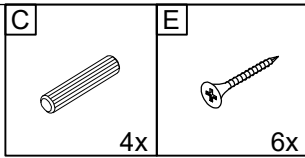
12



Insert wooden dowel (C) into plate 12, 13, 17 and 4 at first, attach to plate 9 as shown. Put cam lock (B) into holes in plate 12, 13, 14, 17 and 4 and turn clockwise to tighten as shown.

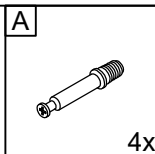


13

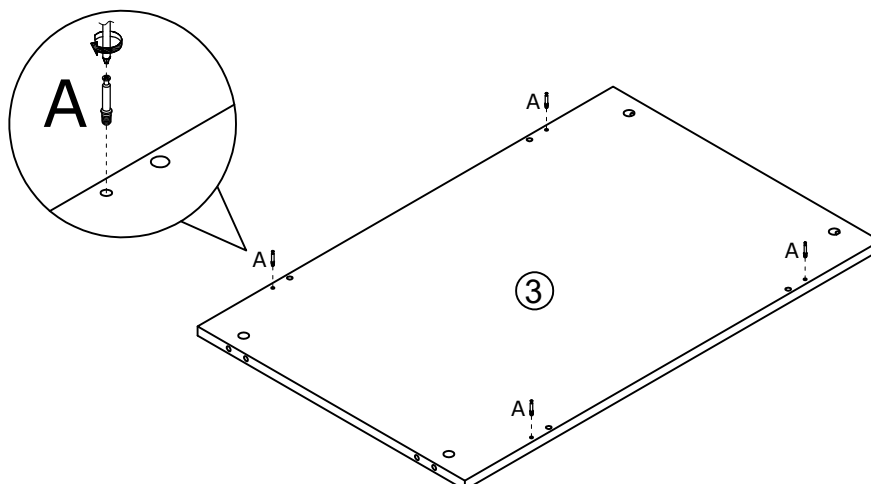


Insert wooden dowel (C) into plate 10 and 9 at first, attach to plate 11 and fix with screw (E) as shown.

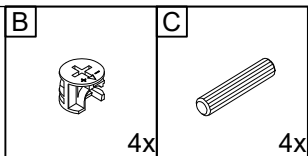
14



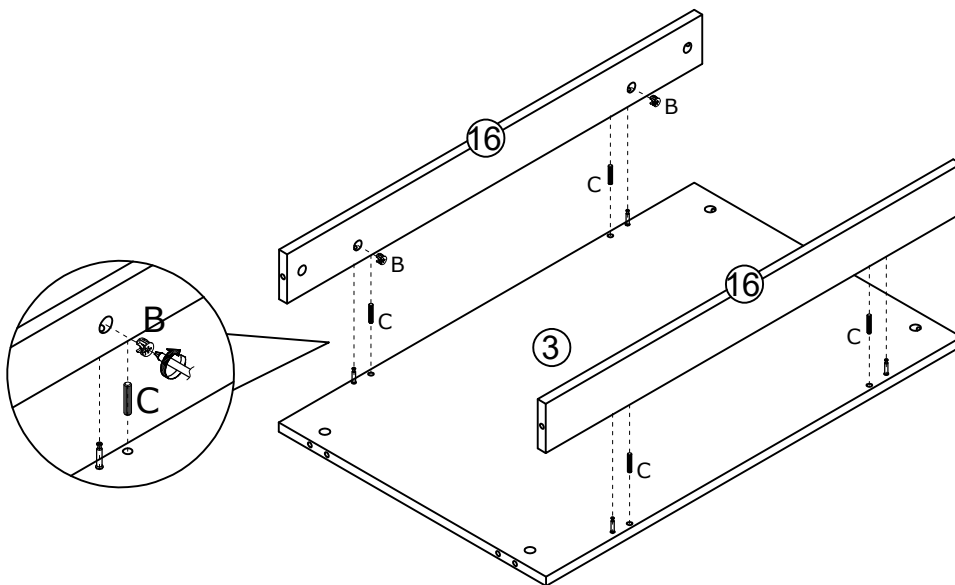
Insert quick fit screw (A) into corresponding holes in plate 3 with a screwdriver as shown. Please pay attention to the holes where the accessories are inserted.



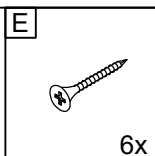
15



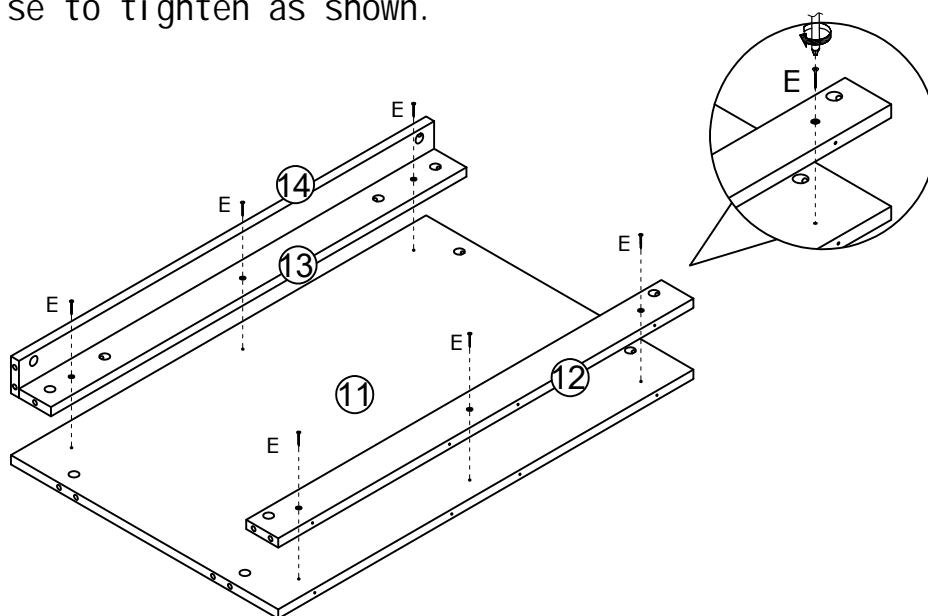
Insert wooden dowel (C) into plate 16 at first, attach to plate 3 as shown. Put cam lock (B) into holes in plate 16 and turn clockwise to tighten as shown.



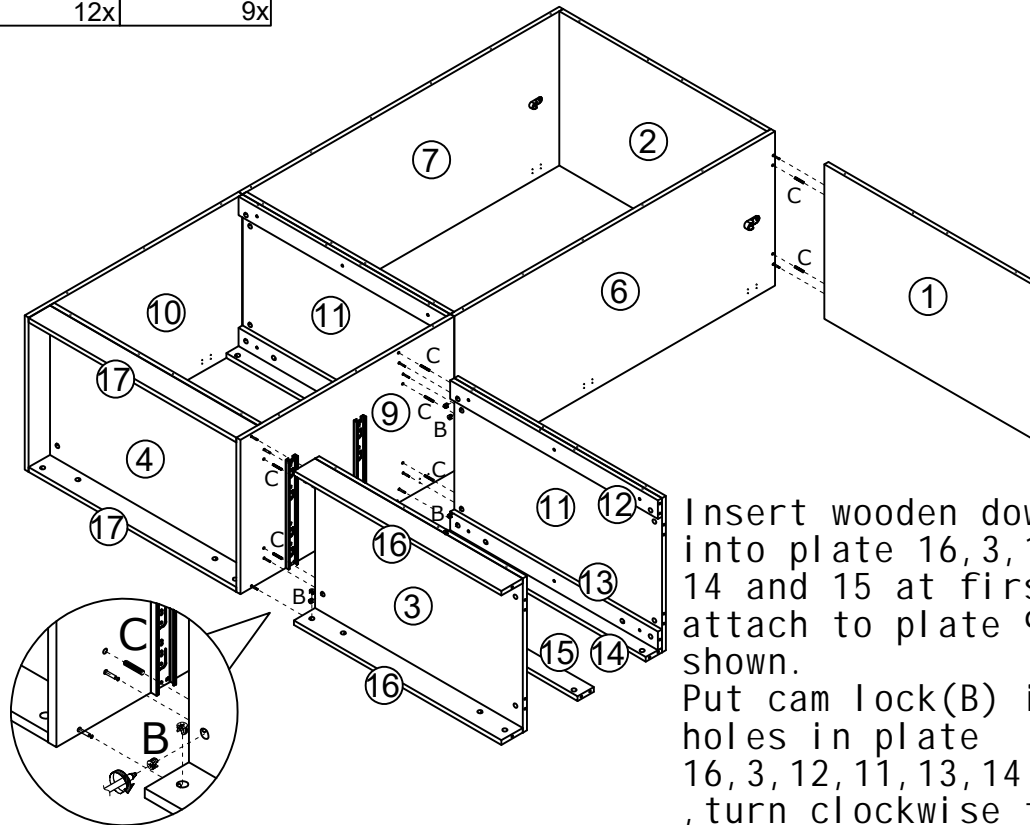
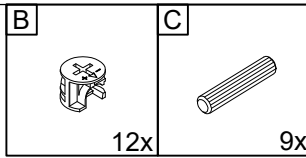
16



Fix plate 12, 13 to plate 11 with screw (E) and turn clockwise to tighten as shown.

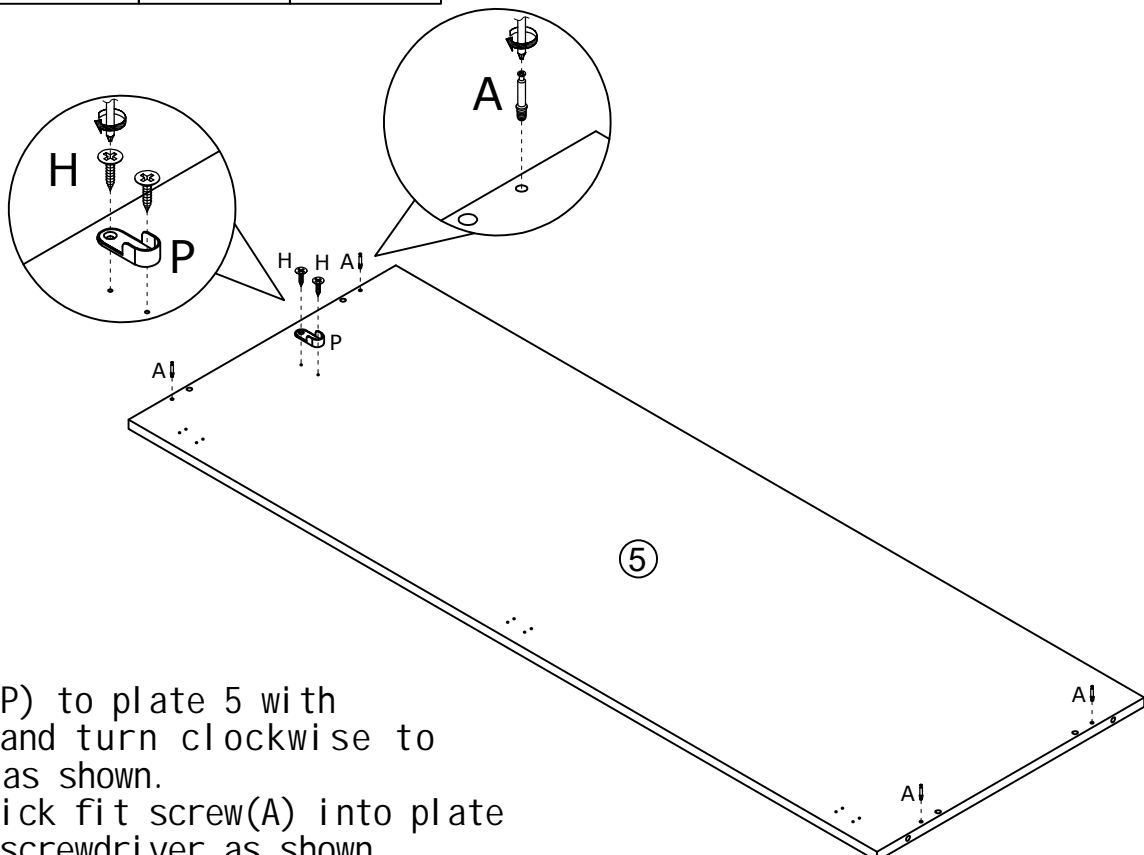
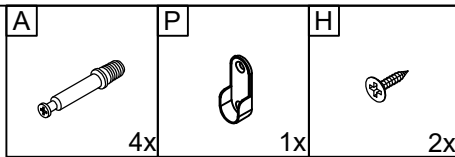


17



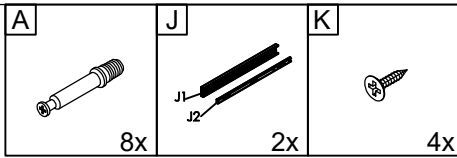
Insert wooden dowel (C) into plate 16, 3, 11, 12, 14 and 15 at first, attach to plate 9 as shown.
Put cam lock (B) into holes in plate 16, 3, 12, 11, 13, 14 and 15, turn clockwise to tighten as shown.

18

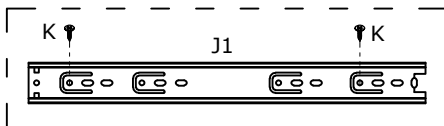
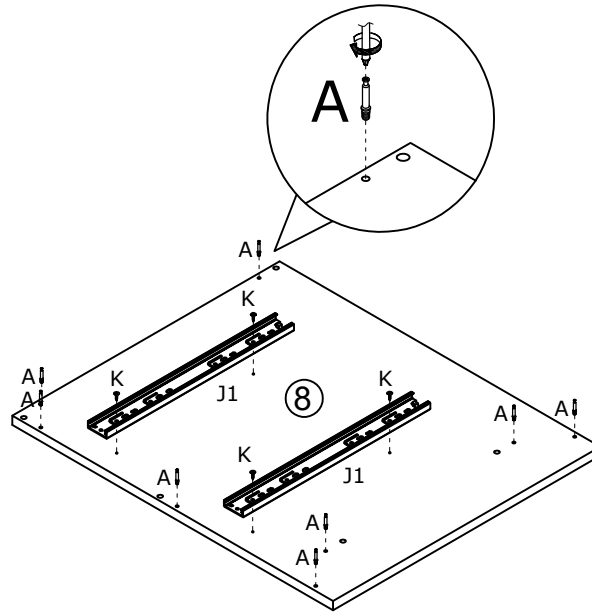


Fix part (P) to plate 5 with screw (H) and turn clockwise to tighten as shown.
Insert quick fit screw (A) into plate 5 with a screwdriver as shown.

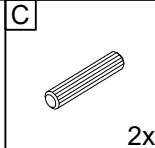
19



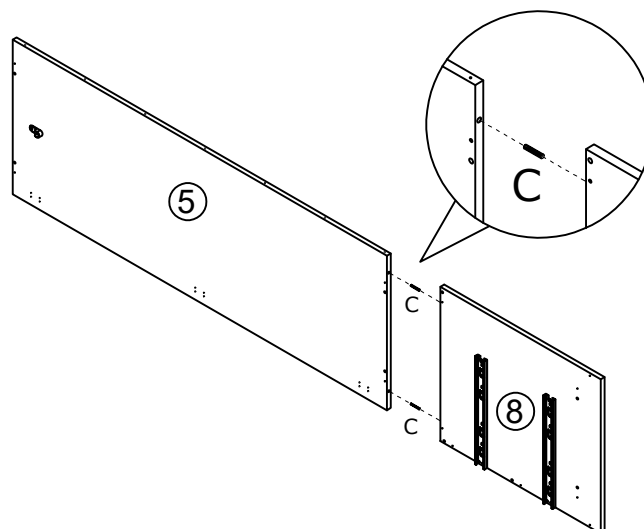
Fix runner(J1) to plate 8 with screw(K) as shown. Insert quick fit screw(A) into plate 8 as shown.



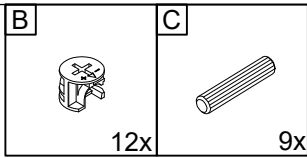
20



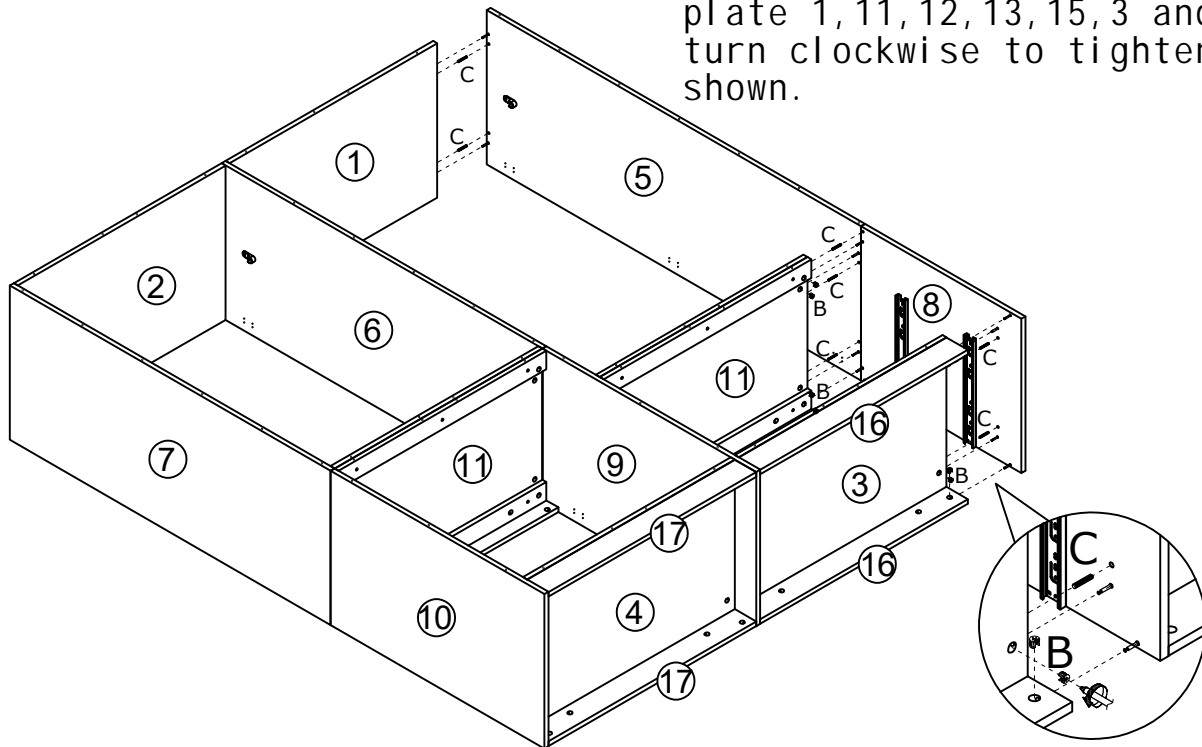
Insert wooden dowel (C) into plate 8 at first and attach plate 5 as shown.



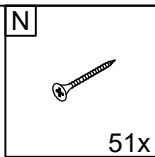
21



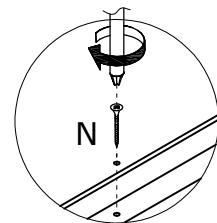
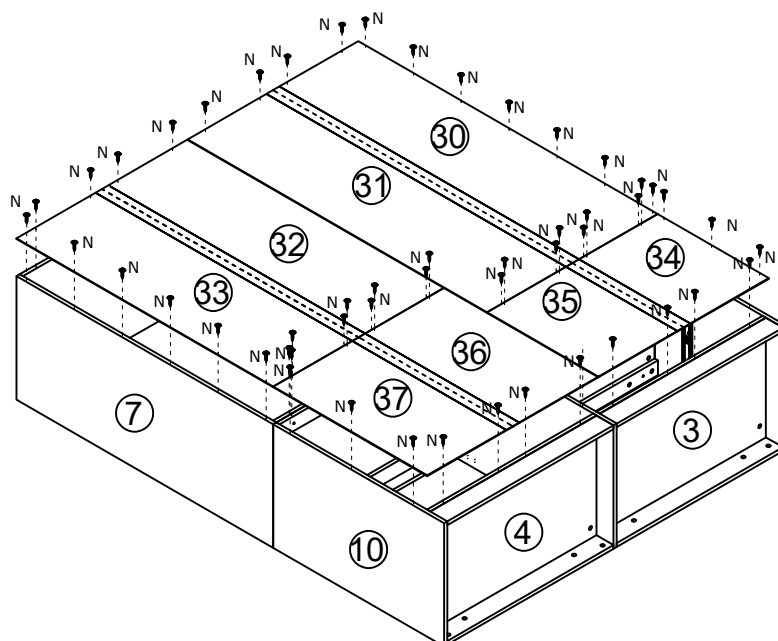
Insert wooden dowel (C) into plate 1, 11, 12, 13, 15 and 3 at first, attach to plate 5 and 8 as shown.
Put cam lock (B) into holes in plate 1, 11, 12, 13, 15, 3 and 16, turn clockwise to tighten as shown.



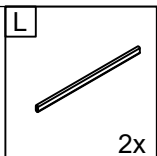
22



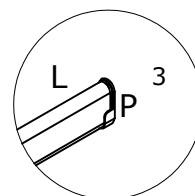
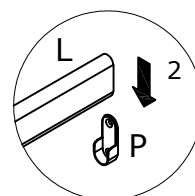
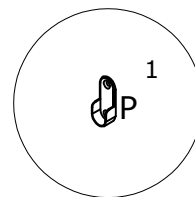
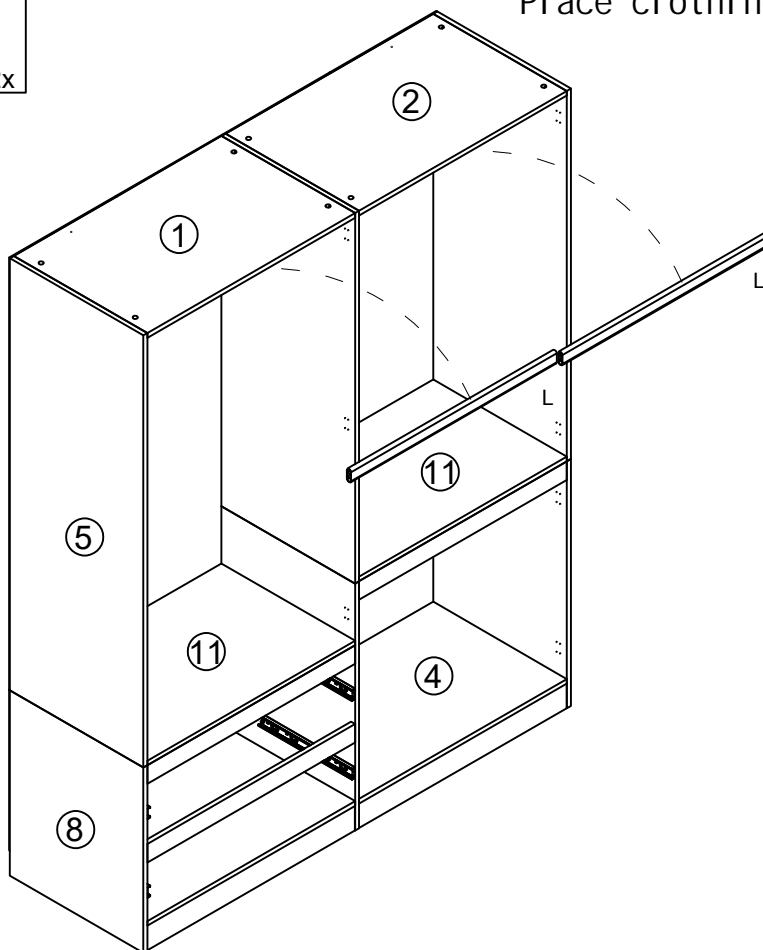
Fix back plate 30, 31, 32, 33, 34, 35, 36 and 37 with screw (N) as shown.



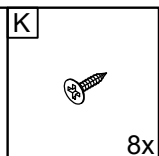
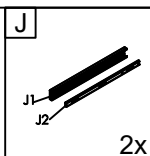
23



Place clothing rod(L) as shown.

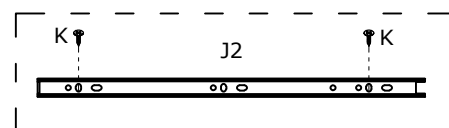
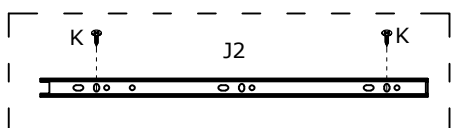
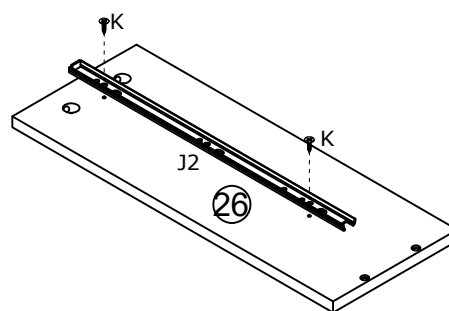
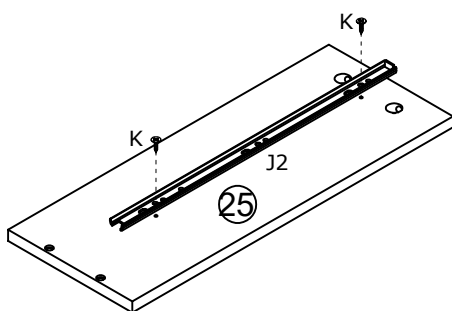


24

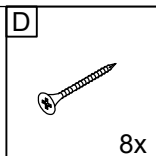


x2

Fix slide rail (J2) to plate 25 and 26 with screw (K) as shown.

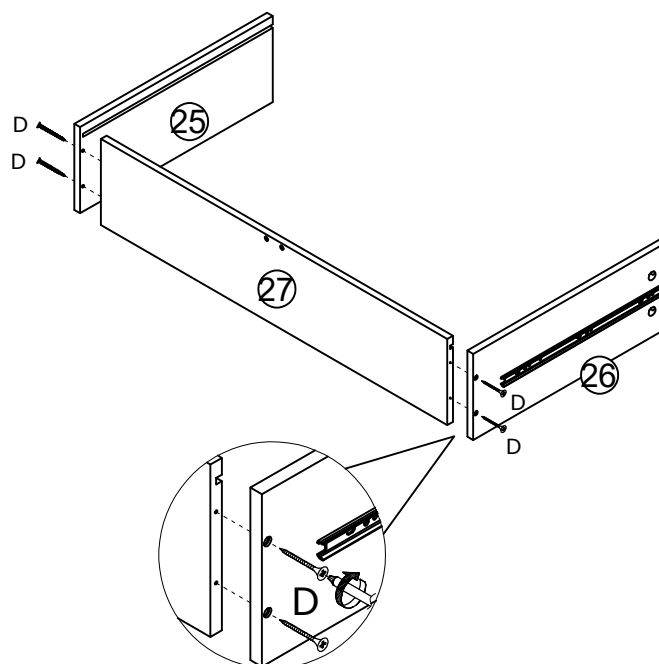


25



x2

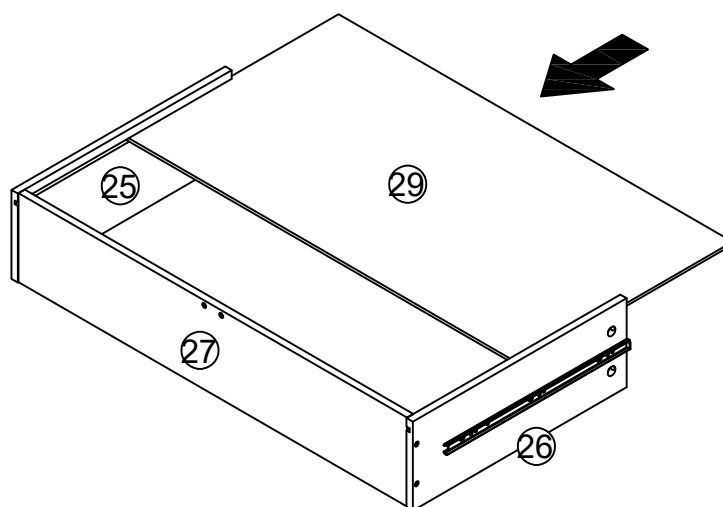
Fix plate 25,26 to plate 27 with screw(D) and turn clockwise to tighten as shown.



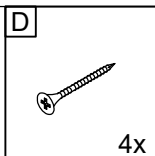
26

x2

Slide plate 29 along grooves as shown.

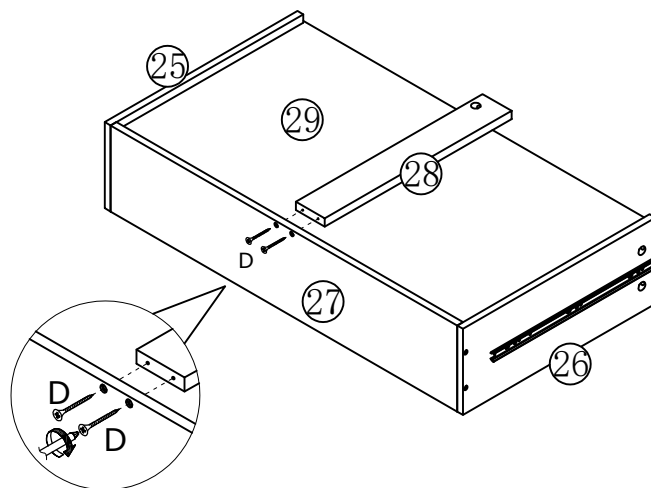


27

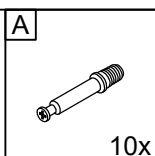


x2

Fix plate 28 to plate 27 with screw(D) as shown.

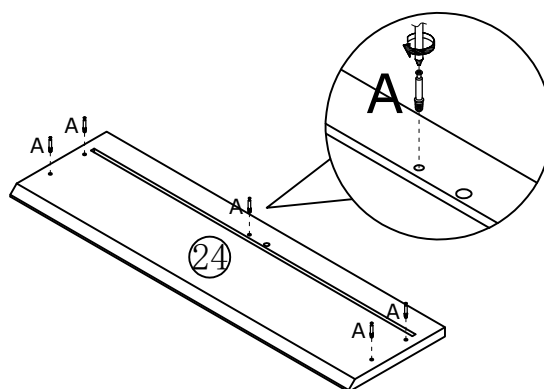


28

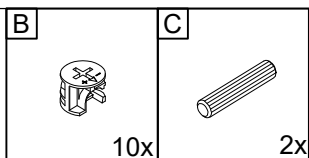


x2

Insert quick fit screw(A) into plate 24 as shown.

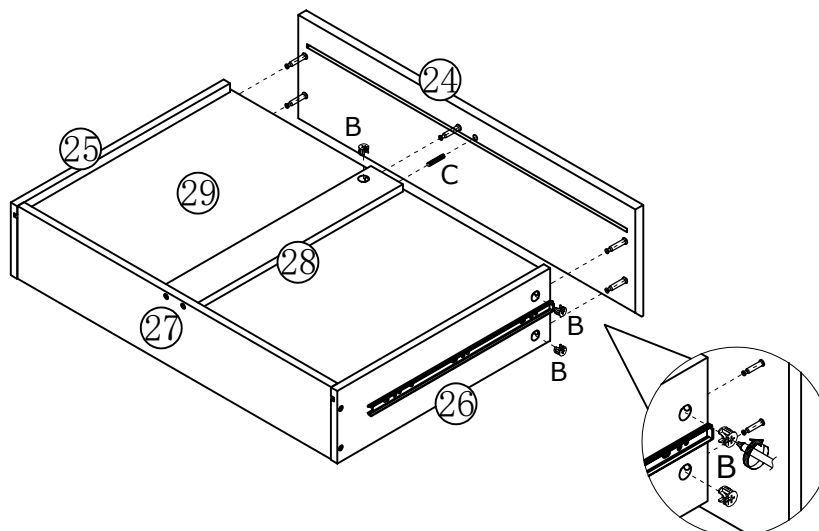


29



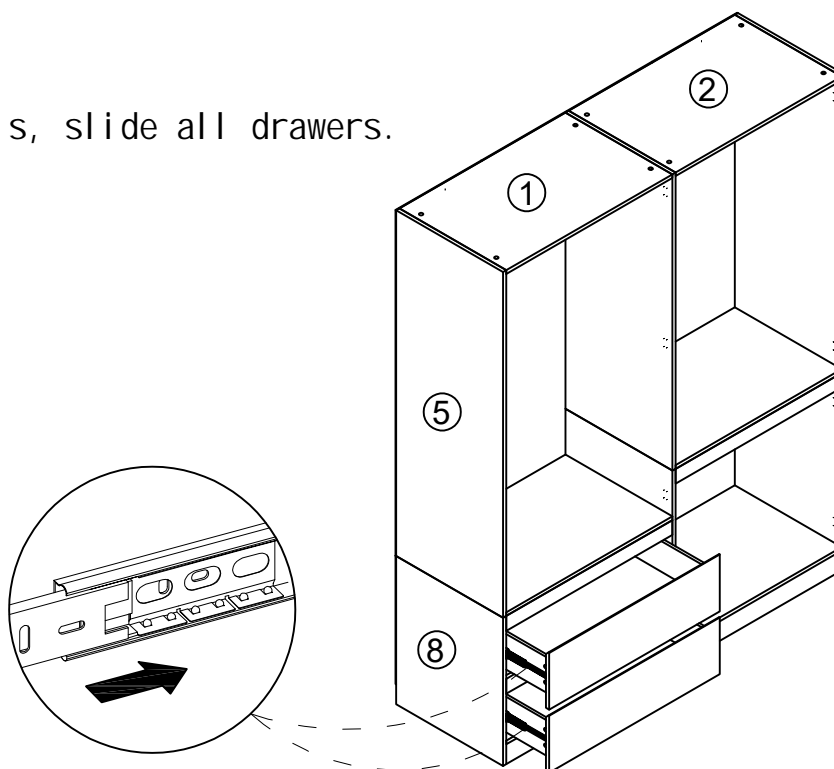
x2

Insert wooden dowel (C) into plate 28 at first, attach to plate 24 as shown.
Put cam lock (B) into holes in plate 25, 28 and 26, turn clockwise to tighten as shown.

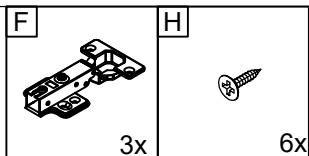


30

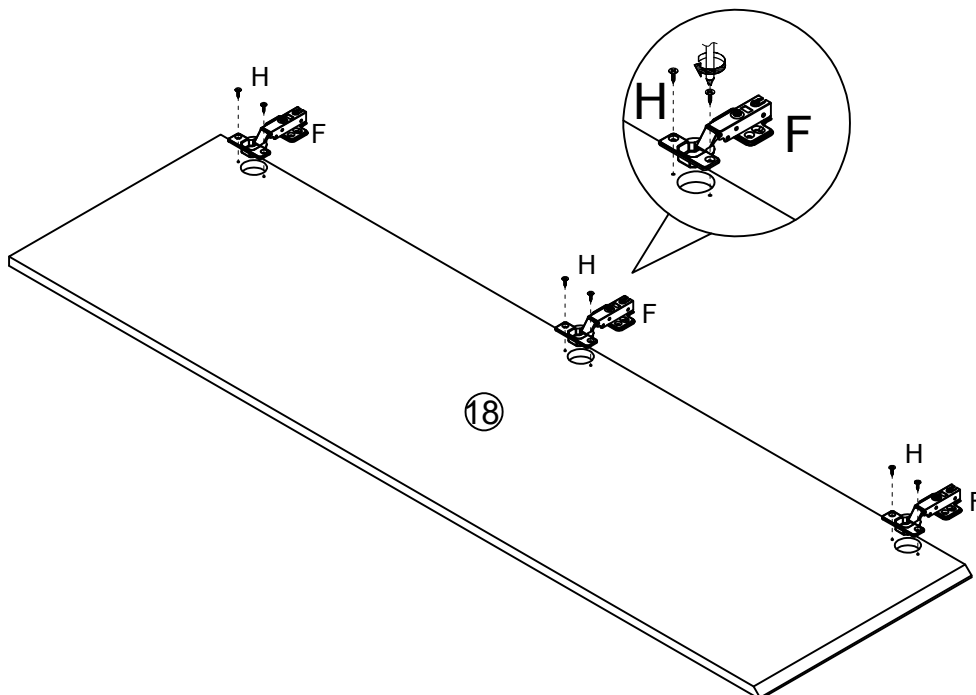
Align rails, slide all drawers.



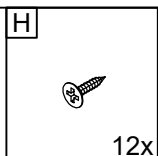
31



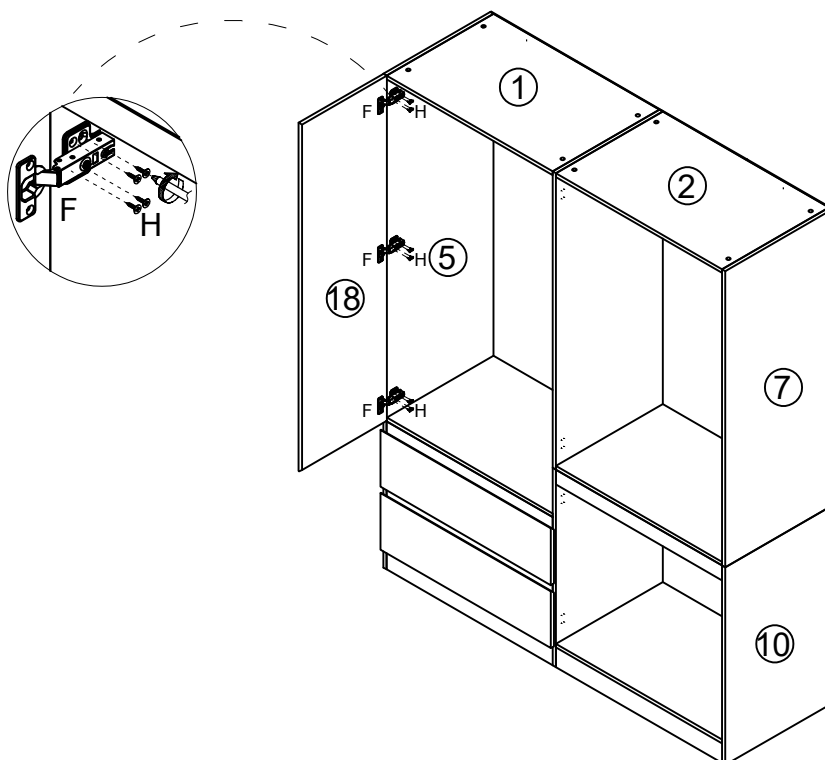
Fix hinge(F) to plate 18 with screw(H) as shown.



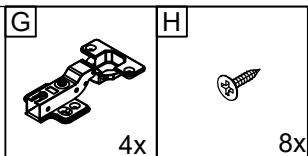
32



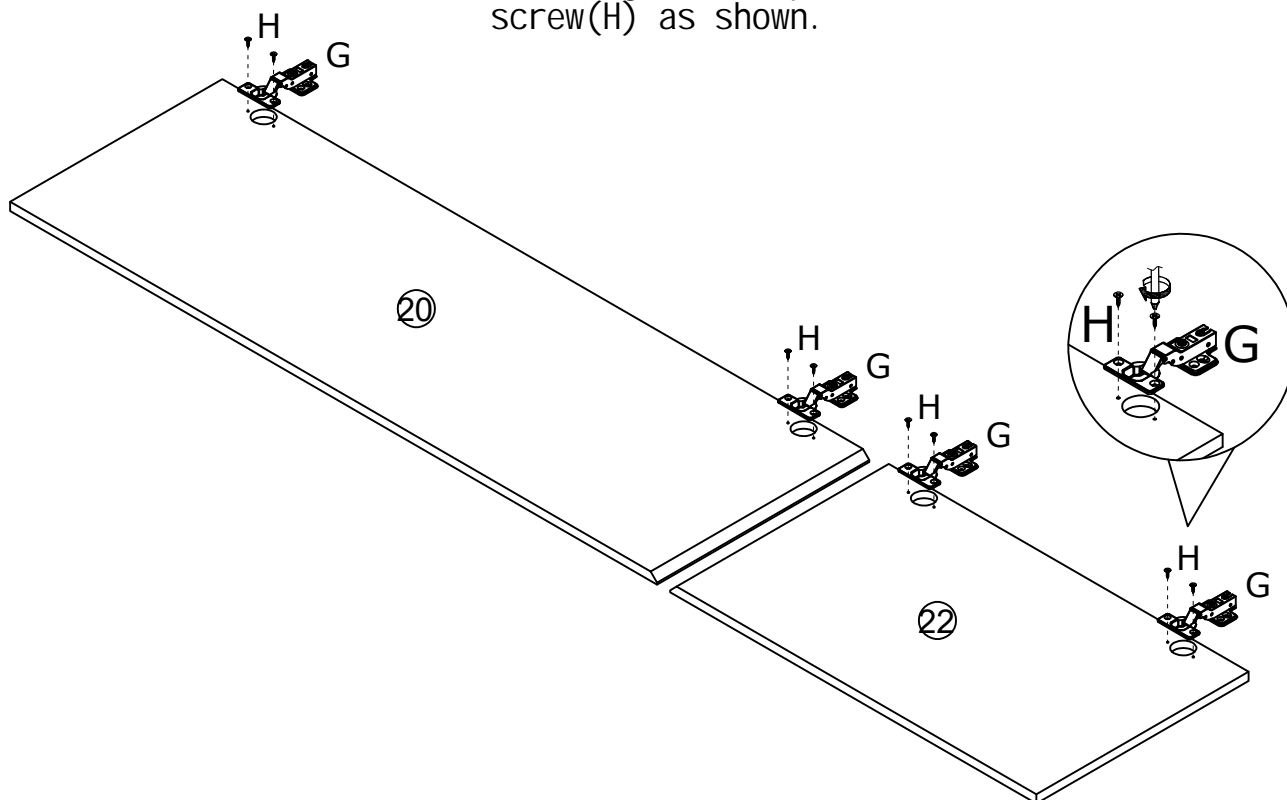
Attach the door plate to plate 5 by fixing hinge(F) with screw(H) as shown.



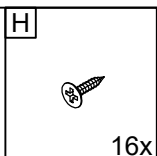
33



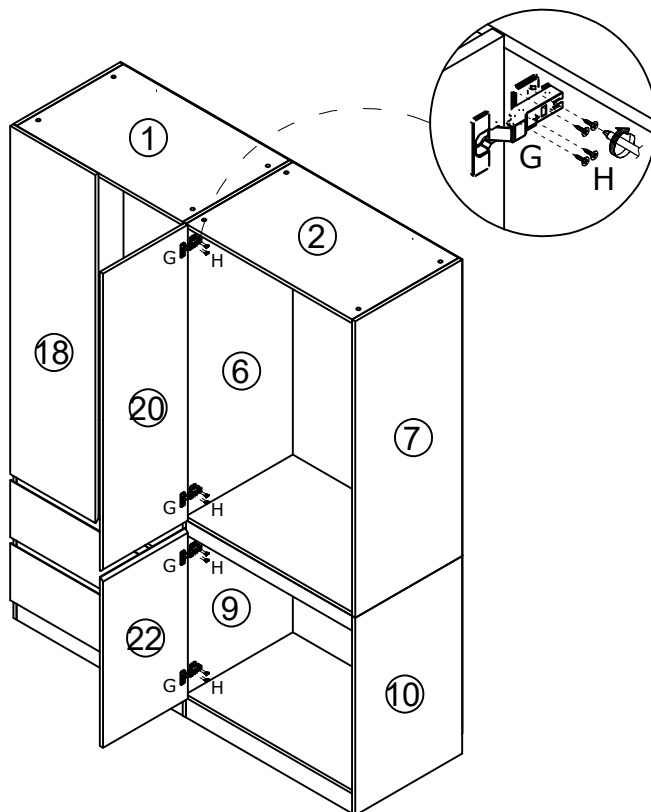
Fix hinge(G) to plate 20 and 22 with screw(H) as shown.



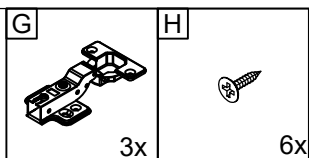
34



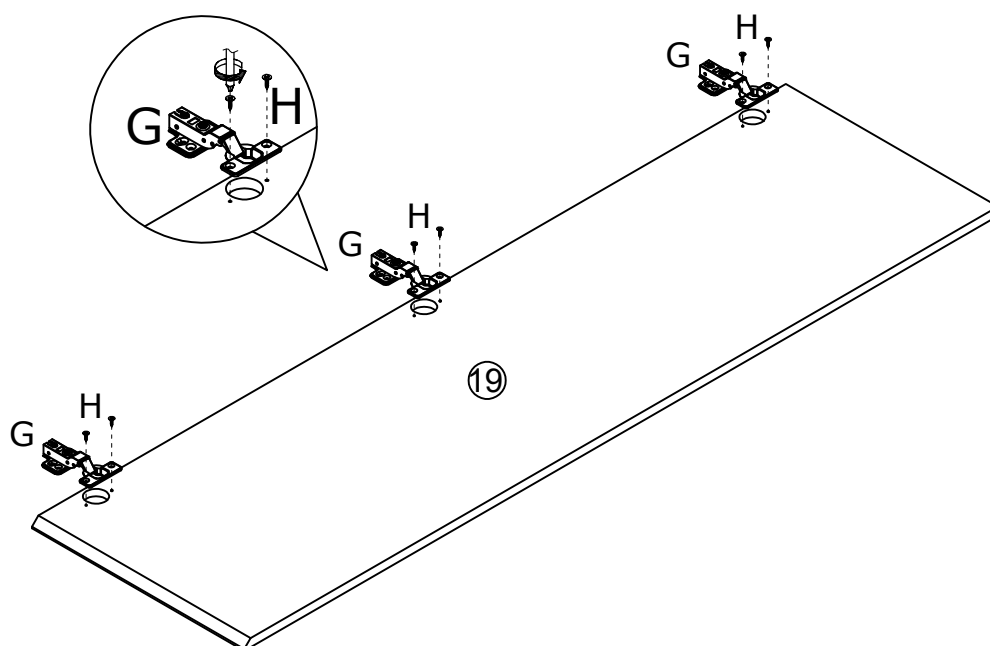
Attach the door plate to plate 6 and 9 by fixing hinge(G) with screw(H) as shown.



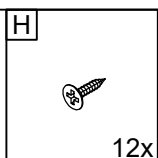
35



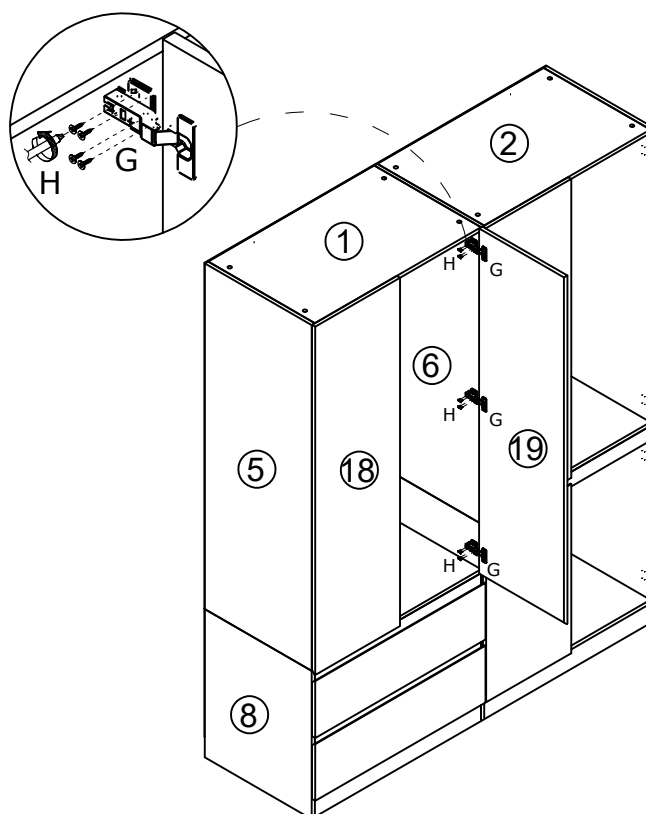
Fix hinge(G) to plate 19 with screw(H) as shown.



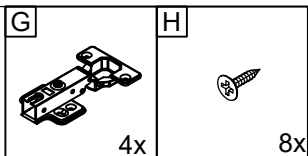
36



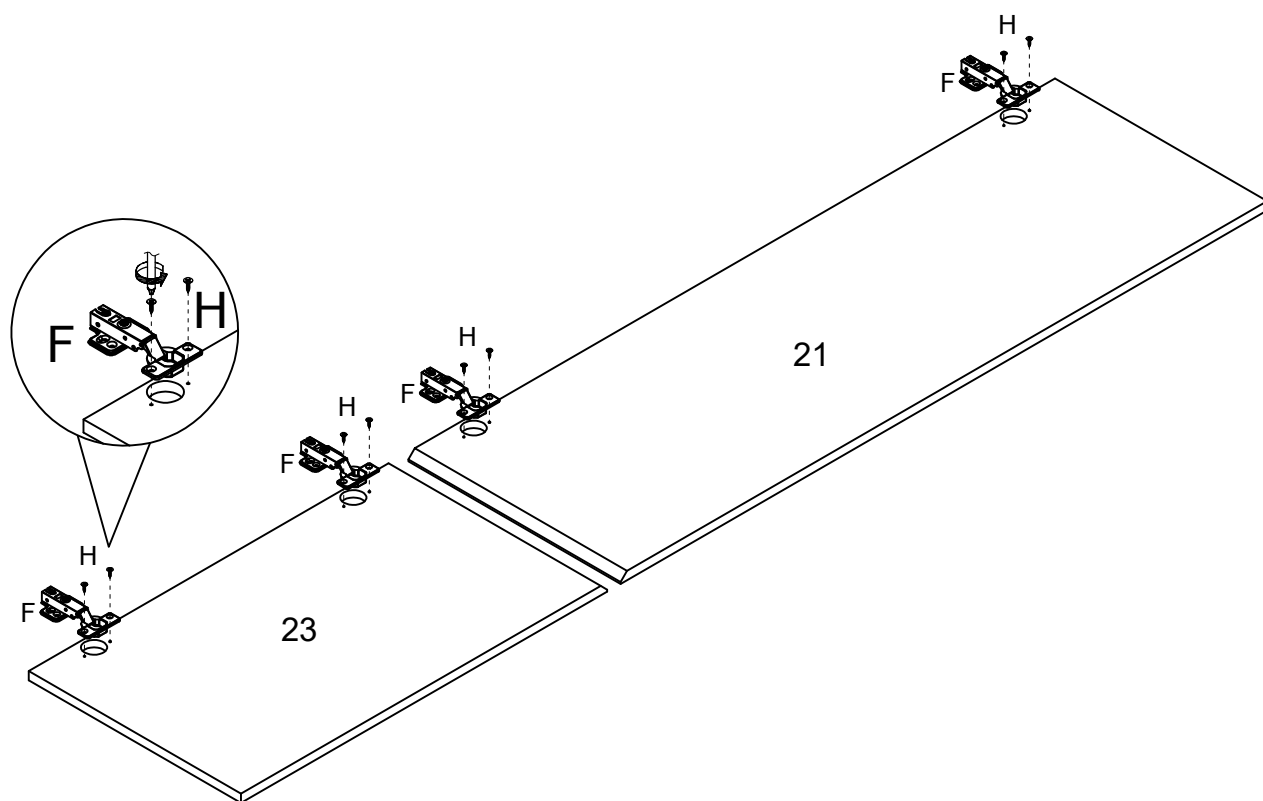
Attach the door plate to plate 6 by fixing hinge(G) with screw(H) as shown.



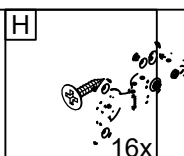
37



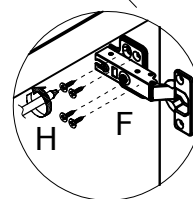
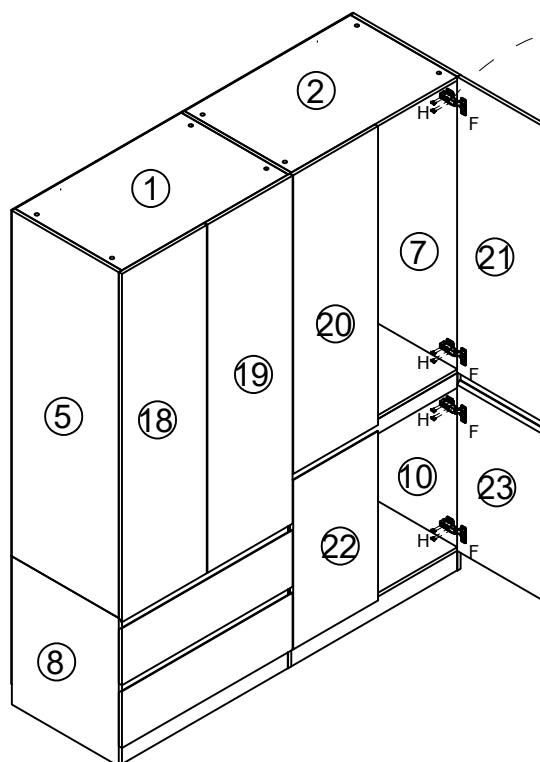
Fix hinge(G) to plate 21 and 23 with screw(H) as shown.

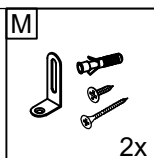


38



Attach the door plate to plate 7 and 10 by fixing hinge(G) with screw(H) as shown.





Install anti-tipping device(M) as shown.

