

# Mirror introduction



## Function Indicatop

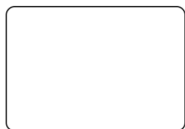
1. short press the light button, turn the light on/ off, and quickly touch and turn it off within three seconds. Change the color temperature, press and hold to adjust the brightness and darkness
2. Short press the anti-fog button to turn on/off the anti-fog
3. In standby mode, press and hold the anti-fog button to enter the setting mode , and lightly press the anti-fog button ,Key increase/decrease, press and hold to save settings

## Installation Instruction

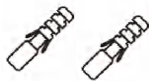
Before  
Installation

- \* Please make sure that the installed wall is a load bearing wall.
- \* Please attention to avoid wires or water pipes when drilling.

## Product and accessories



Mirror\*1



Expansionscrew\*2



Screw\*2

## Tools Needs (not included in the package)



Pencil



Electric Drill



Hammer



Tapeline

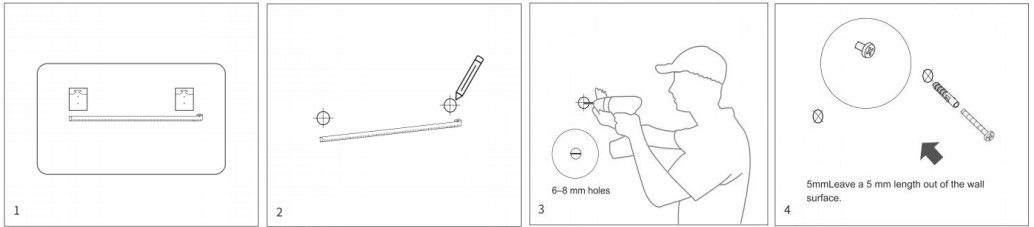


Level Ruler



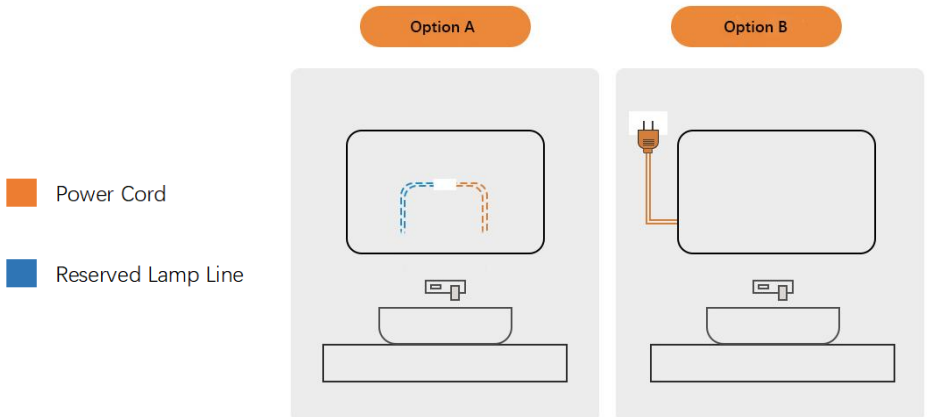
Screwdriver

# Mirror introduction



1. Measure the hanger spacing. Measure the distance between 2 hangers with a tape measure.
2. Mark drilling locations. Determine the specific locations of drilling with a tape measure, and mark it out with a pencil.
3. Drill holes with a percussion drill. Drill 6-8 mm holes in the wall at marked locations with a percussion drill.
4. Put an expansion tube into each hole and put a screw into each tube. Strike expansion tubes into drill holes with hammer and put screws into expansion tubes with a screwdriver. Leave a 5 mm length out of the wall surface.

## Wiring Instructions



Cut out the plug and the reserved wire connection port, which can be hidden on the back of the mirror

The mirror plug is directly plugged into the wall socket for use (the socket cannot be on the back of the mirror)