

# LED Indoor Luminaires Ceiling Mount – Pendants 120-277VAC / 60Hz

## Safety Precautions

- Read all safety precautions and installation instructions carefully before installing or servicing this fixture. Failure to comply with these instructions could result in potentially fatal electric shock and/or property damage.
- It is recommended that a qualified electrician perform all wiring. This fixture must be wired in accordance with all national and local electrical codes.
- Do not handle any energized fixture or attempt to energize any fixture with wet hands or while standing on a wet or damp surface or in water.
- This fixture is designed for use in a 120-277VAC, 60Hz fused circuit. The fixture with D1 in the SKU will be compatible with Triac (forward-phase or leading edge) / ELV (reverse phase or trailing edge). Other models with D2 in the SKU will only be compatible with 0-10 V dimmers.
- Make sure that the power source conforms to the requirements of the fixture. (See labels on the fixture housing).
- To reduce the risk of electrical shock, and to assure proper operation, this fixture must be adequately grounded. To accomplish proper grounding, there must be a separate ground wire (green) contact between this fixture and the ground connection of your main power supply panel.
- This fixture is intended to be used for general indoor lighting in dry or damp locations.
- Disclaimer

Changes or modifications not expressly approved by the party responsible for compliance could void the user's authority to operate the equipment. NOTE: This equipment has been tested and found to comply with the limits for a Class B digital device, pursuant to Part 15 of the FCC Rules and Canadian ICES-005 (B) / NMB-005 (B). These limits are designed to provide reasonable protection against harmful interference in a residential installation. This equipment generates, uses and can radiate radio frequency energy and, if not installed and used in accordance with the instructions, may cause harmful interference to radio communications. However, there is no guarantee that interference will not occur in a particular installation. If this equipment does cause harmful interference to radio or television reception, which can be determined by turning the equipment off and on, the user is encouraged to try to correct the interference by one or more of the following measures:

- Reorient or relocate the receiver antenna.
- Increase the separation between the equipment and receiver.
- Connect the equipment into an outlet on a circuit different from that to which the receiver is connected.
- Consult with the dealer or an experienced radio/TV technician for help.

Any modifications to this fixture may void the warranty and interfere with the safe operation of the luminaire.

Operation is subject to the following two conditions: (1) this device may not cause interference, and (2) this device must accept any interference, including interference that may cause undesired operation of the device.

## Assembly Instructions

### Step 1 – Preparing for Installation

- Disconnect electrical power before installing or servicing any part of this fixture.
- Carefully remove fixture and parts bag from carton.
- Remove components from the part bag.
- Install the mounting bracket (1) to the junction box (not included) on the ceiling using two screws (2) to secure it.
- For EGRF16 model, remove plastic mounting plate on the back of the fixture by turning counterclockwise. This part will be replaced with the new plastic cover (10) in Step 2 D.
- For EGRF24 model, remove the metal mounting plate on the back of the fixture by turning counterclockwise. This part will be reused in Step 2 E.

View shown for reference only. Individual models may vary.

### Step 2 – Assembling Fixture (Fig 1 & 2)

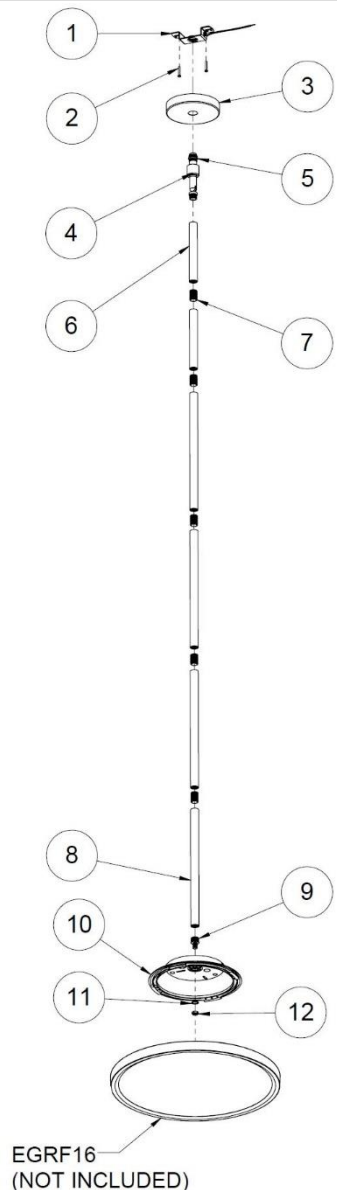
- Identify your fixture model EGRF16 or EGRF24 then proceed accordingly to corresponding illustration of Fig 1 or Fig 2.
- Determine drop height from the ceiling to bottom of the fixture to assemble stems section. The stems consist of 4x 12" and 2x 6" pipe for a total of 60" long section will require to be assembled to the fixture. **Note: Consult factory for additional stem if longer stems are required (sold separately).**
- Connect all stems (6, 7, 8) together and to the swivel part (5) and to the reducer nipple (9) by turning clockwise to secure it. **Note: two different length reducer nipple (9) and two different cover (10) provided but only one of each will be used depending on the fixture models purchased. Discard spare parts if not used.**
- For EGRF16 model, install new plastic cover (10) to the reducer long nipple (9) by using lock washer (11) and jam nut (12) to secure it per Fig1. Discard original mounting plate.
- For EGRF24 model, insert metal cover (10) over the stem first then install original metal mounting plate (11) to the reducer short nipple (9) by using lock washer (12) and jam nut (13) to secure it per Fig 2. Discard spare parts if not used.
- Discrete power wires in black and white color are pre-cut from factory to 108" long. For D2 model only, additional grey and purple color wires are included for 0-10V dimming option. Feed all wires inside the stems section and allow about 7" to protrude from the bottom for splicing to the fixture. Match same color wires from the stem with the wires from the fixture for electrical connections using wire nuts (provided) to secure it. **Note: 108" wire length provided. Refer to Step 3 C before making final cut of the power wires.**
- For EGRF16 model, install the fixture to the cover (10) by turning clockwise to lock and secure it. All splicing must be hidden inside the cover.
- For EGRF24 model, install the fixture to the metal mounting plate (11) by turning clockwise to lock and secure it. Then lower the metal cover (10) on top of the metal mounting plate. Using Allen wrench (provided) to secure it. All splicing must be hidden inside the cover (10).

### Wiring – All wiring must take place inside junction box (not included)

**Caution:** Make sure power is off at fuse or circuit breaker box. Check power wires for damage or scrapes. If the power supply wires are within three inches of the LED driver, use a wire suitable for at least 90°C (194°F). **Note:** Most dwellings built before 1985 have supply wire rated to 60°C. Consult a qualified electrician to ensure correct branch circuit conductor before installing.

### Step 3 – Wiring Fixture

- Make all wire connections to appropriate wire. Secure with wire nuts (provided).
- Connect the green wire from the fixture to the supply power source ground wire.
- For NEC (National Electrical Code) requirements, cut the wire about 7" above the canopy (3) and then strip 3/8" from the ends of the color-coded wires accordingly.
- For none-dimming.** Connect the white wire from the fixture to the white (N) wire from supply power source. Connect the black wire from the fixture to the black (L) wire from supply power source. Pink or gray and purple wires are not to be used and must be individually capped to prevent shorting.
- For D1 model with TRIAC dimming.** Connect the white wire from the fixture to the neutral (N) wire from dimming source per dimmer wiring instructions. Connect the black wire from the fixture to the control line (L) wire from dimmer supply power source per dimmer wiring instructions. Pink or gray and purple wires are not to be used and must be individually capped to prevent shorting.
- For D2 model with 0-10V dimming.** Connect the pink or gray wire from the fixture to the dimmer source pink or gray wire. Connect purple wire from the fixture to the dimmer source purple wire. Connect the white wire from the fixture to white (N) wire from supply power source. Connect black fixture lead to black (L) wire from dimmer supply power source.



EGRF16  
(NOT INCLUDED)

FIG 1

# LED Indoor Luminaires

## Ceiling Mount – Pendants

### 120-277VAC / 60Hz

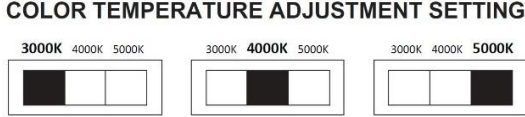
- G. **Do not mix wires.** Pull on each wire lead to make sure connections are secure. Make certain no bare wires are exposed outside of wire connectors. Tuck all connections neatly into junction box.

#### Step 4 – Mounting Fixture (Fig 1 & 2)

- A. Install the fixture by placing canopy (3) over the swivel (5) then turning clockwise into the mounting bracket (1) to secure it.  
 B. Raise the canopy (3) up to the ceiling while turning the retainer coupler (4) clockwise to secure it.

#### Step 5 – Color Changing Temperature Adjustment, CCT (if desired).

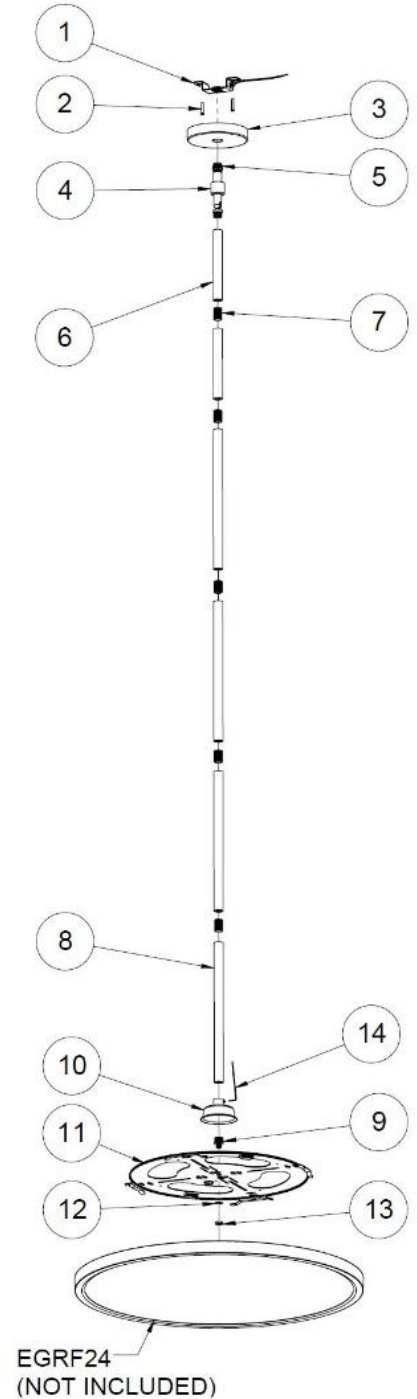
- A. Adjust the CCT switch on the back of the fixture accordingly to the desired color temperature as seen below. **Note:** Fixture is preset to 3000K from factory.



#### Step 6 – Power can now be restored to the fixture

View shown for reference only. Individual models may vary.

Your fixtures may look different from the illustrations shown.



#### Limited Factory Warranty

We hereby warrant that this fixture is free from defects in materials and workmanship when installed and used under normal operating conditions for a period of 5 years from date of purchase. This warranty covers all component parts and extends only to replacement of defective fixture or components; it does not cover failure due to improper installation, misuse, mishandling or damage incurred in transit.