

Heavy Steel Hidden Bracket Installation Directions

NOTE: Bracket must be screwed to wood studs. No anchors!

TOOL LIST

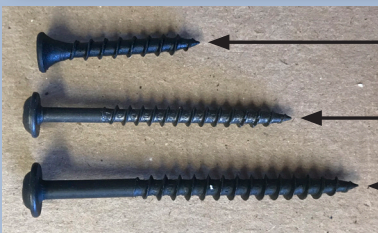
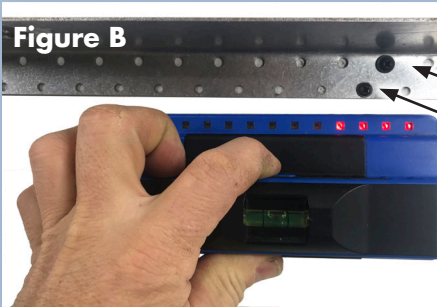
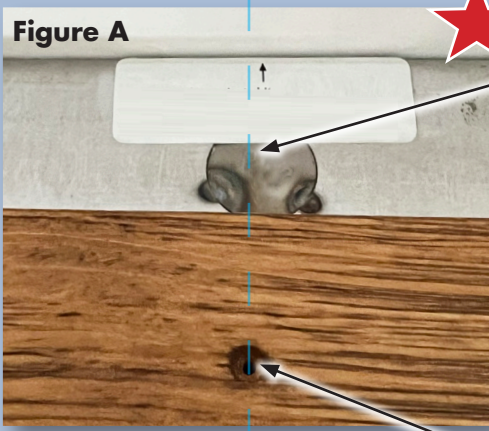
- Drill/Drill Driver
- #2 Square Bit
- Pencil and Level
- Stud Finder

PLEASE read directions thoroughly before installing

- 1
- Mark a small spot on the wall where you want the center of the shelf to be. (Figure A)
- Find and mark the studs in the wall. Install the bracket to the studs using the 2 ½" pan head screws in the top row for shelves that are 10" or 12" deep. The 2" pan head screws go in the bottom row, one screw per stud (smaller holes). For 6", 7" and 8" deep shelves use 2" screws in both rows. Do not over tighten or the bracket will indent into the wall. (Figure B)
- 2
- Slide the shelf onto the bracket. (Figures A & C) The circles on the top of the bracket are **thinner metal and must line up with the pre-drilled holes in the top of the shelf. Otherwise you won't be able to drill through.**
- 3
- Push the shelf tight to the wall **with the pre-drilled holes on top of shelf.** Install the 1¼" taper head screws into the pre-drilled holes. Screws should be flush with the top, no deeper. (Figure D)

- ☐ 18" 1 set of screws toward the center of bracket into stud, one anchor on each side.
- ☐ 24"-30" 2 sets of screws into studs — or 1 in center with an anchor on each side
- ☐ 36"-54" 2-3 sets of screws into studs
- ☐ 60" 3 sets of screws into studs
- ☐ 72" 4 sets of screws into studs

Recommended Weight Capacity	18"-30" shelf.....	30#
	24"-30" shelf.....	30#
	36"-54" shelf.....	45#
	60"-72" shelf.....	50#



IMPORTANT – The small hole/holes in the top of the shelf, **HAVE TO** line up with the quarter size disc in the top of the bracket.

The metal in the quarter size spot is thinner so the screws can go through w/o pre-drilling. If the bracket is stuck in the slot prior to installation use a screwdriver to remove. Make sure the screw is removed first.

Hole in shelf, install 1 ¼" taper head screw flush. Screws go in from the top.



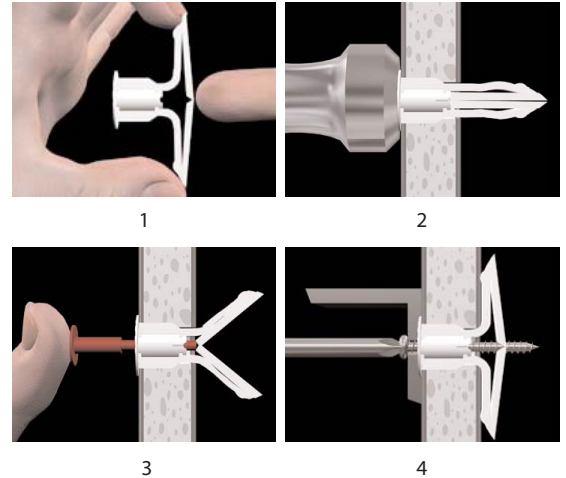
Plastic Toggle Anchors

Installation Information

Instructions

1. Drill a 5/16" diameter hole. Fold anchor in middle.
Note: Use a 3/8" drill in very hard materials.
2. Insert anchor in hole and tap flush. Only 3/4" clearance needed behind wall. Only 1/2" clearance for the TA anchor.
3. Insert key to pop anchor open behind hollow wall or ceiling (not necessary for thick or solid walls). **Do not** hammer key. Remove key.
4. Place item over anchor. Insert screw and tighten until flush with item—then stop. **Do not** overtighten.

Note: Only the threaded portion of the screw (TL) should be in the anchor itself; any unthreaded shank portion of the screw (S) may be in the fixture or item being anchored, but **not** in the anchor.



Installation Data

Size Selection Chart

	Fully Toggled	Wedge	Expansion Anchor	Screw Size Range	Drill Bit Diameter*
Wall Anchor 					
TB® 	T = 3/8"-1/2"	T > 1/2"	X = 1-1/4"	D = #6-#14 TL = 1-1/4" L = 1-1/4" + S	Ø = 5/16"