

GUMBALL MACHINE

Operating and Assembly Instructions

To Fill the Machine

Simply unscrew the screw plug and remove the cap. Pour the gumballs into the glass globe and rescrew the screw plug.

To Remove Glass

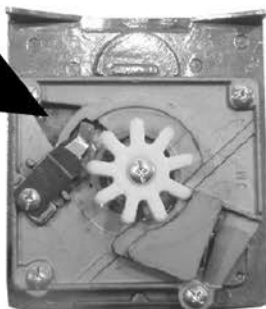
Remove screw plug, cap and Spider Globe and carefully remove Glass Globe. To replace use the reverse procedure.

Caution: Finger tighten the Nut and Screw Plug to avoid undue pressure on the Glass Globe

Coin Free Operation

You can modify your Gumball Machine so that you don't need coins for operation. You will need to carefully remove the Screw Plug, Cap, Nut, Spider Globe, Glass Globe, Gasket, Brush Plate & Adjustable Wheel. When these components are removed firmly grasp the Coin Mechanism and lift outward & upwards.

Remove this metal piece from the coin mechanism for coin free operation.



SCREW
PLUG



CAP



NUT



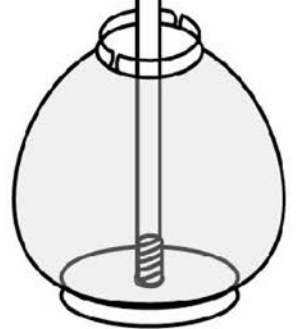
SPIDER
GLOBE



THREADED
ROD



GLASS
GLOBE



GASKET



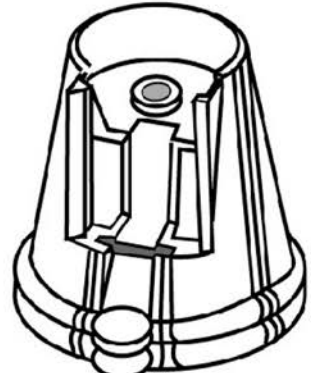
BRUSH
PLATE



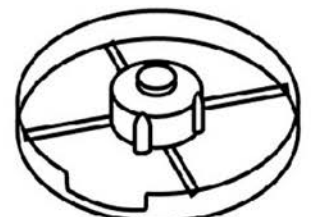
ADJUSTABLE
WHEEL



BODY



BOTTOM
PLATE



MADE IN CHINA