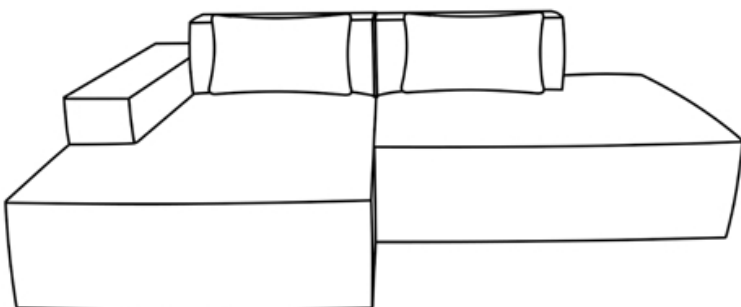
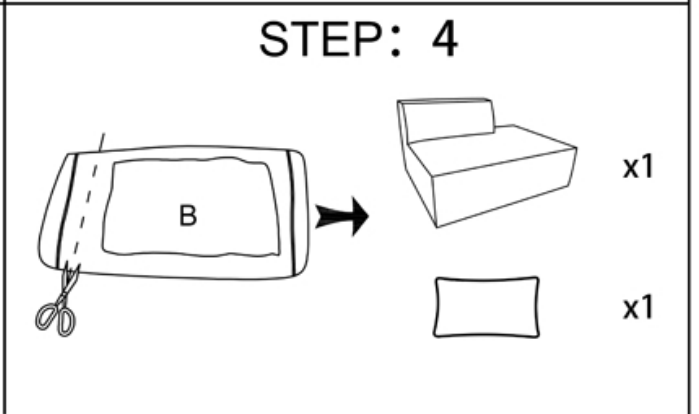
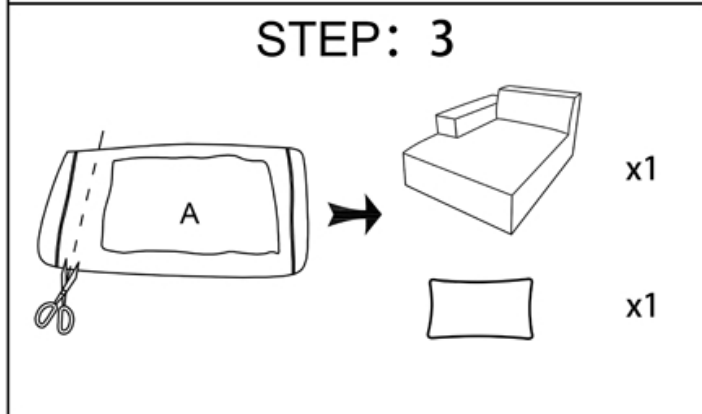
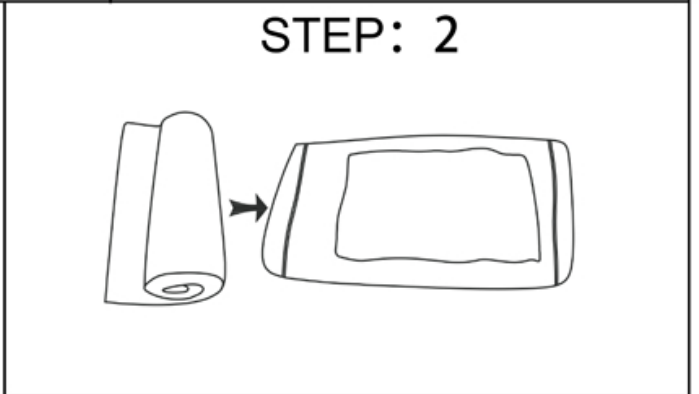
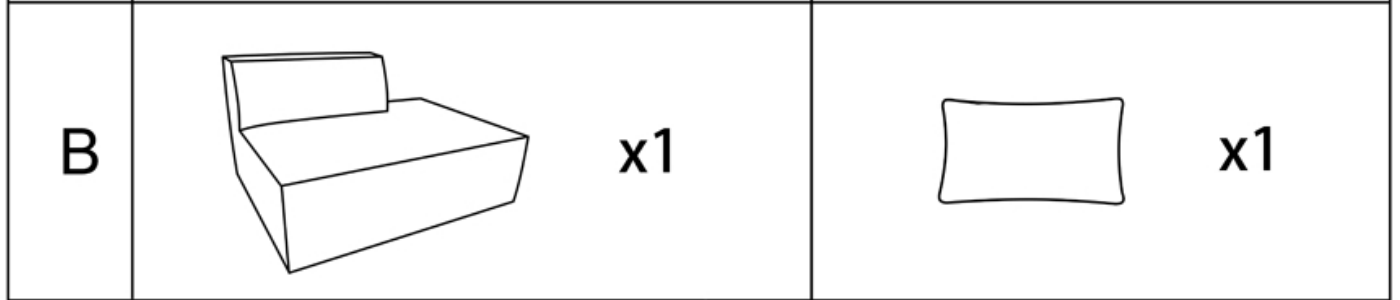
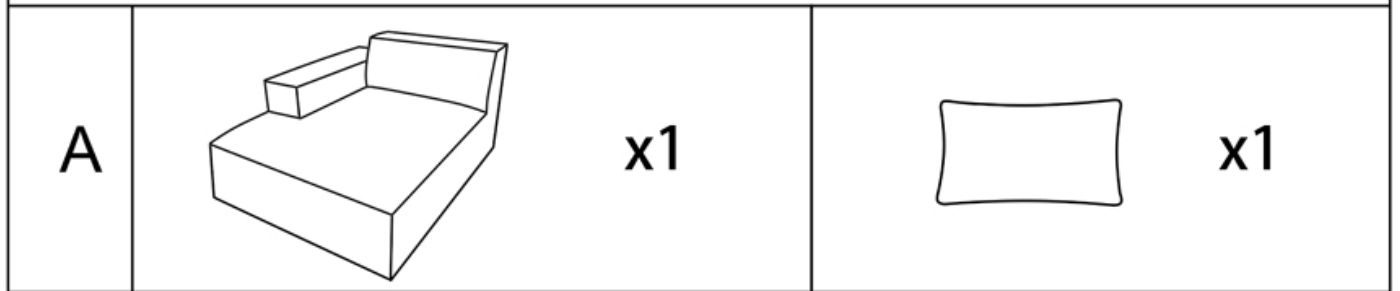


# Assembly Instruction



The sofa cushions need 72 hours to decompress and fully inflate before using them.

# SAFETY INFORMATION OR WARNING

Kompressionssofa / Compressed Sofa / Canapé compressé / Divano compresso / Sofá comprimido

## [DE]

Warnhinweis

- Lesen Sie die vollständigen Montageanweisungen vor Beginn.
- Überprüfen Sie regelmäßig alle Befestigungen.
- Nicht in der Nähe von Feuer oder heißen Oberflächen platzieren.
- Kinder nicht klettern lassen – montieren außerhalb ihrer Reichweite.
- Achten Sie auf plötzliche Expansion bei der Entpackung.

## [EN]

Warning

- Read all assembly instructions before starting.
- Regularly check all fixings. • Do not place near heat sources or open flames.
- Keep children from climbing – assemble out of their reach.
- Beware of sudden expansion when unpacking.

## [FR]

Avertissement

- Lisez les instructions avant l'assemblage.
- Contrôlez régulièrement les fixations.
- Ne placez pas près de sources de chaleur ou de flammes.
- Empêchez les enfants de grimper – assemblez hors de leur portée.
- Attention à l'expansion soudaine lors du déballage.

## [IT]

Attenzione

- Leggere le istruzioni prima del montaggio.
- Controllare regolarmente le fissaggi.
- Non posizionare vicino a fonti di calore o fiamme.
- Non permettere ai bambini di arrampicarsi – montare lontano dalla loro portata.
- Attenzione all'espansione improvvisa durante lo sballaggio.

## [ES]

Advertencia

- Lea las instrucciones antes de armar.
- Verifique periódicamente las sujeciones.
- No coloque cerca de fuentes de calor o llamas.
- No deje que los niños se suban – monte fuera de su alcance.
- Tenga cuidado con la expansión repentina al desembalar.