

ELLINGTON™

Installation Guide

For models:

SA130AB

SA130ABZ

SA130AN

SA130BB

SA130BC

SA130BN

SA130BP

SA130CS

SA130MBK

SA130MG

SA130NCS

SA130SDS

SA130VP

SA130WW

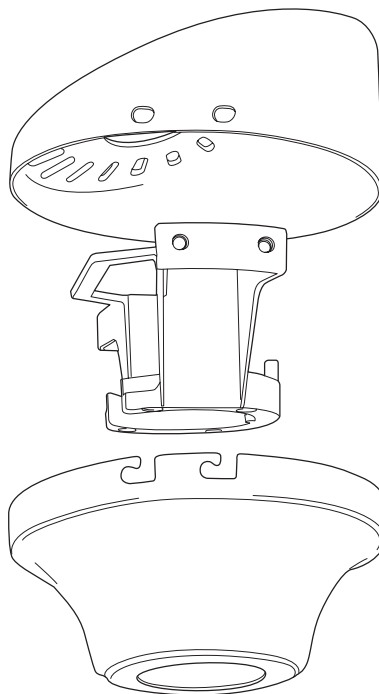


Table of Contents:

Safety Tips. pg. 1

Parts Inventory. pg. 2

Installation Preparation. pg. 2

Slope Adapter Installation. pg. 3

Wiring. pg. 4

Canopy Assembly. pg. 4



SAFETY TIPS.

WARNING: To reduce the risk of electrical shock, turn off the electricity to the fan at the main fuse box or circuit panel before you begin the slope adapter installation.

1. Read all instructions and safety information carefully before installing your slope adapter and save these instructions.
2. Make sure all electrical connections comply with Local Codes or Ordinances and the National Electrical Code. If you are unfamiliar with electrical wiring, please use a qualified electrician.
3. Make sure you have a location selected for your fan that allows clear space for the blades to rotate, and at least seven (7) feet (2.13 meters) of clearance between the floor and the fan blade tips. The fan should be mounted at least thirty (30) inches (76 centimeters) from walls or other upright structures.
4. The outlet box must be securely mounted to the ceiling support joist and they must be capable of supporting at least 35 pounds (16 kilograms). The box must be supported directly by the building structure. Use only UL listed outlet boxes marked "FOR FAN SUPPORT."

WARNING: To reduce the risk of fire, electrical shock, or personal injury, mount to the outlet box marked "Acceptable for Fan Support," and use the mounting screws provided with the outlet box. Most outlet boxes commonly used for the support of lighting fixtures are not acceptable for fan support and may need to be replaced. Consult a qualified electrician if in doubt.

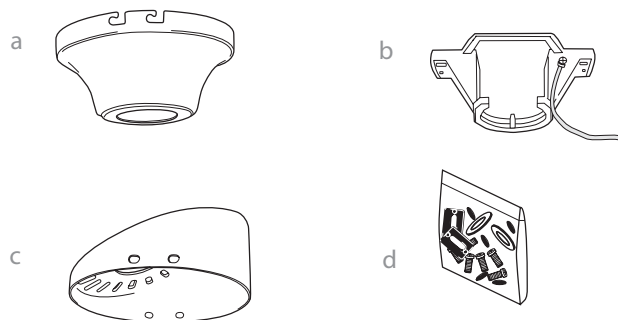
WARNING: To reduce the risk of fire, electrical shock, or personal injury, wire nuts/wire connectors provided with this fan are designed to accept only one 12 gauge house wire and two lead wires from the fan. If your house wire is larger than 12 gauge or there is more than one house wire to connect to the two fan lead wires, consult an electrician for the proper size wire nuts/wire connectors to use.

5. Electrical diagrams are for reference only.
6. After installation is complete, check that all connections are absolutely secure.
7. After making electrical connections, spliced conductors should be turned upward and pushed carefully up into the outlet box. The wires should be spread apart with the grounded conductor and the equipment-grounding conductor on opposite sides of the outlet box.

1. Parts Inventory.

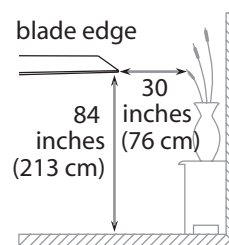
Check against parts inventory that all parts have been included.

- a. canopy. 1 piece
- b. hanging bracket. 1 piece
- c. slope adapter. 1 piece
- d. hardware pack



2. Installation Preparation.

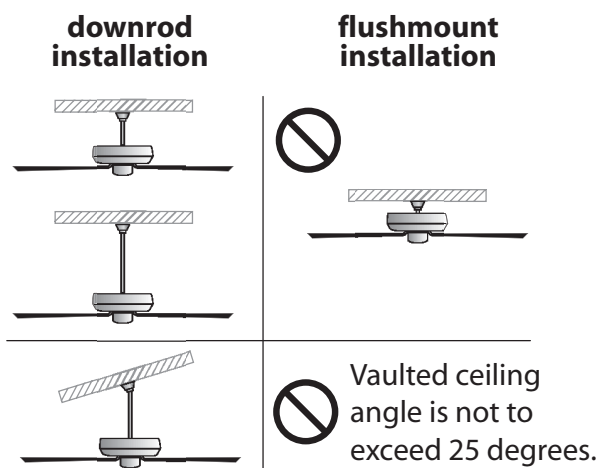
To prevent personal injury and damage ensure that you have allowed the blades a clearance of 84" (213 cm) from the floor and 30" (76 cm) from any wall or obstruction.



This slope adapter is made to be used with a ceiling fan that is installed with a **downrod** on a angled (or vaulted) ceiling. The slope adapter **CANNOT** be used with **flushmount** installation.

Installation requires these tools:

Phillips screwdriver, flathead screwdriver, adjustable pliers or wrench, stepladder, wire cutters, and rated electrical tape.



3. Slope Adapter Installation.

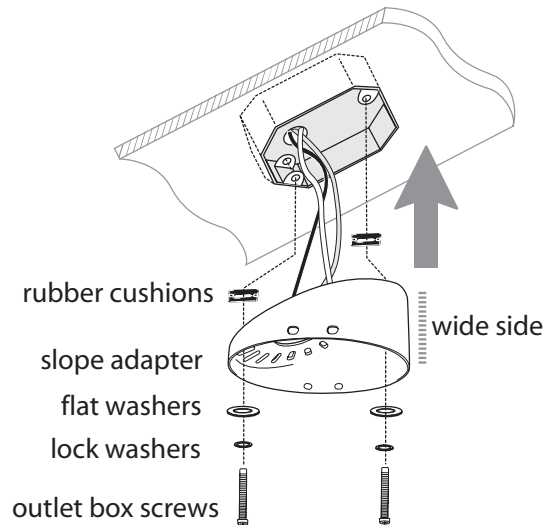
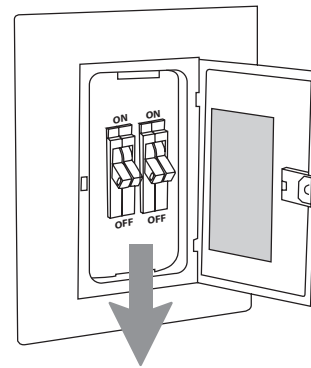
Turn off circuit breakers to current fixture from breaker panel and be sure operating light switch is turned to the off position.

WARNING: Failure to disconnect power supply prior to installation may result in serious injury.

Remove existing fixture.

WARNING: When using an existing outlet box be sure the box is securely attached to the building structure and can support the full weight of the fan. Ensure it is clearly marked "Suitable for Fan Support." If not, it must be replaced with an approved outlet box. Failure to do so can result in serious injury.

Peel back plastic on adhesive rubber cushions and affix to outlet box (this will reduce vibration). Gently feed electrical wiring through center hole of slope adapter. Install slope adapter to outlet box* using lock washers and flat washers provided in hardware pack and original screws from the outlet box. *Face wider edge of slope adapter towards high point of ceiling, with the open side facing the floor.

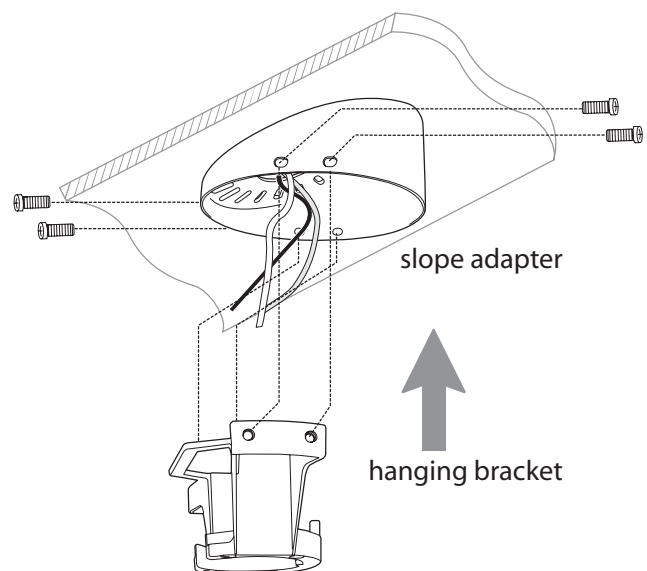


4. Hanging Bracket Installation.

WARNING: It is imperative that you use the hanging bracket provided with this slope adapter as the side screw holes in the slope adapter are aligned to fit with the side screw holes in the hanging bracket provided. (Keep the hanging bracket that came with your fan should your needs change in the future.)

Align holes in hanging bracket with holes on side of slope adapter and insert 4 screws provided in hardware pack. Insert these screws 3/4's* of the way as this will allow the hanging bracket to support the weight of the fan until you are ready to do the wiring.

***WARNING:** Failure to insert screws 3/4's of the way may result in serious injury.



5. Wiring.

*BEFORE WIRING, FOLLOW INSTRUCTIONS IN YOUR FAN MANUAL FOR FAN ASSEMBLY (WHEN IT CALLS FOR THE CANOPY, **USE CANOPY PROVIDED WITH THIS SLOPE ADAPTER** AS THIS IS THE ONE HAVING THE HOLES PROPERLY ALIGNED FOR THE SLOPE ADAPTER).

IMPORTANT: Be sure outlet box is properly grounded or that a ground (**GREEN** or Bare) wire is present.

Make sure all electrical connections comply with Local Codes or Ordinances and the National Electrical Code. If you are unfamiliar with electrical wiring, please use a qualified electrician.

Note: Excess lead wire length from the fan can be cut and stripped to the desired length.

When downrod is secured in place on the hanging bracket, electrical wiring can be made (*diagram 1*) as follows:

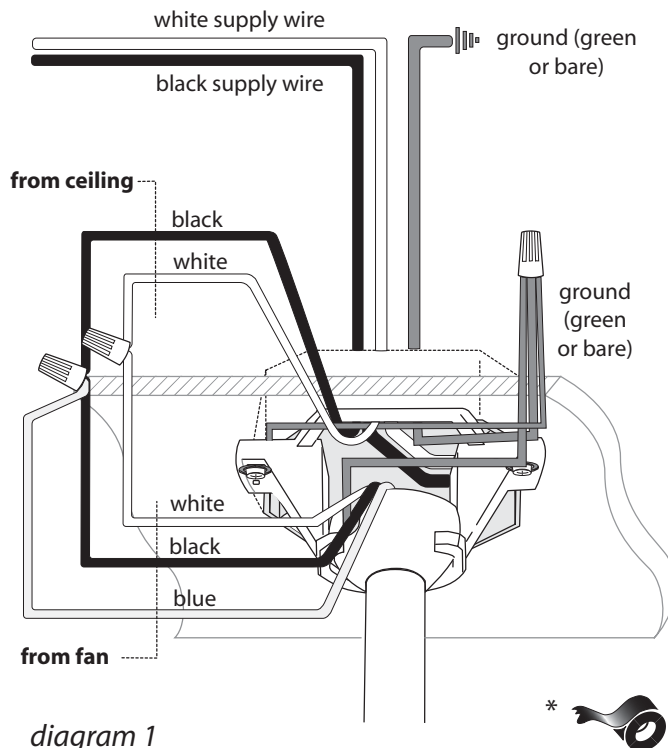
Connect **BLACK** and ¹**BLUE** wire from fan to **BLACK** wire from ceiling with wire nut.

Connect **WHITE** wire from fan to **WHITE** wire from ceiling with wire nut.

Connect all **GROUND (GREEN)** wires together from fan to **BARE/GREEN** wire from ceiling with wire nut.

¹ If you intend to control the fan light with a separate light switch, connect **BLUE** wire from fan to the **BLACK** supply from the independent switch.

* Wrap all wire nuts with electrical tape as an extra safety measure.



6. Canopy Assembly.

Raise canopy to the hanging bracket and line key slot holes up with partially inserted screws. Twist to lock and tighten all screws with Phillips screwdriver.

CONTINUE TO YOUR FAN MANUAL'S INSTRUCTIONS TO COMPLETE YOUR FAN INSTALLATION.

