

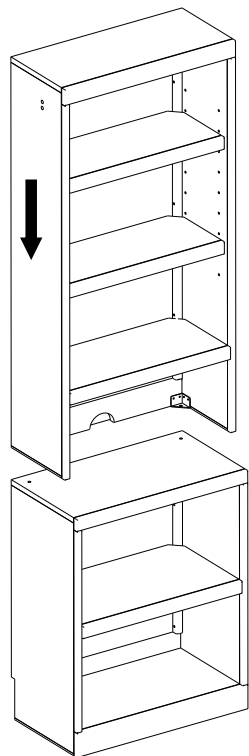
**Set-up Instructions for
Cabinets and Option-Desk**

Thank you so much for your purchase!!!

We want to provide you with the best and fastest service possible,
so if you need a replacement for a damaged or missing part, or if
you have a question...

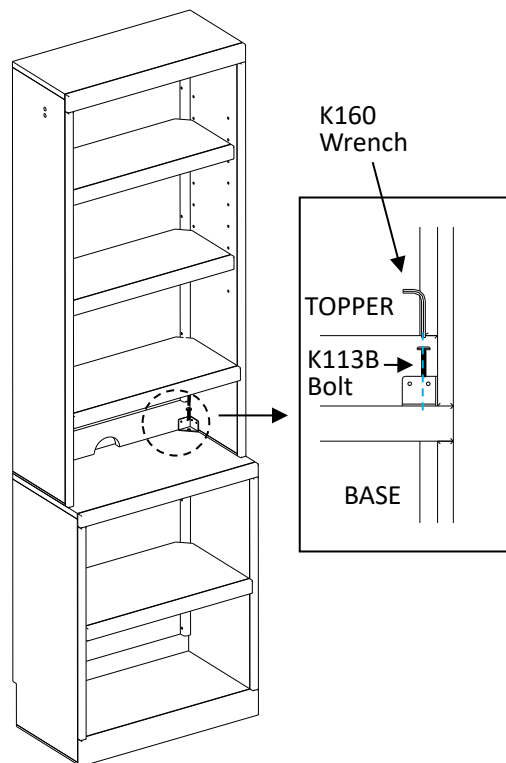
Please Call Us

Connecting the Pier Topper to the Bookcase Base, and the assembled pier to the Bed Case.



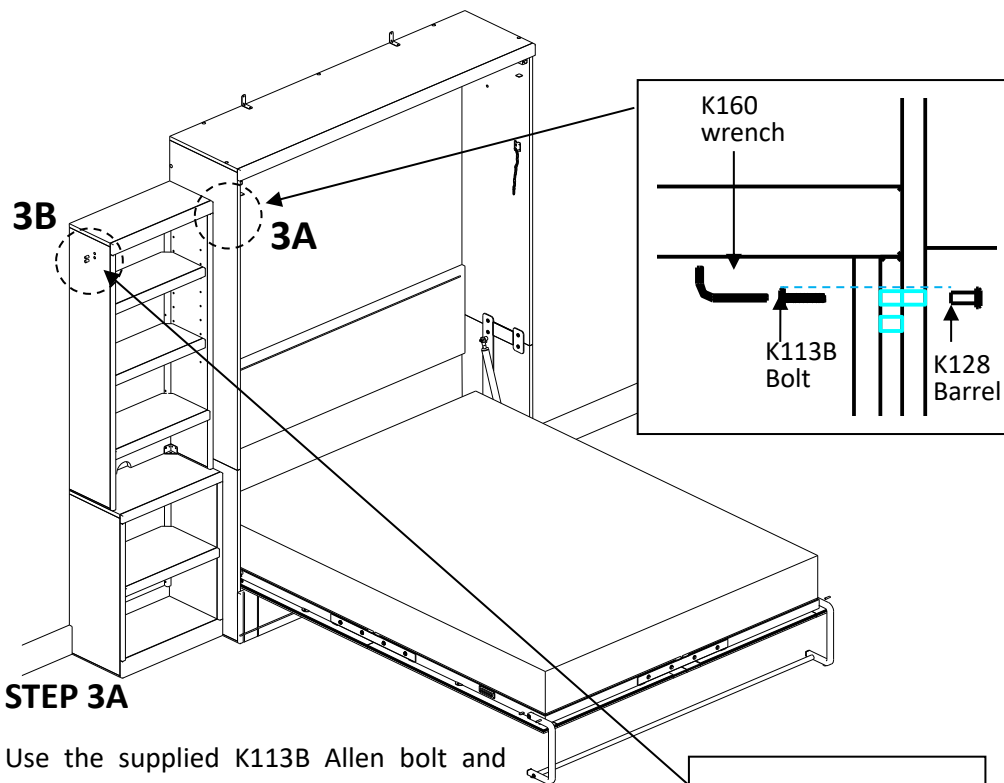
STEP 1

Carefully place the pier topper onto the Bookcase Base, flush on the sides and back.



STEP 2

Use the supplied K113B Allen bolt to connect through the topper bracket and desk top, securing tightly.

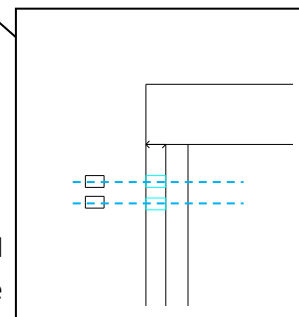


STEP 3A

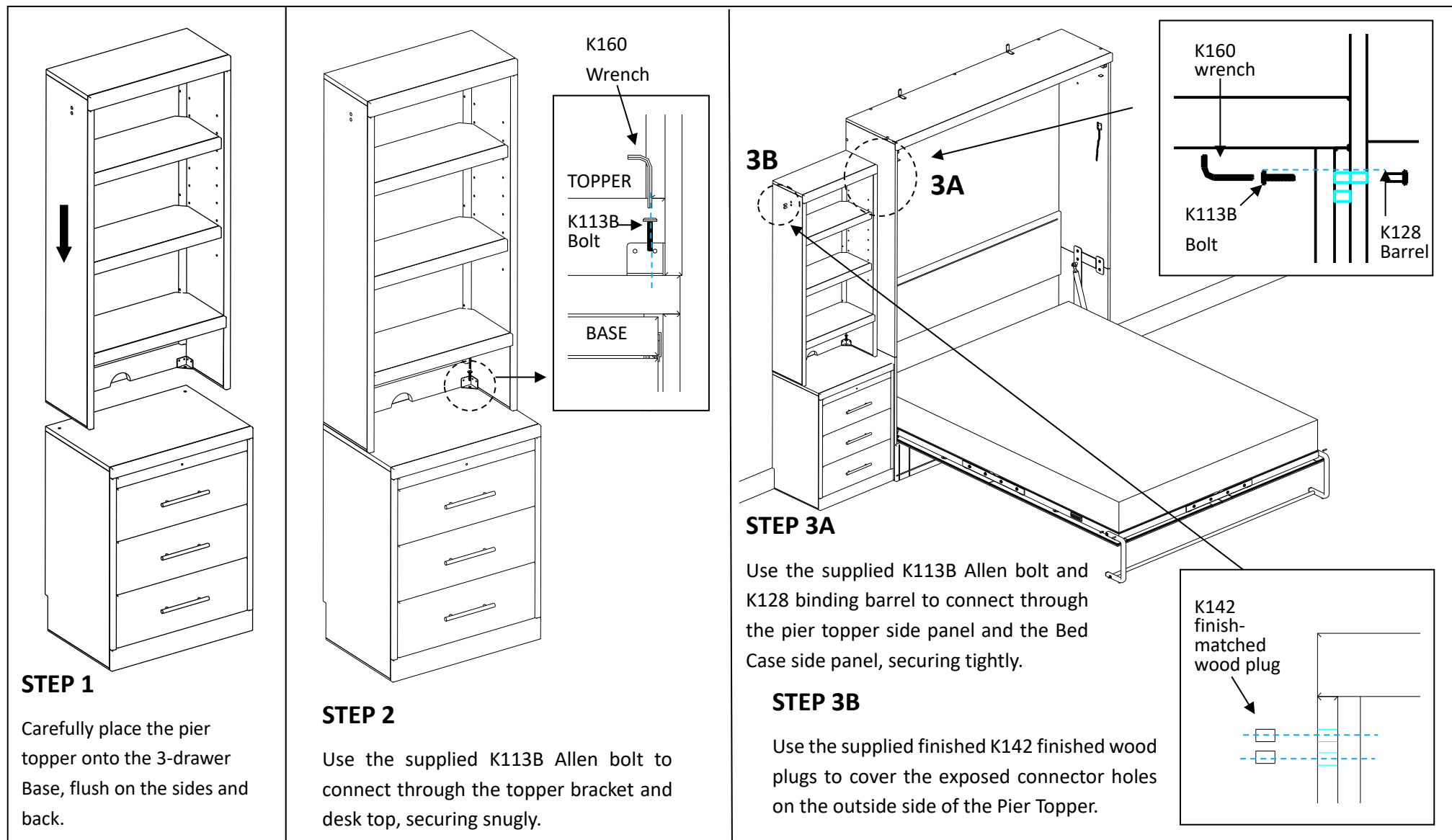
Use the supplied K113B Allen bolt and K128 binding barrel to connect through the pier topper side panel and the Bed Case side panel, securing snugly.

STEP 3B

Use the supplied finished K142 dowel plugs to cover the exposed holes on the outside side of the Pier Topper.



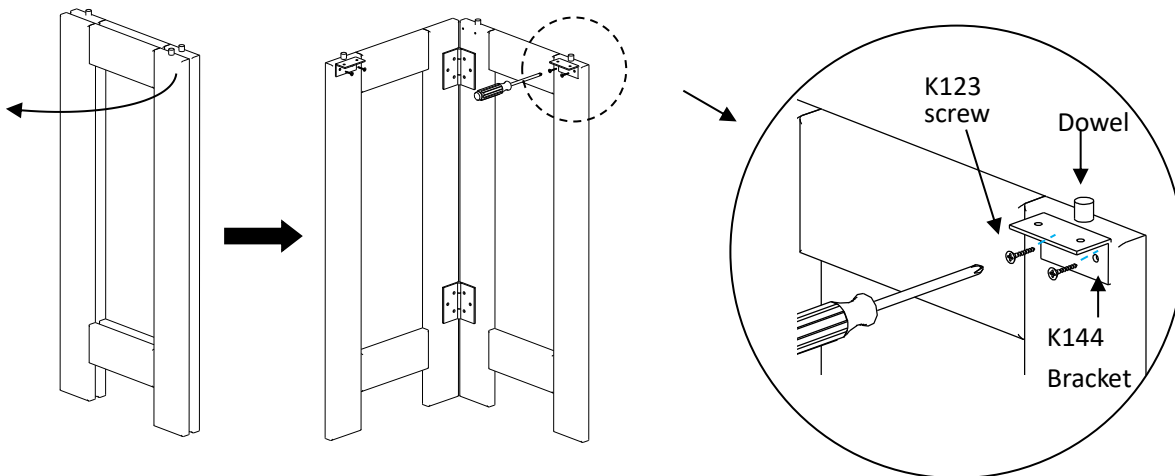
Connecting the Pier Topper to the 3-Drawer Base, and the assembled pier to the Bed Case.



Setting up the Option Desk page 1

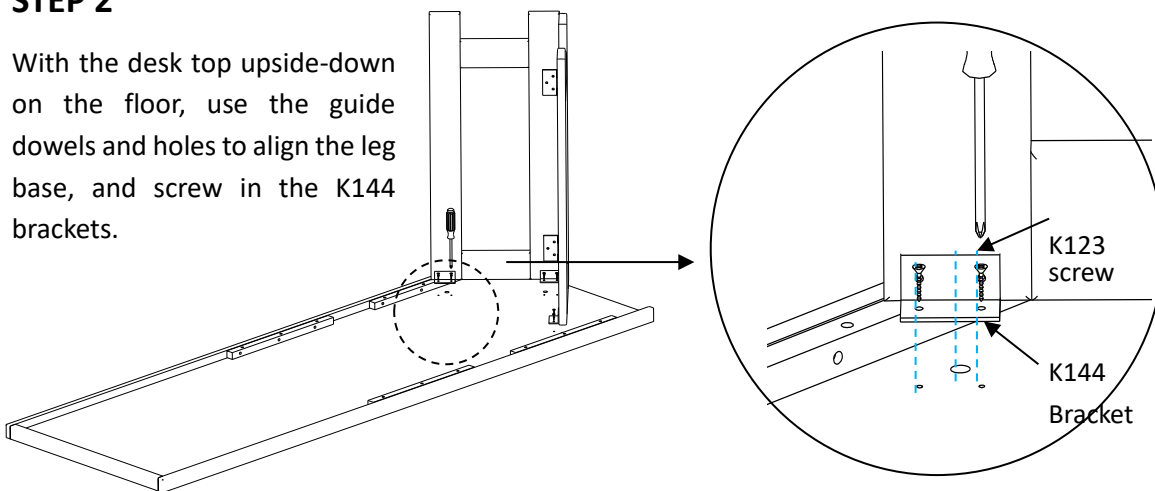
STEP 1

Fold the Leg Base open and install the L-shaped K144 bracket on each leg as shown.

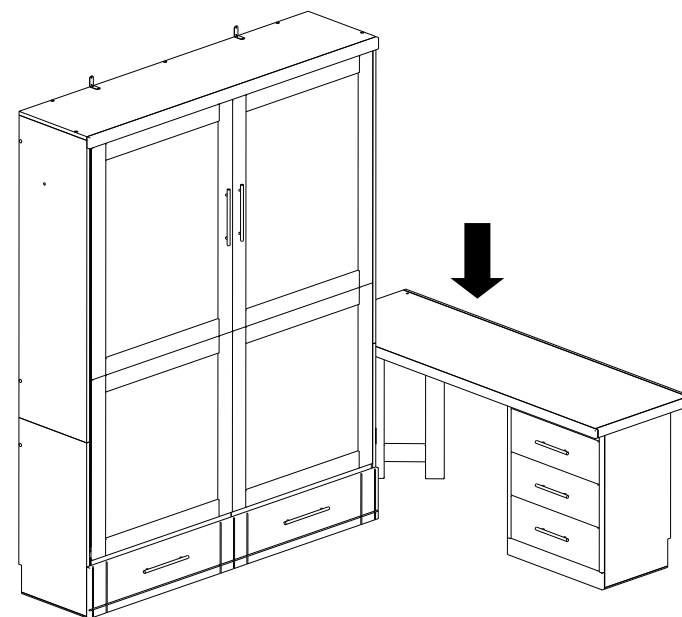


STEP 2

With the desk top upside-down on the floor, use the guide dowels and holes to align the leg base, and screw in the K144 brackets.



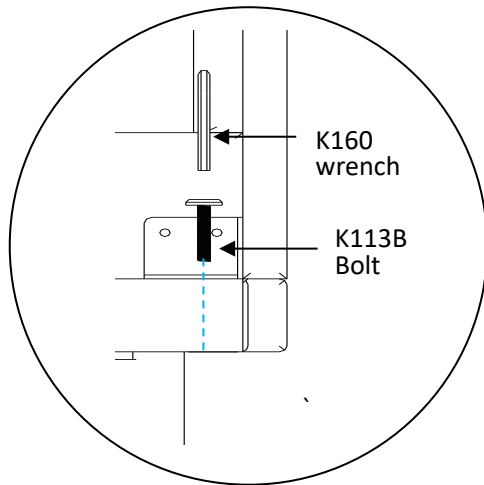
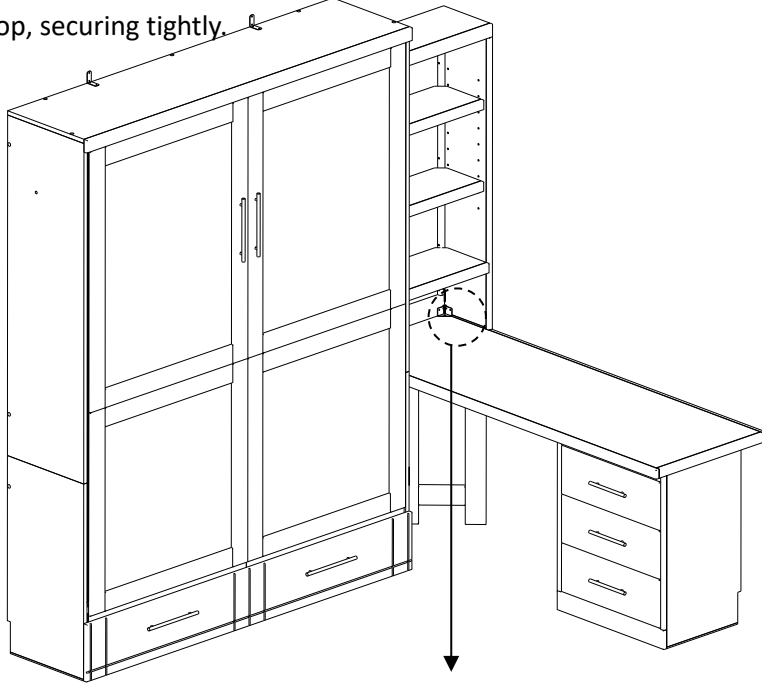
STEP 3 Set the desk top square against the Bed Case and back to the wall, and position the 3-drawer base under the open end of the Desk



Setting up the Option Desk page 2

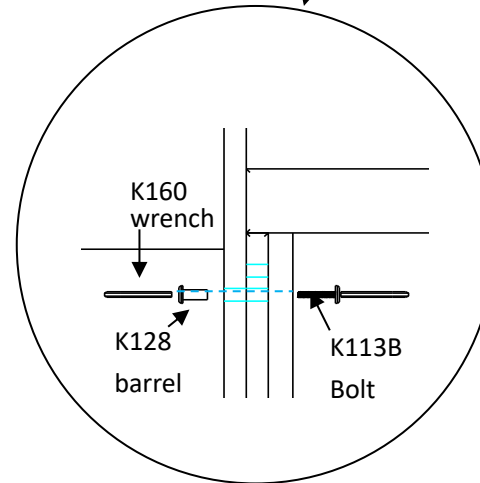
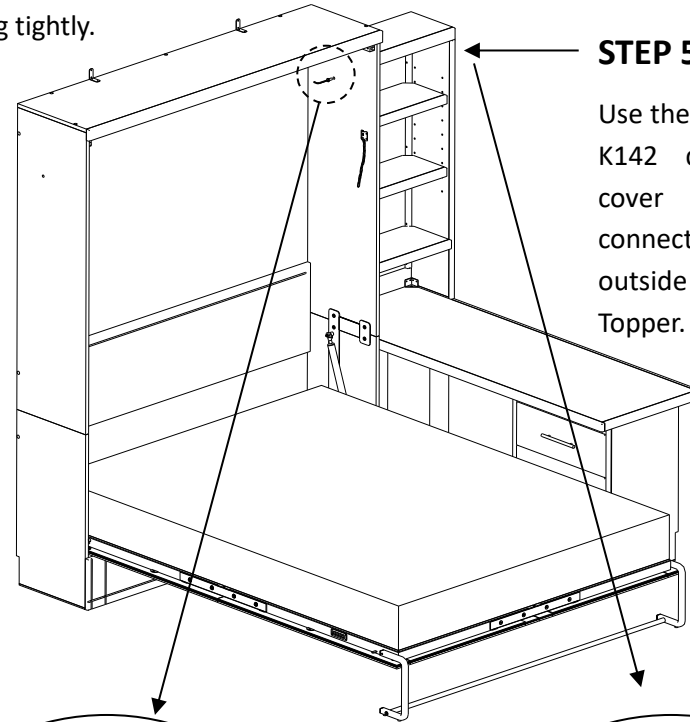
STEP 4

Use the supplied K113B Allen bolt to connect through the topper bracket and desk top, securing tightly.



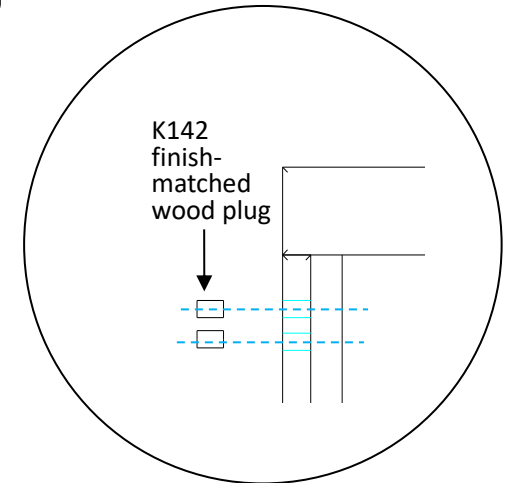
STEP 5A

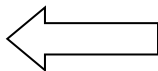
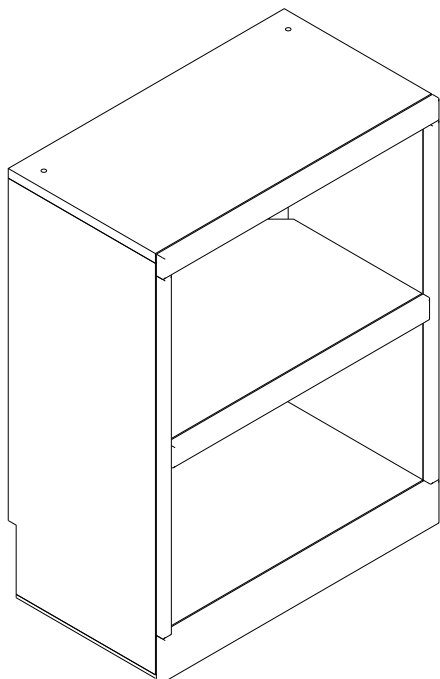
Use the supplied K113B Allen bolt and K128 binding barrel to connect through the pier topper side panel and the Bed Case side panel, securing tightly.



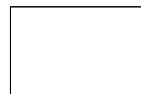
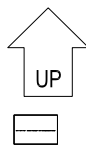
STEP 5B

Use the supplied finished K142 dowel plugs to cover the exposed connector holes on the outside side of the Pier Topper.





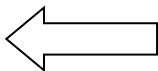
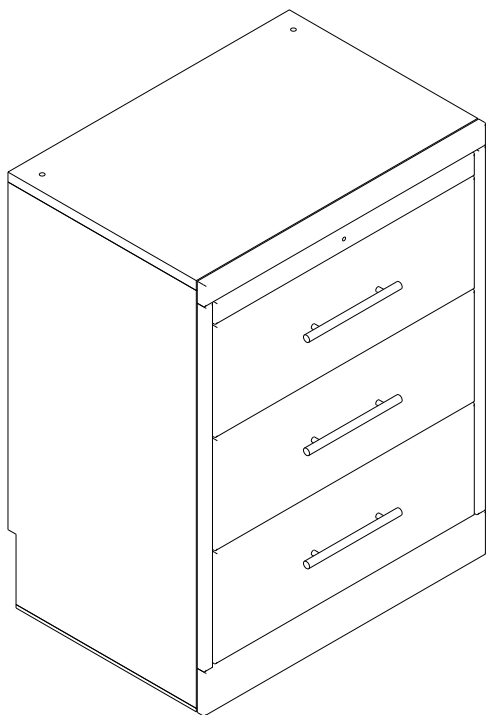
BOOKCASE CASE



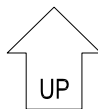
BOOKCASE BASE
C.FT 6.21
CM 0.176
LBS 41
KG 18.6

US PATENT PENDING

NO BUBBLE PACK



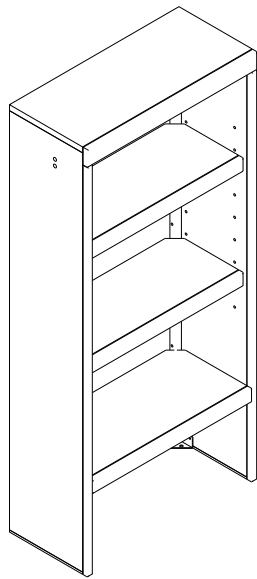
3DRAWERS CASE



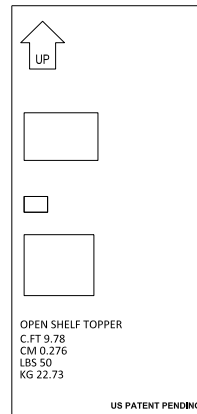
3DWR/ROS DRAWER BASE
C.FT 9.07
CM 0.257
LBS 54
KG 24.5

US PATENT PENDING

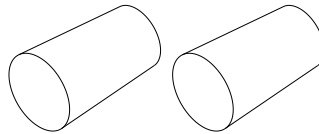
NO BUBBLE PACK



OPEN SHELF TOPPER



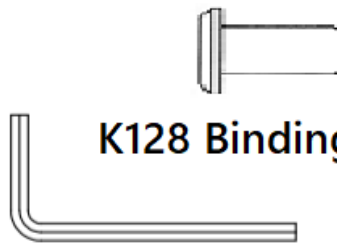
HARDWARE BAG



K142
Plugs

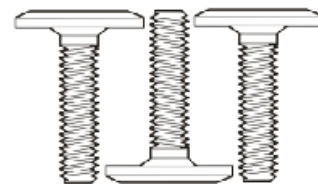
BUBBLE PACK

Bubble Pack



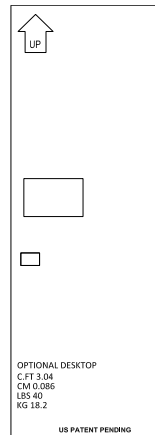
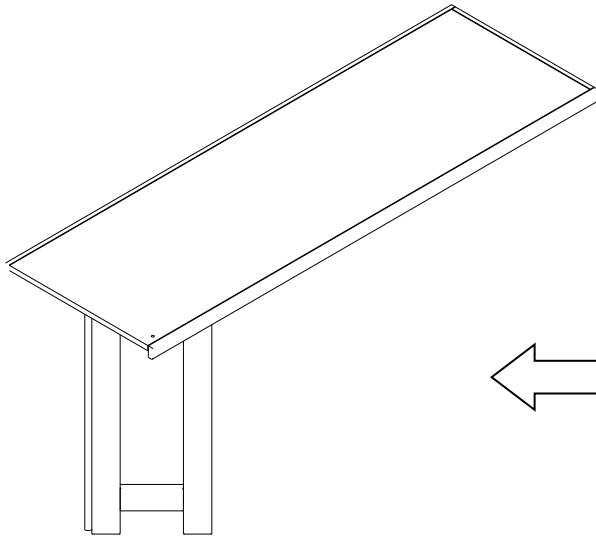
K128 Binding Barrel

K160 - 4mm ALLEN WRENCH



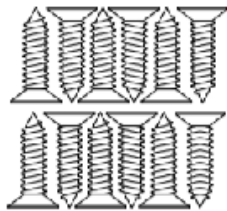
K113B Bolt

OPTION DESK TOP

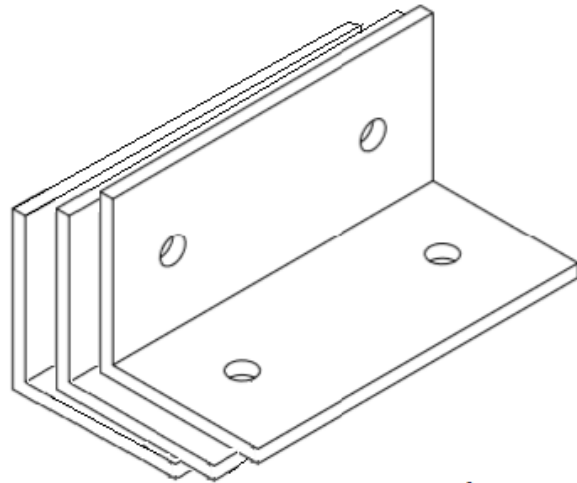


BUBBLE PACK

Bubble Pack



K123 - SCREW #8x5/8"



K144 - Bracket