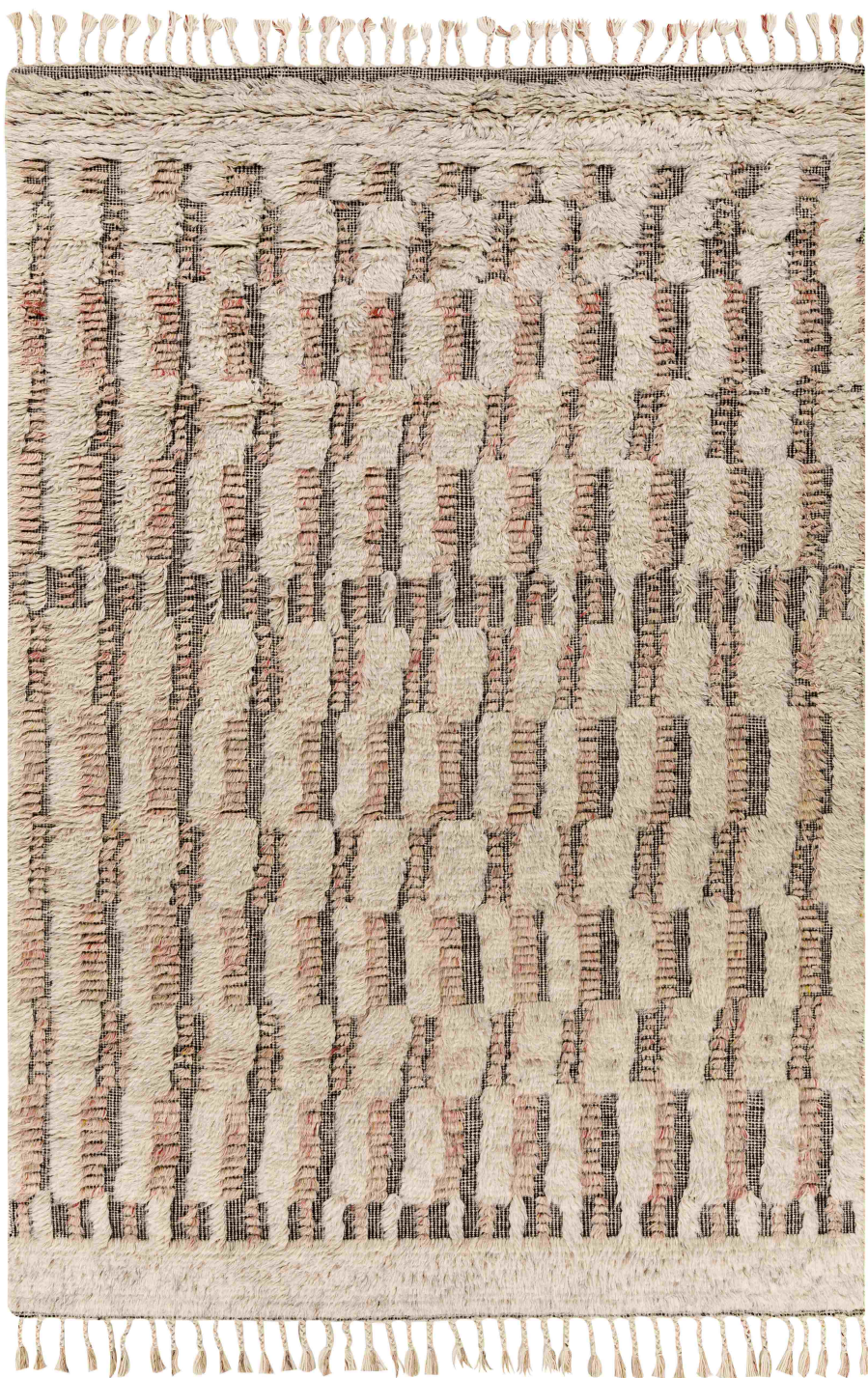
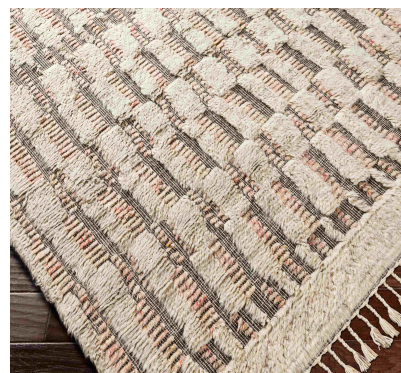


## Sahara SAH-2309



**CORNER DETAIL**



### DETAILS

100% Wool  
Hand Knotted  
High Pile  
Thickness: 1"  
Made in India

### SIZES AVAILABLE

2' x 3'  
4' x 6'  
6' x 9'  
8' x 10'  
8'10" x 12'  
18" Sample  
Custom Sizes Available