



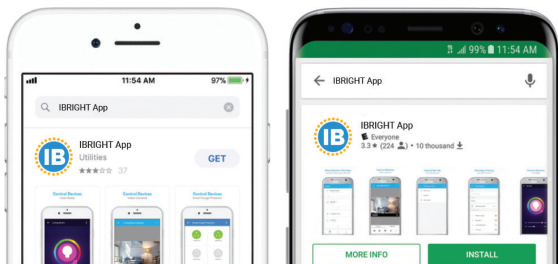
IBRIGHT App

User Guide



062020

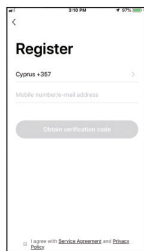
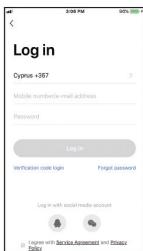
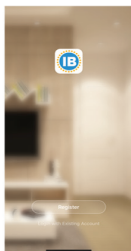
STEP 1: Download the IBRIGHT App from App Store or Google Play.



STEP 2: Login/Registration

After downloading the free IBRIGHT App from Apple Store or Play Store, please create a new account by following these steps:

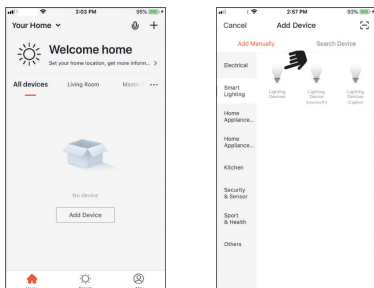
1. Press "Login"
2. Select your country code, enter the mail address you want to use to login and press «Get authentication code»
3. Enter the code you received by mail, set your personal password and press «Completed»
Now you can access the pages for the creation of your Smart Home.



STEP 3: Add New Device

To add your new device, open IBRIGHT App on «My Home» page, press «+» in the upper right corner and then «Lighting Devices».

The Application offers two different procedures to add your new device: EZ and AP mode. Please use the default EZ mode. If it fails, please try again or use AP mode.

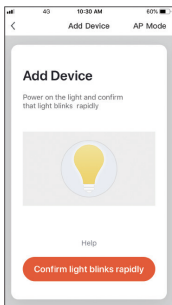


STEP 4: Add New Device – EZ procedure

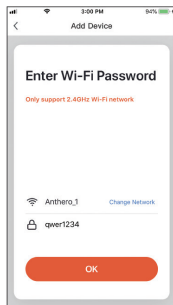
Make sure your new device is in EZ mode, otherwise reset it by switching on the lighting device and, after 10 seconds, switching it off and then switching it on and off continuously until it starts blinking quickly (about 3 times per second).

After resetting the device:

1. Press «Confirm light blinks rapidly» . A Page will open as shown in Pic2.
2. Enter the password of the Wi-Fi network you are connected to and press «OK» to connect your new device (The WiFi network supported is 2.4GHz).



Pic.1



Pic.2

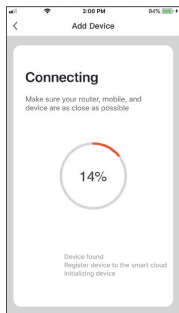
STEP 5: Add New Device – EZ procedure

When connecting the device, you can see the connection status as shown in Picture 3.

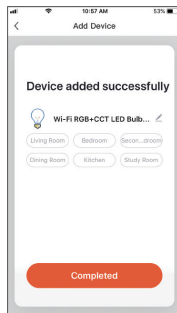
Once connected, a page will open as shown in Picture 4.

Select the room of your home where the device is located and press «Completed» to access the control page of your new device.

Now your new light is ready to be controlled via the App, even remotely.



Pic. 3

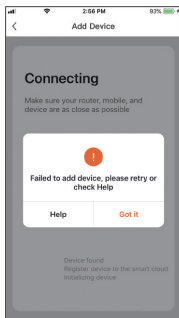


Pic. 4

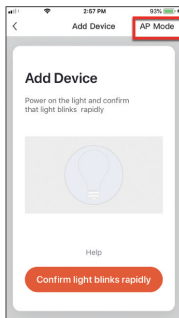
STEP 6: If Connection Failed

If the Application shows the page as in Picture 5, it means that the device connection has failed.

By pressing «Got it», you can try to connect it again in EZ mode or select the AP mode by pressing on the top right as shown in Picture 6.



Pic. 5



Pic. 6

STEP 7: Add New Device – AP procedure

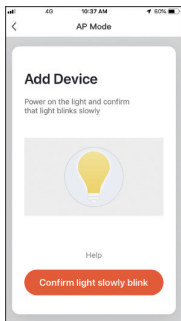
To connect the device in AP mode, switch the light on and, after 10 seconds, switch it off and then switch it on and off continuously until it starts flashing quickly (about 3 times a second).

Continue switching it on and off until it starts to flash slowly (about once every 3 seconds).

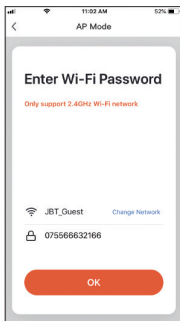
At this point click «Confirm light slowly blink» (Pic.7), enter the password of the WiFi network you are connected to, click «OK» (Pic.8) and you will open the page as shown in Picture 9.

By clicking on «Go connect», your mobile phone will take you to the WiFi settings page.

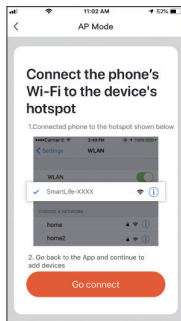
Select the «SmartLife-XXXX» network, go back to the IBRIGHT application and your new device will connect correctly.



Pic.7



Pic.8



Pic.9

STEP 8: Device Control

After connecting the device, automatically it will open the page to control it by the application.

With the keys you find at bottom page, you can:

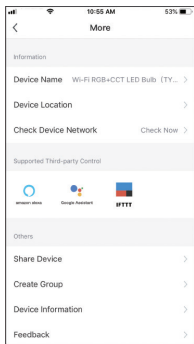
- Change the intensity of the white light
- Change the color of white, from warm white to cold white
- Select the color of your device
- Select one of the scenarios already created for you
- Program the switching on and off at predefined times.



STEP 9: Device Control

By pressing on the menu symbol at the top right, you can:

- Change the name of your new device
- Select the location of the device in your home
- Check how to connect it to your voice control equipment.
- Share control of the device with other family members or friends.
- Create a group of multiple devices so that you can control them all together.
- Update the device firmware
- Remove the device

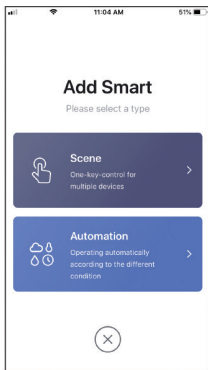
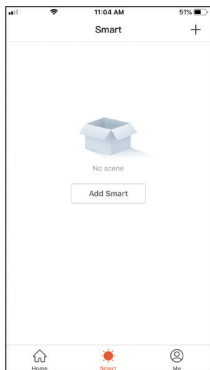


STEP 10: Creation of Scenarios and Automations

You can create an infinite number of Scenarios and Automations making the various devices interact with each other.

By pressing “Smart” at the bottom center of the home page and then “+” in the upper right corner, you can choose whether to add a new scenario or a new automation.

- A Scenario is a set of commands assigned to the various devices that will be activated simultaneously whenever you click on the created scenario or in the days and hours programmed by you.
- An Automation is the execution.



STEP 11: Profile

“Me” is the page where you can change your settings.

1. Your Profile
2. Home Management
3. Message Center
4. Additional services, such as the list of devices that can be associated with the application (Google Home, Amazon Echo) in order to control your home via voice commands.
5. Settings.

STEP 12: Sharing Devices

You can share your devices with your family and friends who has already downloaded IBRIGHT App and registered a new account.

The people you shared your devices with will be able to control them, but they will not be able to add new devices to your home or even delete devices shared.

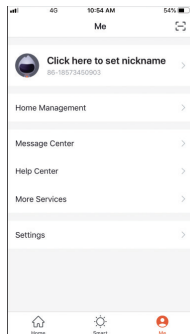
You have two different ways to share your devices:

- A. Enter the page of your profile, press «Home Management» and «Shared devices» to enter the page where you can select the devices you want to share and then enter the mail address with which the user you want to share them with is registered in the IBRIGHT App.

If you want to delete sharing with a user, place your finger on the user's name, scroll to the left and press «Delete».

- B. Enter the menu of the device you want to add, click “Shared Devices” and enter the email address with which the user you want to share them with is registered in the IBRIGHT App.

If you want to delete sharing with a user, place your finger on the user's name, scroll to the left and press «Delete».



STEP 13: Frequent Questions

1) Can I group multiple IBRIGHT's devices together?

Yes, you can group multiple devices of the same type together, by room, location or however else you want. The same devices can be in multiple groups. From your main devices list, press on one of the devices you want to group, press the menu button on the top right and click «Create Group». You will then be able to choose which devices you would like to group together, confirm and name the new group and save.

Now, in the page of the devices' list, you will also find the new group just created. Each command given to the group will be executed simultaneously by all the devices belonging to that group.

2) How many devices can I control?

IBRIGHT App can control an unlimited amount of devices in an unlimited amount of locations. Your router may have a limit of how many devices can be connected to one router.

3) The device appears offline or unreachable, what should I do?

Make sure your WiFi router is online and in range.

Make sure you have the latest IBRIGHT functionality by pressing «Check for firmware update» in your device settings.



www.goibright.com

NOTES:

Pictures shown in this instruction manual could be a bit different from the pages of your App, because Product and Software update periodically