

HIGH GLOSS WHITE



BLACK

GRAY OAK
& HIGH GLOSS GRAY OAK

WALNUT



This 60 Inch model comes with a reinforced Acrylic sink, Marine Veneer Constructed Console that is fully moisture and water proof, with high quality European Bellucci Hardware, that provide smooth soft-closing operation on both doors and drawers. This Vanity features 2 large Drawers

60" High Gloss White Wall Mount Modern Bathroom Vanity

60" Black Wall Mount Modern Bathroom Vanity

60" Walnut Wall Mount Modern Bathroom Vanity

60" Gray Oak Wall Mount Modern Bathroom Vanity

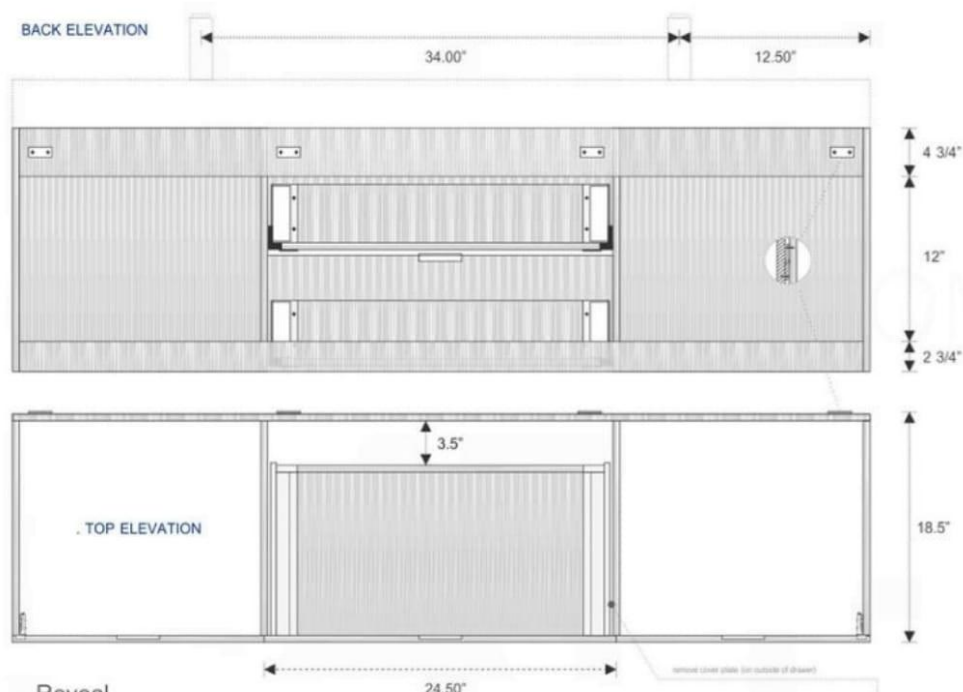
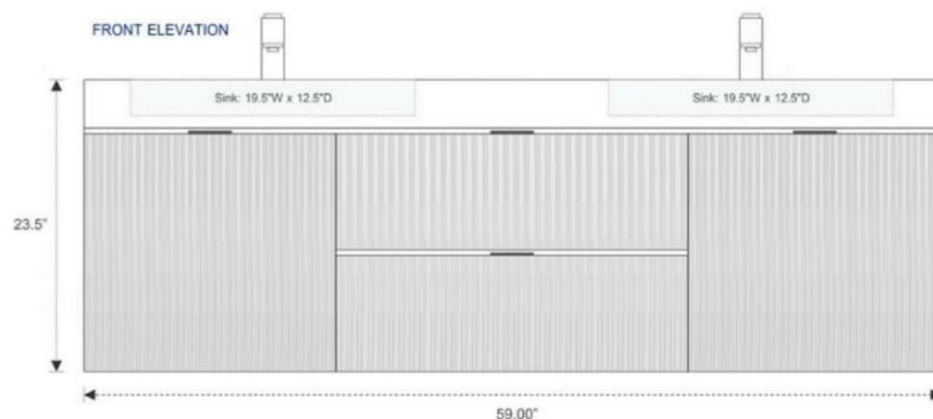
60" High Gloss Gray Oak Wall Mount Modern Bathroom Vanity

Description:

60" Wall Mounted Vanity w/ two Soft Closing Drawers and two Doors

Features:

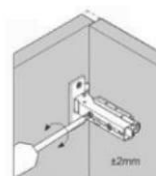
- European Soft Closing Hardware
- White color: 18mm Thick MDO Construction Console
- Other colors: 18mm Marine Veneer Wood construction Console
- Open back, w/ 3.5" clearance behind drawers for easy plumbing access
- Reinforced Acrylic Composite Sink w/ Rectangular, Chrome Overflow



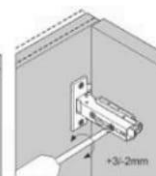
Adjustments

The options for height adjustment depend on the type of base plate. All adjustments can be made independent of one another.

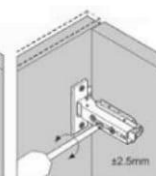
For depth adjustment, select base plates have worm gear adjustment access through the hinge arm.



Side adjustment



Depth adjustment via worm gear



Height adjustment via base plate

Dimensions:	width	depth	height
inches	59.0"	18.5"	23.5"
mm	1500.00	475.00	600.00

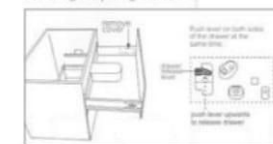
Reveal

The reveal (R) is the distance required between two doors or between the door and side wall of the cabinet to allow sufficient space for opening the door. The required reveal width (R) depends on the thickness of the door. Most cabinet makers prefer a reveal (R) of between 3mm and 6mm.

Full Overlay/Overlay Door



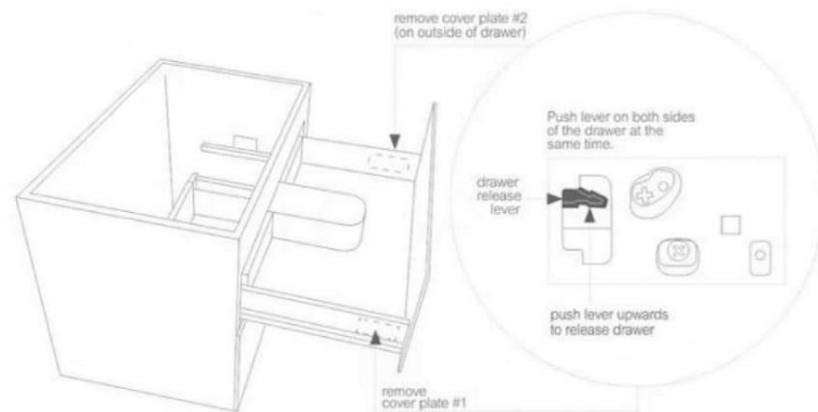
Removing + Adjusting drawers



. Vanity cabinet | removing+adjustment drawers

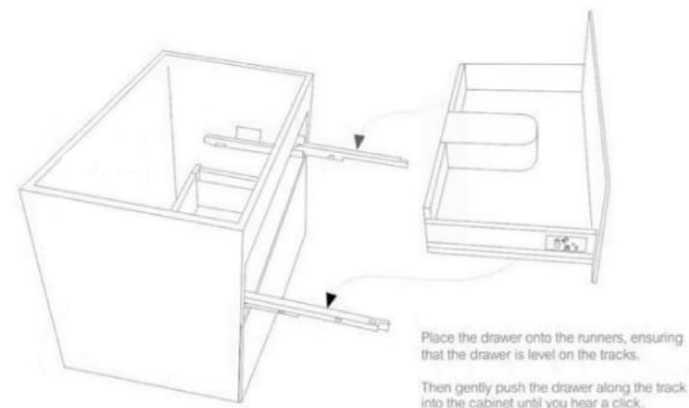
To remove the drawer/s

- * Extend the drawer
- * Each drawer has a **plastic cover plate** on each side of the drawer (#1 and #2)
- * **Remove both cover plates** (#1 and #2) to expose a small **drawer release lever** under each plate: *see detail*
- * To release and remove the drawer, simultaneously **push the drawer release levers upwards** (both sides at same time) and slide/lift the drawer away from the tracks. Repeat for each drawer.



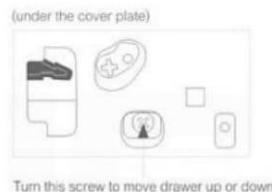
To replace the drawer/s

- * Fully extend the drawer runner on each side of the cabinet.
- * Place the drawer onto the runners, ensuring that the drawer is **level** on the tracks, and continue to hold in place (otherwise the drawer will fall).
- * Keeping the drawer level, gently **push the drawer along the runners into the cabinet until you hear a click**. This indicates that the drawer is properly locked into place on the track.
- * Once the drawer is back in place, replace the cover plates on the sides of the drawer.



To adjust the drawer/s

- * To move the drawer up or down, turn the **bottom screw** located under the cover plate on each side of the drawer.



These instructions show a vanity cabinet which has two drawers. However, the instructions apply to all cabinets and all sizes of the Vanity line. The characteristics and drawer mechanisms are the **same** for all units.