

# SYSTEMS GROUP INC.

*Thank you for choosing eLEDing!*

**It is important that you read this set-up instruction before installing**

**Any questions or issues, please contact us before returning**

**Our goal is 100% customer satisfaction**

**Please post your positive feedback on the web-stores**

**We appreciate your business! Thanks again!**



**EE805W1F & EE810W2F (Refer Page 2 for detail of Installation)**

**INSTANT 10 % DISCOUNT COUPON for any of these High Performance Solar Lights**



**EE818WDC**

Equivalent to 100W+ Halogen Lamp or  
200 pieces traditional LED matrix illuminators  
Dusk to Dawn continuous illumination



**EE860plus**

Equivalent to 60W+ Standard Lamp  
Upgraded dual operating SMART modes  
Dusk to Dawn continuous illumination



**EE814WDC**

Equivalent to 60W+ Halogen Lamp or  
100+ pieces traditional LED matrix illuminators  
Dusk to Dawn continuous illumination



**EE828WDC**

Two adjustable ultra-bright LED illuminators  
provide a brightness level equivalent of up to  
50x50 W+ Halogen lamp  
Dusk to Dawn continuous illumination



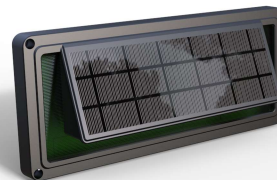
**EE805W-SF(RGB)**

User-friendly installation & setup  
Wide application for wall & ground installation  
6 color combination & 4 color-changing modes  
Dusk to Dawn continuous illumination



**EE805W-SFLH**

User-friendly installation & setup  
Wide application for wall & ground installation  
Two brightness options  
Dusk to Dawn continuous illumination



**EE801W-SL(G)**

Extendable with multiple units  
Ideal security light for stairs, fence, walkway  
Dusk to Dawn continuous illumination  
Color-changing illumination activated by sound



**EE805W56**

User-friendly installation & setup  
Equivalent of up to a 50-Watt standard bulb  
Dusk to Dawn continuous illumination

## eLEDing EE805W1F & EE810W2F Quick Set-up Reference

### Components & Light Installation (Fig 1)

For wall-mounted application, drill three holes A, B and C on desired locations, secure the light body with provided screws (Fig 2).

- For wood surfaces: drill the holes on pre-marked locations and install the mounting bracket.
- For surfaces of concrete, brick or stucco: use a masonry bit (with appropriate size & length) to drill clearance holes.

### Solar Panel Installation

An ideal installation area should be a flat and stable mounting surface that can ensure the maximum exposure to direct sunlight. An average of 4-hour direct sunlight per day is necessary for dusk-to-dawn performance. The light will automatically turn off when it detects low voltage from the battery. This might happens after 3-4 cloudy days. For northern hemisphere installation, a south-facing installation is recommended and vice versa. East/west-facing installations with good sunlight exposure also works.

### Functionality Test & Activation (Fig.3)

If your testing is lunched during daytime, make sure the solar panel is fully covered by a piece of cardboard. Press the red color ON/OFF button to activate the light. If the light doesn't turn on, recharge the battery for 1-2 days on sunny days. To shut down the light, during the time when light turns on, momentary press the ON/OFF button for 1-2 seconds, the light will turn off completely.

### True Dusk to Dawn Illuminating Profile (Fig.3):

During daylight hours, the sun will charge the battery through solar panel. Features with IPM, when the built-in photocell senses the ambient light level is lower than 10 LUX (darkness environment), the light will automatically turn on with maximum brightness for the first 5 hours. After 5 hours, the light will switch to energy-saving mode by dimming down to 25% of maximum brightness for the rest of the night. When dawn comes, the light extinguishes when ambient light level start to increase. This light does not feature with any motion sensing technology.

Fig. 1

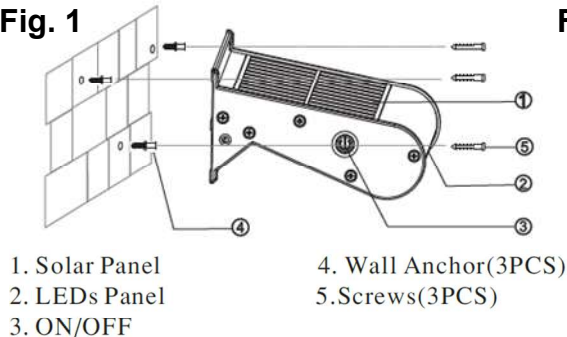


Fig. 2

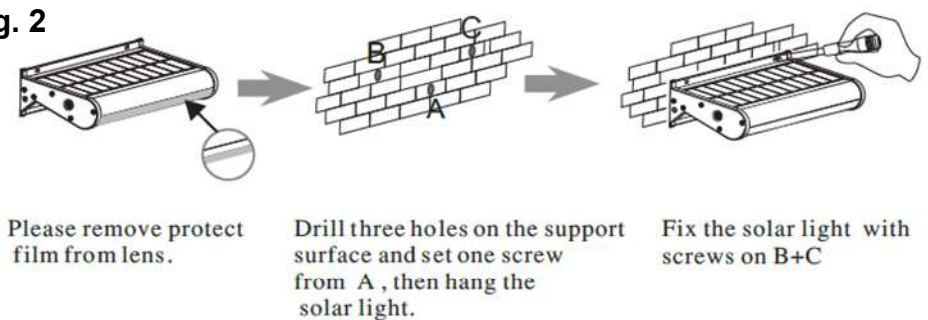
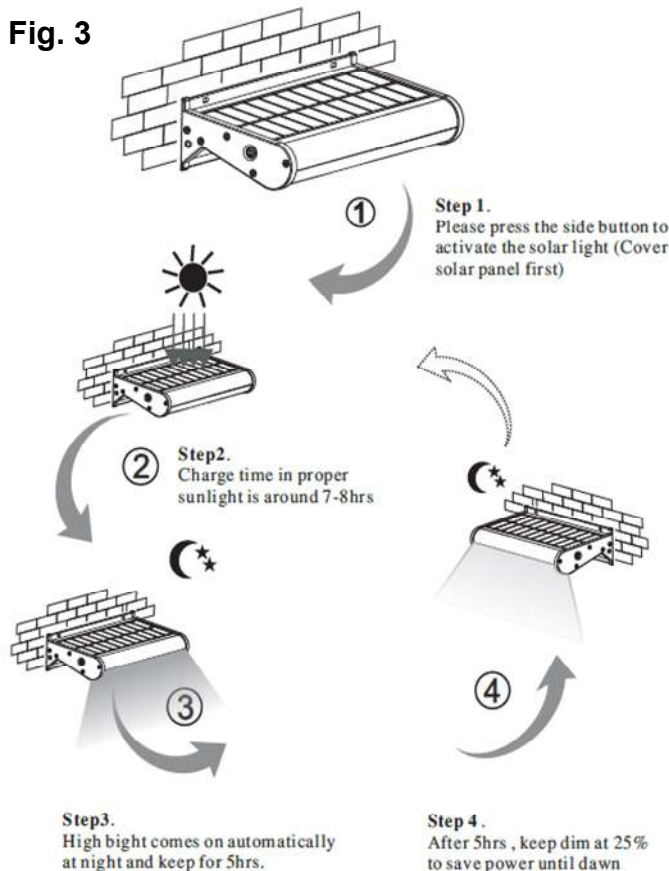


Fig. 3



### Specification

	EE805W1F	EE810W2F
LED illuminator	5W, 24PCs	10W, 48PCs
Solar panel	4.5W	9W
Lithium-ion battery	4.4AH	17.6AH
Charging time	7-8 hrs	7-8 hrs
ON/OFF control	Ambient light trigger	Ambient light trigger
Beam angle	120 degree	120 degree
LED life span	>50,000hrs	>50,000hrs
Light color	Pure white/ Warm white	Pure white/ Warm white
Size	11.8" x 2.6" x 4.5"	23.6" x 2.6" x 4.5"
IP Level	Waterproof IP65	Waterproof IP65

### Notes:

- Avoid placing objects in front of the motion detector
- Avoid installation near air conditioners/central heaters/high voltage systems
- Avoid placing the motion detector head towards high movement areas
- Clean the solar panel with a moist soft cloth at least once a year
- Clean accumulated snow as soon as possible during the snowing season
- Do not expose the light to fire/intense heat or immerse in water
- Never look directly into the light or shine it into another person's eyes