






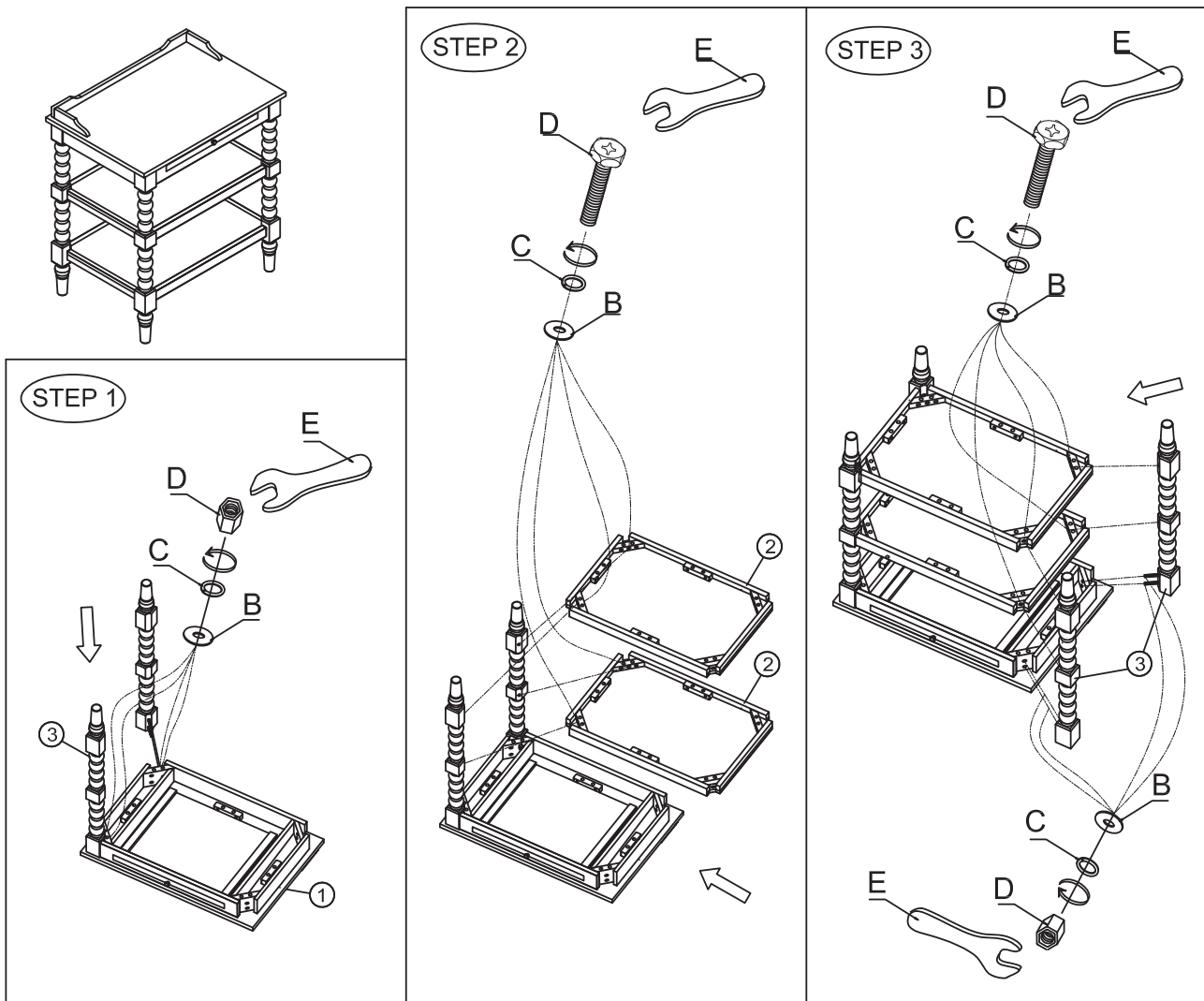
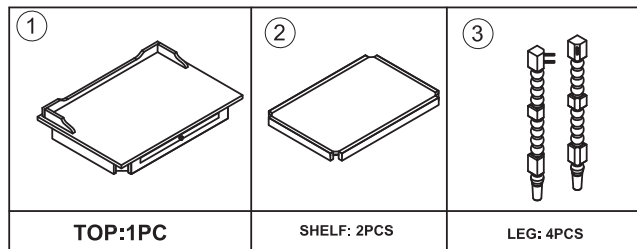
ASSEMBLY INSTRUCTION

DESCRIPTION: OPEN NIGHT STAND

Thank you for purchasing this quality product. Be sure to check all packing material carefully for small parts which may have come loose inside the carton during shipment. Identify and count all parts and compare with the parts List Below:

PART LIST:

HARDWARE LIST			
NO.	Drawing	Description	Q'ty
A		Threaded Bolt (Ø5/16"x2")	8pcs
B		Flat washer (Ø5/16"x19mm)	16pcs
C		Spring washer (Ø5/16")	16pcs
D		Hex Nut (Ø5/16")	8pcs
E		Ø5/16" Wrench(12mm)	1pc



CLEANING INSTRUCTION

Clean the Open Night Stand surface with a furniture polish and a soft cloth.

Made in VietNam