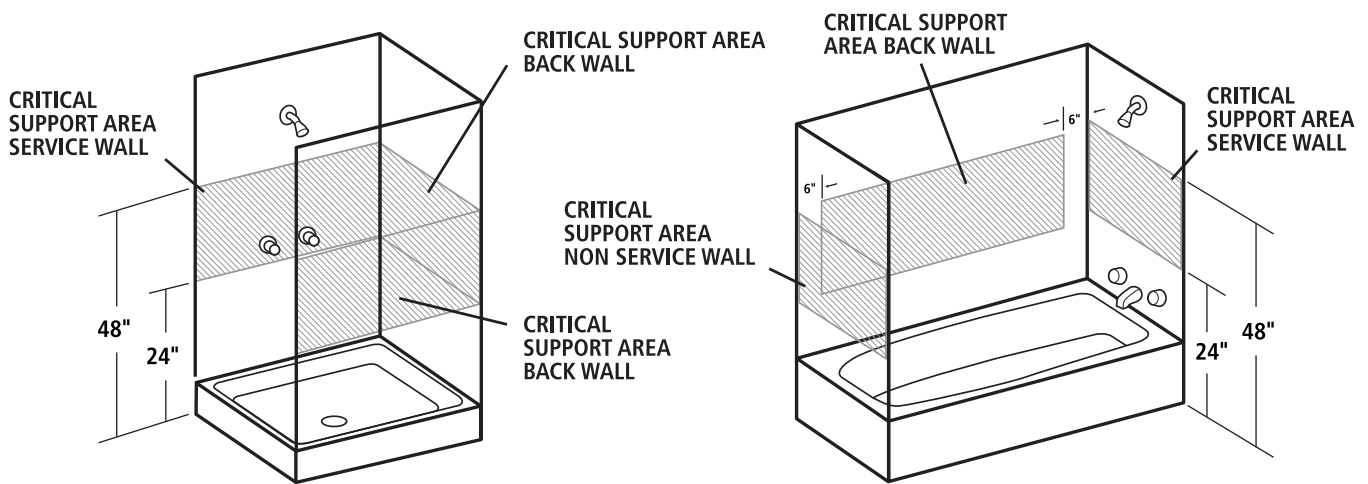
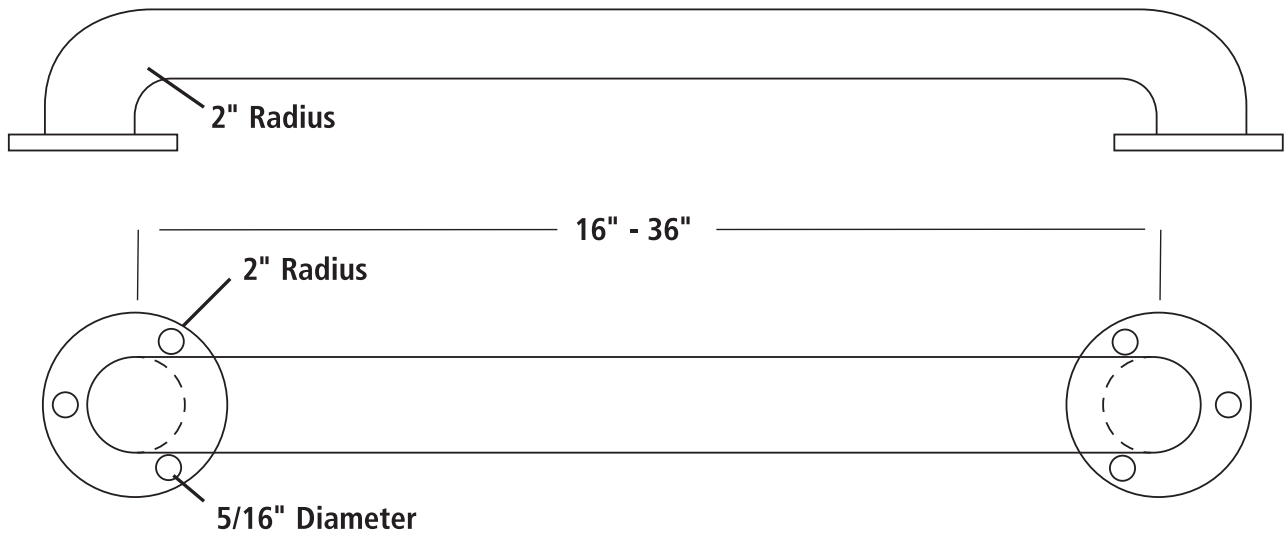


1-1/2" AND 1-1/4" STAINLESS STEEL HANDLEBAR INSTALLATION INSTRUCTIONS



1. Safety codes recommend that handlebars be installed in a tub or shower in the shaded area.
2. Find the wall studs and mark their locations.
3. Tape flanges so they won't slide during installation.
4. For tiles wall screw a 3/16" pilot hole through the tile with a masonry bit.
(if you are installing a handlebar on a sheetrocked wall go to step 6)
5. Next for a tiled wall drill a 5/32" hole through the stud.
6. Attach handlebar with 1-1/2" screws provided in each package, making sure to hit a stud(s).
7. For a handlebar with concealed flanges, line up notches on flanges with notches located on mounting brackets then lock into place.

Note: If you can not locate two wall studs, install the handlebar vertically on one stud.
HANDLEBARS MUST BE ATTACHED TO WALL STUD(S).



Note: Tube is 1-1/2" Diameter - 304 S.S. - .049
Wall Flange is .075 - 304 S.S.