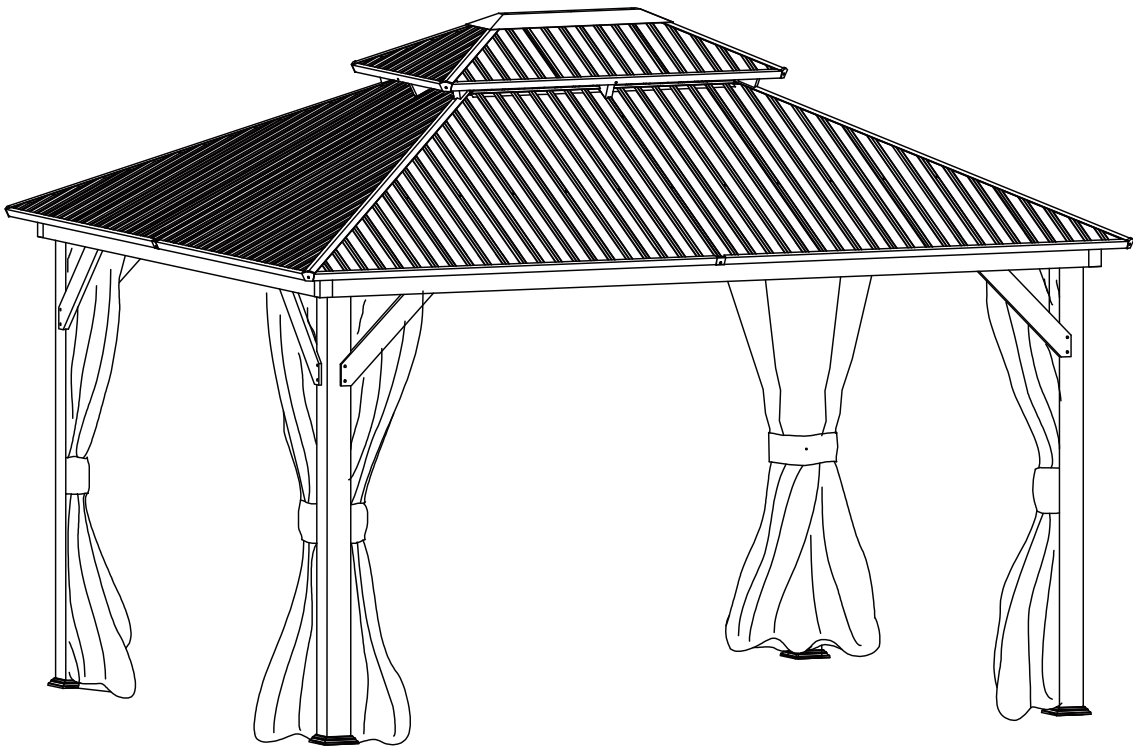


OWNER'S MANUAL

11'X13' Double Hardtop Wood Gazebo



Contact Us

If you have any questions,
Please contact customer service.

Email: Guluk2023@outlook.com

Scan the QR code to watch the installation video.



SAFETY PRECAUTIONS



BEFORE ASSEMBLY, YOU NEED TO KNOW:

- ★ 1.Inventory all parts listed on Part Identification page inside this manual. Contact our Customer Service Team if any parts are missing or damaged.
- ★ 2.You will need additional tools to complete your wood gazebo. See inside this manual for required and optional materials and quantities.
- ★ 3.To ensure proper assembly you must build your gazebo on a level surface.Keep all children and pets away from assembly area.
- ★ 4.Do not assemble the product in days of wind or rain.
- ★ 5.Wear gloves to avoid injury from possible sharp edges of individual elements before assembly.
- ★ 6.During installation, follow all safety warnings provided with your tools and use OSHA approved safety glasses.
- ★ 7.2-4 people is required to install safely.
- ★ 8.To avoid damages to the product its parts and surroundings, use the proper tools.The use of a ladder(s) is required.
- ★ 9.Read each step carefully before beginning any assembly and make sure you understand
- ★ 10.each step. If you are missing a part, please contact us with email support@happatio.com



AFTER ASSEMBLY, YOU NEED TO KNOW:

- ★ 1.Check for sharp edges or protruding screw threads, add washers if required.
- ★ 2.Inspect and tighten all hardware after completion of assembly; after first month of use; and then annually.
- ★ 3.Do not over-tighten as to cause crushing and splintering of wood.
- ★ 4.The outdoor gazebo is designed primarily to extend the outdoor use of your home. If you wish to suspend products to the structure, ensure that the total weight of articles does not exceed 330 pounds. Suspend nothing from the structure in case of strong winds.
- ★ 5.Wood is not flame retardant and has the potential of burning. Do not place any type of heat source on/under the structure or within 5 ft of the unit including, but not limited to, a barbecue, chiminea or fire pits.

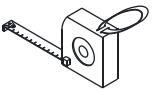
Email:
Guluk2023@outlook.com

GAZEBO

- ★ 6. Wood components are manufactured with Pine Wood which is protected with factory applied water-based stain. As your pavilion acclimates to its new environment, natural characteristics of the wood can show in the form of checks (cracks) and weathering in the lumber. This is normal and it will not affect the structural integrity of your structure and is not covered under warranty.
- ★ 7. Annual application of water-based water-repellent sealant or stain is important and will help reduce weathering and check

TOOLS RECOMMENDED

Z1



Tape Measure

Z2



Carpenters Level

Z3



Drill/Driver

Z4



Wrench

Z5



8' Step Ladder

Z6



Screwdriver

Z7



3mm carpenter drill head

Z8



Z9



Hex socket wrench

Email:
Guluk2023@outlook.com

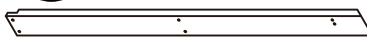
GAZEBO

A1



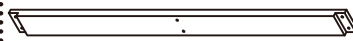
2PCS

A2



2PCS

A3



2PCS

A4



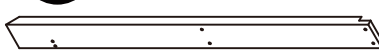
2PCS

A5



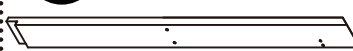
2PCS

B1



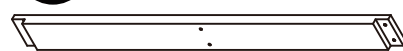
2PCS

B2



2PCS

B3



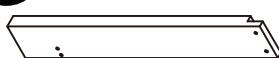
2PCS

B4



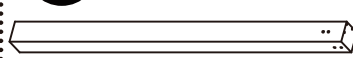
2PCS

B5



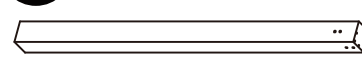
2PCS

C1



2PCS

C2



2PCS

D1



4PCS

D2



4PCS

1#

M10X190MM



16PCS

2#

M10



16PCS

3#

M10



32PCS

4#

M6X65MM



24PCS

5#

M6



24PCS

6#

M6



24PCS

Email:
Guluk2023@outlook.com

GAZEBO

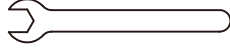
7#

M3.5X60MM



32PCS

T1



1PC

T2



1PC

E1



4PCS

E2



4PCS

F1



4PCS

F2



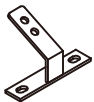
4PCS

G1



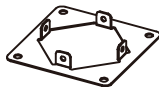
4PCS

G2



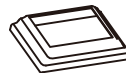
4PCS

H1



4PCS

H2



4PCS

J1



4PCS

J2



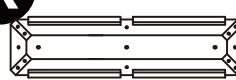
4PCS

J3



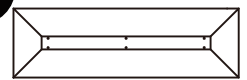
8PCS

K



1PC

L



1PC

M



4PCS

N



4PCS

P



2PCS

Q



2PCS

Email:
Guluk2023@outlook.com

GAZEBO

R1



12PCS

R2



4PCS

S



44PCS

T1



2PCS

T2



2PCS

U1



2PCS

U2



2PCS

U3



2PCS

U4



2PCS

U5



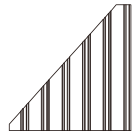
4PCS

U6



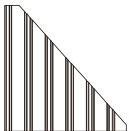
4PCS

V1



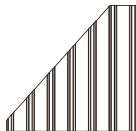
2PCS

V2



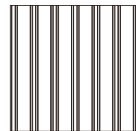
2PCS

V3



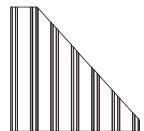
2PCS

V4



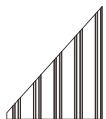
2PCS

V5



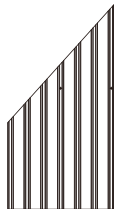
2PCS

W1



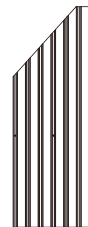
2PCS

W2



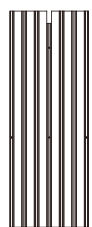
2PCS

W3



2PCS

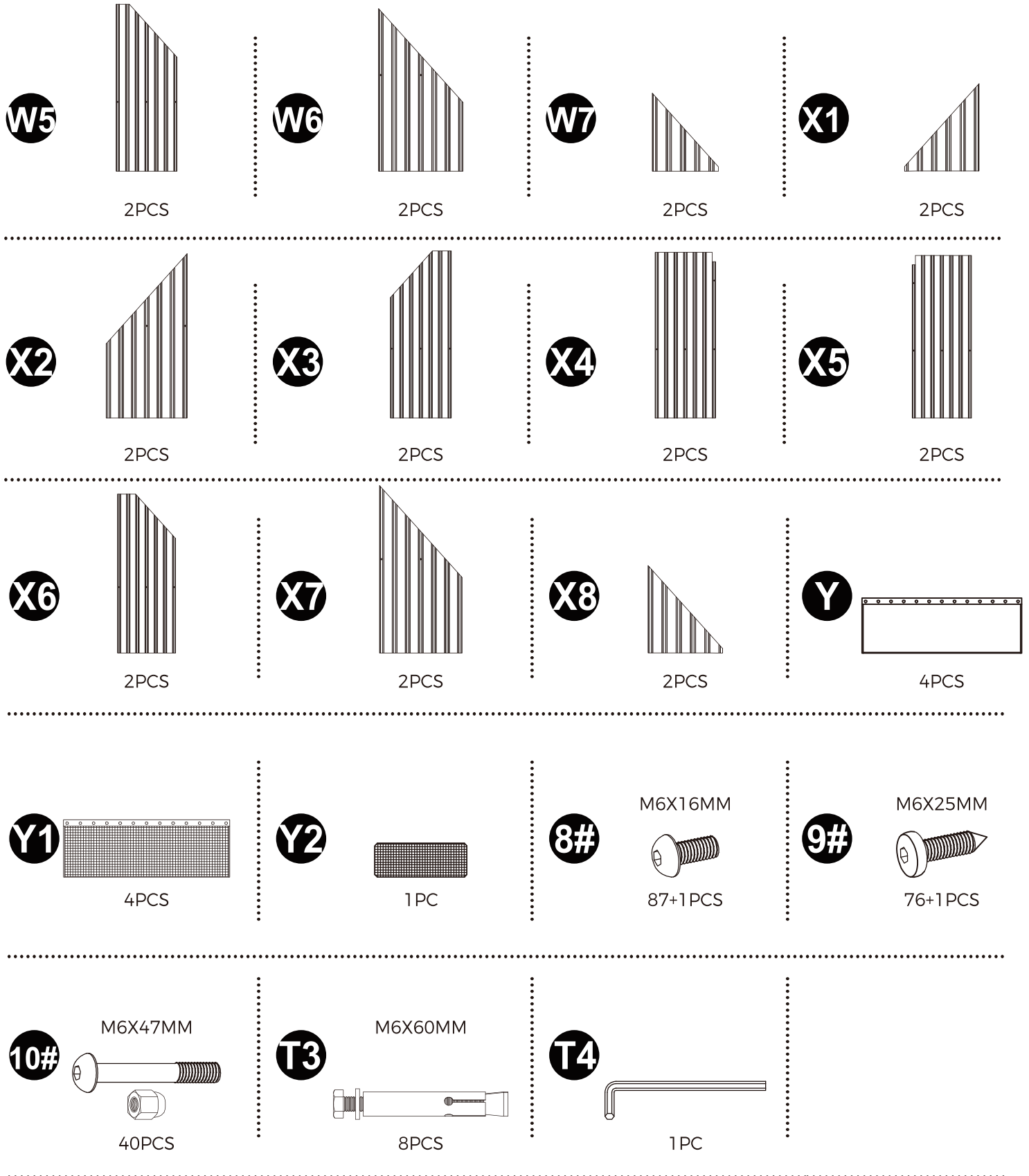
W4



2PCS

Email:
Guluk2023@outlook.com

GAZEBO



Email:
Guluk2023@outlook.com

GAZEBO

STEP 1

4#

M6X65MM Bolt
12PCS

5#



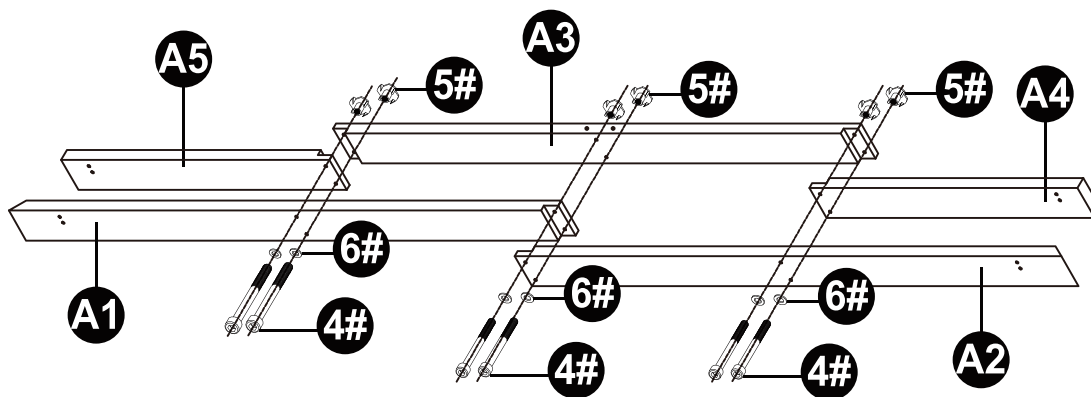
M6
12PCS

6#



M6
12PCS

x2



STEP 2

4#

M6X65MM Bolt
12PCS

5#



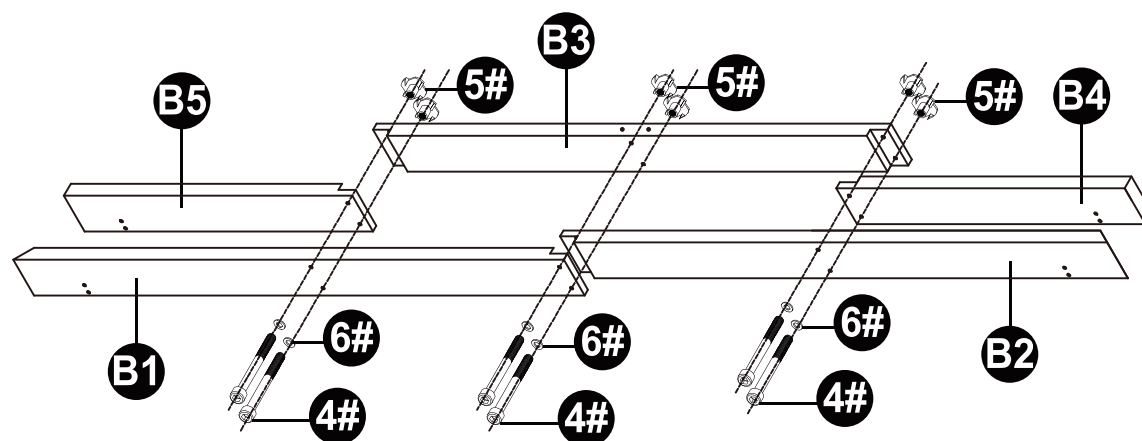
M6
12PCS

6#



M6
12PCS

x2



Email:
Guluk2023@outlook.com

GAZEBO

STEP 3

9#

M6X25MM Bolt
16PCS

H1

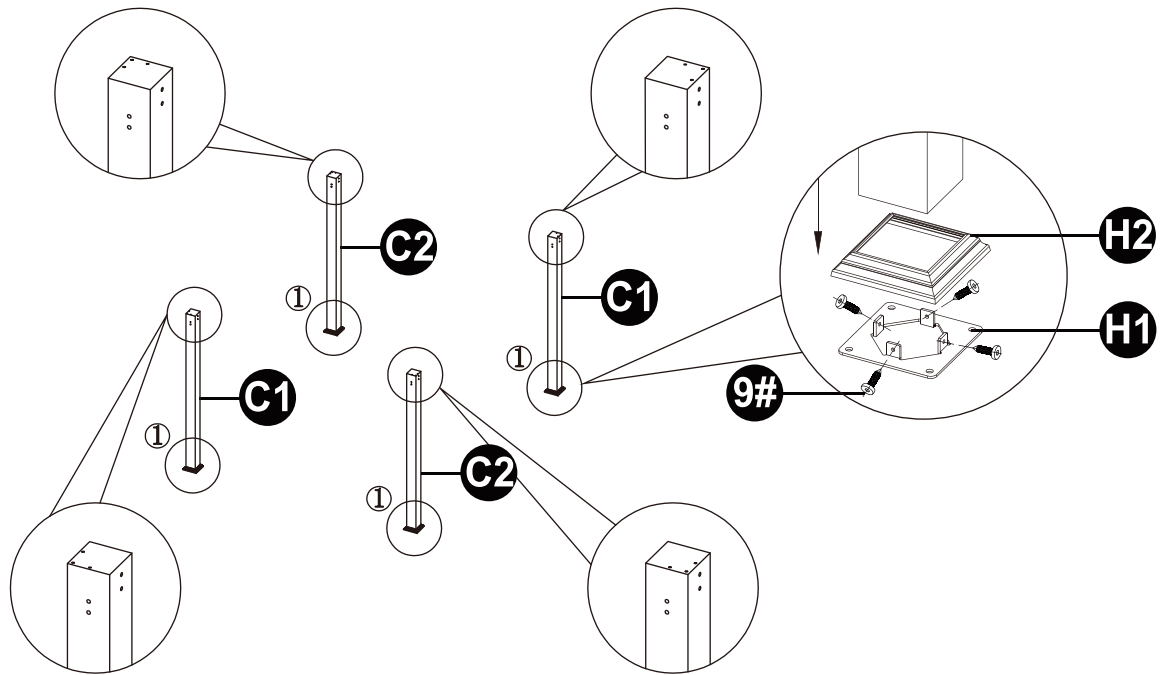


4PCS

H2



4PCS



STEP 4

1#

M10X190MM Bolt
8PCS

2#

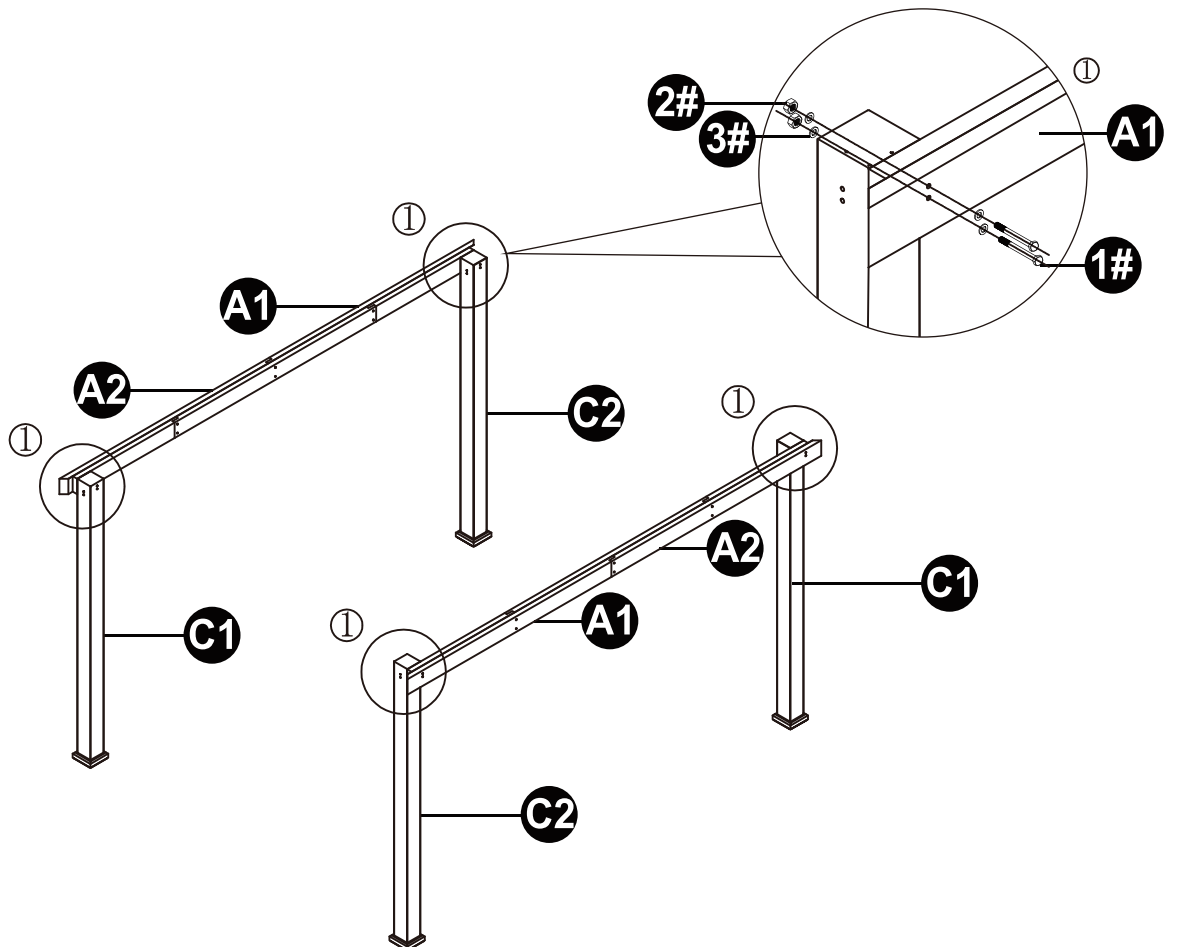


8PCS

3#



16PCS



Email:
Guluk2023@outlook.com

GAZEBO

STEP 5

1#

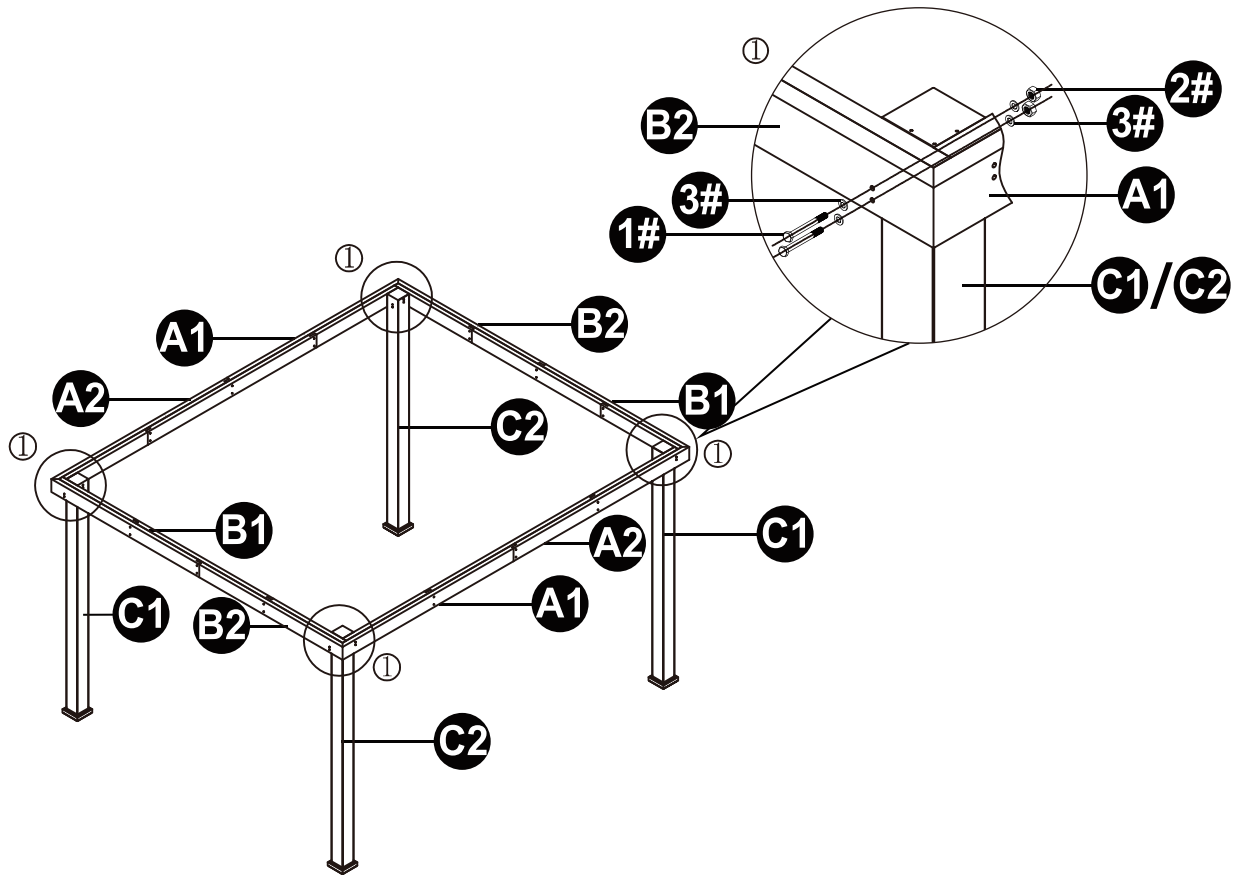
M10X190MM Bolt
8PCS

2#

8PCS

3#

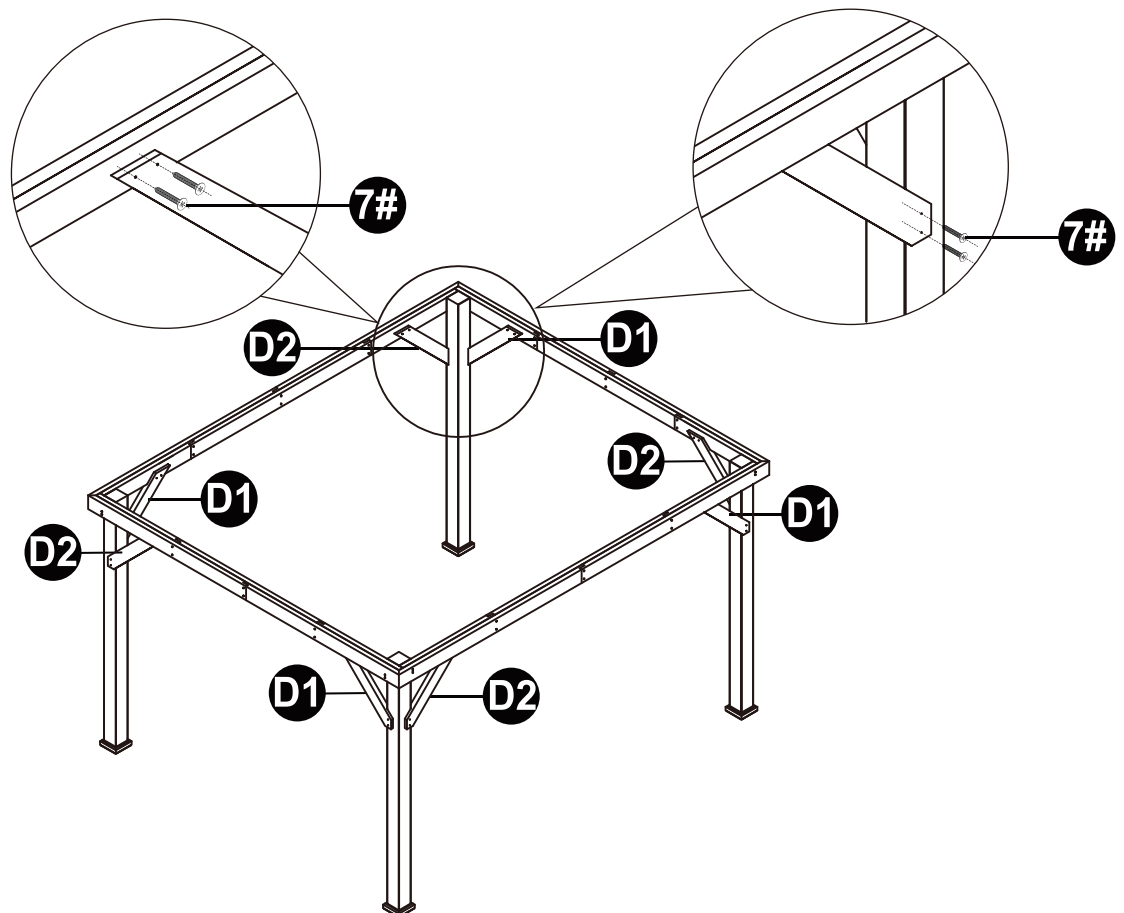
16PCS



STEP 6

7#

M3.5X60MM Bolt
32PCS



Email:
Guluk2023@outlook.com

GAZEBO

STEP 7

G1



4PCS

9#

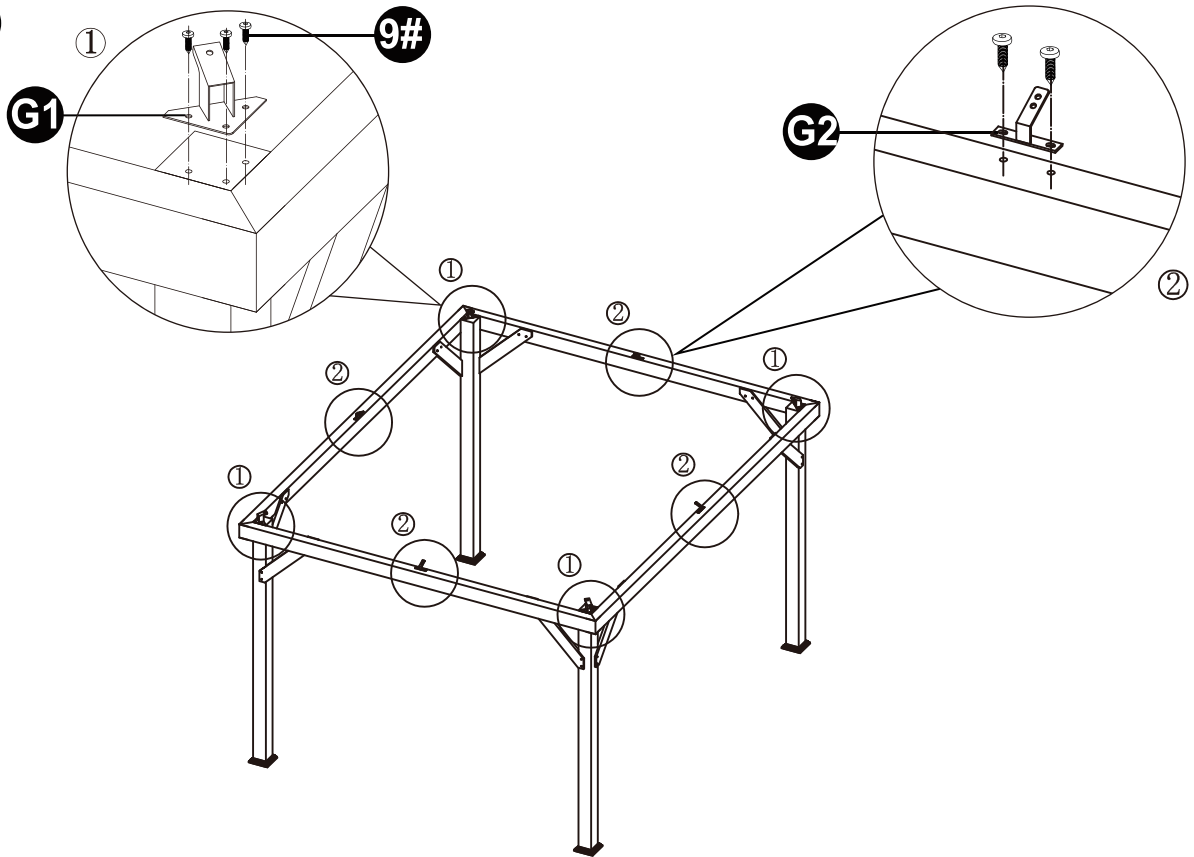


M6X25MM Bolt
20PCS

G2



4PCS

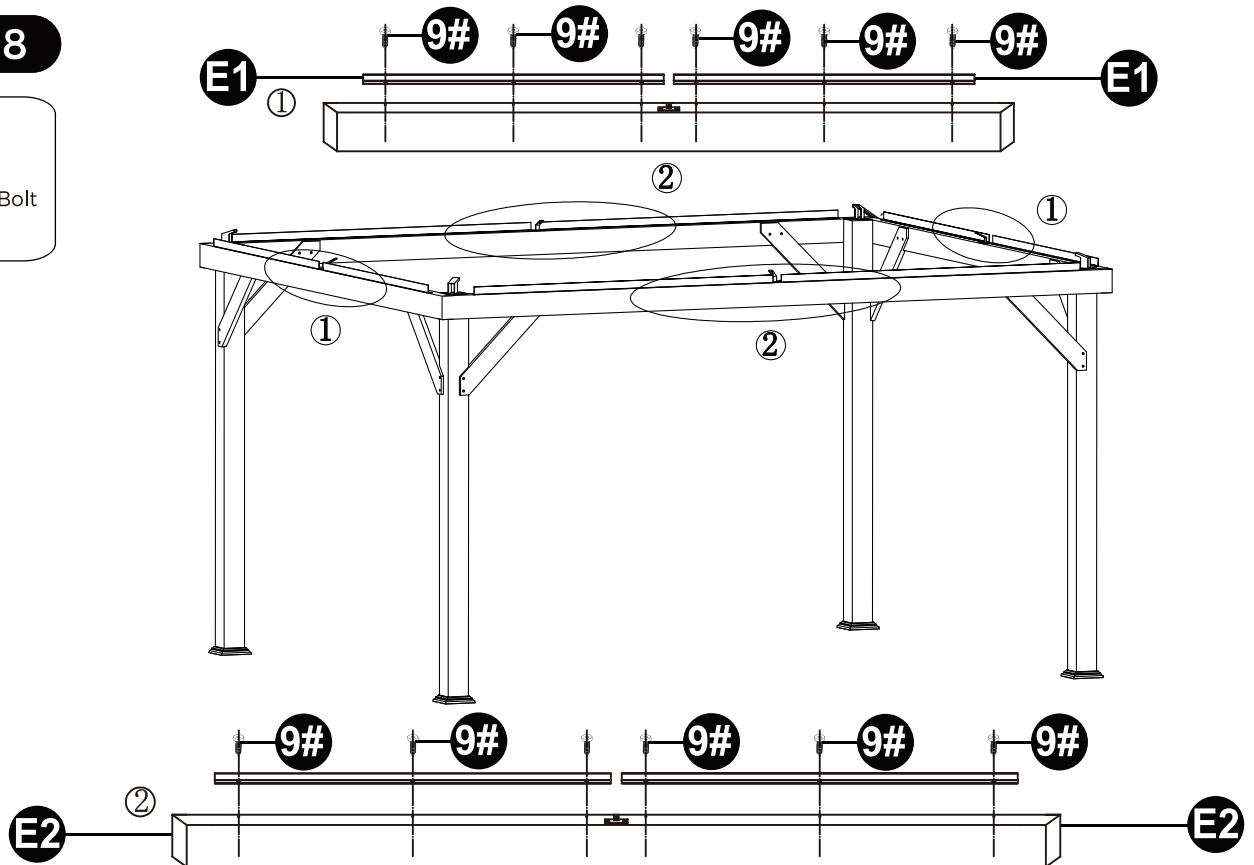


STEP 8

9#



M6X25MM Bolt
24PCS



Email:
Guluk2023@outlook.com

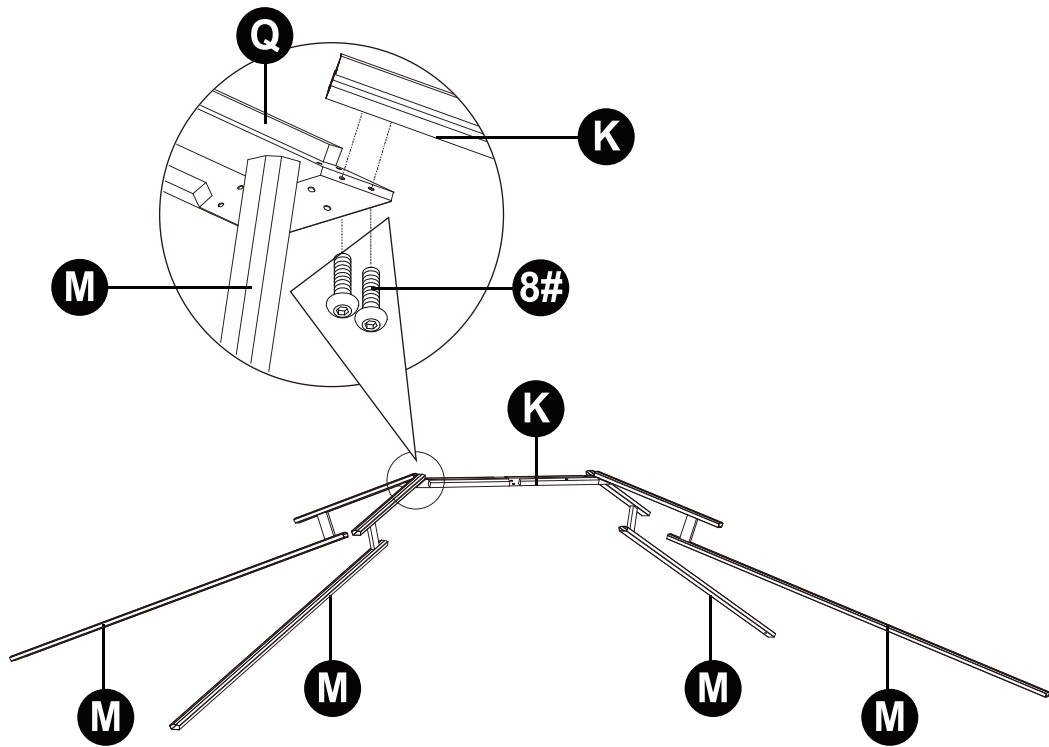
GAZEBO

STEP 9

8#



M6X16MM Bolt
8PCS

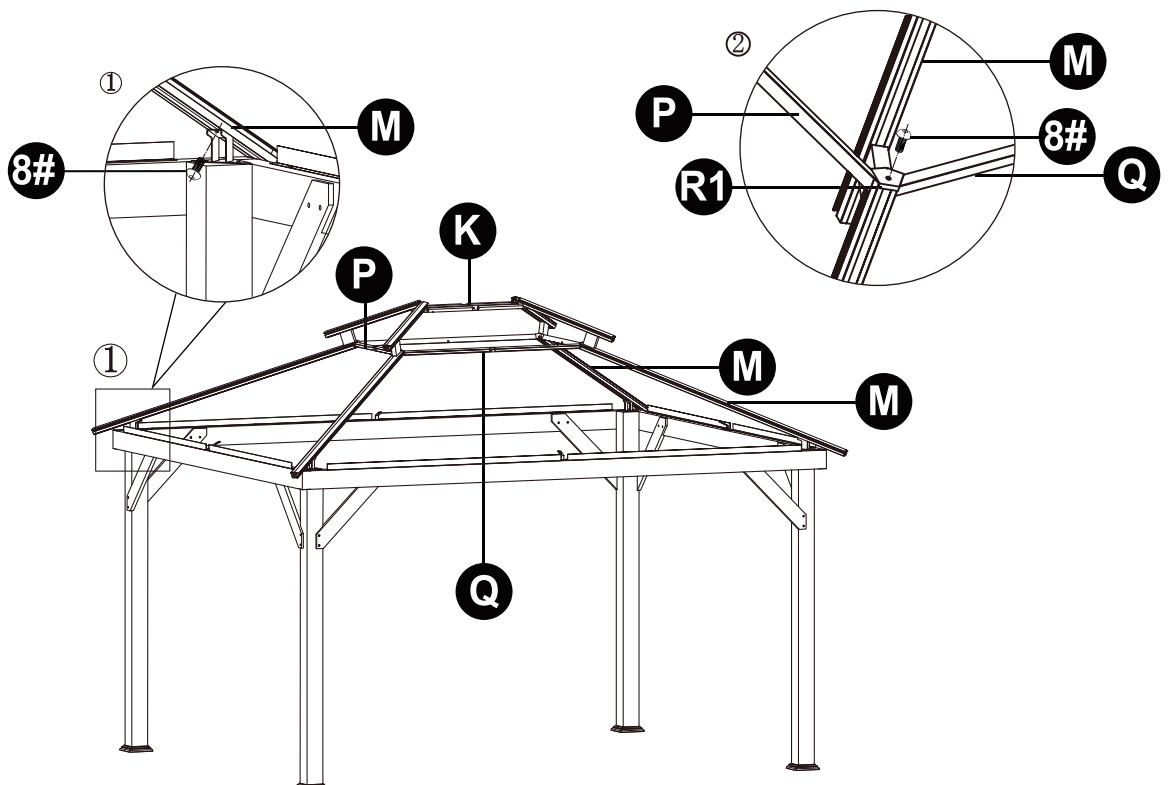


STEP 10

8#



M6X16MM Bolt
8PCS



Email:
Guluk2023@outlook.com

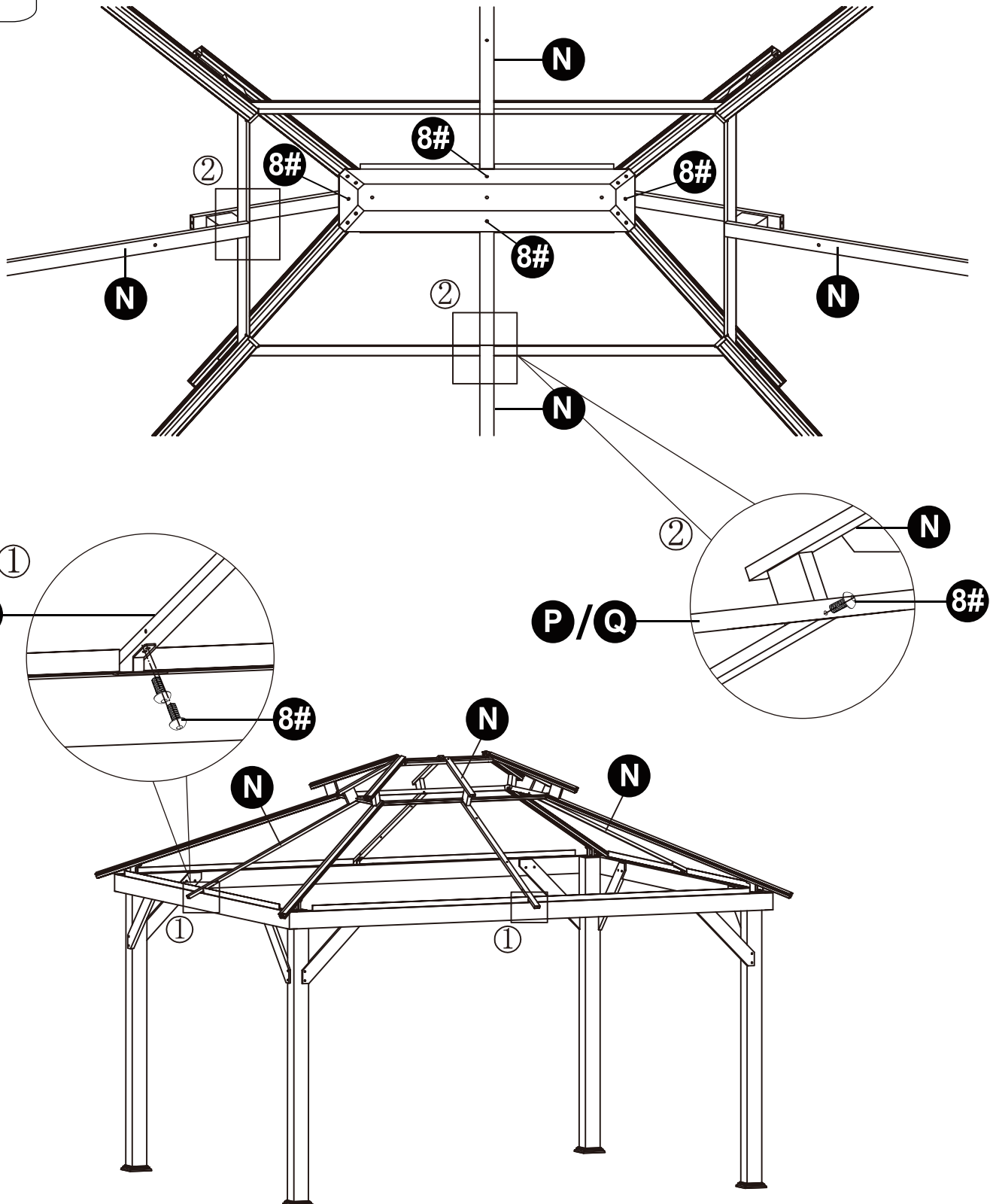
GAZEBO

STEP 11

8#



M6X16MM Bolt
16PCS



Email:
Guluk2023@outlook.com

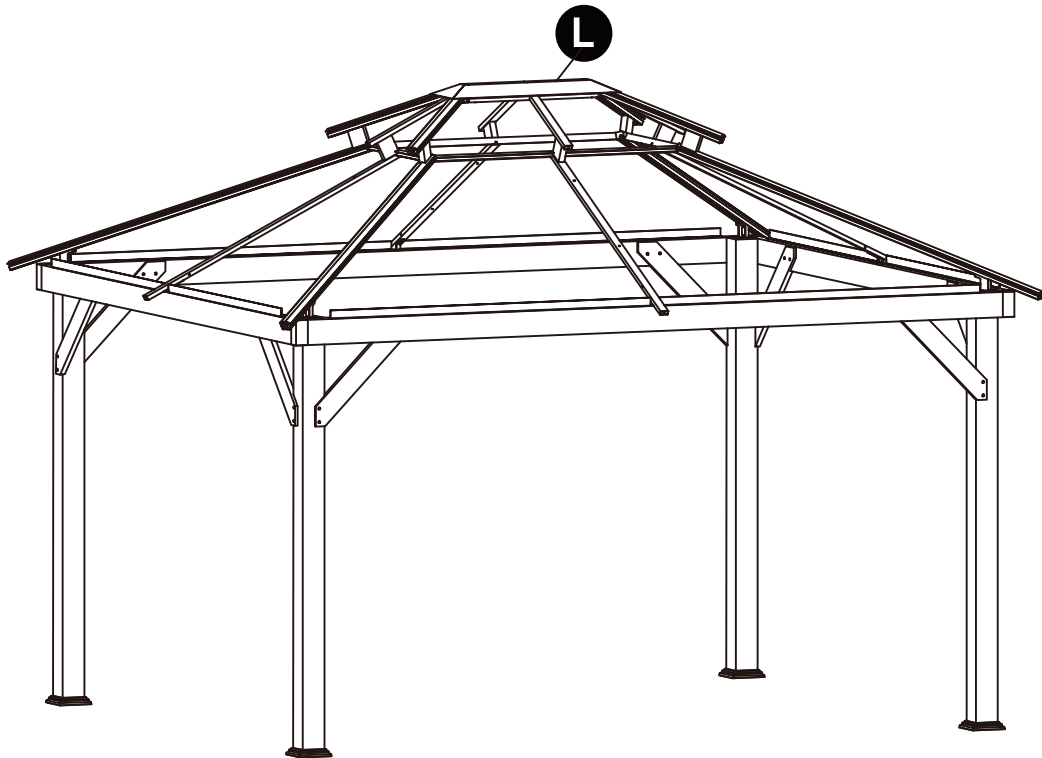
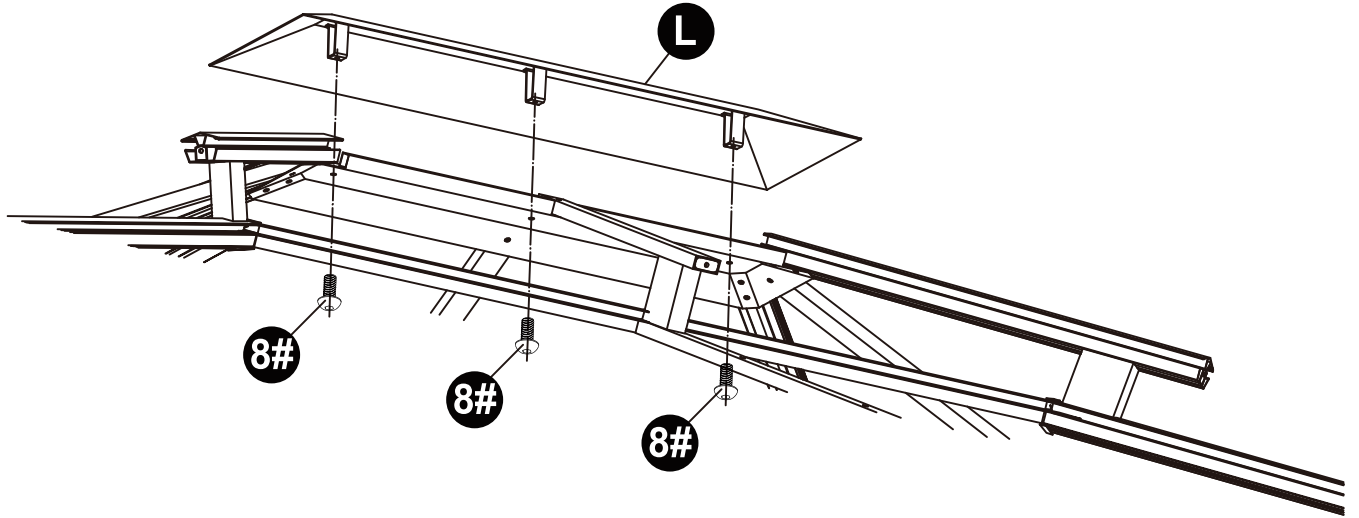
GAZEBO

STEP 12

8#



M6X16MM Bolt
3PCS



Email:
Guluk2023@outlook.com

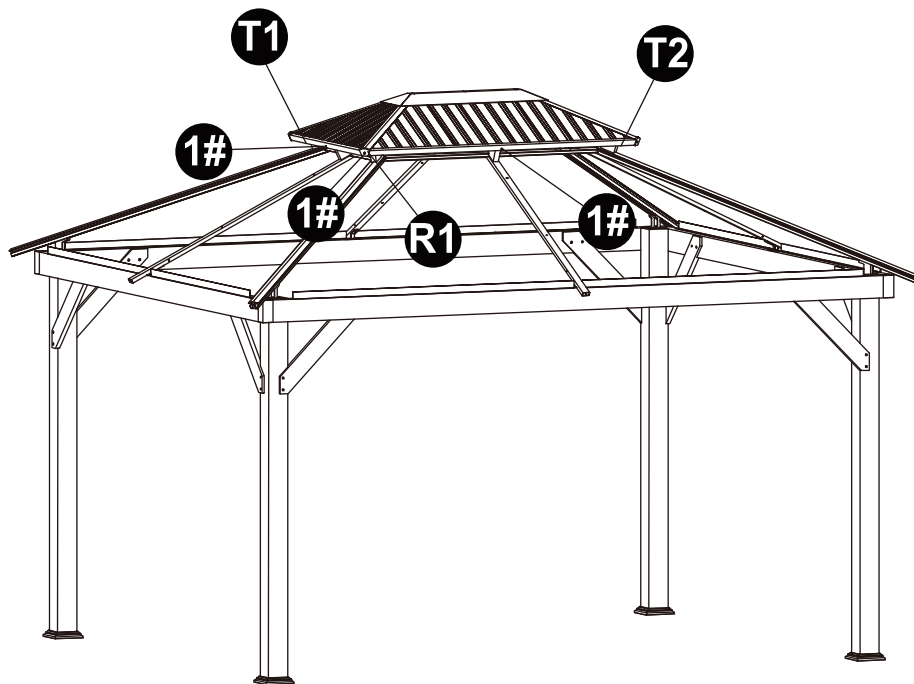
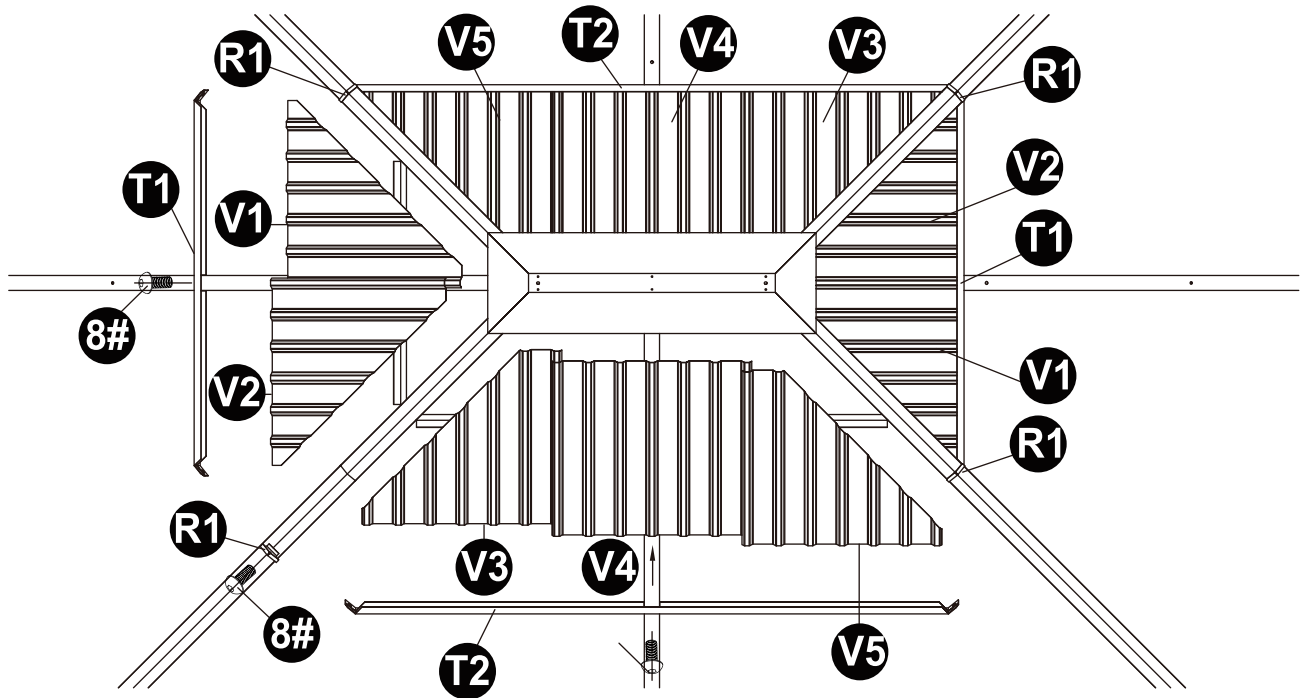
GAZEBO

STEP 13

8#



M6X16MM Bolt
8PCS



Email:
Guluk2023@outlook.com

GAZEBO

STEP 14

8#

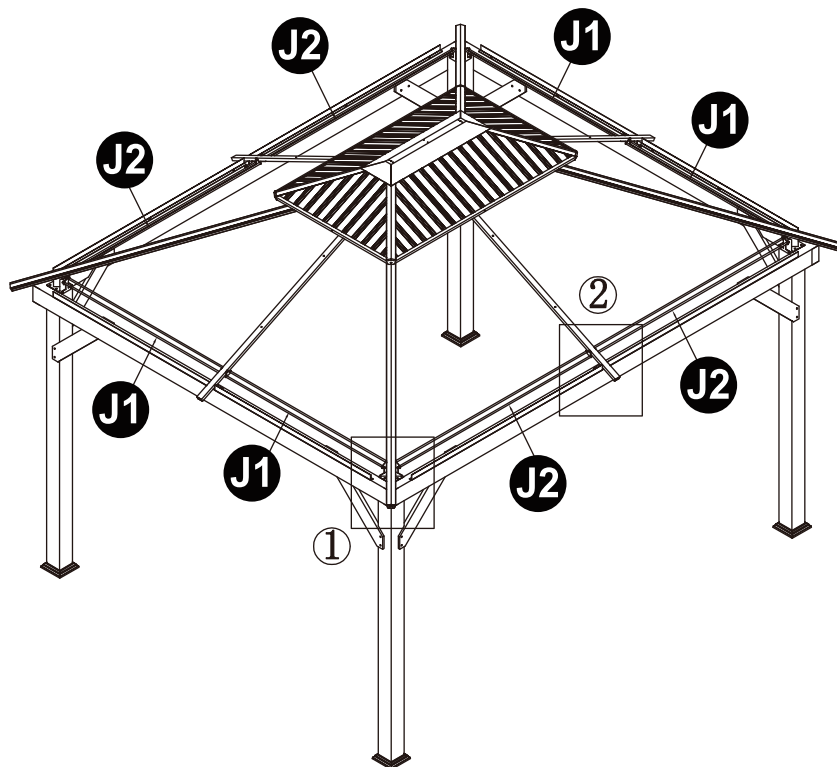
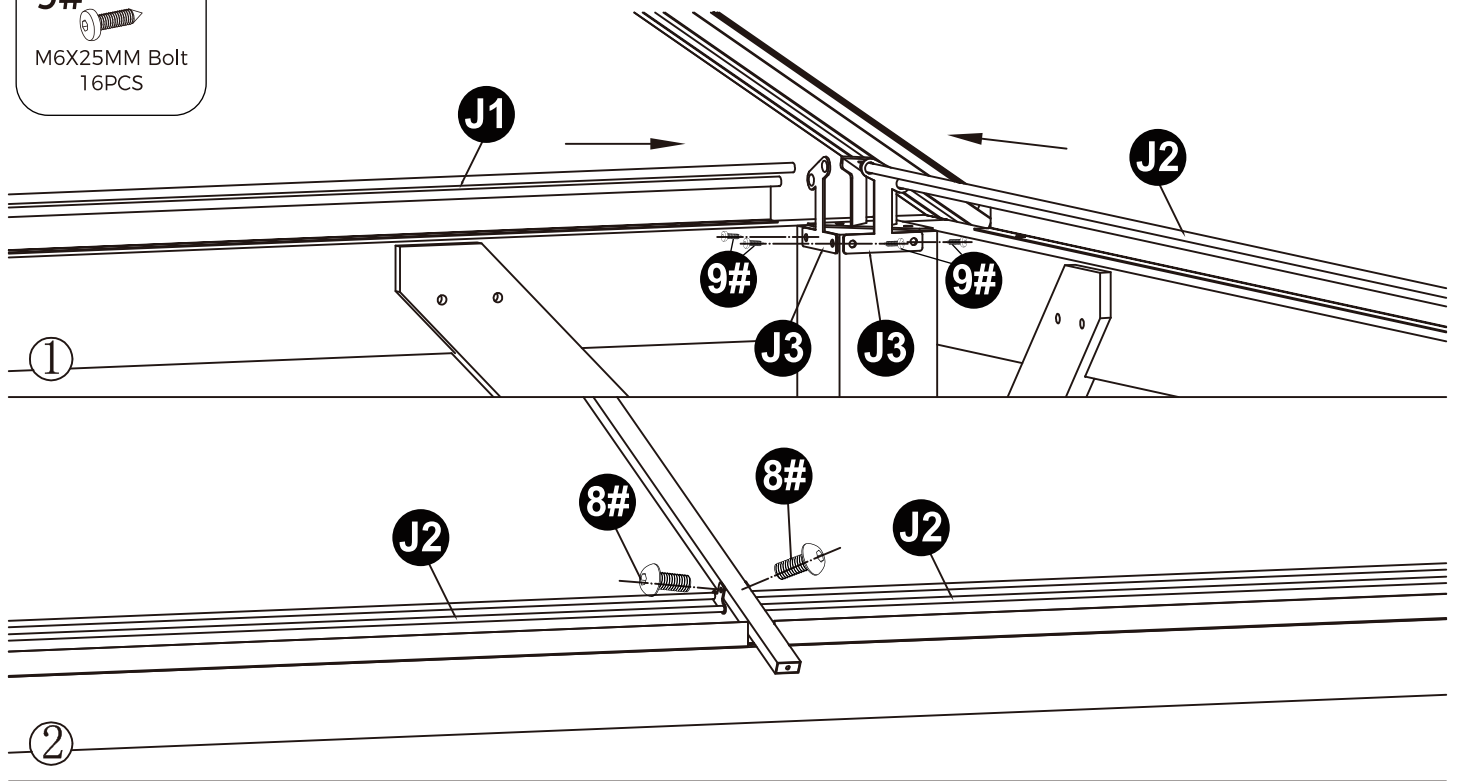


M6X16MM Bolt
8PCS

9#



M6X25MM Bolt
16PCS



Email:
Guluk2023@outlook.com

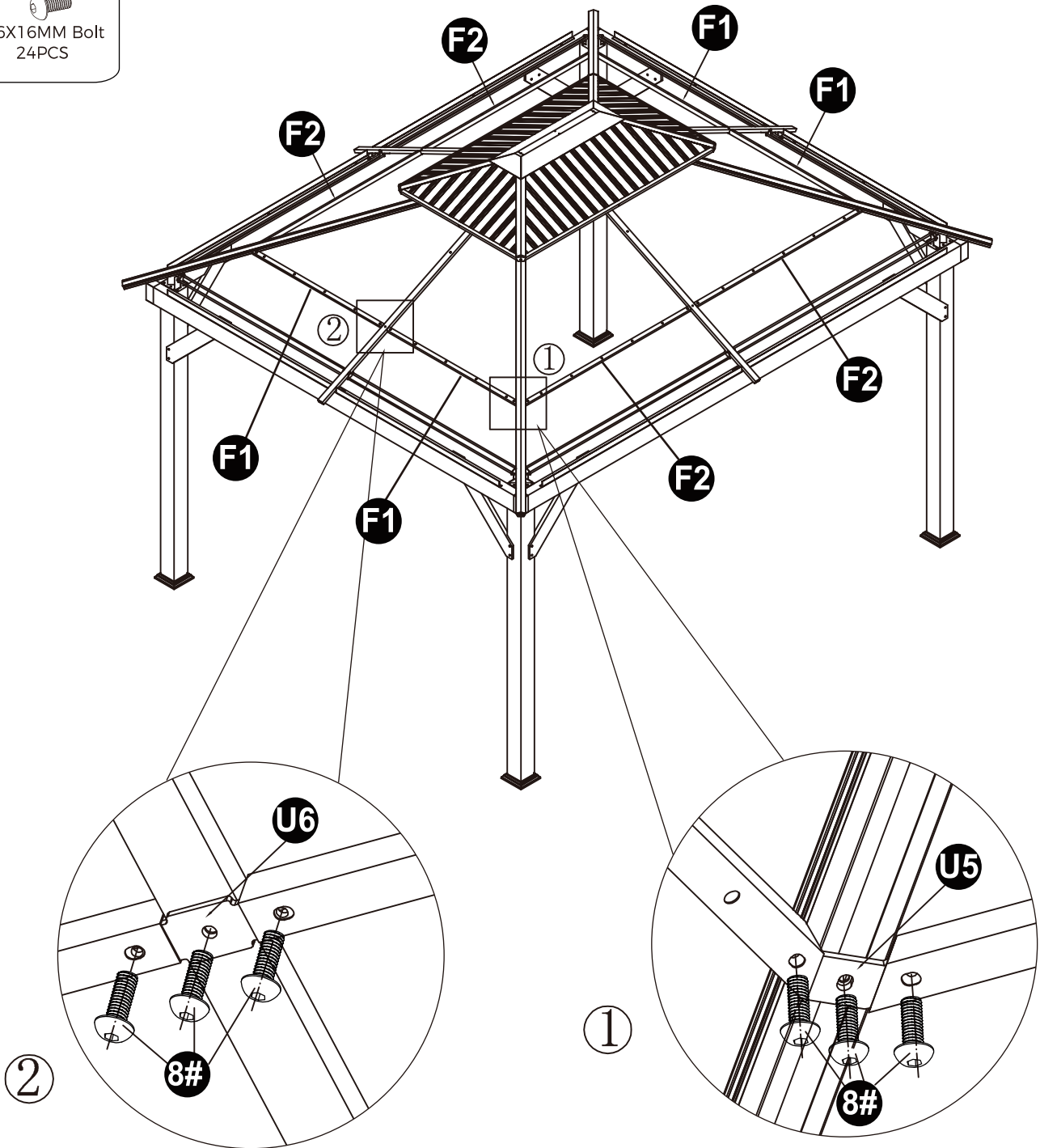
GAZEBO

STEP 15

8#



M6X16MM Bolt
24PCS



Email:
Guluk2023@outlook.com

GAZEBO

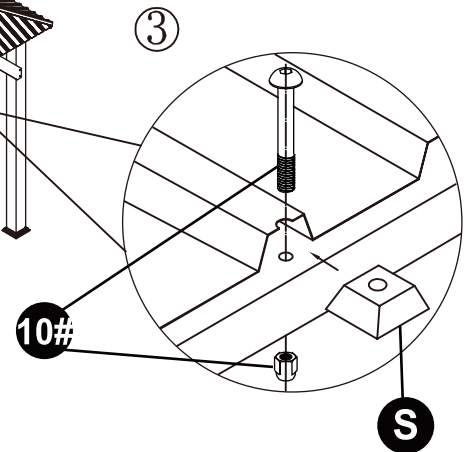
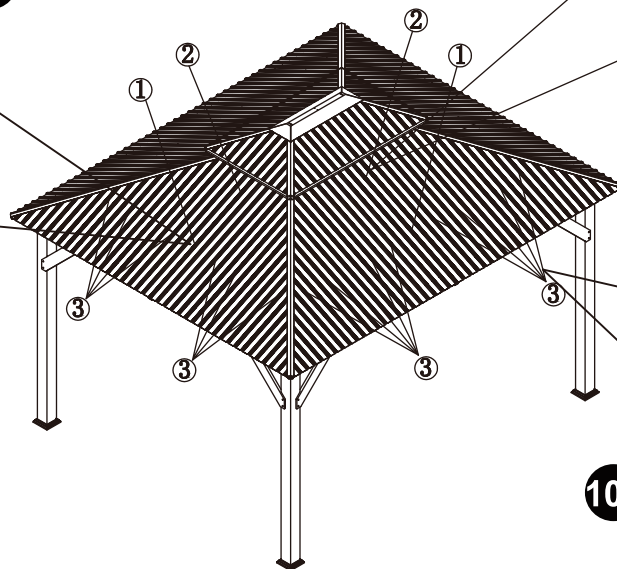
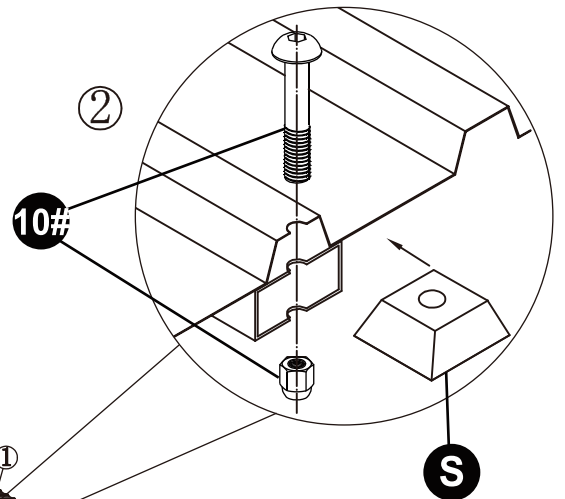
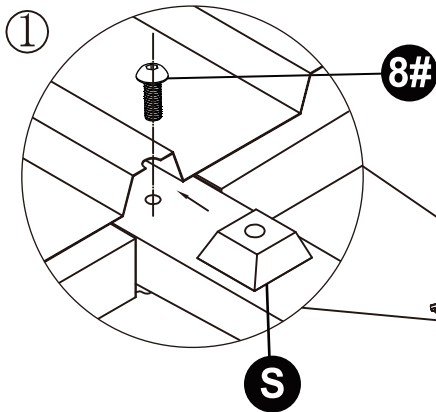
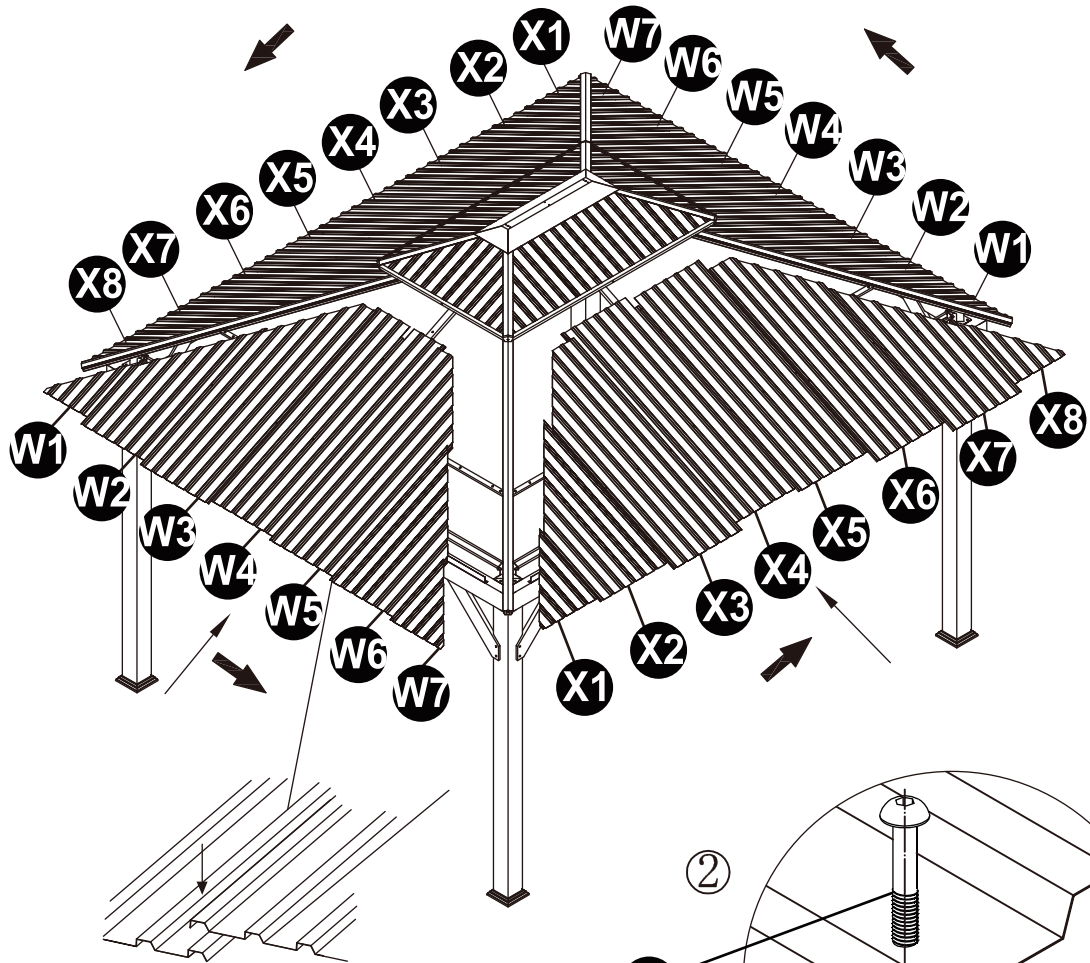
STEP 16

8#

M6X16MM Bolt
4PCS

10#

M6X47MM Bolt
40PCS



Email:
Guluk2023@outlook.com

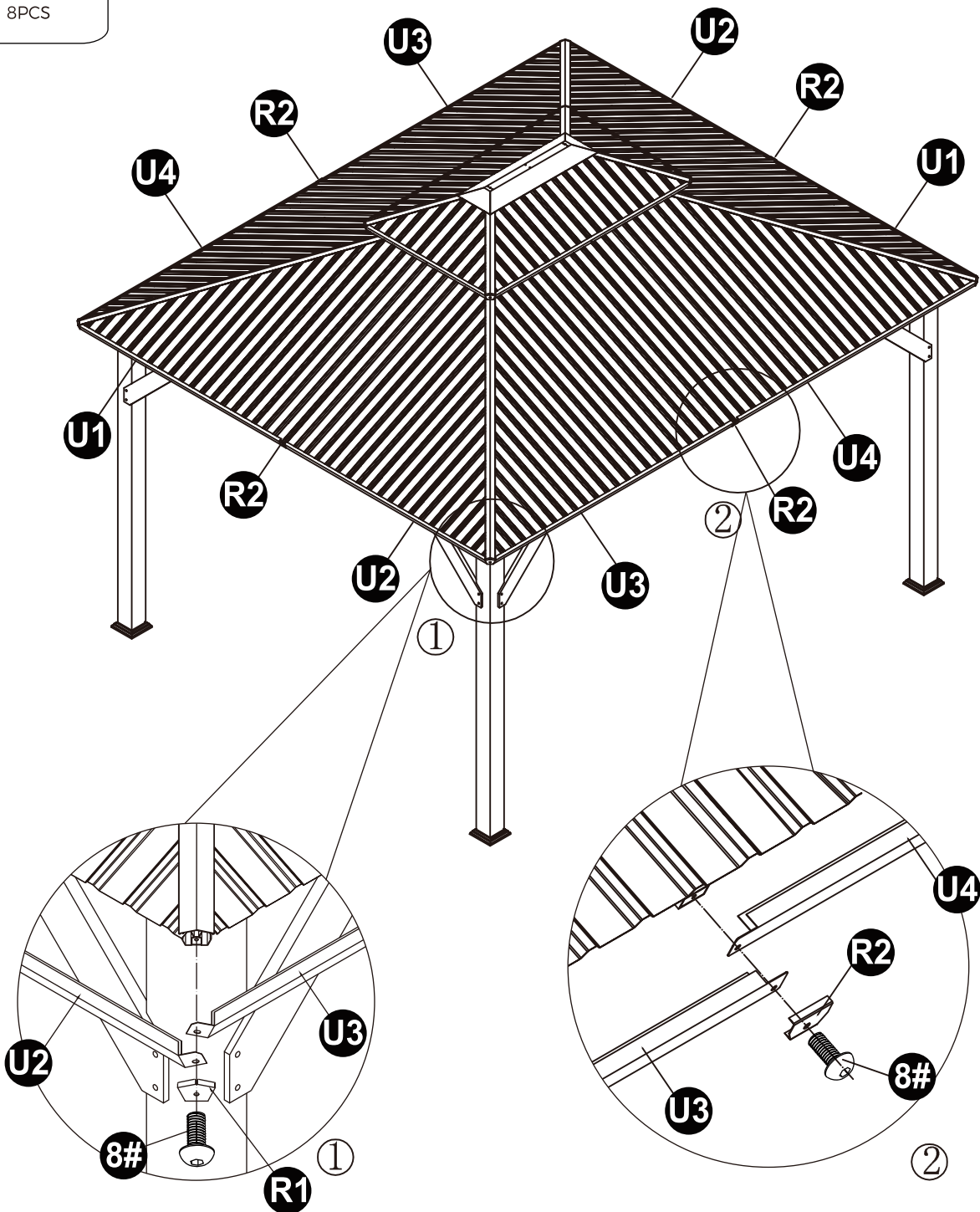
GAZEBO

STEP 17

8#



M6X16MM Bolt
8PCS

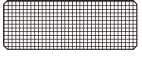


Email:
Guluk2023@outlook.com

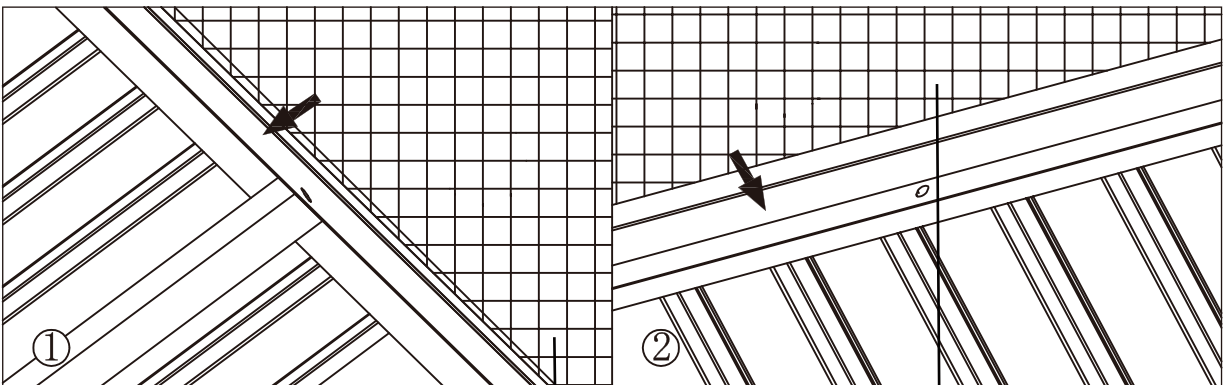
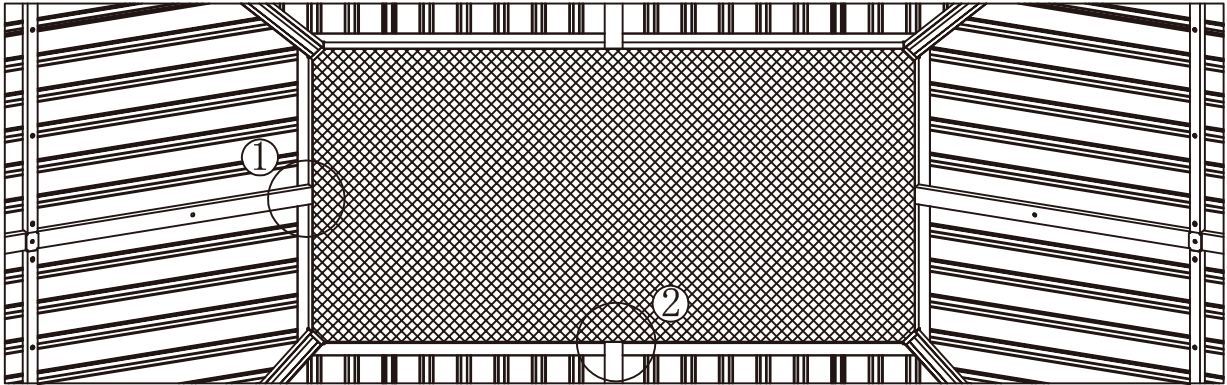
GAZEBO

STEP 18

Y2



1PC



Email:
Guluk2023@outlook.com

GAZEBO

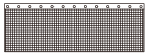
STEP 19

Y

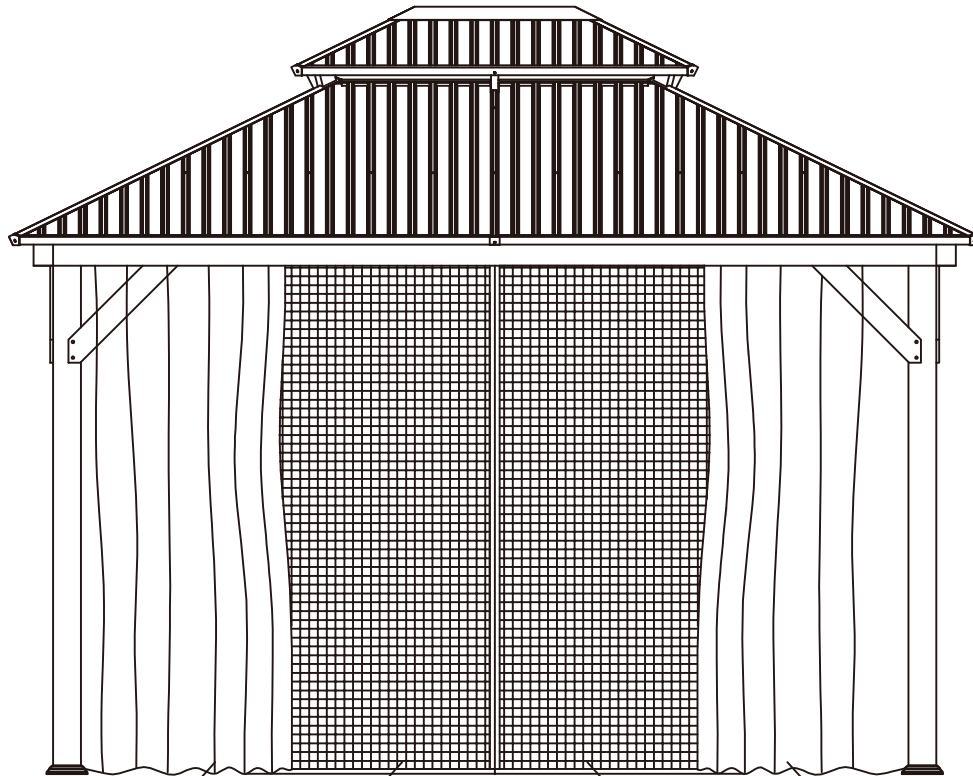


4PCS

Y1



4PCS

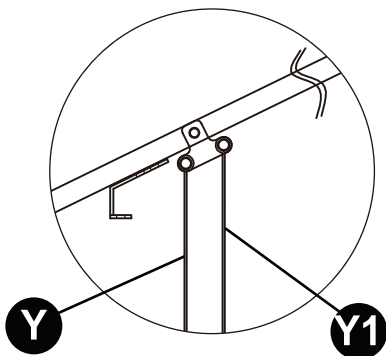


Y

Y1

Y1

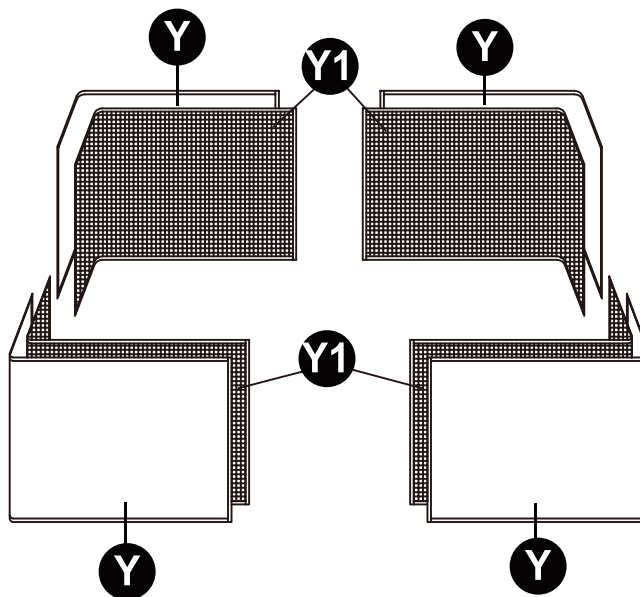
Y



Y

Y1

Y



Y

Y1

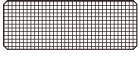
Y

Email:
Guluk2023@outlook.com

GAZEBO

COMPLETE

8#

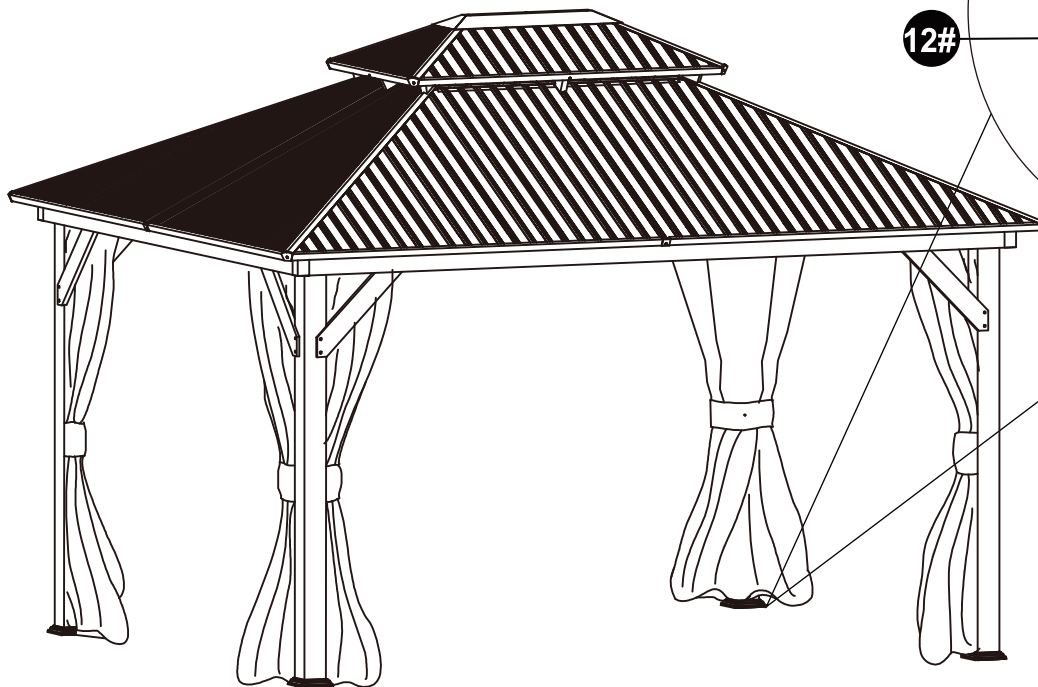
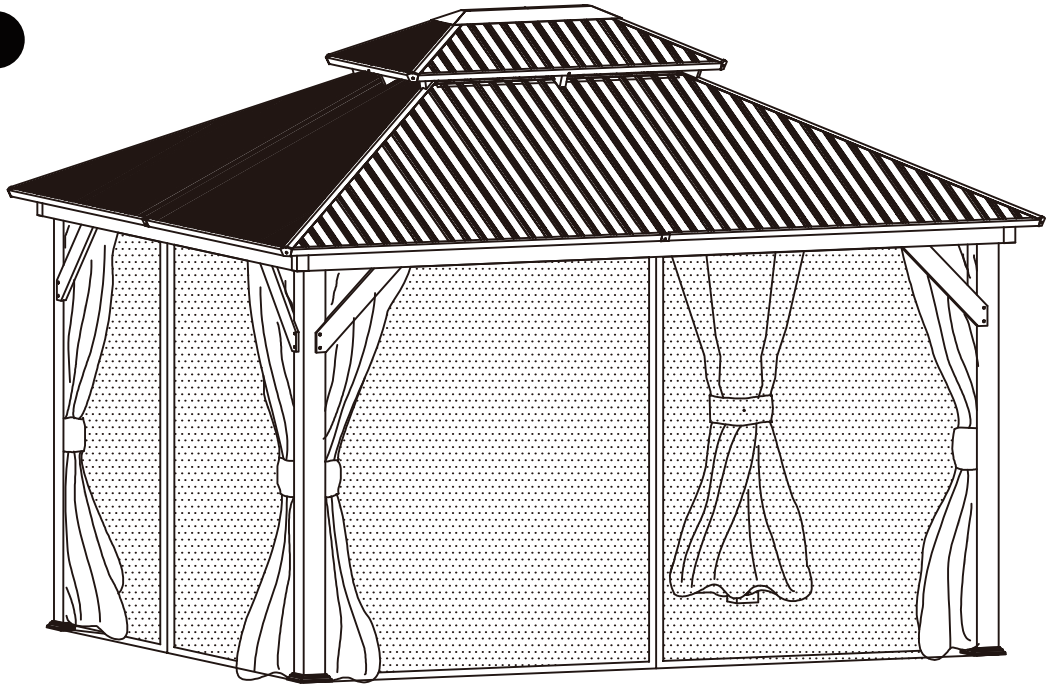


1PC

T3



M6X60MM Bolt
8PCS



①

12#

H2

12#

H1

Email:
Guluk2023@outlook.com

PRODUCT WARRANTY INSTRUCTION

Free Warranty Period:

The free warranty period starts from the product receipt date and lasts one year.

Coverage during the Free Warranty Period:

1. If any components of the purchased product are damaged due to non-human-induced reasons (natural wear and tear excluded), corresponding new parts will be replaced free of charge.
2. If the entire purchased product is damaged due to non-human-induced reasons (natural wear and tear excluded) and cannot be further used, corresponding parts or a brand-new product will be replaced free of charge.

Coverage after the Free Warranty Period:

After the warranty period expires, replacement components will be provided to customers at cost price for continued service.

Additional Services:

After purchasing the product, customers can consult our staff for any product-related inquiries.

Contact Email: Guluk2023@outlook.com

Contact Phone: 9144101739

Email:
Guluk2023@outlook.com