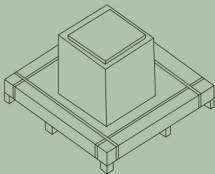
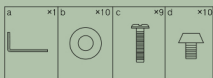
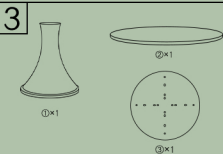
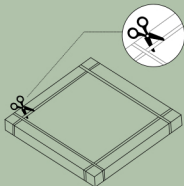


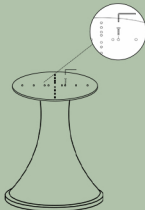
1 Check all packages: Tabletop, Connecting plate, Base. Please check the sample pictures for reference only.



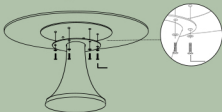
2 Cut off the PP belt with sissor and open the packaging box directly.



4 At first, Place the connecting plate on the base.

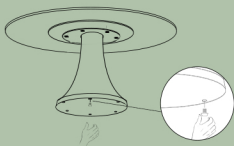


5 After the holes in the three parts of the tabletop, connecting plate and base are aligned, we can start to tighten the screws against the holes.



Tips: It is recommended not to tighten each screw too much at the beginning. When you get to the last screw, tighten the screws that are not tightened in front.

6 Installation is optional and can be decided based on actual circumstances.



7 Assembly completed. Hope you can enjoy the warm dining moments that this table brings, sharing joyful times with family and friends!



8

