

MANUAL DRUM LIFTER/ROTATOR - DRUM-LRT

ANY ADDITIONS, DELETIONS, OR OMISSIONS MUST BE CORRECTED ON THIS DRAWING AS THIS DRAWING WILL BE CONSIDERED ALL INCLUSIVE

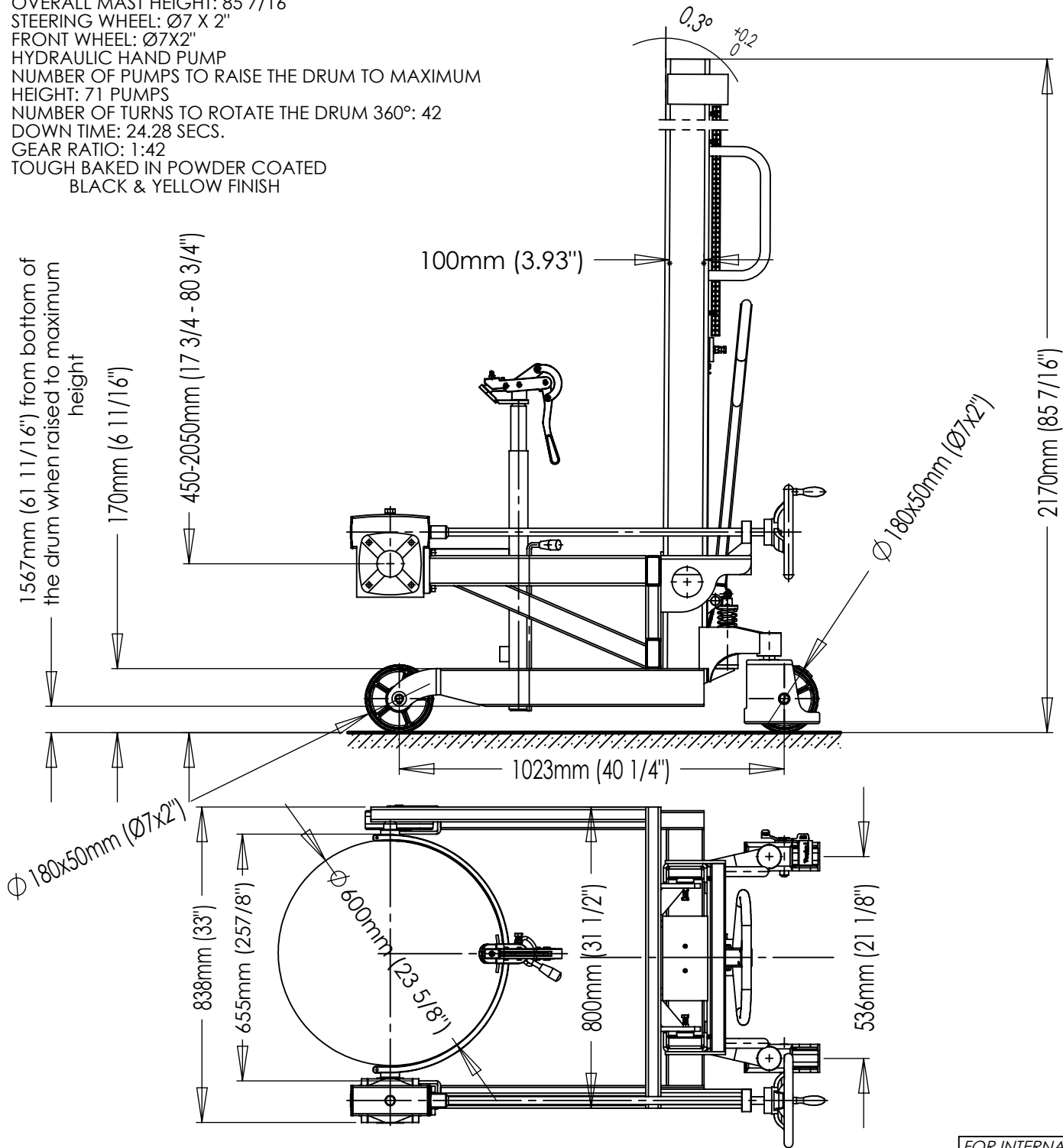
STANDARD FEATURES

MODEL # DRUM-LRT
CAPACITY: 550 LBS.
LIFT HEIGHT: 62"
MAST: SINGLE
SAFETY SHIELD: YES
OVERALL MAST HEIGHT: 85 7/16"
STEERING WHEEL: Ø7 X 2"
FRONT WHEEL: Ø7X2"
HYDRAULIC HAND PUMP
NUMBER OF PUMPS TO RAISE THE DRUM TO MAXIMUM
HEIGHT: 71 PUMPS
NUMBER OF TURNS TO ROTATE THE DRUM 360°: 42
DOWN TIME: 24.28 SECS.
GEAR RATIO: 1:42
TOUGH BAKED IN POWDER COATED
BLACK & YELLOW FINISH

SPECIAL FEATURES

NONE

ALL GRAPHICS PROVIDED ARE FOR REFERENCE ONLY. IF CERTAIN DIMENSIONS ARE CRITICAL PLEASE VERIFY THOSE DIMENSIONS WITH YOUR SALESPERSON



FOR INTERNAL USE ONLY
PROJECT SIGN OFF

SALES	
ENG.	
FAB.	
POWER	

APPROVAL	I, THE UNDERSIGNED, AGREE THAT THE PRODUCT AS REPRESENTED SATISFIES DESIGN AND DIMENSION REQUIREMENTS. I ALSO ACKNOWLEDGE MY DUTY TO CONFIRM PRODUCT AND INSTALLATION COMPLIANCE WITH ALL APPLICABLE FEDERAL, STATE AND LOCAL REGULATIONS AND STANDARDS.	
	ANY MODIFIED UNITS ARE NON-RETURNABLE	
	[] As drawn [] As marked	
	Signed: _____ Date: _____	
	Printed Name: _____	
LEAD TIME WILL START UPON RECEIPT OF SIGNED APPROVAL DRAWING		

DISTRIBUTOR'S NAME:		P.O.#	X
VESTIL MANUFACTURING		W.O.#	X
DRAWN BY: SJG	DATE: 7/31/2018	SALES:	X
REFERENCE: X	SCALE: NTS	FILE NAME:	DRUM-LRT
QUOTED LEAD TIME: X	QUOTE # X		