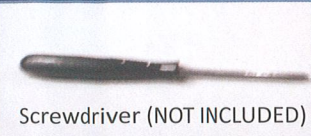
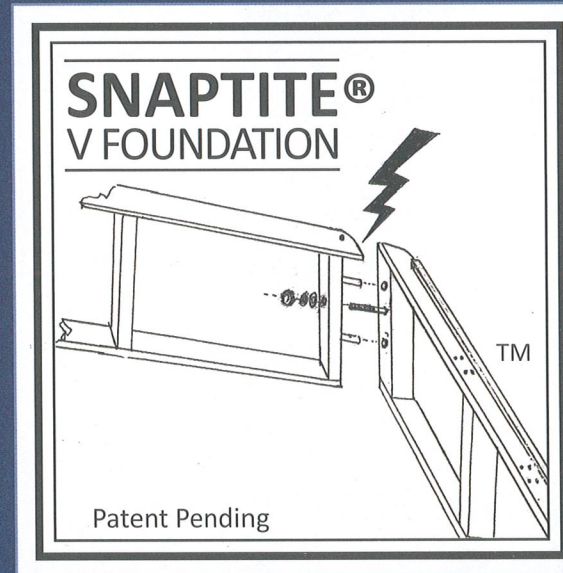
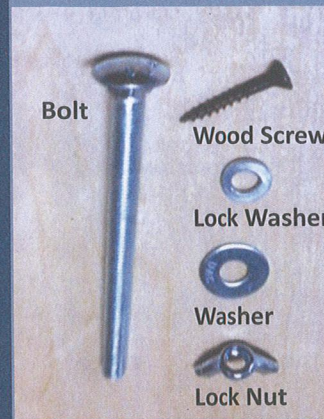


ASSEMBLY GUIDE



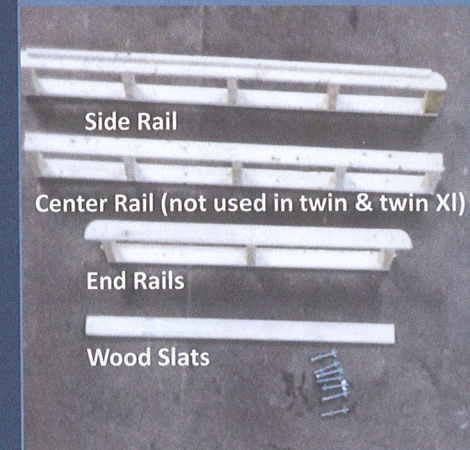
Hardware



Bed Foundation

King Takes 2 Slip Covers
All Others Take 1 Slip Cover

Wood Parts



	Hardware				
	Carriage Bolts	Wing Nuts	Washers	Lock Washers	Screws
TWIN	4	4	4	4	4
FULL	6	6	6	6	4
QUEEN	6	6	6	6	4
KING	8	8	8	8	8

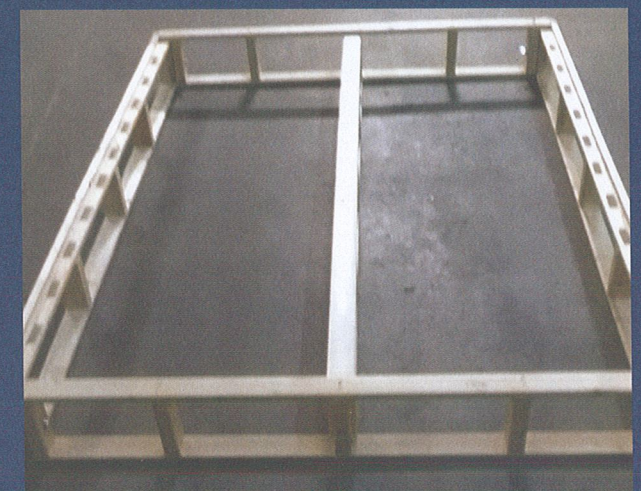
	Wood Parts			
	Sides	Ends	Slats	Centers
TWIN	2	2	10	0
FULL	2	2	10	1
QUEEN	2	2	10	1
KING	4	4	20	0

SNAPTITE® V, The EASY to assemble bedding foundation, manufactured by Jones Frame Inc., Proudly serving the industry for over 38 years.

1. Wood & Hardware Parts in Carton



2. Layout Sides Ends & Center



3. Snap & Slide Corners Together



4. Align Wood Pins as Pictured



9. Remove Cover from Plastic Bag



10. Position Cover Corners Over Frame



5. Slide Bolts in and Attach Wing Nuts



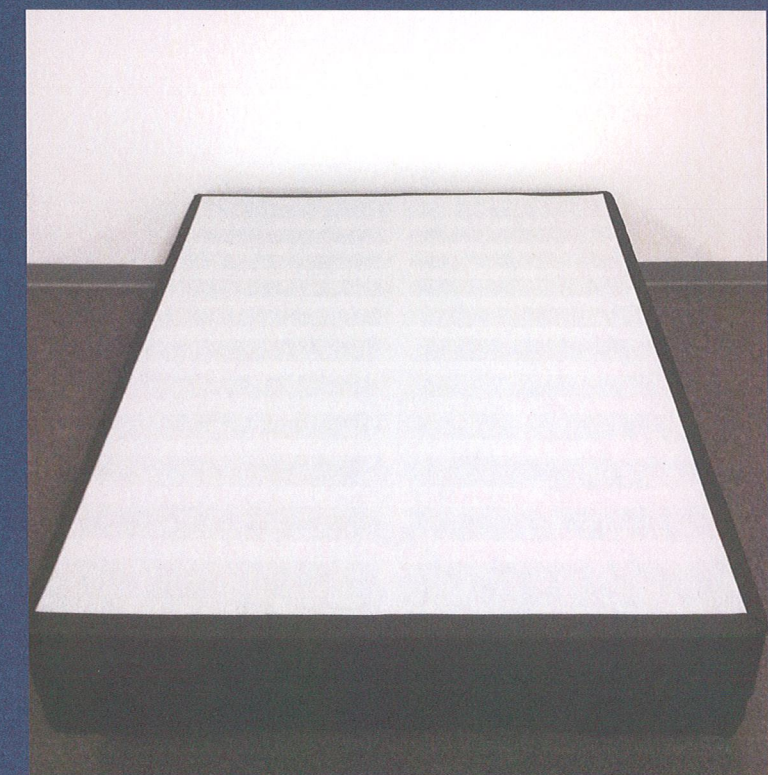
6. Place All Slats Onto Velcro



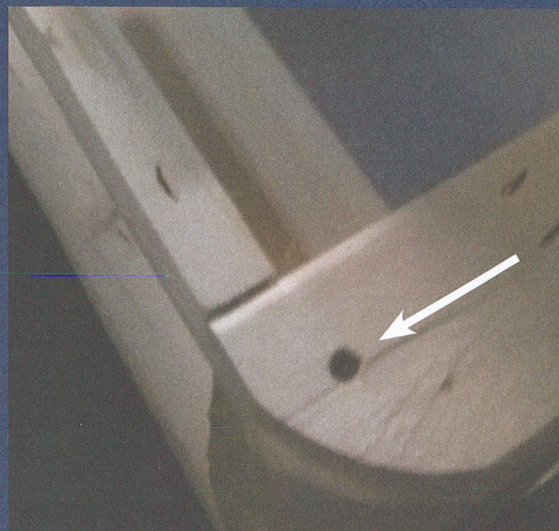
11. Pull Cover Down Firmly at Corners and Smooth Out Sides



12. Install Mattress On Foundation



7. Insert Corner Screws & Tighten



8. Foundation is Ready for Slip Cover

