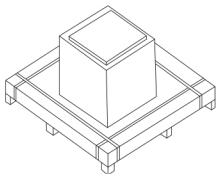
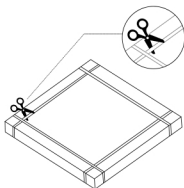


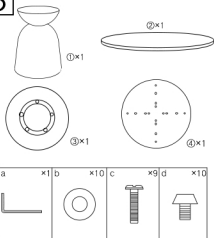
1 Check all packages: Tabletop, Connecting plate, Base. Please check the sample pictures for reference only.



2 Cut off the PP belt with sissor and open the packaging box directly.

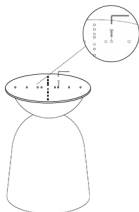


3



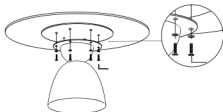
4

At first, Place the connecting plate on the base.



5

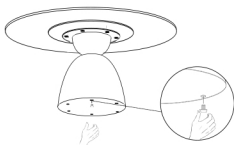
After the holes in the three parts of the tabletop, connecting plate and base are aligned, we can start to tighten the screws against the holes.



Tips: It is recommended not to tighten each screw too much at the beginning. When you get to the last screw, tighten the screws that are not tightened in front.

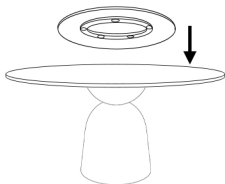
6

Installation is optional and can be decided based on actual circumstances.



7

Finally, put the small table top (Lazy Susan) on the tabletop, or remove it when you don't want to use it.



8

Assembly completed. Hope you can enjoy the warm dining moments that this table brings, sharing joyful times with family and friends!

