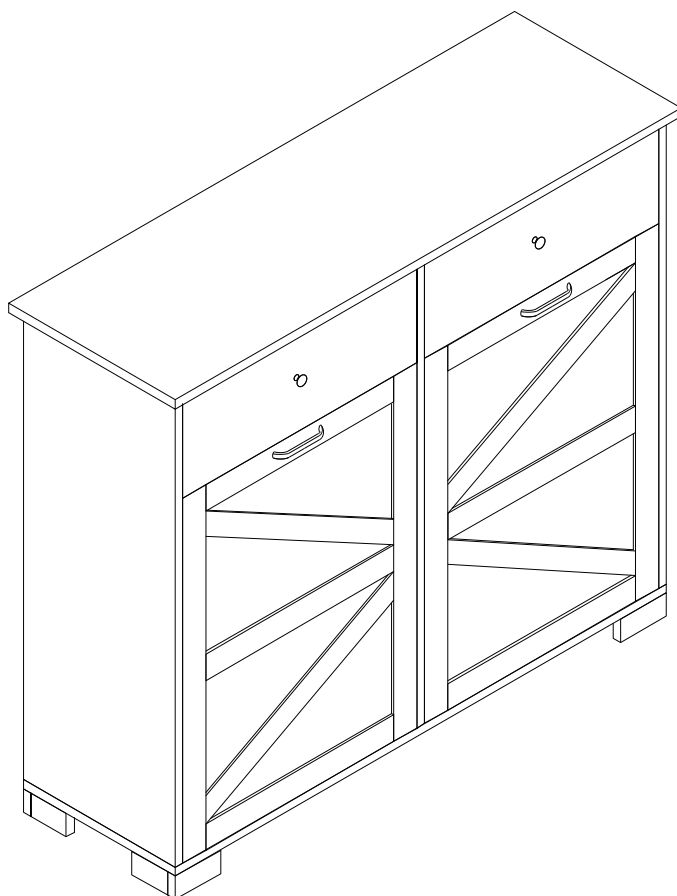


## Double Tilt Out Trash Can Cabinet



**After-sales mailbox:**  
**[Homefurnitureserviceteam@outlook.com](mailto:Homefurnitureserviceteam@outlook.com)**

# NOTICE

---

**Please keep these instructions for future reference.**

**Dear Customer**

● Thank you for your purchase. When you receive the product, please make sure that all the parts are intact. If any parts are missing, please contact us promptly to request replacement parts.

● Then follow the entire installation instructions to install.

● Each part is crucial, so please be careful not to lose any. It is recommended to store parts with different lettered identifiers in separate boxes or bags to avoid confusion during installation.

**A** . The outer box is damaged

**B** . The product is damaged / bent / cracked while you open the box

**C** . The parts / accessories / assembly tools are missing

**D** . The instructions are not clear and can not be referred

**E** . The product has functional problems

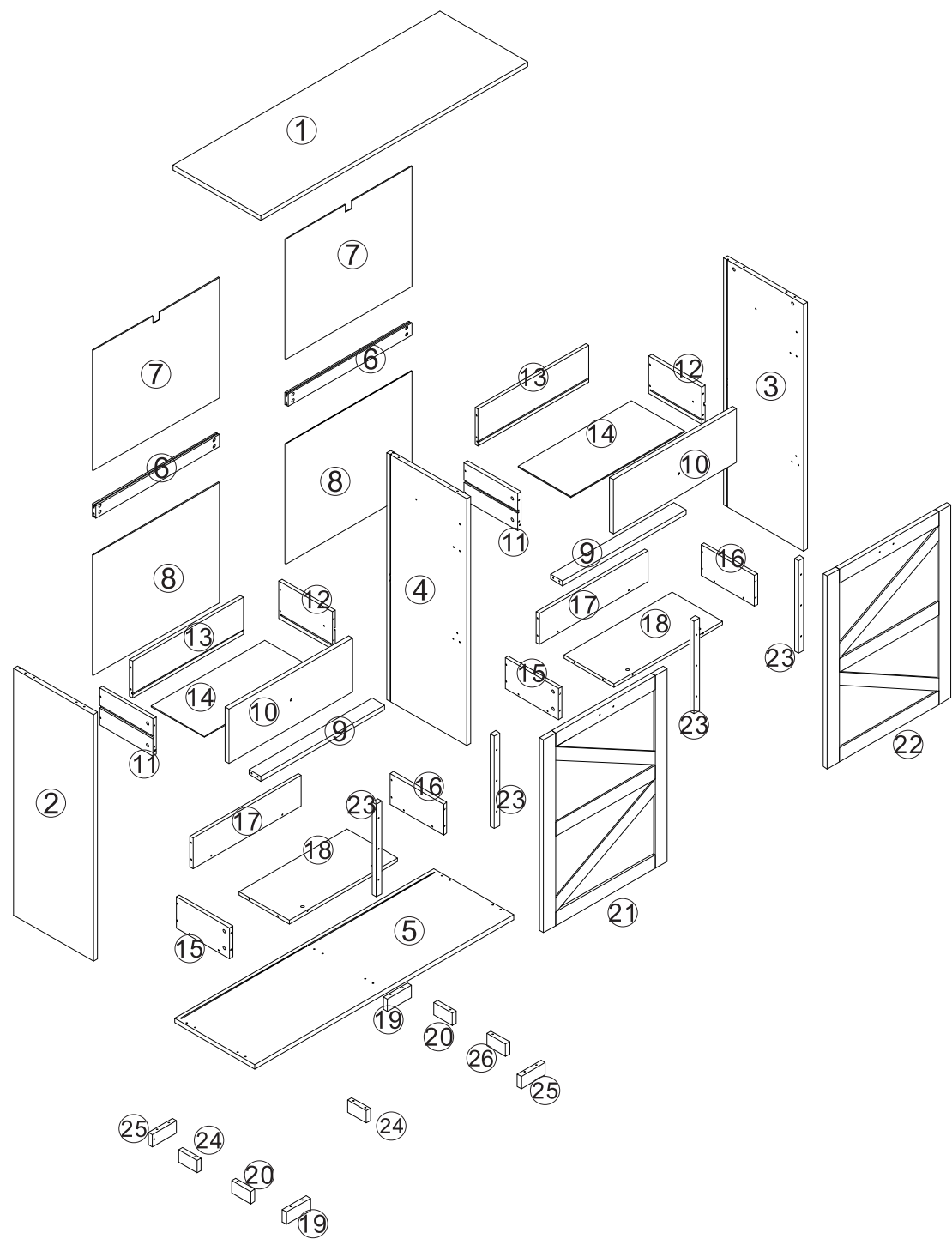
**F** . Other aspects that you are not satisfied with











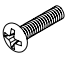






Please feel free to contact us for help. Our after-sales team service

([Homefurniture Serviceteam@outlook.com](mailto:Homefurniture Serviceteam@outlook.com)) will reply within 24 hours and will do our best to resolve the problem for you.



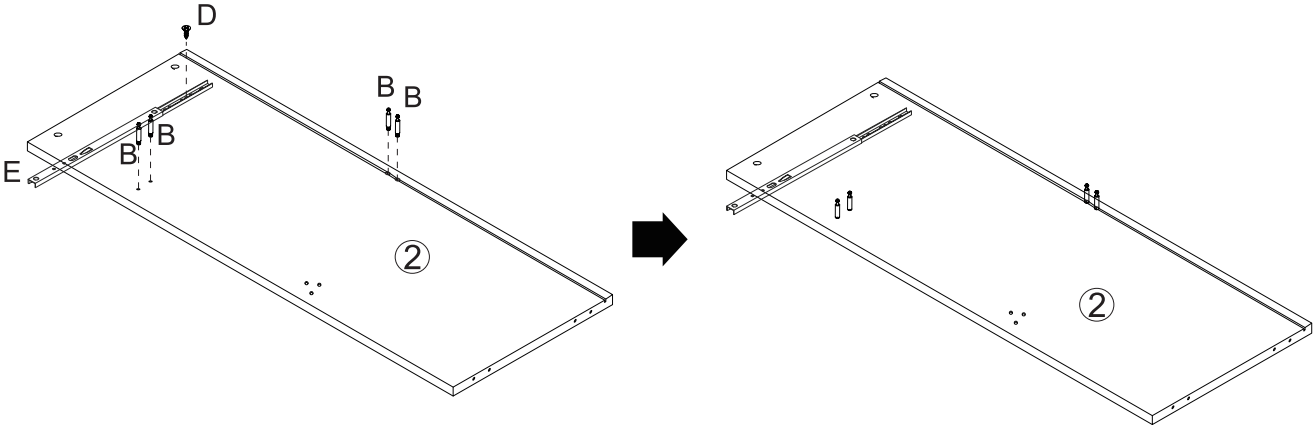
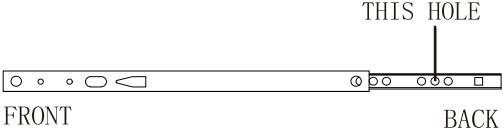
# PART LIST



					
<b>Ax46</b>	<b>Bx46</b>	<b>Cx16</b>	<b>Dx44</b>	<b>Ex4</b>	<b>Fx4</b>
					
<b>Gx16</b>	<b>Hx12</b>	<b>Ix4</b>	<b>Jx28</b>	<b>Kx6</b>	<b>Lx2</b>
					
<b>Mx16</b>	<b>Nx2</b>	<b>Ox4</b>	<b>Px2</b>	<b>Qx9</b>	

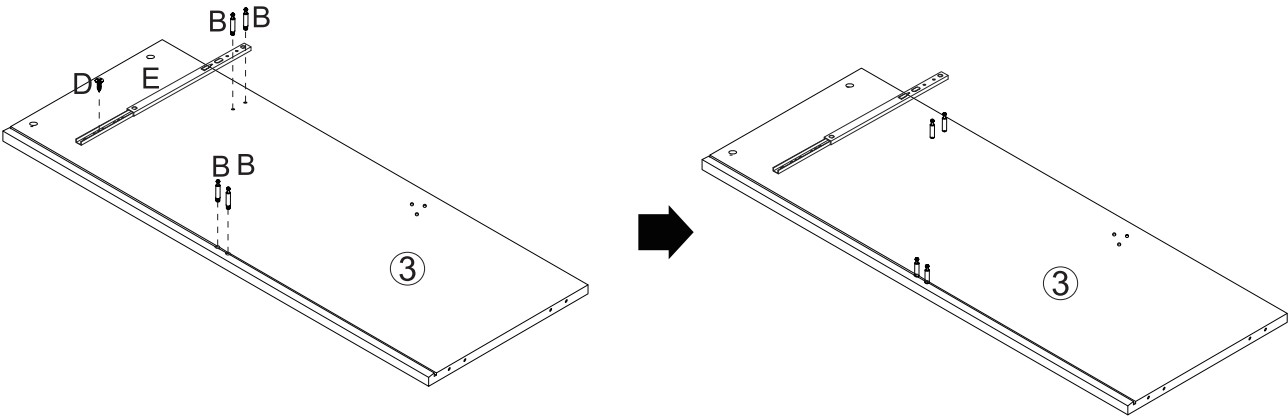
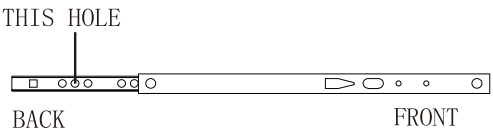
# STEP

01



	Bx4
	Dx2
	Ex1

02

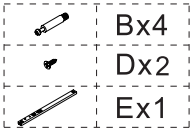
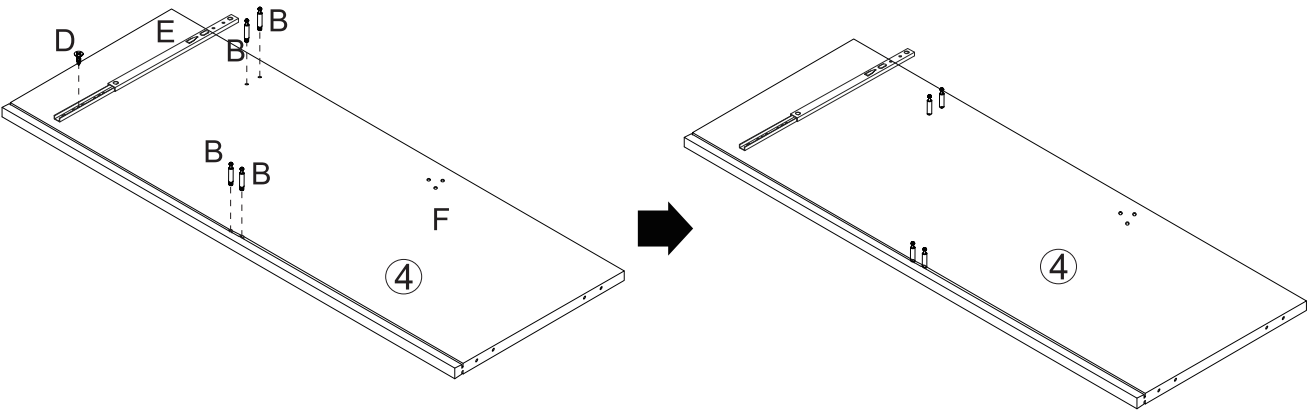
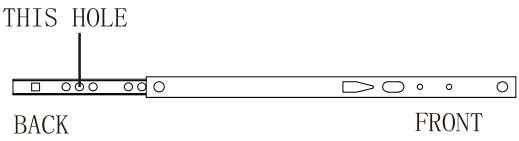


	Bx4
	Dx2
	Ex1

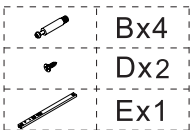
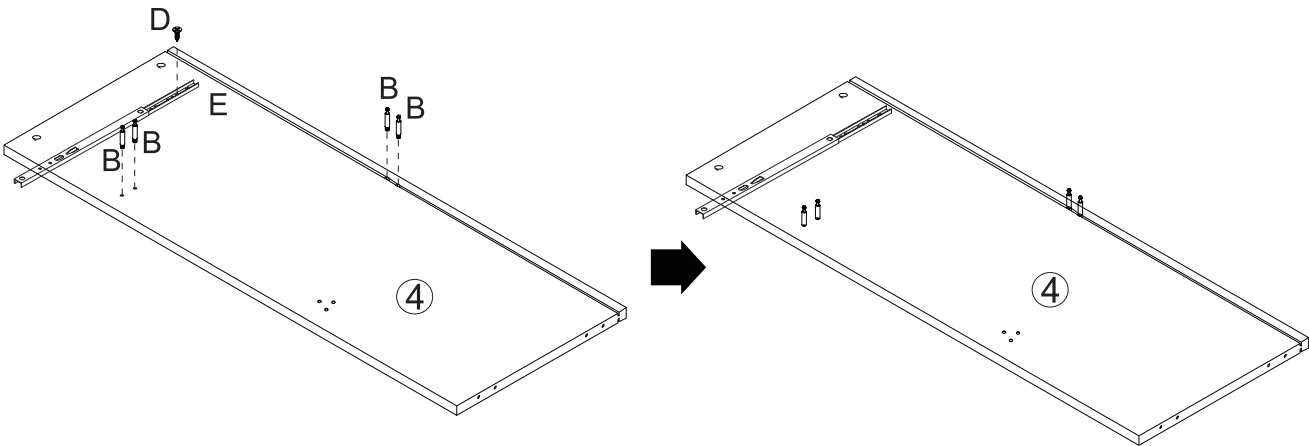
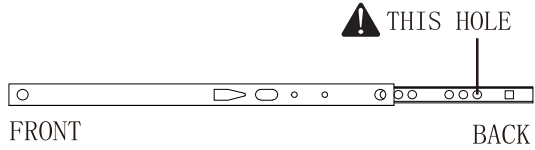
03

# STEP

03

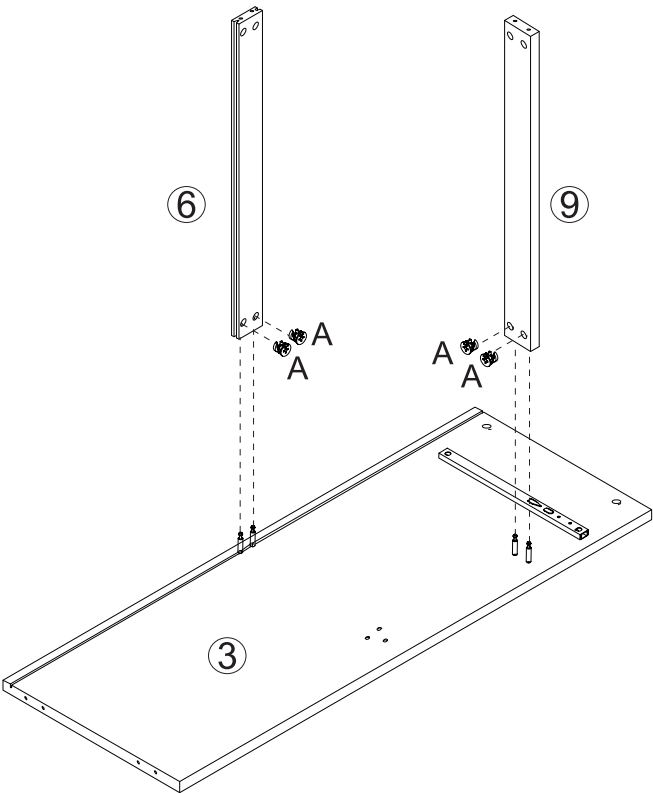


04



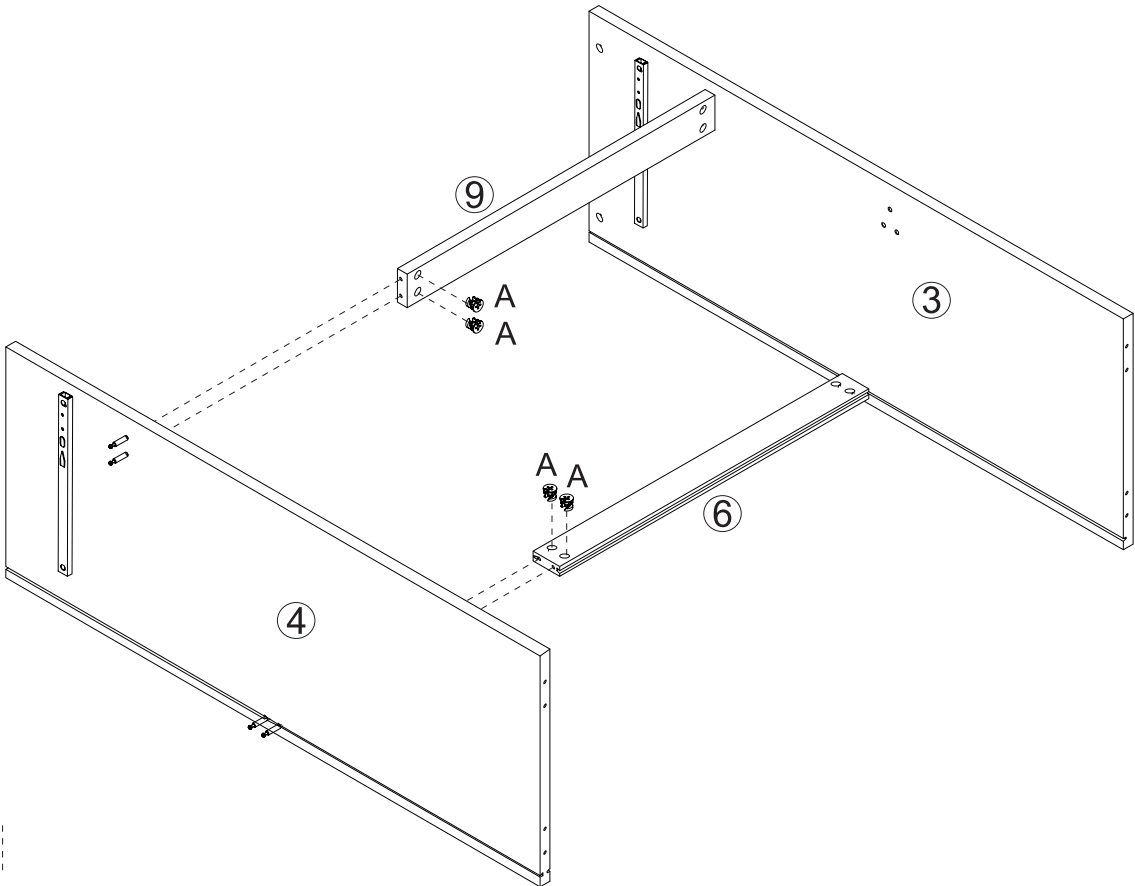
STEP

05



 Ax4

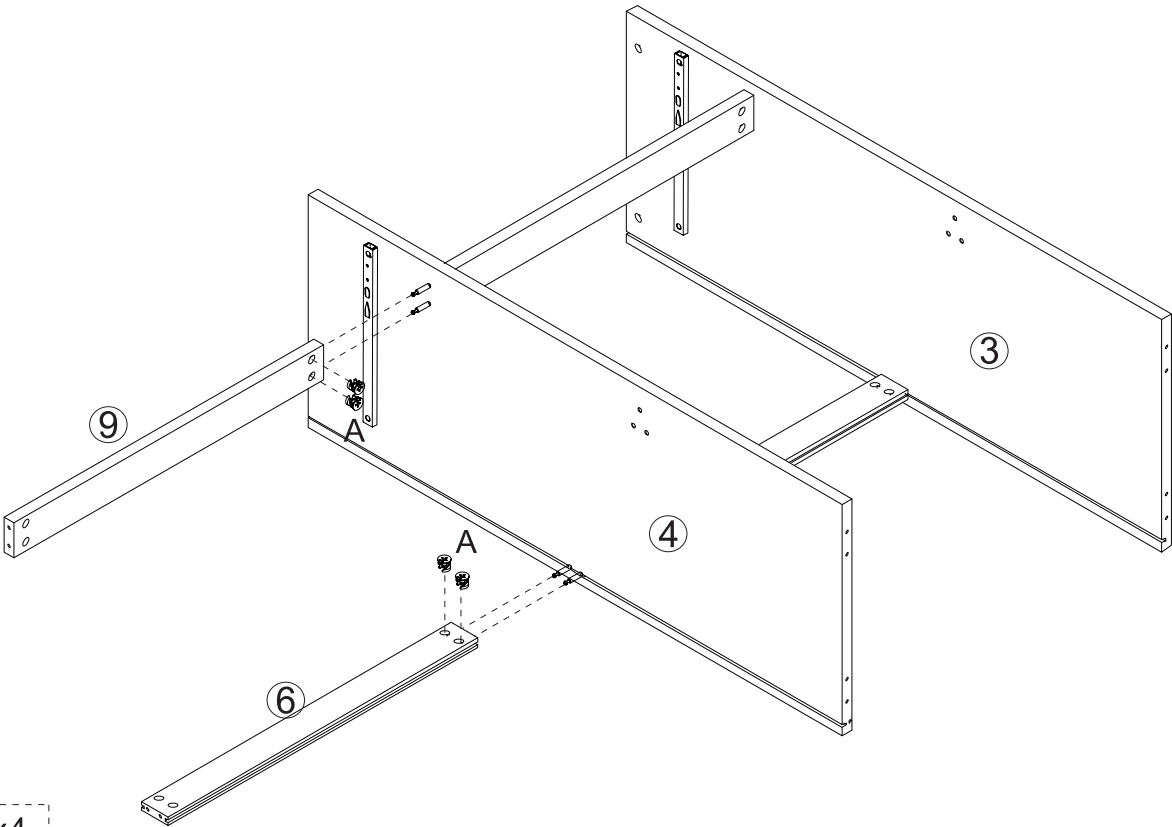
06



 Ax4

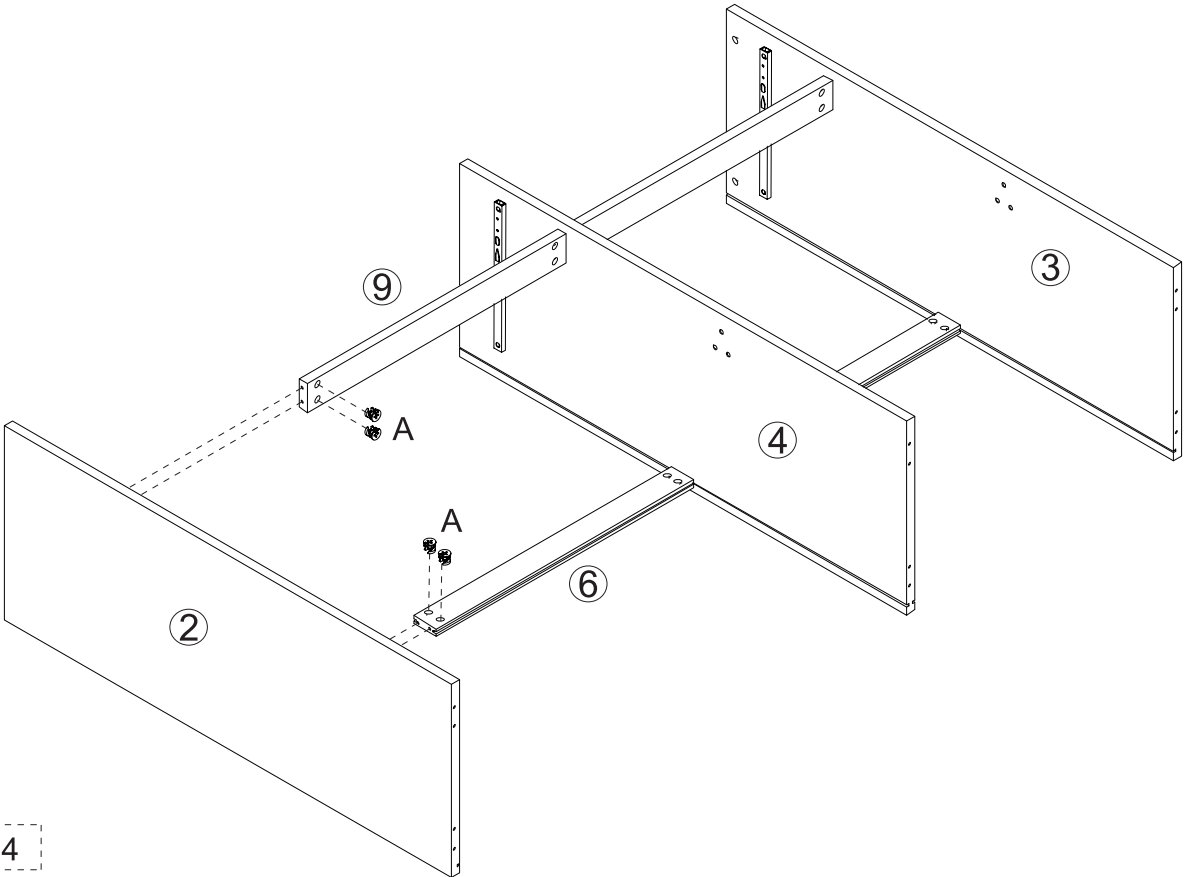
STEP

07



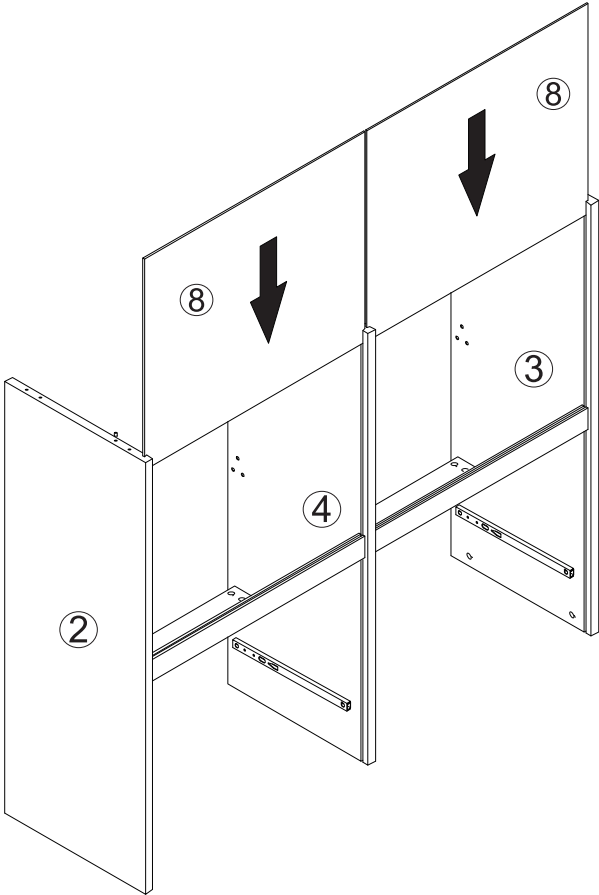
 Ax4

08

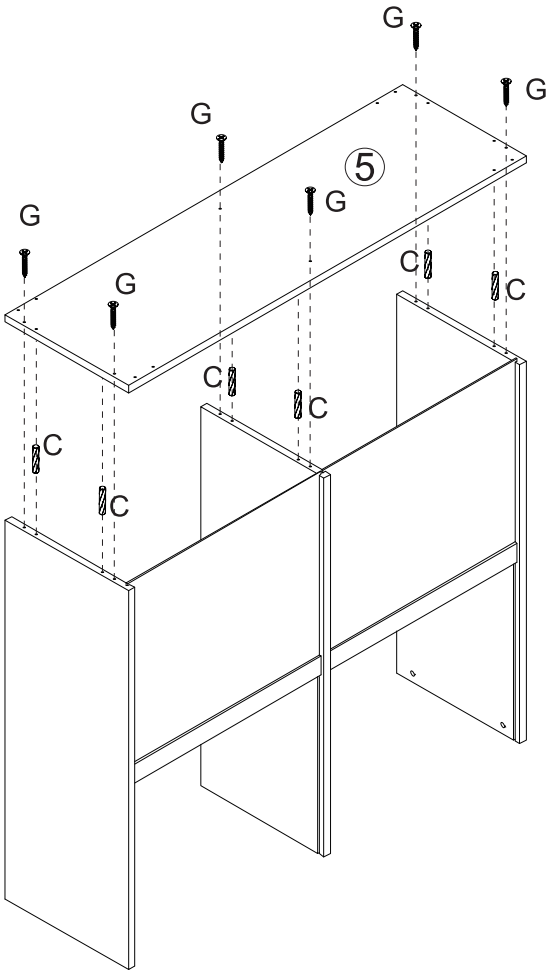


 Ax4

09



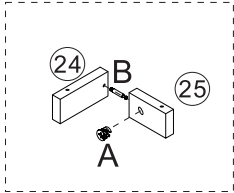
10



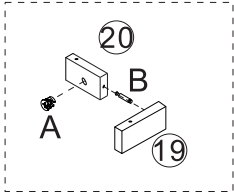


STEP

11

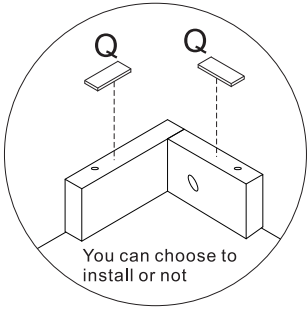
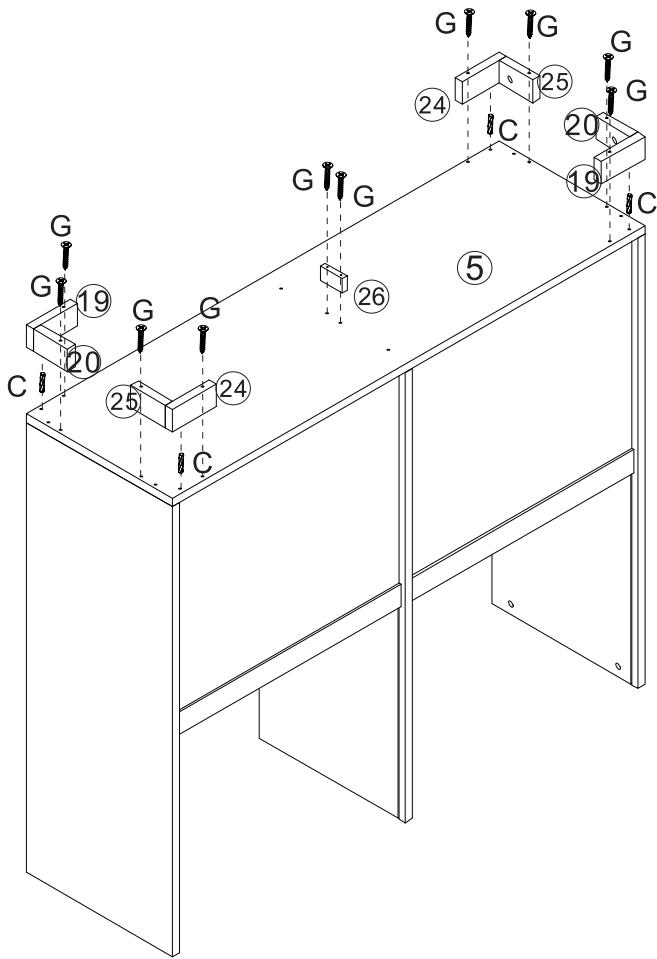


x2

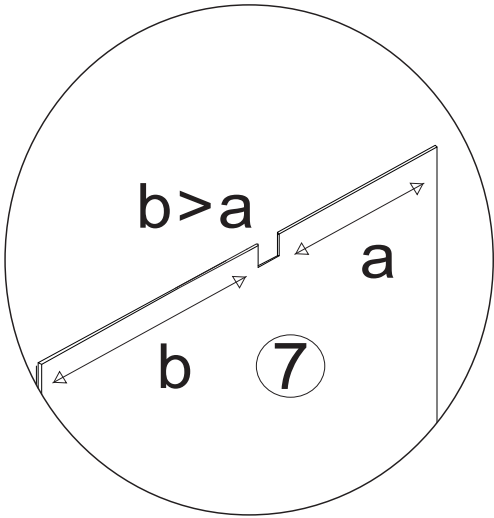
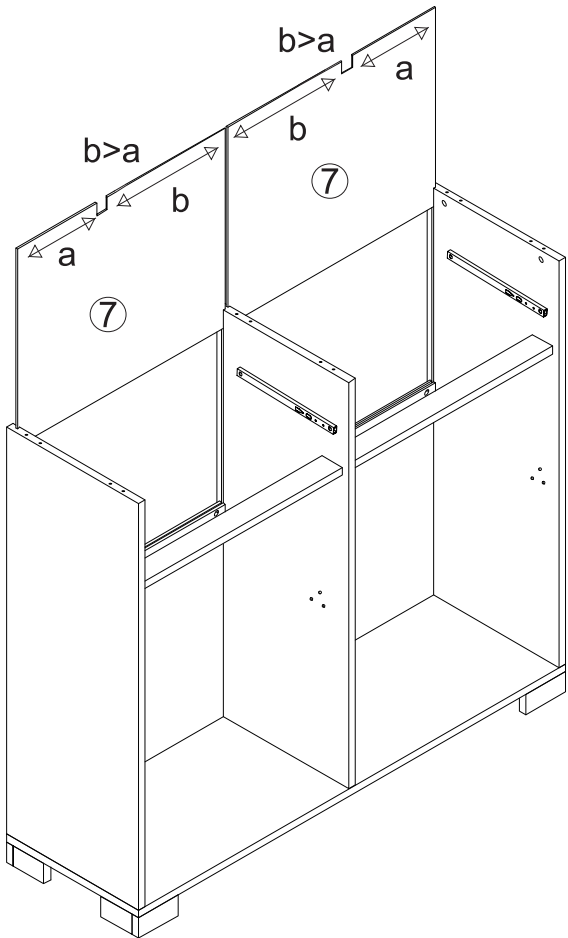


x2

	Ax4
	Bx4
	Cx4
	Gx10
	Qx9

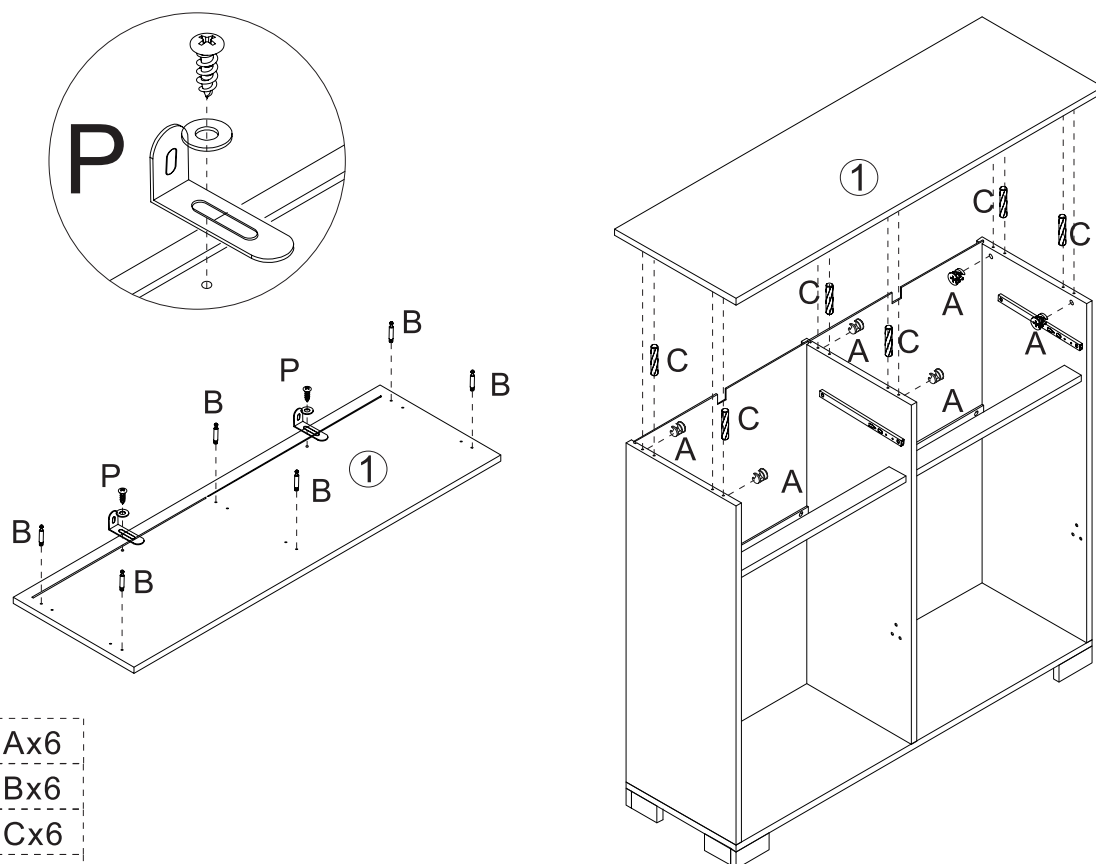


12



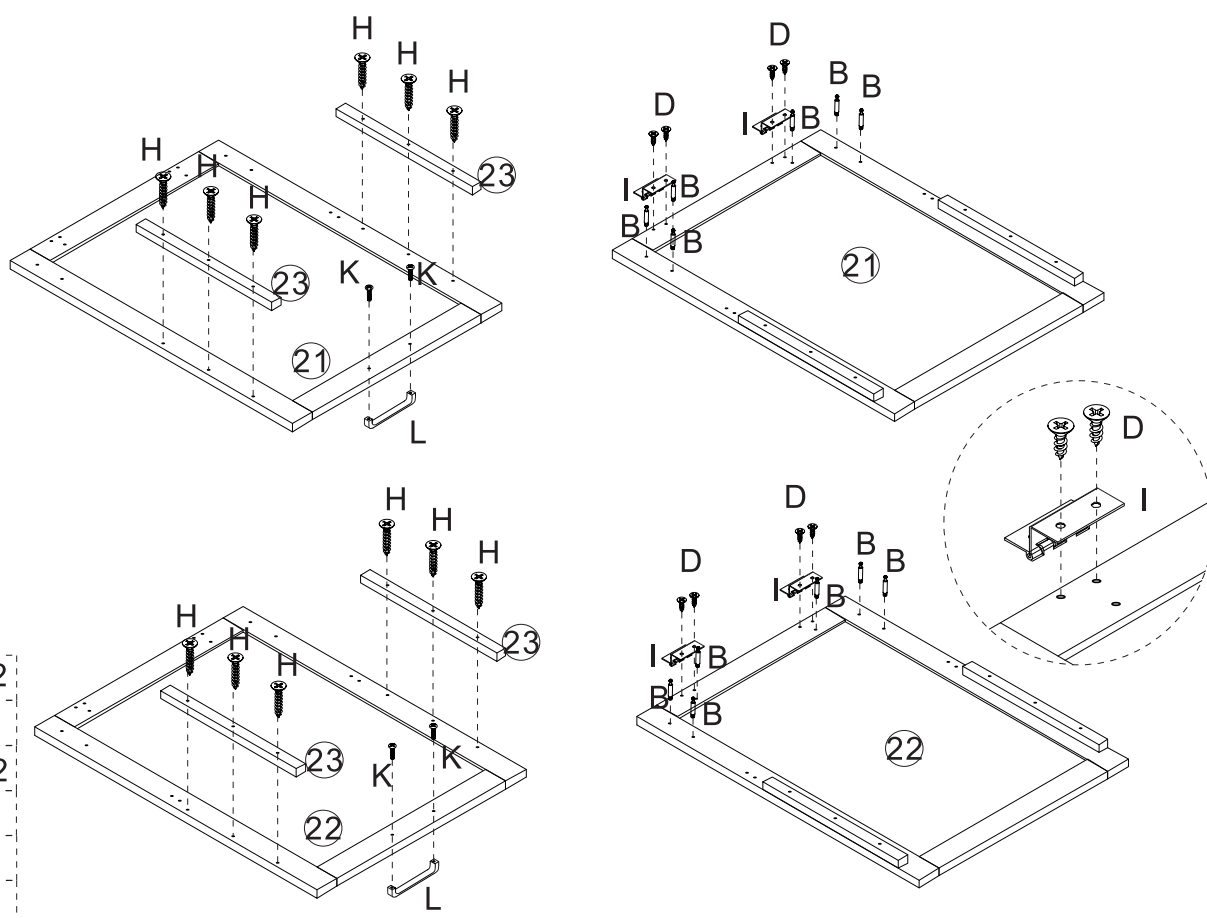
# STEP

13



	Ax6
	Bx6
	Cx6
	Px2

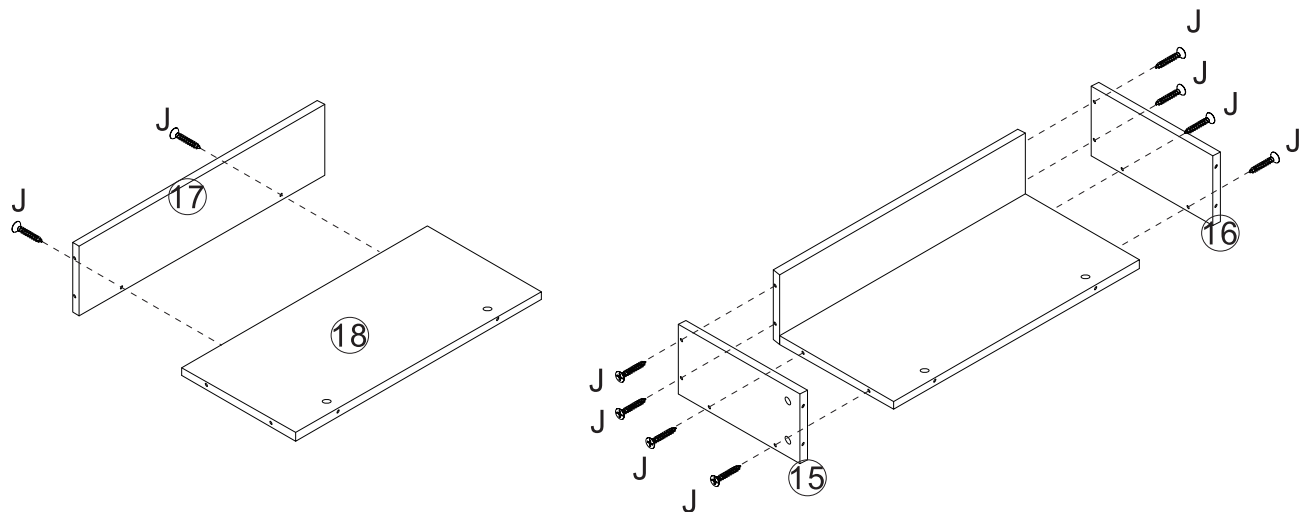
14



	Bx12
	Dx8
	Hx12
	Ix4
	Kx4
	Lx2

STEP

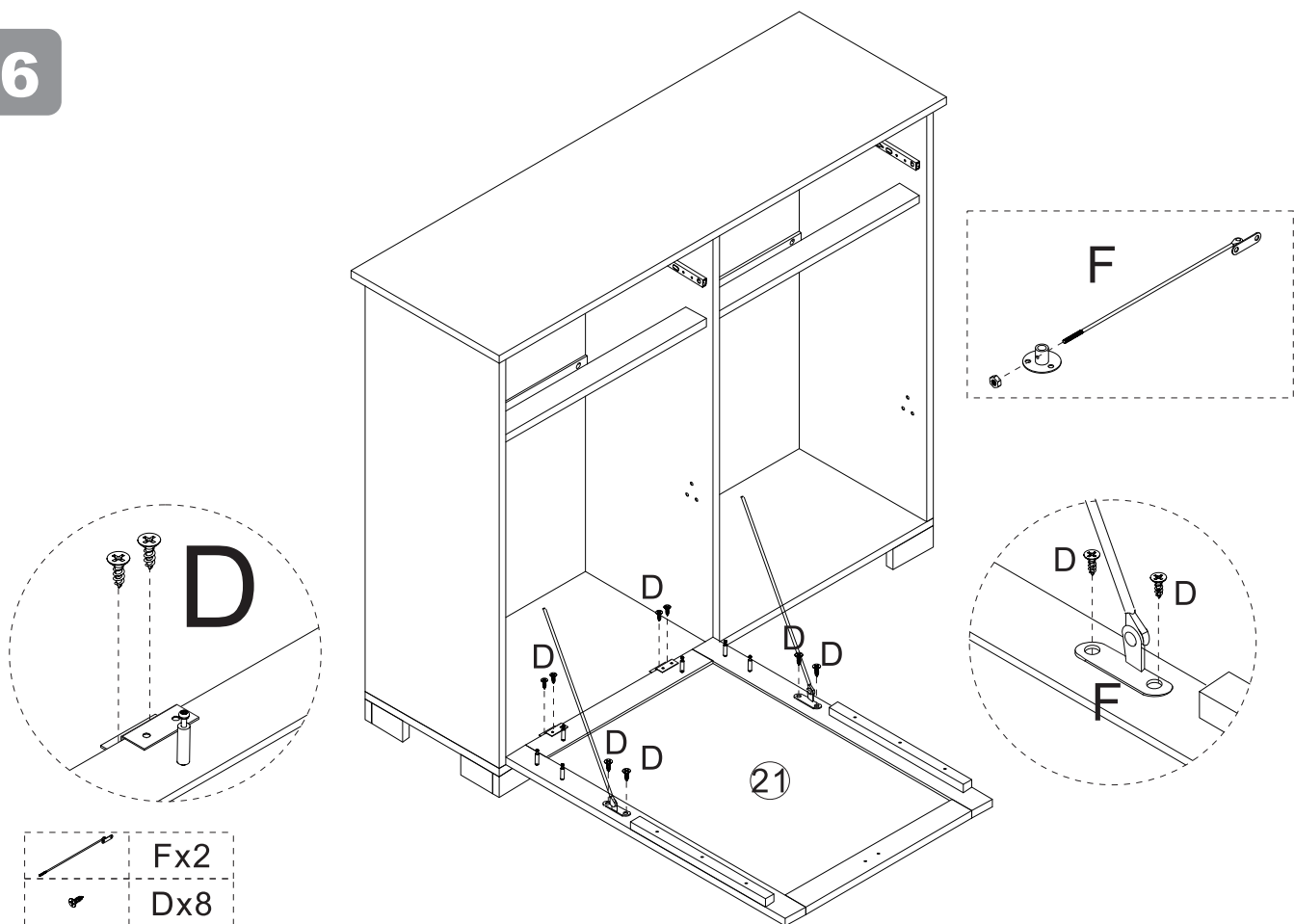
15



x2

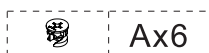
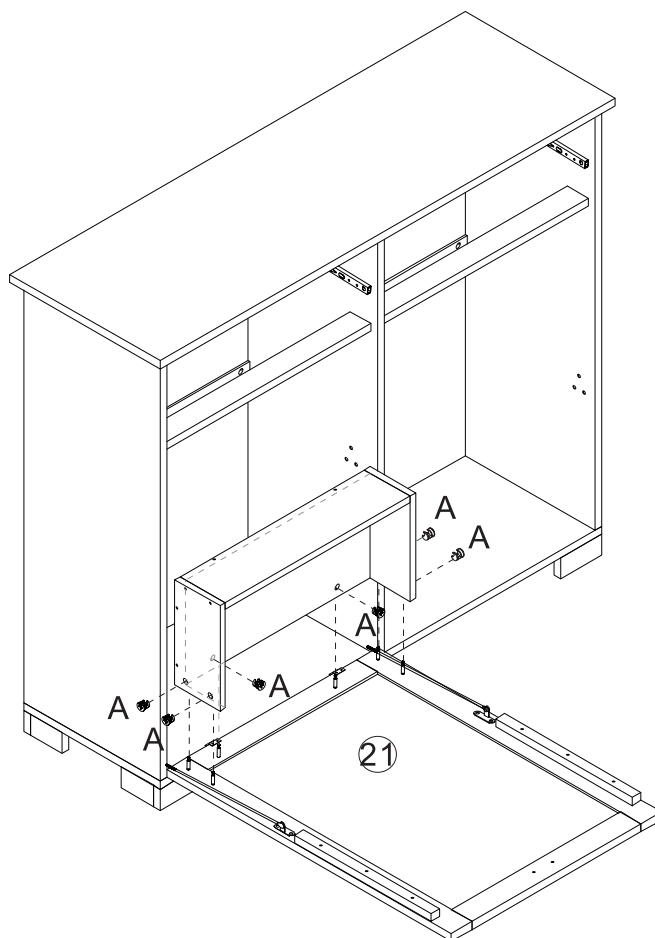
Jx20

16

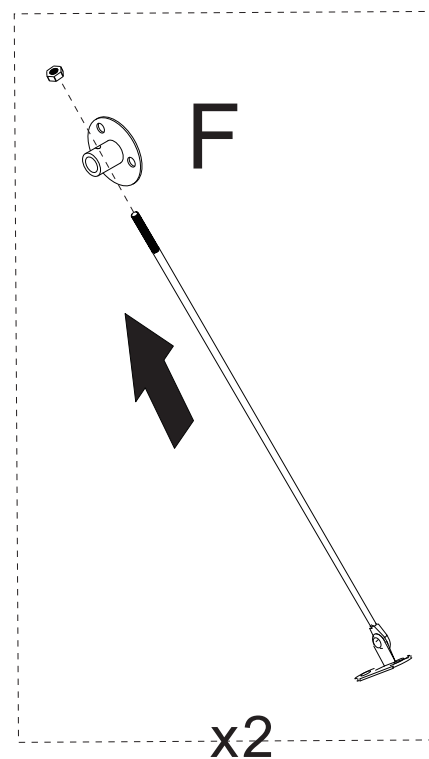
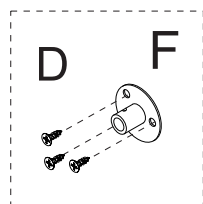
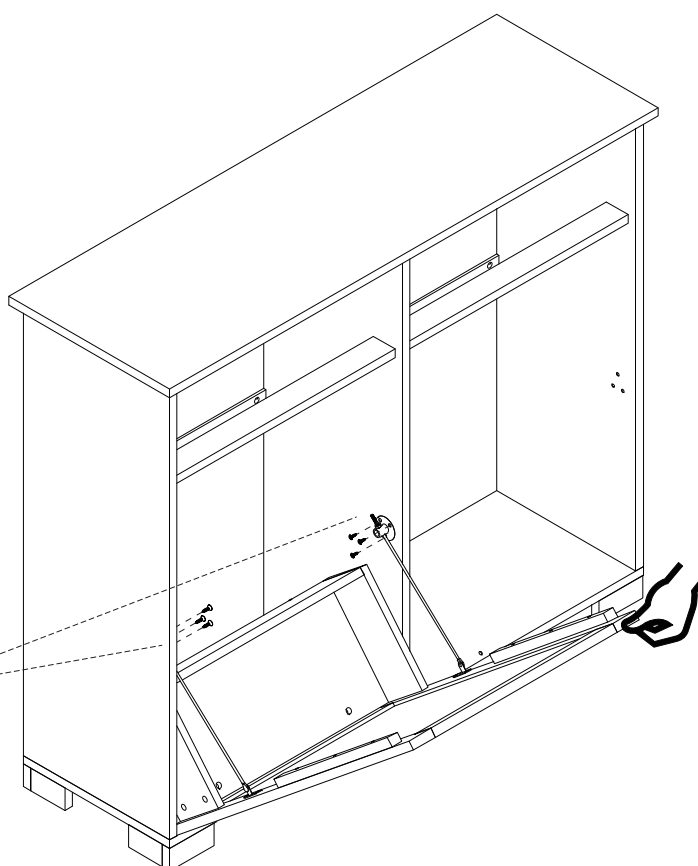


# STEP

17



18

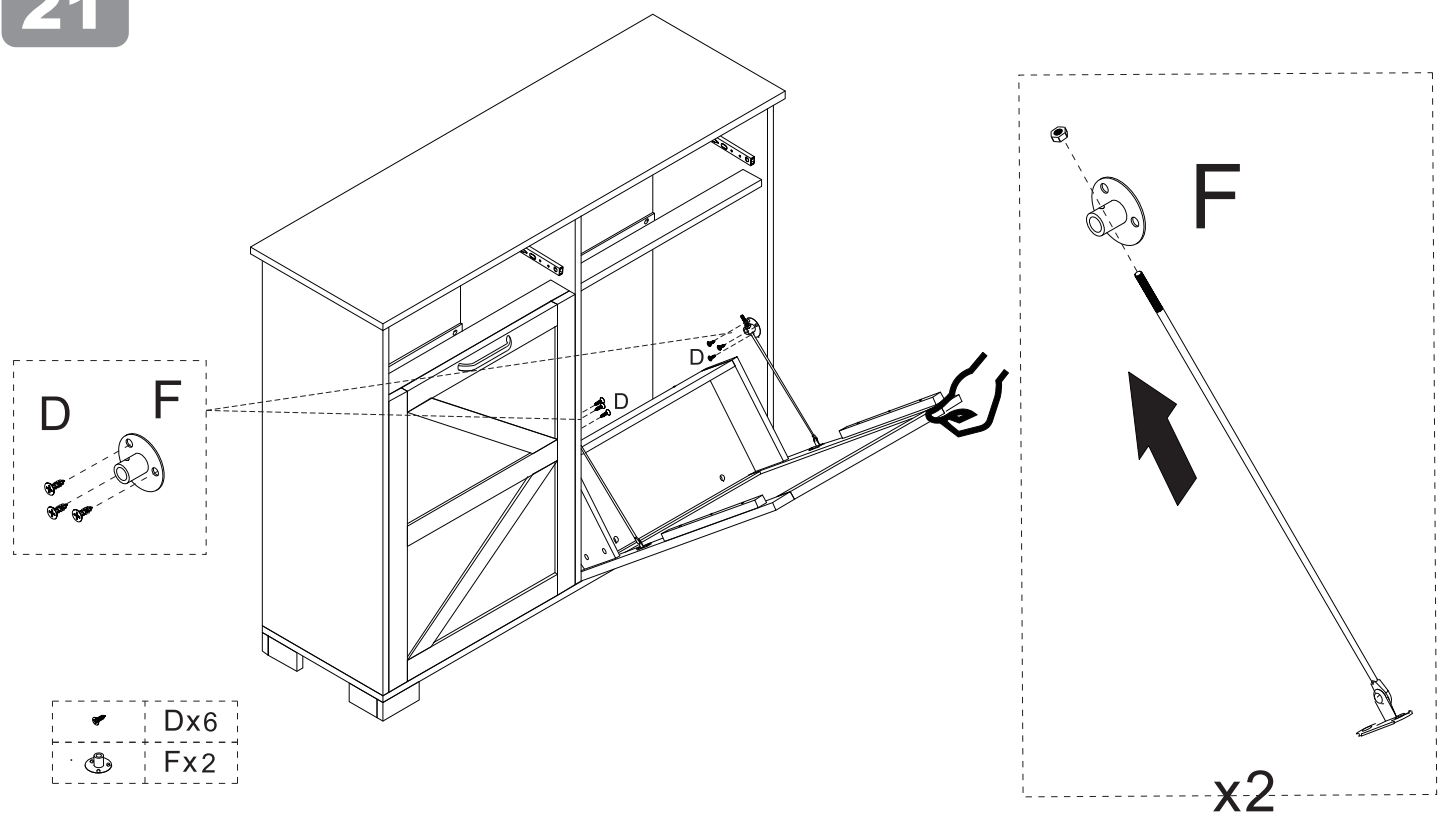


## 19

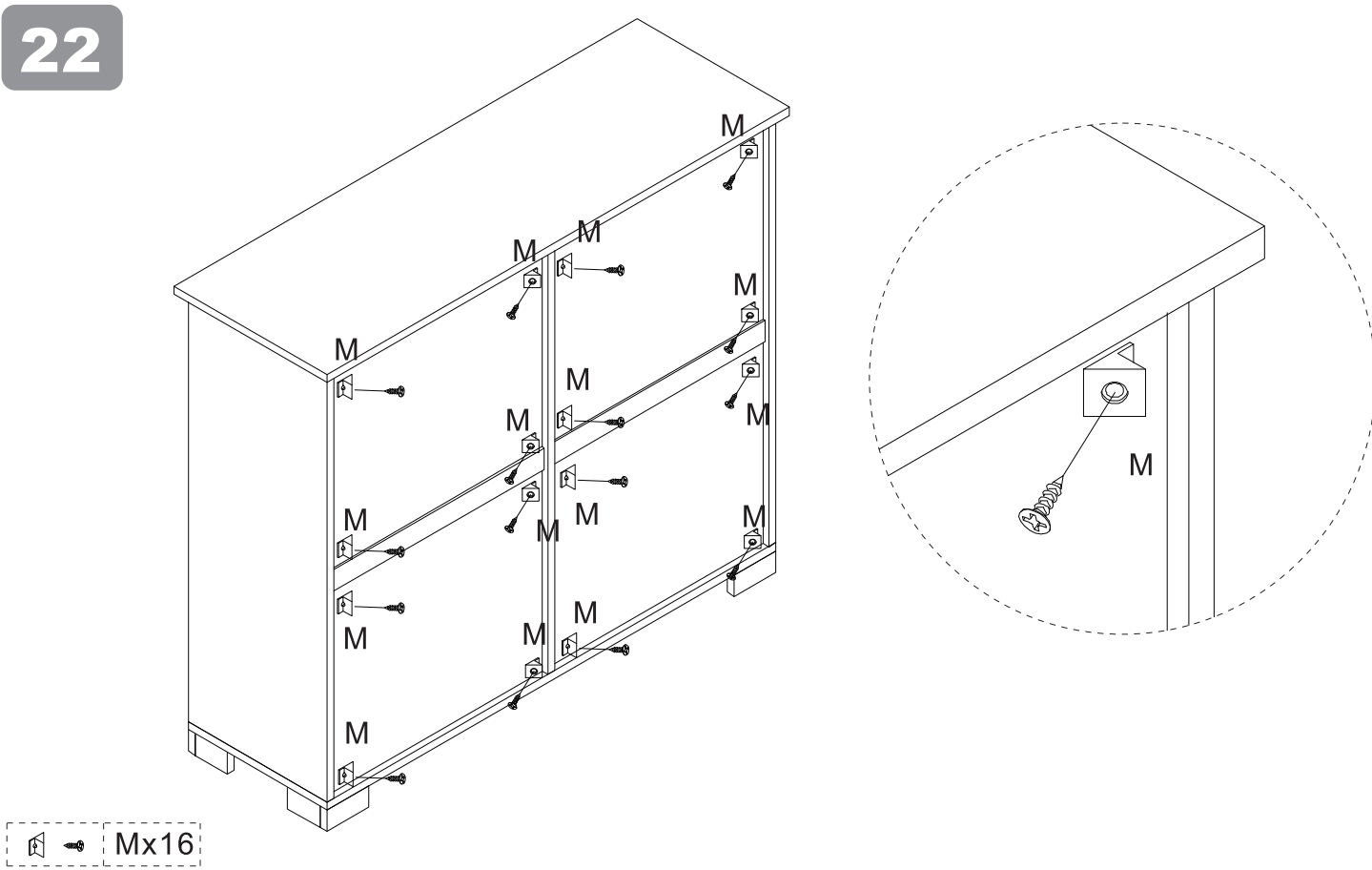


STEP

21



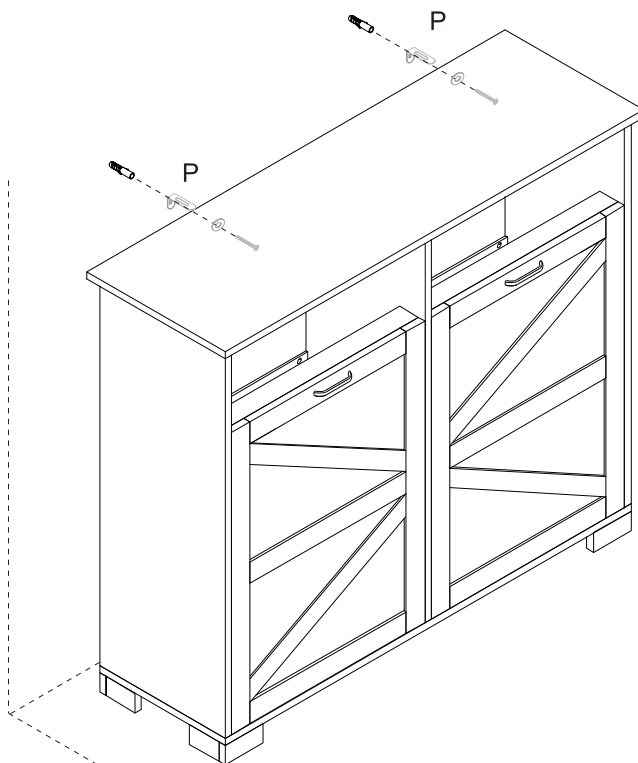
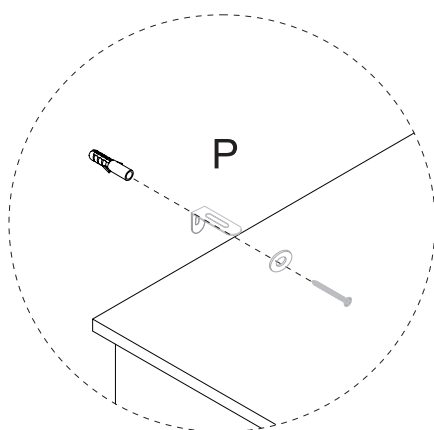
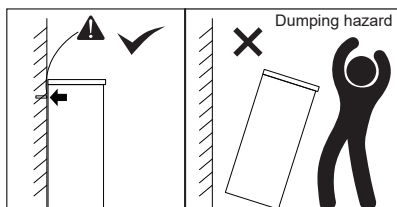
22



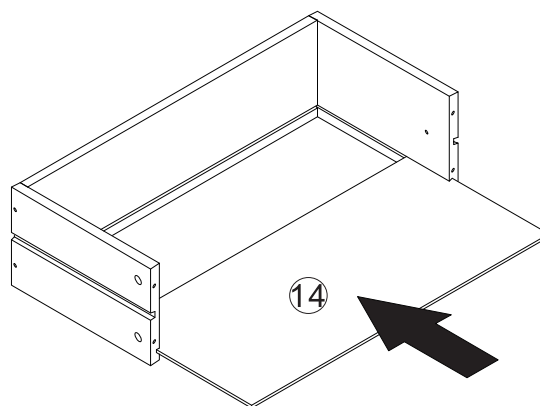
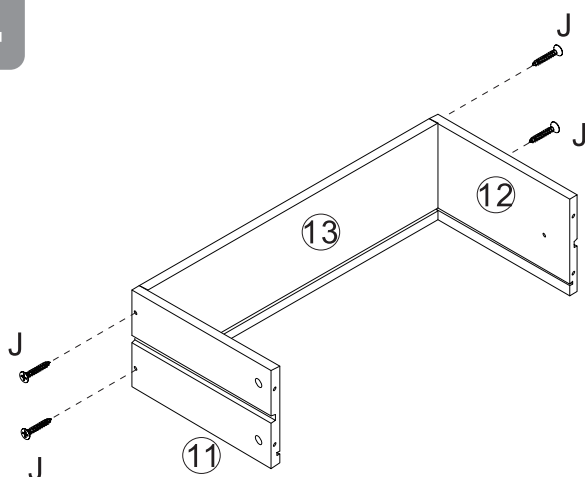
# STEP

23

⚠ The part P must be nailed on the wall with cabinet.



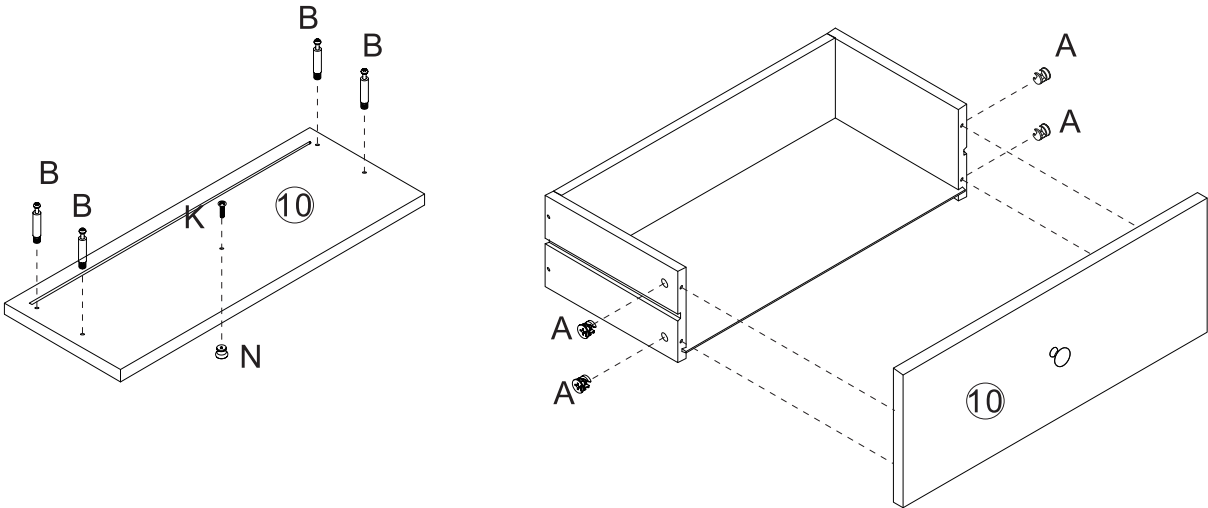
24



x2



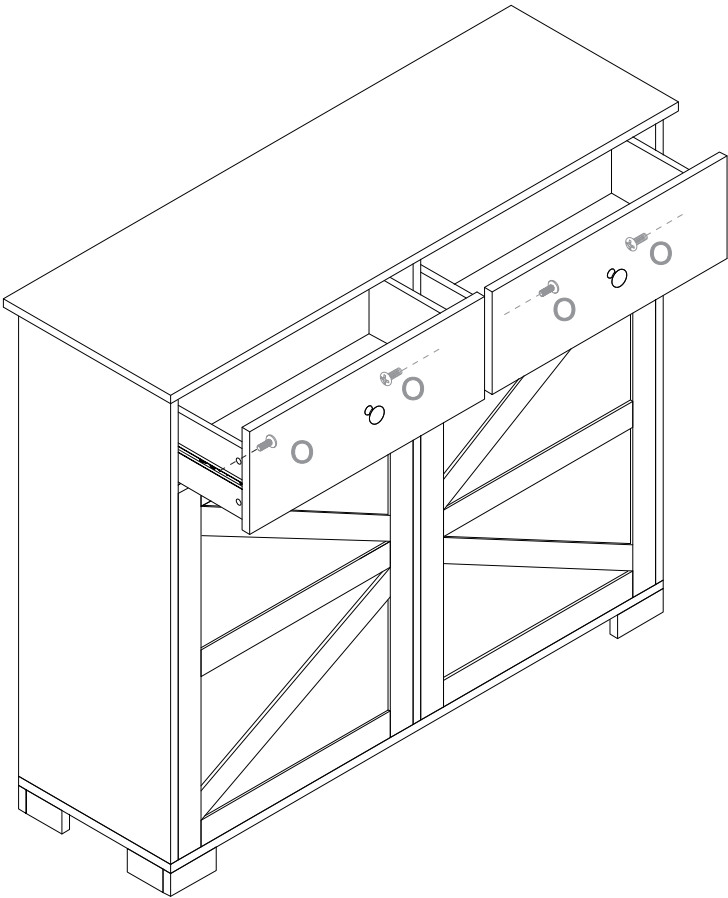
25



	Ax8
	Bx8
	Kx2
	Nx2

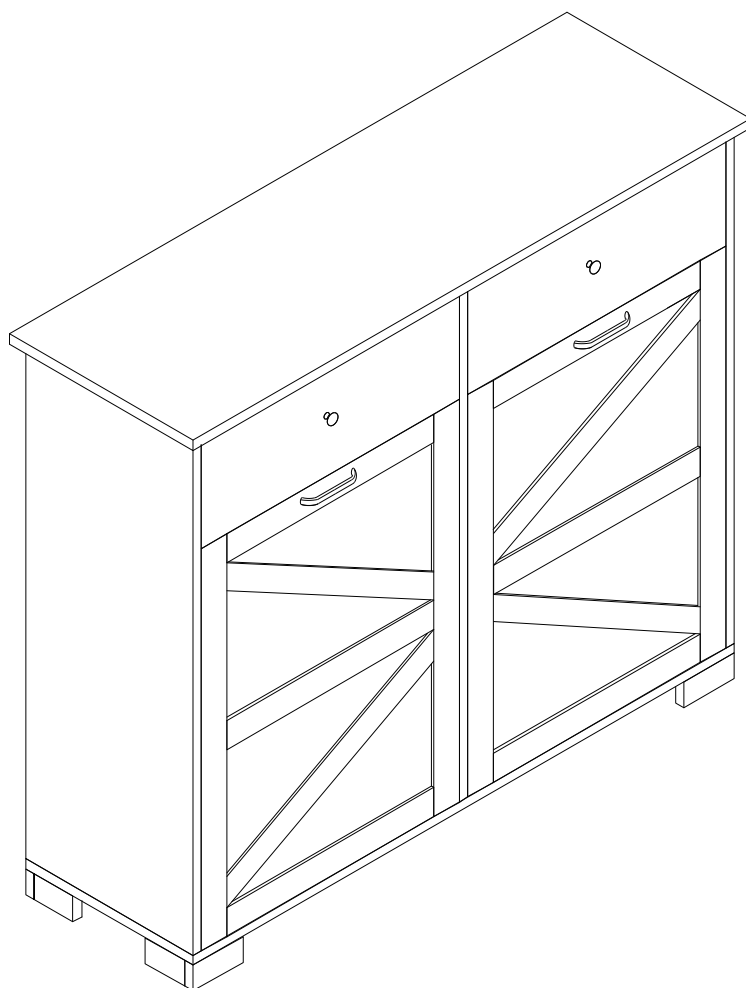
x2

26



	Ox4
--	-----





The cabinet has been successfully assembled.  
It's ready to be put into use.

# AFTER-SALE SERVICE

If you have any suggestions for our products or notice any quality issues, please contact us first. Our after-sales team will respond within 24 hours and will do everything possible to provide you with a satisfactory solution.

## Guaranteed Customer Service

Your shopping experience is very important to us!  
Feel unsatisfied? **Contact us!**  
Have any questions? **Contact us!**

Wanna share how wonderful our smart products make your home?

Share your pictures with us.

Any suggestions? **Contact us!**

We will check and give feedback!



**Homefurniture Serviceteam@outlook.com**

